

CITY OF STOUGHTON
REPORT TO THE CITY COUNCIL

June 24, 2011

Presented By:

Baker Tilly Virchow Krause, LLP
Ten Terrace Court
P.O. Box 7398
Madison, WI 53707-7398
800 362 7301

Heather S. Acker, CPA, Partner

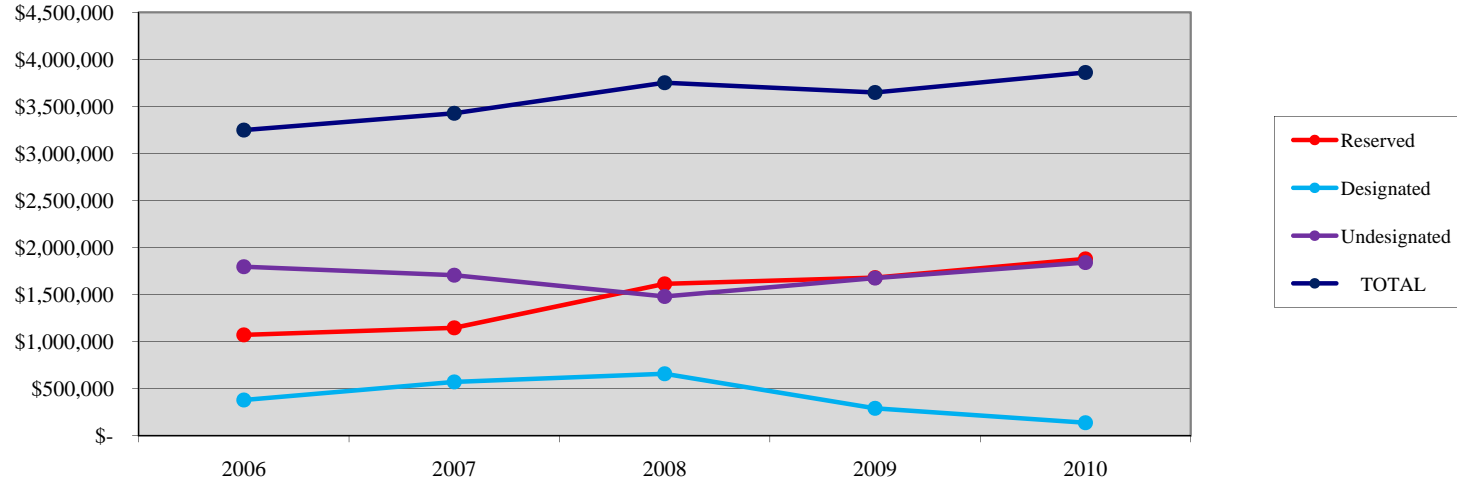
Note: Actual data was derived from current and prior years audited financial statements

CITY OF STOUGHTON 2010 FINANCIAL STATEMENT HIGHLIGHTS

ANALYSIS OF GENERAL FUND BALANCE

<u>Detail of Fund Balance</u>	<u>2006</u>	<u>2007</u>	<u>2008</u>	<u>2009</u>	<u>2010</u>
Reserved	\$ 1,072,560	\$ 1,147,452	\$ 1,614,144	\$ 1,681,698	\$ 1,880,482
Designated	379,871	572,338	658,520	291,397	139,527
Undesignated	<u>1,796,750</u>	<u>1,707,045</u>	<u>1,479,989</u>	<u>1,676,285</u>	<u>1,841,110</u>
TOTAL	<u>\$ 3,249,181</u>	<u>\$ 3,426,835</u>	<u>\$ 3,752,653</u>	<u>\$ 3,649,380</u>	<u>\$ 3,861,119</u>

General Fund Balance Trends

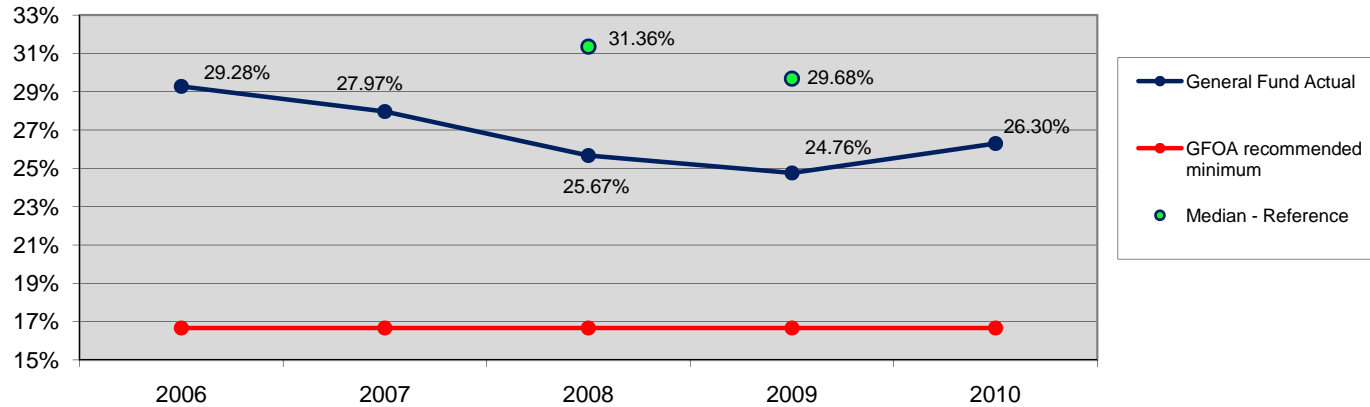


CITY OF STOUGHTON 2010 FINANCIAL STATEMENT HIGHLIGHTS

ANALYSIS OF GENERAL FUND BALANCE (cont.)

	<u>2006</u>	<u>2007</u>	<u>2008</u>	<u>2009</u>	<u>2010</u>
Unreserved Fund Balance	\$ 2,176,621	\$ 2,279,383	\$ 2,138,509	\$ 1,967,682	\$ 1,980,637
Expenditures	7,433,722	8,150,323	8,331,596	7,946,450	7,531,141
% of expenditures	29.28%	27.97%	25.67%	24.76%	26.30%

Unreserved General Fund Balance as a Percentage of Expenditures



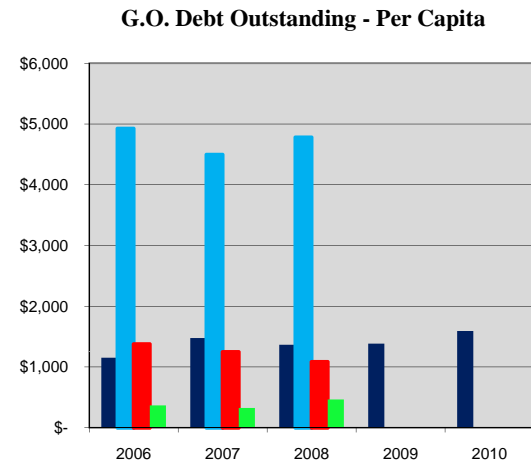
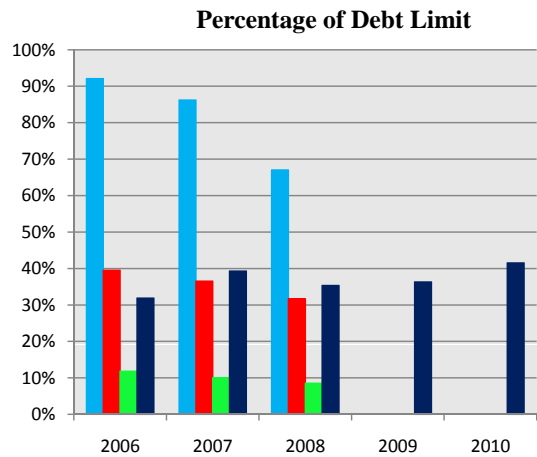
GFOA recommended range for % of expenditures: no less than 2 months of regular GF operating expenditures

Reference values for the population range: 10,000 to 15,000 generated from 2008 and 2009 Baker Tilly municipal client data for Wisconsin.

CITY OF STOUGHTON 2010 FINANCIAL STATEMENT HIGHLIGHTS

GENERAL OBLIGATION DEBT OUSTANDING

	<u>2006</u>	<u>2007</u>	<u>2008</u>	<u>2009</u>	<u>2010</u>
<u>Total General Obligation (G.O) Debt (net)</u>					
City	\$ 15,063,516	\$ 19,289,851	\$ 18,366,689	\$ 18,580,000	\$ 19,485,000
Utilities	-	-	-	-	1,015,000
Less: Funds available for debt	(300,731)	(303,771)	(834,711)	(762,772)	(103,206)
TOTAL	\$ 14,762,785	\$ 18,986,080	\$ 17,531,978	\$ 17,817,228	\$ 20,396,794
Population	12,800	12,865	12,840	12,865	12,820
G.O. Debt Capacity	\$ 46,346,550	\$ 48,341,550	\$ 49,598,840	\$ 49,108,090	\$ 49,130,975
G.O. debt per capita	\$ 1,153	\$ 1,476	\$ 1,365	\$ 1,385	\$ 1,591
% of debt limit	32%	39%	35%	36%	42%



2006-2008 Reference values for the population range: 10,000 to 15,000 taken from *MunicipalFacts10* publication by the Wisconsin Taxpayers Alliance, 2010.

CITY OF STOUGHTON 2010 FINANCIAL STATEMENT HIGHLIGHTS

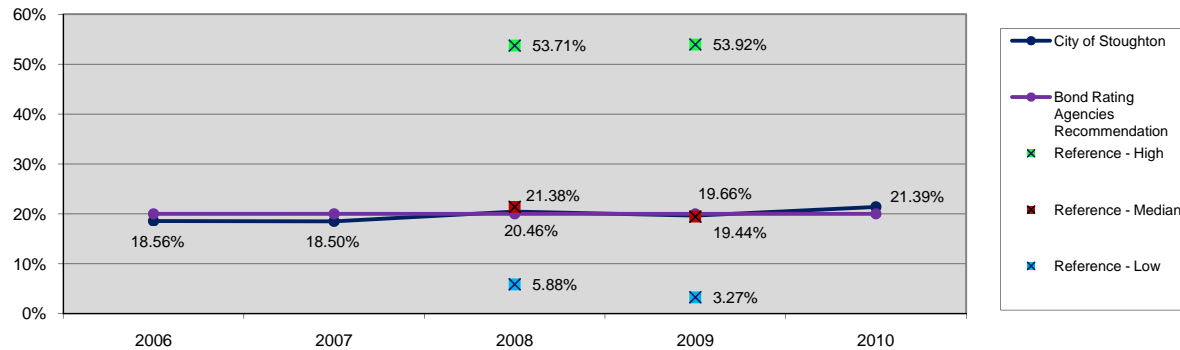
ANALYSIS OF DEBT SERVICE - GOVERNMENTAL FUNDS

	<u>2006</u>	<u>2007</u>	<u>2008</u>	<u>2009</u>	<u>2010</u>
<u>Total Debt Service</u>					
Principal*	\$ 1,351,754	\$ 1,439,879	\$ 1,493,162	\$ 1,523,177	\$ 1,830,000
Interest	629,663	662,014	1,012,148	835,966	685,013
TOTAL	\$ 1,981,417	\$ 2,101,893	\$ 2,505,310	\$ 2,359,143	\$ 2,515,013
<u>Total Non-Capital Expenditures</u>					
Total governmental funds expenditures*	\$ 13,594,397	\$ 16,740,147	\$ 15,033,778	\$ 14,633,842	\$ 14,551,647
Less: capital outlay	(2,917,952)	(5,375,946)	(2,788,664)	(2,633,478)	(2,793,339)
TOTAL NON-CAPITAL EXPENDITURES	\$ 10,676,445	\$ 11,364,201	\$ 12,245,114	\$ 12,000,364	\$ 11,758,308

* excludes refunded principal

% of debt service to non-capital expenditures	18.56%	18.50%	20.46%	19.66%	21.39%
---	--------	--------	--------	--------	--------

Debt Service to Non-Capital Expenditures



	2008	2009
Bond rating agencies recommended %	20.00%	20.00%
Reference - High:	53.71%	53.92%
Reference - Median:	21.38%	19.44%
Reference - Low:	5.88%	3.27%

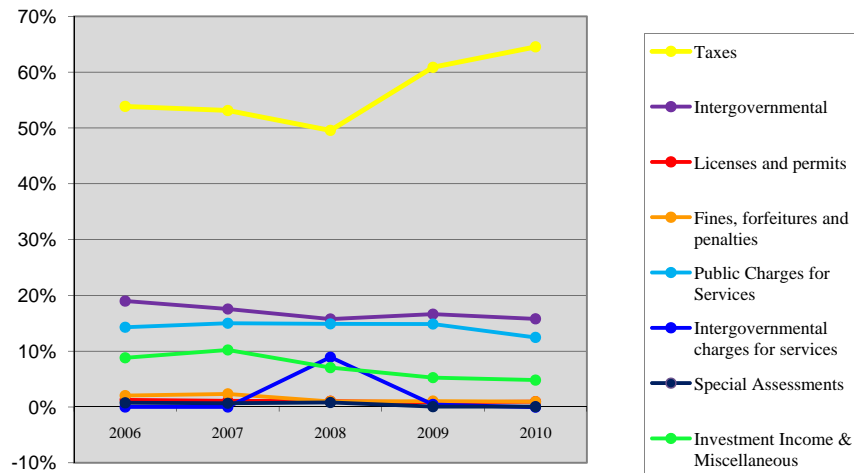
Reference values for the population range: 10,000 to 17,500 generated from 2008 and 2009 Baker Tilly municipal client data for Wisconsin.

CITY OF STOUGHTON 2010 FINANCIAL STATEMENT HIGHLIGHTS

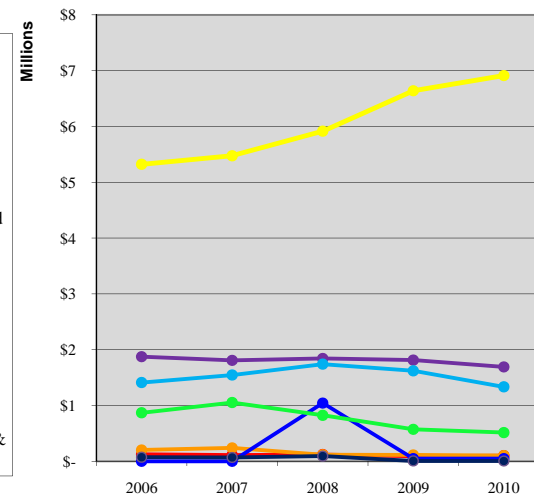
GENERAL & DEBT SERVICE FUND REVENUES

	<u>2006</u>	<u>%</u>	<u>2007</u>	<u>%</u>	<u>2008</u>	<u>%</u>	<u>2009</u>	<u>%</u>	<u>2010</u>	<u>%</u>
Total Revenues										
Taxes	\$ 5,322,956	54%	\$ 5,475,398	53%	\$ 5,916,727	50%	\$ 6,640,573	61%	\$ 6,913,451	65%
Intergovernmental	1,875,712	19%	1,808,949	18%	1,843,957	16%	1,814,270	17%	1,691,669	16%
Licenses and permits	125,633	1%	112,536	1%	120,953	1%	91,081	1%	101,117	1%
Fines, forfeitures and penalties	202,154	2%	241,325	2%	116,279	1%	113,943	1%	102,243	1%
Public charges for services	1,411,430	14%	1,546,449	15%	1,741,906	15%	1,621,702	15%	1,334,468	12%
Intergovernmental charges for services	-	0%	-	0%	1,043,909	9%	48,783	0%	48,783	0%
Special Assessments	73,549	1%	68,528	1%	93,326	1%	6,219	0%	5,589	0%
Investment Income & Miscellaneous	870,139	9%	1,053,259	10%	824,957	7%	573,010	5%	515,373	5%
TOTAL	\$ 9,881,573	100%	\$ 10,306,444	100%	\$ 11,702,014	100%	\$ 10,909,581	100%	\$ 10,712,693	100%

% of Total Revenue



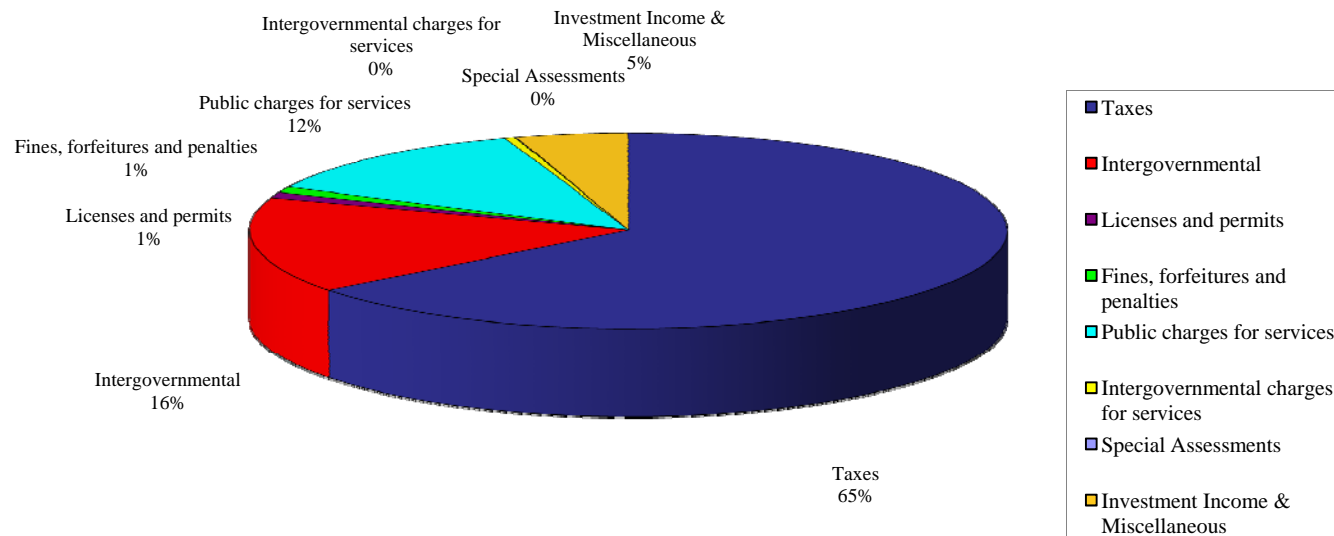
Total Revenue



CITY OF STOUGHTON
2010 FINANCIAL STATEMENT HIGHLIGHTS

2010 GENERAL & DEBT SERVICE FUND REVENUES

Total Revenues: \$10,712,693



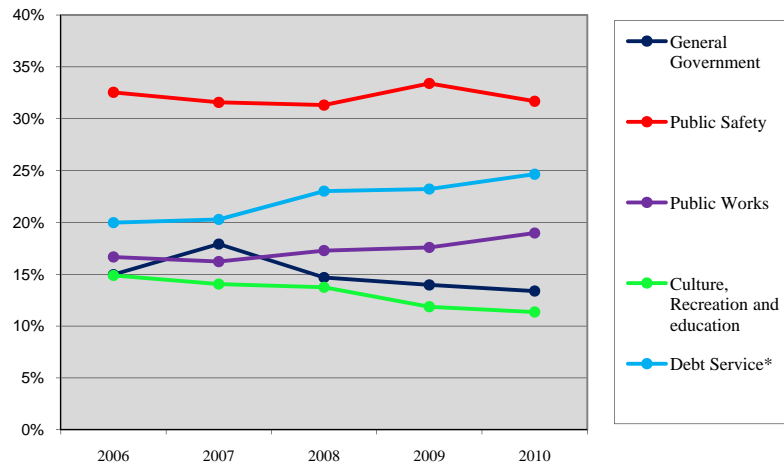
CITY OF STOUGHTON 2010 FINANCIAL STATEMENT HIGHLIGHTS

GENERAL & DEBT SERVICE FUND EXPENDITURES

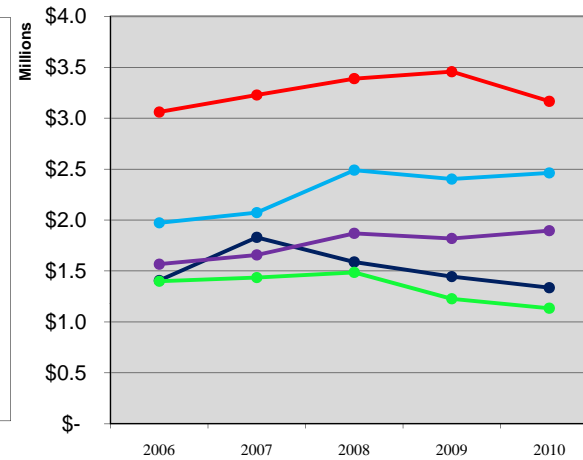
	<u>2006</u>	<u>%</u>	<u>2007</u>	<u>%</u>	<u>2008</u>	<u>%</u>	<u>2009</u>	<u>%</u>	<u>2010</u>	<u>%</u>
Total Expenditures										
General Government	\$ 1,406,792	15%	\$ 1,830,075	18%	\$ 1,588,026	15%	\$ 1,444,752	14%	\$ 1,335,841	13%
Public Safety	3,060,572	33%	3,227,254	32%	3,387,801	31%	3,455,957	33%	3,165,541	32%
Public Works	1,566,975	17%	1,657,422	16%	1,869,375	17%	1,818,931	18%	1,895,576	19%
Culture, recreation and education	1,399,383	15%	1,435,572	14%	1,486,394	14%	1,226,810	12%	1,134,183	11%
Debt Service*	1,972,598	20%	2,072,837	20%	2,489,682	23%	2,402,076	23%	2,462,332	25%
TOTAL	\$ 9,406,320	100%	\$ 10,223,160	100%	\$ 10,821,278	100%	\$ 10,348,526	100%	\$ 9,993,473	100%

*Excludes debt refunding of \$6,450,000 in 2008, \$3,323,513 in 2009, and \$3,360,000 in 2010.

% of Total Expenditures



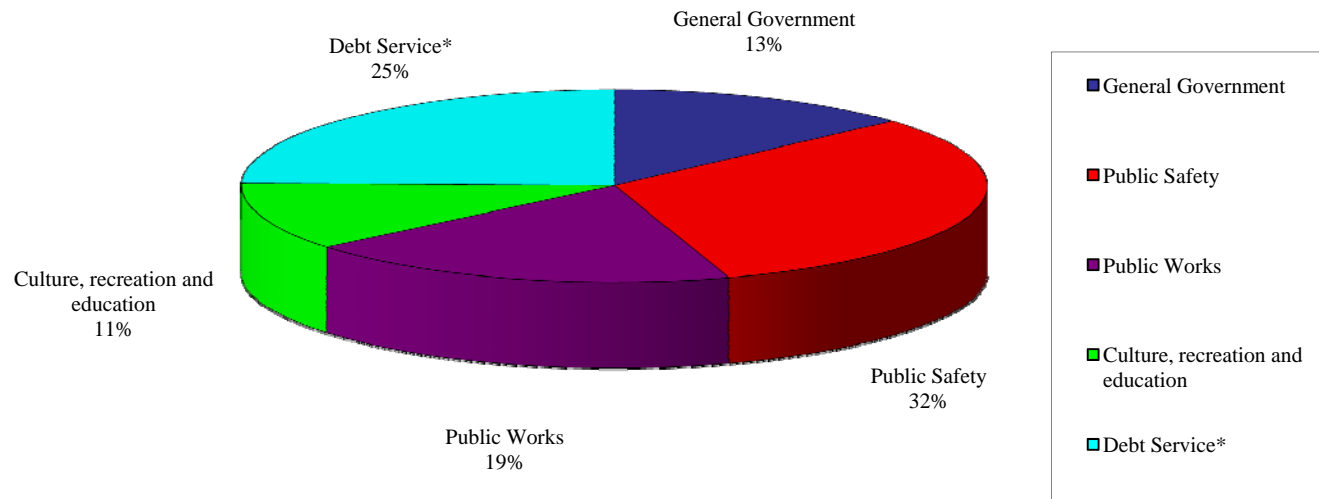
Total Expenditures



CITY OF STOUGHTON
2010 FINANCIAL STATEMENT HIGHLIGHTS

2010 GENERAL & DEBT SERVICE FUND EXPENDITURES

Total Expenditures: \$9,993,473

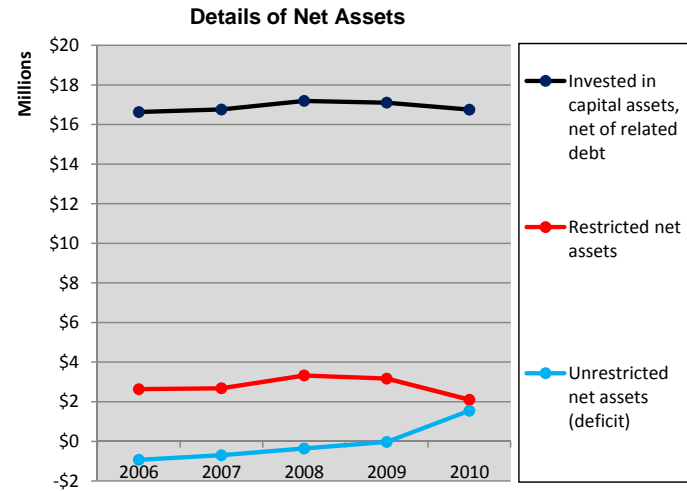
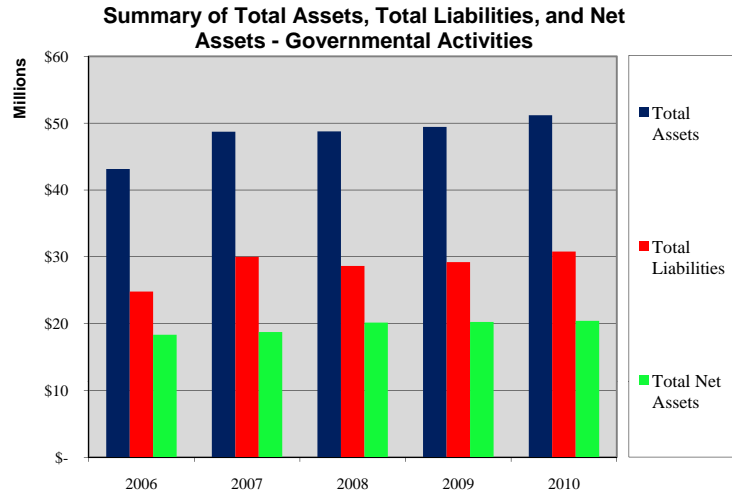


*Excludes debt refunding of \$6,450,000 in 2008, \$3,323,513 in 2009, and \$3,360,000 in 2010.

CITY OF STOUGHTON 2010 FINANCIAL STATEMENT HIGHLIGHTS

ANALYSIS OF NET ASSETS - GOVERNMENTAL ACTIVITIES

	<u>2006</u>	<u>%</u>	<u>2007</u>	<u>%</u>	<u>2008</u>	<u>%</u>	<u>2009</u>	<u>%</u>	<u>2010</u>	<u>%</u>
Total Assets	\$ 43,135,638		\$ 48,722,348		\$ 48,776,972		\$ 49,451,331		\$ 51,182,242	
Total Liabilities	24,801,560		29,982,904		28,619,504		29,208,713		30,780,437	
Invested in capital assets, net of related debt	16,630,968	91%	16,760,731	90%	17,191,617	85%	17,105,770	85%	16,752,659	82%
Restricted net assets	2,635,068	14%	2,680,463	14%	3,325,288	17%	3,167,733	15%	2,102,686	10%
Unrestricted net assets (deficit)	(931,958)	-5%	(701,750)	-4%	(359,437)	-2%	(30,885)	0%	1,546,460	8%
Total Net Assets	<u>\$ 18,334,078</u>	100%	<u>\$ 18,739,444</u>	100%	<u>\$ 20,157,468</u>	100%	<u>\$ 20,242,618</u>	100%	<u>\$ 20,401,805</u>	100%
Net Assets as a % of Total Assets		43%		38%		41%		41%		40%



Over time, increases or decreases in net assets may serve as a useful indicator of whether the financial position of the City is improving or deteriorating.

CITY OF STOUGHTON
2010 FINANCIAL STATEMENT HIGHLIGHTS

HISTORICAL SUMMARY OF TAX INCREMENTAL FINANCING DISTRICTS
FROM DATE OF CREATION THROUGH DECEMBER 31, 2010

	<u>TIF District No. 3</u>	%	<u>TIF District No. 4</u>	%	<u>TIF District No. 5</u>	%
<u>Sources of funds</u>						
TIF increment	\$ 1,841,813	23%	\$ 654,461	14%	\$ -	0%
Intergovernmental	3,564	0%	118,720	2%	-	0%
Public charges for services	1,910	0%	-	0%	-	0%
Contribution from other district	742,340	9%	719,471	15%	-	0%
Transfers from other funds	181,304	2%	-	0%	100,000	47%
Investment income	52,361	1%	105,893	2%	-	0%
Land sales	370,024	5%	-	0%	114,870	53%
Miscellaneous revenues	1,105,126	14%	48,141	2%	-	0%
Long-term debt issued	<u>3,632,496</u>	46%	<u>3,160,750</u>	65%	<u>-</u>	0%
TOTAL	<u>\$ 7,930,938</u>	100%	<u>\$ 4,807,436</u>	100%	<u>\$ 214,870</u>	100%
<u>Uses of Funds</u>						
Capital expenditures	\$ 2,203,275	32%	\$ 2,205,486	43%	\$ 463,394	100%
Administration	56,267	1%	46,545	1%	-	0%
Contribution to other district	420,699	6%	-	0%	-	0%
Debt issuance costs	-	0%	26,075	1%	-	0%
Interest on long-term debt	1,155,713	17%	671,134	13%	-	0%
Principal on long-term debt	<u>2,967,058</u>	44%	<u>2,170,299</u>	42%	<u>-</u>	0%
TOTAL	<u>\$ 6,803,012</u>	100%	<u>\$ 5,119,539</u>	100%	<u>\$ 463,394</u>	100%
TIF Fund Balance - December 31, 2010	\$ 1,127,926		\$ (312,103)		\$ (248,524)	
<u>Calculation of Net Cost Recoverable through TIF Increments</u>						
General obligation debt outstanding	665,438		990,451		-	
Less: TIF Fund Balance - December 31, 2010	<u>(1,127,926)</u>		<u>312,103</u>		<u>248,524</u>	
Net cost recoverable (recovered) through TIF increments - December 31, 2010	<u>\$ (462,488)</u>		<u>\$ 1,302,554</u>		<u>\$ 248,524</u>	
Creation date:	November 24, 1992		March 23, 1999		March 12, 2010	
Last date to incur project costs:	November 24, 2014		March 23, 2017		March 12, 2032	
Last year to collect increment:	2020		2022		2037	