

# City of Stoughton Stormwater Utility Feasibility Study

Mark Shubak, P.E.  
Strand Associates, Inc.  
July 13, 2010



# Why is the City Considering Stormwater Utility Creation?

- Address Current Mandated Regulatory Requirements While Minimizing Property Tax Impacts
- Improve Equitability of Funding
- Protect and Enhance City's Rivers and Lakes



# Feasibility Study Guided By An 11-Member Technical Advisory Committee

Member	Affiliation
Mayor Donna Olson	City of Stoughton
Alderman Tim Carter	City Council
Alderman Carl Chenoweth	City Council
Rodney Scheel, Dir. Of Planning & Development	City of Stoughton
Laurie Sullivan, Finance Dir./Treasurer	City of Stoughton
Karl Manthe, Street Superintendent	City of Stoughton
Utilities Director Bob Kardasz	Stoughton Utilities
Peter Sveum, President	Coldwell Banker Success Realty
Dennis Barkenhagen	Stoughton School District
Robert Barnett	Citizen
Ken Wahlin	Stoughton Trailers

**Six TAC Meetings Were Held**



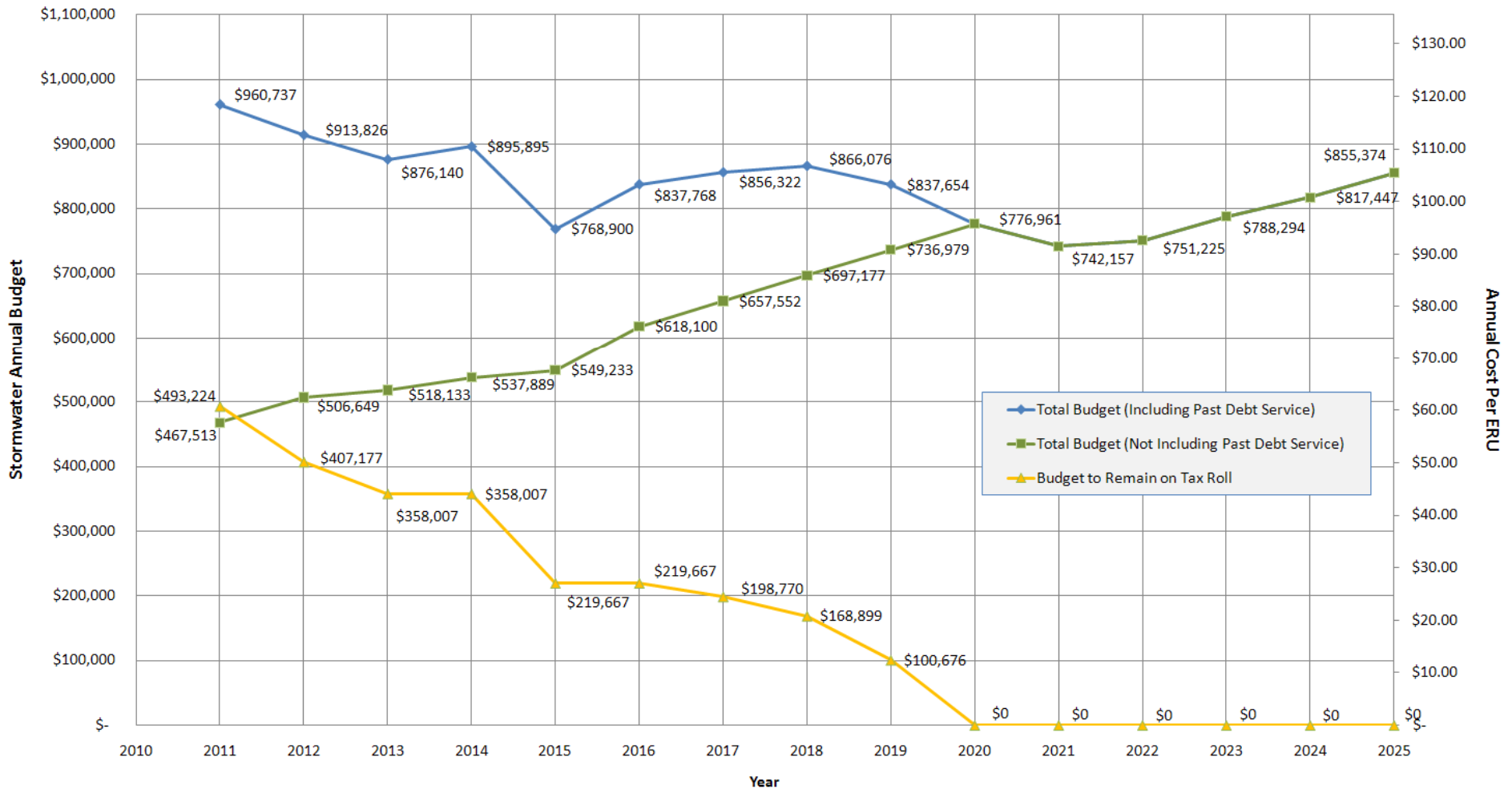
# TAC Meeting Topics of Discussion

- City Stormwater Facilities/Responsibilities Including Mandated Permit Requirements
- Current & Future Stormwater Program Budget and Revenue Needs
- Stormwater Utility Rate Structure
- Stormwater Utility Impacts to Specific Properties
- Potential Credit Policies
- Public Information and Education



# Stormwater Program Budget Projections

City of Stoughton, Stormwater Utility Annual Budget Projections



# TAC Recommended a Phased In Budget Approach

Year	Annual Fee/ERU	Monthly Fee/ERU	Revenue Generated
2011	\$ 21.12	\$ 1.76	\$ 155,800*
2012	\$ 45.79	\$ 3.82	\$ 337,800**
2013	\$ 70.24	\$ 5.85	\$ 518,200
2014	\$ 72.91	\$ 6.08	\$ 537,900
2015	\$ 74.45	\$ 6.20	\$ 549,200

\*33.3% of Anticipated 2011 SW Budget (No Debt from Past Projects)

\*\*66.7% of Anticipated 2012 SW Budget (No Debt from Past Projects)



# Credit Policy Endorsed by TAC

- Single Family Residential Rate Payers Should be Eligible for a One-Time Rebate for such Measures as a Rain Garden or Rain Barrel



# Credit Policy Endorsed by TAC

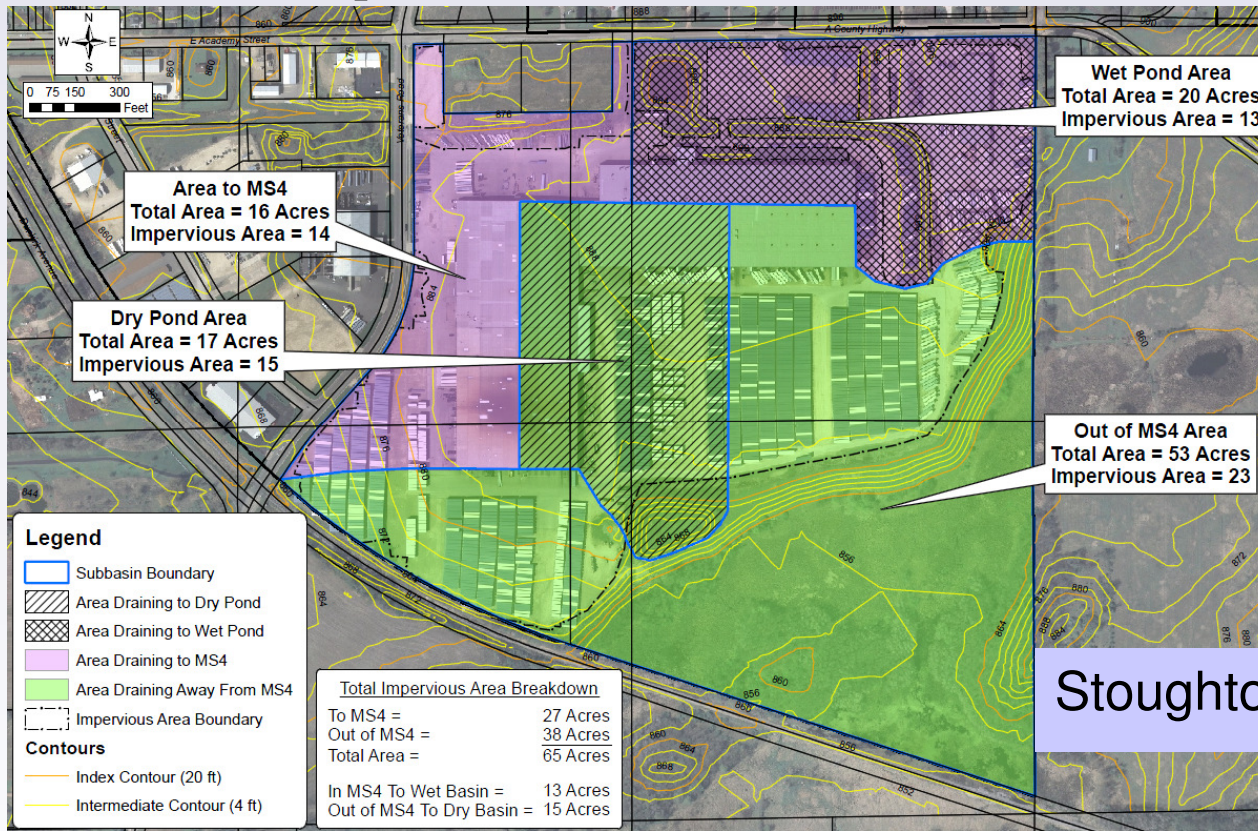
- In Favor of Implementing an Education Credit that Could be Available to Public and Private Schools

## For Non-Single Family Residential Ratepayers:

- Allow for a Fee Adjustment for Directly Discharging Runoff Away from City Stormwater System
- Make Credits Available for Implementing Stormwater Quality and Peak Flow Reduction Measures (No Hard Caps for Each Measure & 50%)



# How Proposed Credit Policy Could Benefit Specific Parcels



6.1% Fee Reduction for Water Quality

7.6% Fee Reduction for Peak Reduction

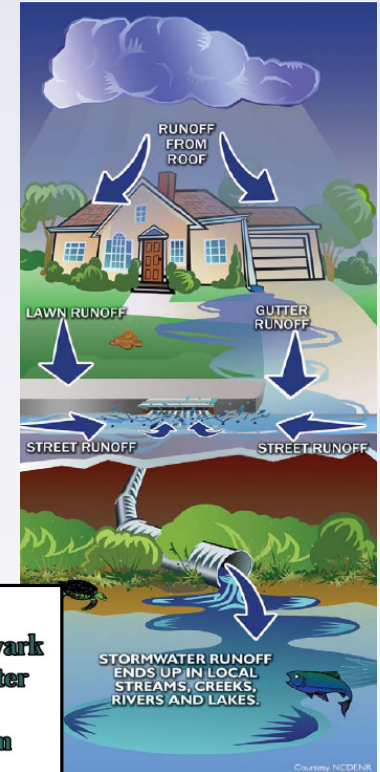
22.2% Fee Reduction for Direct Discharge Adjustment

35.8% Total Fee Reduction



# Emphasis on Public Education and Awareness Will Ensure Utility Buy-in

- Press Release – March 10, 2010
- Web Page – FAQs
- Stormwater Utility Brochure
- Public Information Open House
- Information Meeting With Top Rate Payers
- Bill Stuffers



**FOR MORE INFORMATION**  
City of Newark Public Works Department  
Stormwater Utility  
(302) 366-7040  
[www.cityofnewark.de.us/publicworks/stormwaterutility](http://www.cityofnewark.de.us/publicworks/stormwaterutility)

University of Delaware  
Water Resources Agency  
(302) 831-4929  
[www.usd.edu/wra](http://www.usd.edu/wra)

**Report Spills**  
During Business Hours (8:30 a.m. – 5:00 p.m.)  
City of Newark Emergency Management  
Coordinator, Police Chief Paul Tiernan  
(302) 366-7104.

After Business Hours:  
DNREC Emergency Response Hotline at  
(800) 662-8802.

**City of Newark Stormwater Utility Program**

**NO DUMPING! DRAINS TO CREEK**

**HOW YOU CAN PROTECT OUR WATERWAYS**

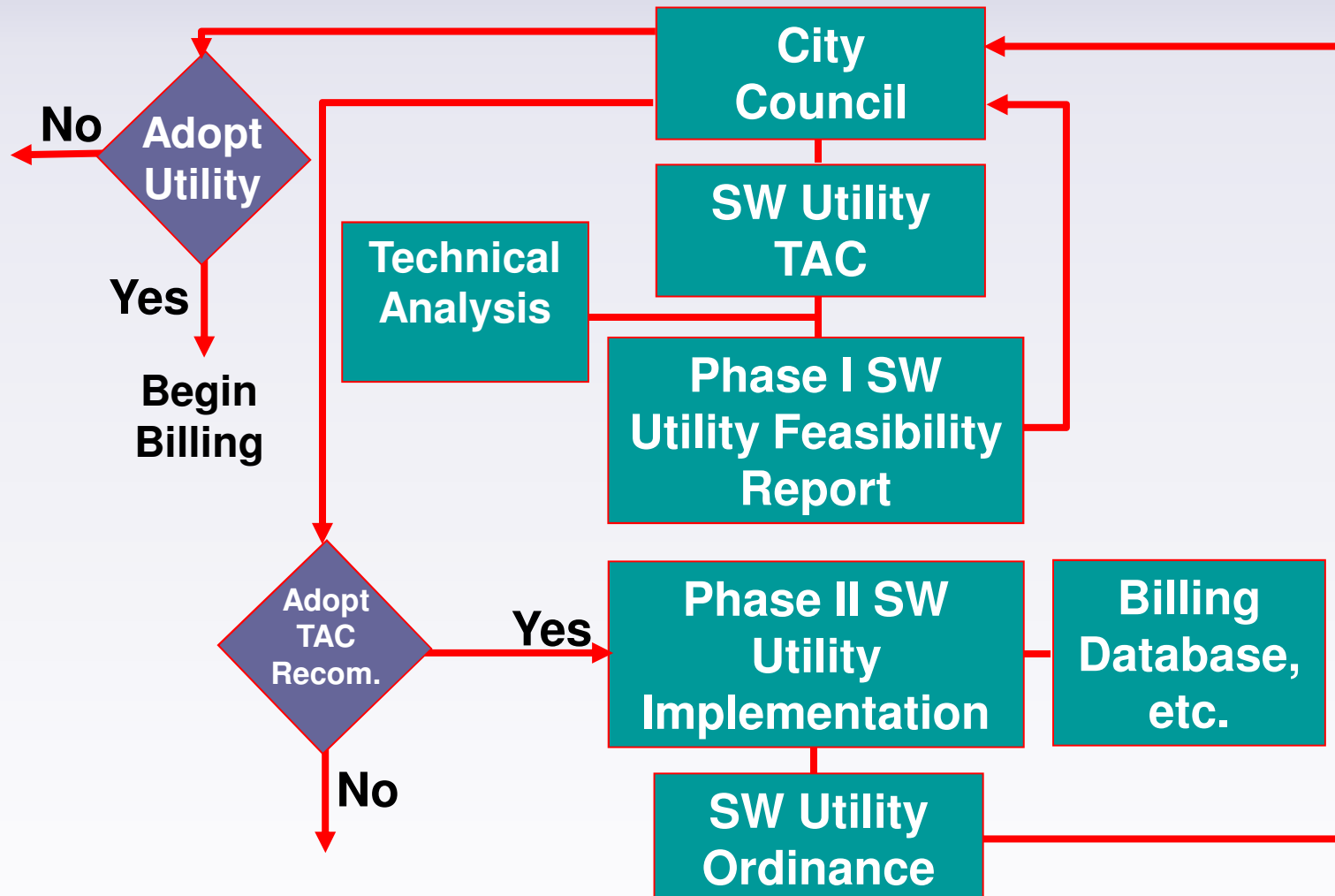
- Test soil at the University of Delaware Soil Testing Program and use only as much fertilizer as you need.
- Never apply fertilizer before a rainstorm.
- Wash your car at a carwash or on the grass.
- Do not dump chemicals down the storm drain.
- Do not place dog waste in the street or down the storm drain. Clean up after walking the dog.
- Use a rain barrel to capture runoff from your roof and use it to water your garden and lawn.
- Build a rain garden, which captures stormwater and allows it to percolate through the soil.
- If you see a clogged storm drain, clean it or call the Public Works Department at (302) 366-7040.
- Keep trash off the street and put it in the trash can so litter does not wash down storm drains.

Public Works Department  
City of Newark, Delaware

The information contained in this brochure was compiled with the assistance of the Water Resources Agency at the University of Delaware.



# Stormwater Utility Decision Making Process



TAC Unanimously Recommended to the City Council  
Approval of the Feasibility Study Report

# Questions?

