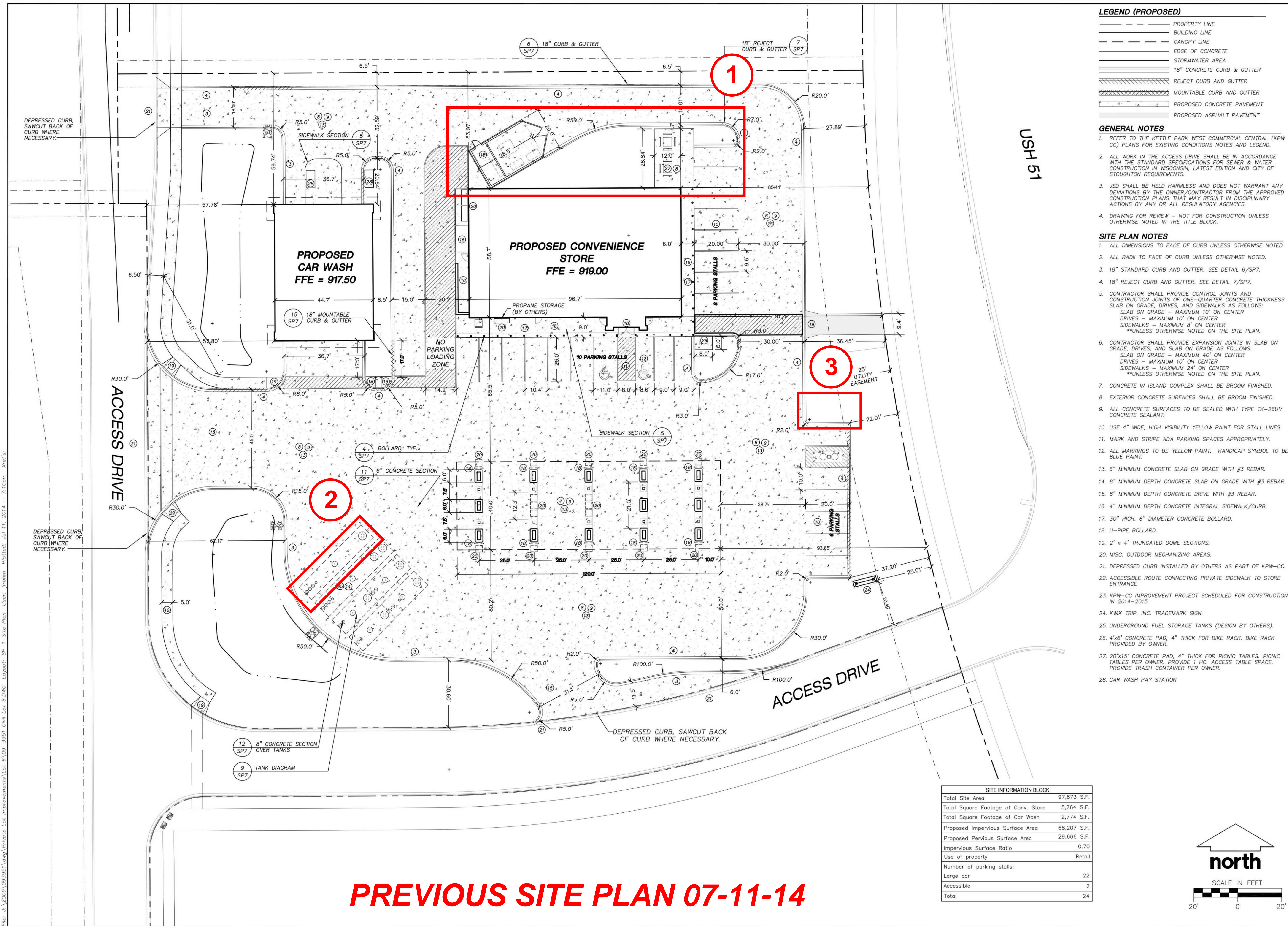


File: J:\2020\083551\dep\improvements\let 6\08-2551 Civil let 6\DWG Layout: SP-1 SITE PLAN User: kshen PlotDate: Dec 23, 2016 - 8:34am xref's



KWIK TRIP STORES

KWIK STAR STORES

KWIK TRIP, Inc.
P.O. BOX 2107
1626 OAK STREET
LACROSSE, WI 54602-2107
PH. (608) 781-8988
FAX (608) 781-8960

JSD Professional Services, Inc.
Engineers • Surveyors • Planners
MADISON REGIONAL OFFICE
161 HORIZON DRIVE SUITE 101
VERONA, WI 53593
608.848.5000 PHONE | 608.848.2255 FAX
MADISON | MILWAUKEE | KENOSHA

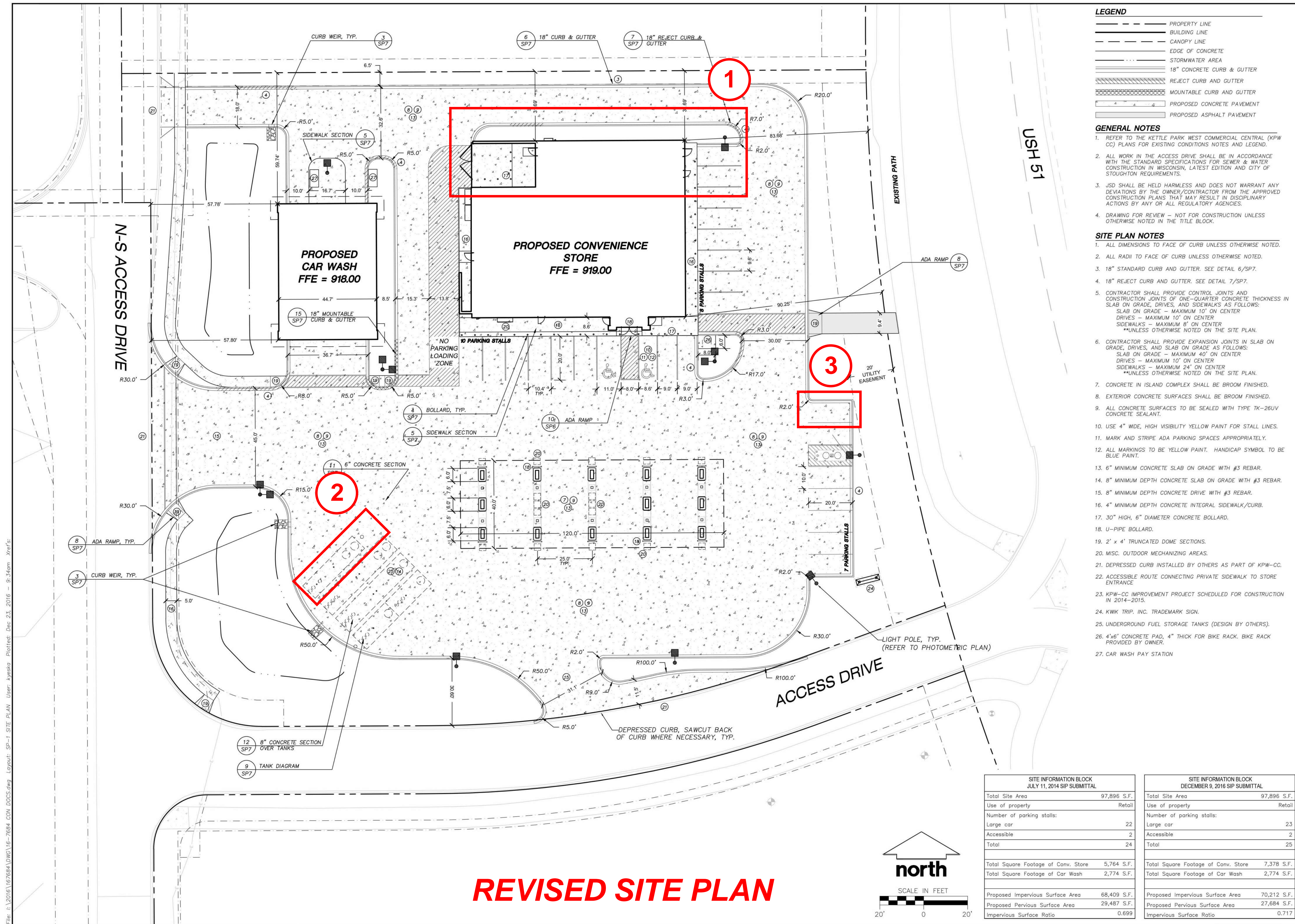
SITE PLAN

CONVENIENCE STORE

NO. DATE DESCRIPTION

1	12-30-13	PLAT SUBMITTAL
2	02-14-14	CITY OF STOUTSVILLE SP
3	02-21-14	CITY OF STOUTSVILLE SP
4	05-29-14	SP SUBMITTAL
5	07-11-14	SP SUBMITTAL

DRAWN BY DOS
SCALE 1" = 20'
PROJ. NO. 09-3991
DATE 07-11-14
SHEET SP1



KWIK TRIP STORES

KWIK STAR STORES

KWIK TRIP, Inc.
P.O. BOX 2107
1626 OAK STREET
LACROSSE, WI 54602-2107
PH. (608) 781-8988
FAX (608) 781-8960

JSD Professional Services, Inc.
Engineers • Surveyors • Planners
MADISON REGIONAL OFFICE
161 HORIZON DRIVE SUITE 101
VERONA, WI 53593
608.848.5000 PHONE | 608.848.2255 FAX
MADISON | MILWAUKEE | KENOSHA

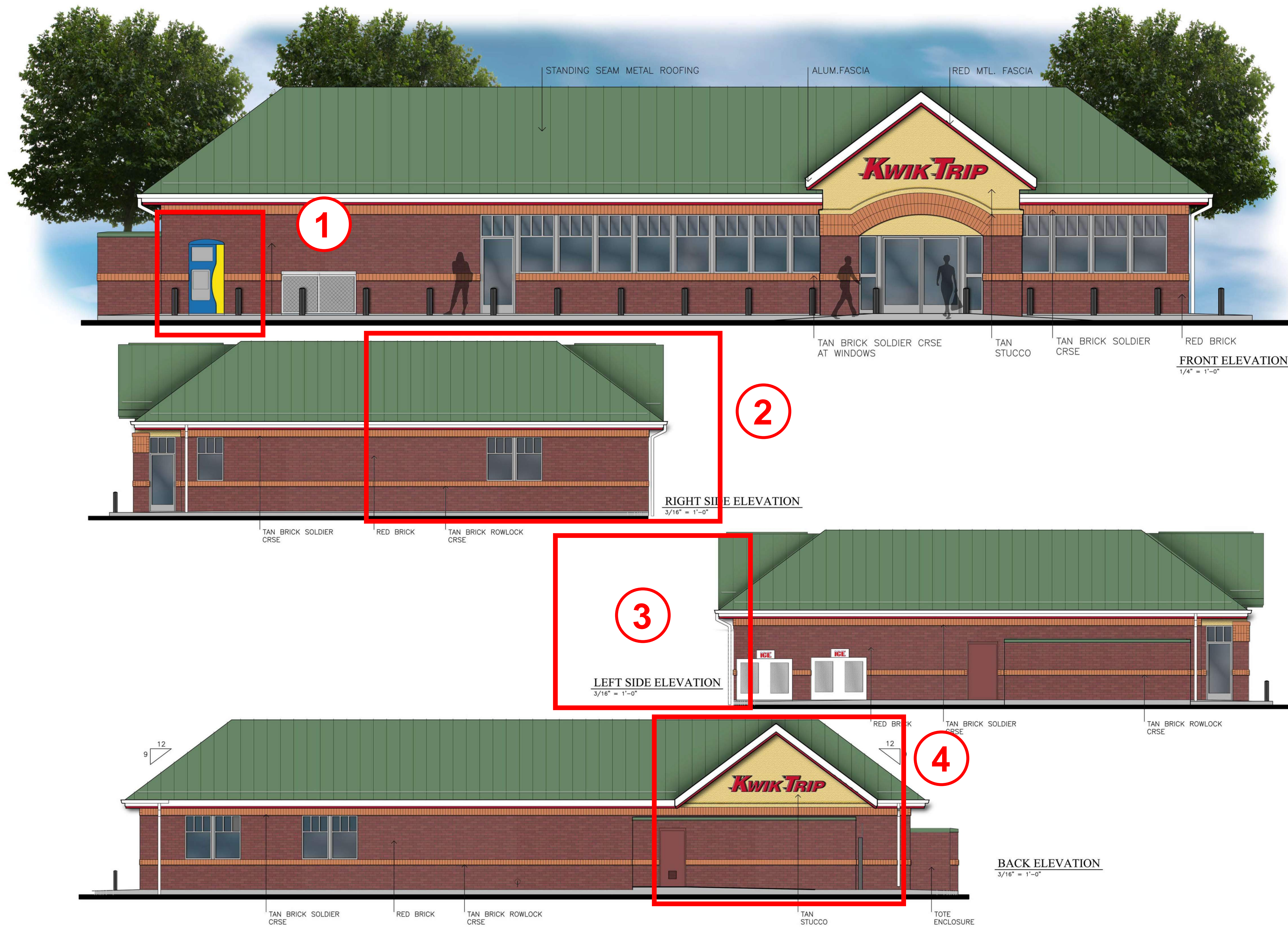
SITE PLAN

CONVENIENCE STORE

NO. DATE DESCRIPTION

1	07-11-14	SP SUBMITTAL
2	12-09-16	SP SUBMITTAL

DRAWN BY M56
SCALE 1" = 20'
PROJ. NO. 16-1684
DATE 12-09-16
SHEET SP1



PREVIOUS ELEVATIONS 07-11-14

LARSON
ARCHITECT
200 Mason Street #3
Onalaska, WI 54650
(608) 784 - 6808
info@larsonarchitect.com

Kwik Trip
STORES
Kwik Star
STORES

96'x58' R

A200



REVISED ELEVATIONS

Kwik Trip
STORES
Kwik Star
STORES

RH WI COMBO
PROTOTYPE

Typical Abbreviations List

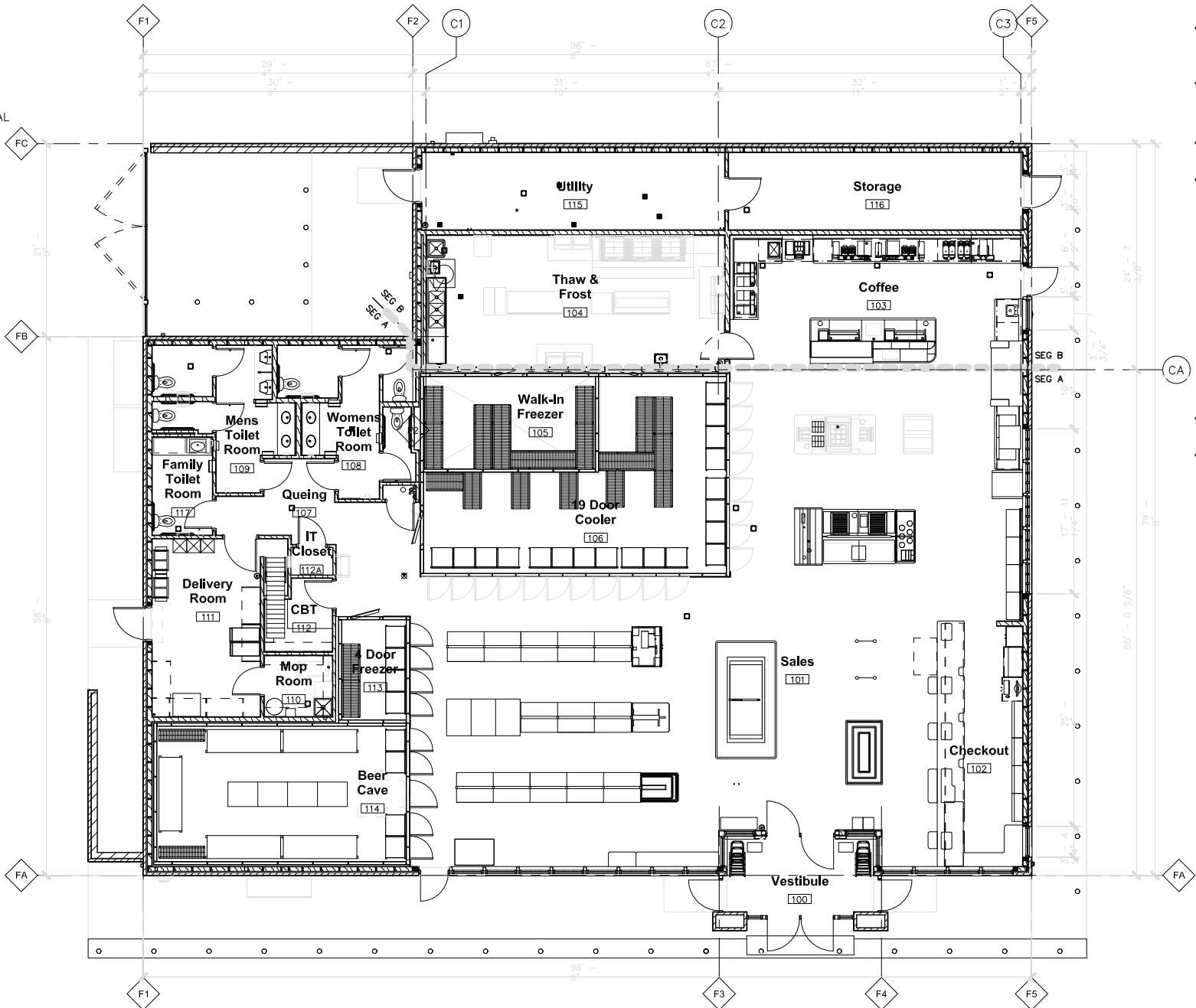
A/C	AIR CONDITIONING	MBD	MARKER BOARD
ACT	ACOUSTICAL CEILING TILE	MAS	MASONRY
AD	AREA DRAIN	MO	MASONRY OPENING
ADJ	ADJUSTABLE	MAX	MAXIMUM
AFF	ABOVE FINISHED FLOOR	MECH	MECHANICAL
ALT	ALTERNATE	MTL	METAL
ALUM	ALUMINUM	MIN	MINIMUM
AP	ACCESS PANEL	NIC	NOT IN CONTRACT
APPROX	APPROXIMATE	NTS	NOT TO SCALE
@	AT	OC	ON CENTER
BD	BOARD	OD	OUTSIDE DIAMETER
BRG	BEARING	OH	OVERHEAD
BIT	BITUMINOUS	PNT	PAINT
BLKG	BLOCKING	PLAS	PLASTER
BR	BRICK	PLAM	PLASTIC LAMINATE
BLDG	BUILDING	PL	PLATE
BM	BEAM	PLBG	PLUMBING
B.O.	BOTTOM OF	PLYWD	PLYWOOD
BOTT.	BOTTOM	PCT	PORCELAIN CERAMIC TILE
BRG	BEARING	P/C	PRECAST
BTWN.	BETWEEN	P/C TERR	PRECAST TERRAZZO
CAB	CABINET	PREFAB	PREFABRICATED
CB	CONCRETE BLOCK	PREFIN	PREFINISHED
CIP	CAST-IN-PLACE	PT	PRESSURE TREATED
CF	CUBIC FEET	QT	QUARRY TILE
CPT	CARPET	REINF	REINFORCING OR REINFORCEMENT
CLG	CEILING	REQ'D	REQUIRED
CLK	CAULK	R	RISERS
CLR	CLEAR	RD	ROOF DRAIN
CT	CERAMIC TILE	RFG	ROOFING
CTR	CENTER	RFS	ROOM FINISH SCHEDULE
CO	CLEAN OUT	RM	ROOM
COL	COLUMN	SCHED	SCHEDULE
CONC	CONCRETE	S	SEALED
CMU	CONCRETE MASONRY UNIT	SIM	SIMILAR
CONT	CONTINUOUS	SC	SOLID CORE
CONST	CONSTRUCTION	S.SURF	SOLID SURFACE
CONTR	CONTRACTOR	SPEC	SPECIFICATION
CJ	CONTROL JOINT	ST	STAIN
COORD	COORDINATE	SS	STAINLESS STEEL
CRPT	CARPET	STRUCT	STRUCTURE OR STRUCTURAL
CY	CUBIC YARD	SW	SITE WASTE
DBL	DOUBLE	TBD	TACKBOARD
DET	DETAIL	TEMP	TEMPERED
DIA	DIAMETER	TERR T	TERRAZZO TILE
DIAG	DIAGONAL	T&G	TONGUE & GROOVE
DIM	DIMENSION	T/	TOP OF
DIST	DISTANCE	TP	TOILET PARTITION
DN	DOWN	TR	TREADS
DRS	DOORS	TYP	TYPICAL
DS	DOWNSPOUT	UNFIN	UNFINISHED
EWC	ELECTRIC WATER CHILLER	VB	VAPOR BARRIER
ELECT	ELECTRICAL	VERT	VERTICALLY
EL	ELEVATION	VCT	VINYL COMPOSITION TILE
ELEV	ELEVATOR	VWC	VINYL WALL COVERING
EP	EPOXY PAINT	VB	VINYL BASE
EQUIP	EQUIPMENT	WWF	WELDED WIRE FABRIC
EXIST	EXISTING	WDW	WINDOW
EPS	EXPANDED POLYSTYRENE	W/	WITH
EXP	EXPOSED	WD	WOOD
EXT	EXTERIOR		
EIFS	EXTERIOR INSULATION FINISH SYSTEM		
FV	FIELD VERIFY		
FIN	FINISH		
FE	FIRE EXTINGUISHER		
FL	FLOOR		
FD	FLOOR DRAIN		
FTG	FOOTING		
FDN	FOUNDATION		
GEN	GENERAL		
GC	GENERAL CONTRACTOR		
GL	GLASS OR GLAZING		
GFCMU	GROUND FACE CMU		
GYP BD	GYPSUM BOARD		
H&V	HEATING & VENTILATION		
HC	HOLLOW CORE		
HM	HOLLOW METAL		
HO	HOLD OPEN ARM		
HR	HOURS		
HYD	HYDRANT		
INSUL	INSULATION		
INT	INTERIOR		
JT	JOINT		
JST	JOIST		

Graphic Symbols

Room name [101]	ROOM TAG
1 A101	SECTION CALLOUT
A101	ELEVATION CALLOUT
1 A101	DETAIL CALLOUT
10	DOOR NUMBER
CW-	CURTAIN WALL TYPE
A1	WALL TYPE
⬆	VERTICAL WORKING POINT ELEVATION
⚠	REVISION INDICATOR
0	GRID LINE - CENTER OF STEEL STUD

Material Symbols

	EARTH
	CONCRETE
	CONCRETE MASONRY UNIT
	FACE BRICK
	SPRAY-FOAM INSULATION
	STRUCTURAL STEEL
	BATT INSULATION
	ROUGH LUMBER
	RIGID INSULATION
	GYPSUM BOARD
	PLYWOOD



1 OVERALL FLOOR PLAN
1/8" =
1'-0"

THERMAL ENVELOPE NOTES

RETAIL STORE	
AREA	SYSTEM
COLD ATTIC CEILING:	1. R-38 BLOWN FIBERGLASS WITH 4 MIL POLY VAPOR BARRIER AT GYP. BD. SURFACES. PROVIDE DEPTH MARKERS
KNEE WALL AT CEILING:	1. R-21 SPRAY FOAM POLYURETHANE (3") USE FOAM APPROVED FOR NO THERMAL OR IGNITION BARRIER ATTIC.
EXTERIOR WALLS:	1A. TYPICAL EXTERIOR WALLS: R-19 FIBERGLASS BATT WITH VAPOR BARRIER COATING ON ALL INTERIOR GYP. BD. SURFACES 1B. WALLS AT FREEZER AND COOLER: R-19 FIBERGLASS BATT WITH 5/8" DENS SHIELD, BEAD OF SEALANT AT ALL EDGES. NO ADDITIONAL FINISH OR VAPOR BARRIER. NO TAPE OR PAINT. 2. PACK ALL DOOR AND WINDOW VOIDS. 3. FOAM ALL PENETRATIONS. 4. SEAL ALL VAPOR BARRIER PENETRATIONS (OUTLETS, LIGHT FIXTURES, ETC.) 5. USE VAPOR BARRIER COATING ON ALL INTERIOR DENS SHIELD SURFACES.
INTERIOR WALLS:	1. NO SOUND INSULATION
ROOF:	1. R-25 POLYISOCYANURATE (4") 2 LAYERS W/ STAGGERED JOINTS. BOTTOM LAYER TO BE FIRESTONE RESISTA (1" MIN) FOR THERMAL BARRIER
FOUNDATION PERIMETER:	1. R-10 EXTRUDED RIGID INSULATION (2"THICK). SEE SPEC. CONTINUOUS FROM TOP OF FOOTING TO TOP OF FOUNDATION WALL.

AIR BARRIER

- TAPE JOINTS IN "TYVEK" BUILDING WRAP.
- AIR BARRIER AT KNEE WALL WITHIN TRUSS SPACE, BETWEEN STORE AND ATTIC IS 3" CLOSED CELL SPRAY FOAM OVER GYPSUM BOARD THERMAL BARRIER.
- SEAL ALL UTILITY PENETRATIONS.
- SEAL ALL WINDOW AND DOOR FRAMES.
- VAPOR BARRIER:
 - GYP. BD. WALLS AND SPRAY FOAM KNEE WALL PAINTED: HALMAN LINSAY 530-1 FOR PERM RATING OF 0.30
 - DENS SHIELD AT FREEZER AND COOLER WITH PERM RATING 1.5.
 - 4 MIL POLY AT ATTIC CEILING.
 - EXTEND "TYVEK" TO TOP OF WALL SHEATHING. SEE WALL SECTIONS.

FENESTRATION

ALUMINUM WINDOWS:	U = 0.40, SHGC: 0.49
ALUMINUM DOORS:	U = 0.67, SHGC: 0.35
H.M. INSULATED DOORS:	U = 0.44
ALUMINUM DOORS AND WINDOWS VALUES PER NFRC100 BY TUBELITE FOR T14000 WINDOWS AND NARROW STYLE DOORS.	

SYMBOL LEGEND

SEG A	MATCH LINE
SEG B	
F	GRID LINE - FACE OF BRICK VENEER & FOUNDATION WALL
CA	GRID LINE - CENTER OF STEEL



PROJECT TITLE:
Store #893 - Gen 2 - RH
Kwik Trip, Inc.
PROJECT LOCATION:
Stoughton, WI

JOB #:	
DATE:	
DRAWN BY:	
TYPE:	
REVISIONS	
NO.	DATE

SHEET TITLE
Overall Floor Plan & Thermal Envelope Insulation Values & Notes

SHEET NO.
A000

SITE INFORMATION BLOCK
JULY 11, 2014 SIP SUBMITTAL

Total Site Area	97,896 S.F.
Use of property	Retail
Number of parking stalls:	
Large car	22
Accessible	2
Total	24
Total Square Footage of Conv. Store	5,764 S.F.
Total Square Footage of Car Wash	2,774 S.F.
Proposed Impervious Surface Area	68,409 S.F.
Proposed Pervious Surface Area	29,487 S.F.
Impervious Surface Ratio	0.699

SITE INFORMATION BLOCK
DECEMBER 9, 2016 SIP SUBMITTAL

Total Site Area	97,896 S.F.	
Use of property	Retail	
Number of parking stalls:		
Large car	23	←
Accessible	2	←
Total	25	←
Total Square Footage of Conv. Store	7,378 S.F.	←
Total Square Footage of Car Wash	2,774 S.F.	
Proposed Impervious Surface Area	70,212 S.F.	←
Proposed Pervious Surface Area	27,684 S.F.	←
Impervious Surface Ratio	0.717	←

KWIK TRIP

KETTLE PARK WEST LOT 6

DRAWING INDEX

TS1	TITLE SHEET
EX1	EXISTING CONDITIONS MAP
SP1	SITE PLAN
SP2	GRADE AND EROSION CONTROL
SP3	DETAIL GRADING PLAN
SP4	UTILITY PLAN
SP5	DETAILS
SP6	DETAILS
SP7	DETAILS
L1	LANDSCAPE PLAN
L2	LANDSCAPE DETAILS AND SPECIFICATIONS

CITY OF STOUGHTON, WISCONSIN



PROJECT AREA

SCALE: NTS



PROJECT CONTACTS

CITY OF STOUGHTON UTILITIES (SEWER, ELECTRICAL, WATER)
600 SOUTH FOURTH STREET
STOUGHTON, WI 53589
608-877-7423 (Office)
CONTACT: BRETT HEBERT
bhebert@StoughtonUtilities.com

CITY OF STOUGHTON STREETS & PARKS
515 SOUTH FOURTH STREET
STOUGHTON, WI 53589
608-873-6303 (Office)
CONTACT: KARL MANTHE
kmanthe@ci.stoughton.wi.us

CITY OF STOUGHTON FIRE DEPARTMENT
381 EAST MAIN STREET
STOUGHTON, WI 53589
608-873-7218 (Office)
CONTACT: MARTIN LAMERS
mlamers@ci.stoughton.wi.us

CITY OF STOUGHTON POLICE DEPARTMENT
321 SOUTH FOURTH STREET
STOUGHTON, WI 53589
608-873-3374 (Office)
CONTACT: GREG LECK
gieck@ci.stoughton.wi.us

GAS
ALLIANT ENERGY
1521 PROGRESS LANE
STOUGHTON, WI 53589-5304
CONTACT: PAT MUELLER
920-948-3527 (Office)
patmueller@alliantenergy.com

TELEPHONE
AT&T
P.O. BOX 791
MADISON, WI 53701-0791
CONTACT: BRIAN SCHOLZ
bs3154@att.com

CABLE TV
CHARTER COMMUNICATIONS
1348 Plainfield Ave.
Janesville, WI 53545
CONTACT: DAVID MOLDENHAUER
608-206-0494 (Mobile)
david.moldenhauer@charter.com

WISCONSIN DEPARTMENT OF TRANSPORTATION
3550 MORMON COULEE ROAD
LA CROSSE, WISCONSIN 54601
CONTACT: MARK GOGGIN
608-789-5955 (Office)
mark.gaggin@dot.wi.gov

KWIK TRIP

STORES

KWIK STAR

STORES

KWIK TRIP, Inc.
P.O. BOX 2107
1626 OAK STREET
LACROSSE, WI 54602-2107
PH. (608) 781-8988
FAX (608) 781-8960

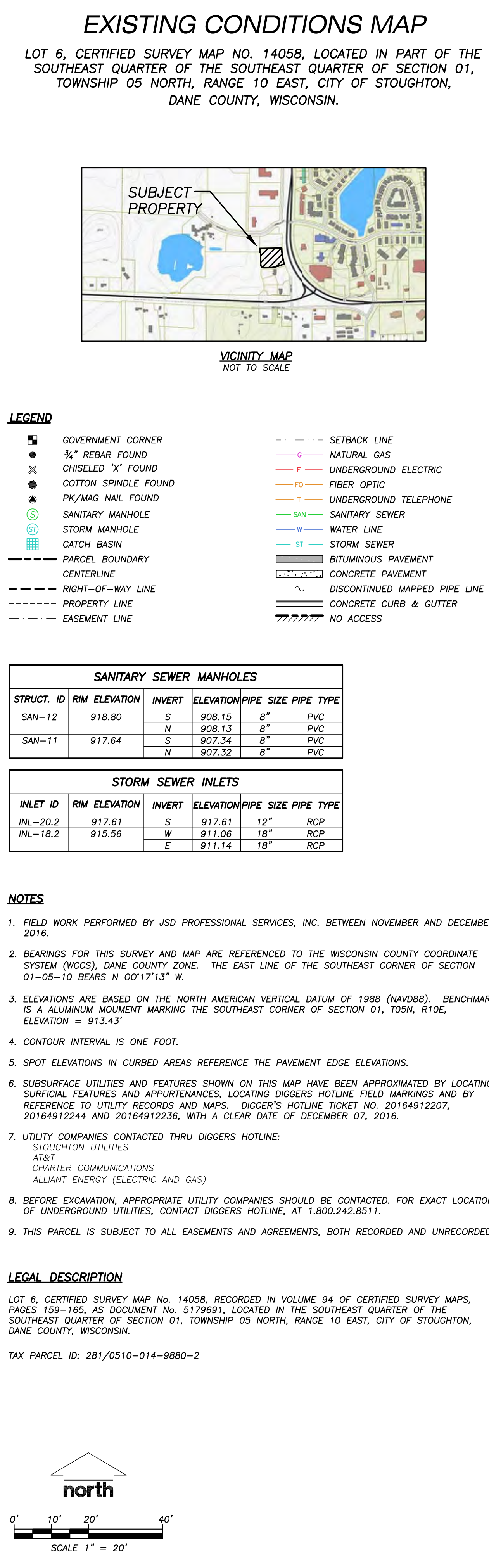
JSD Professional Services, Inc.
• Engineers • Surveyors • Planners
MADISON REGIONAL OFFICE
161 HORIZON DRIVE SUITE 101
VERONA, WI 53590
608.848.5060 PHONE | 608.848.2255 FAX
MADISON | MILWAUKEE | KENOSHA

TITLE SHEET

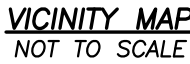
CONVENIENCE STORE

NO.	DATE	DESCRIPTION
1	07-11-14	SP SUBMITTAL
2	12-09-16	SP RESUBMITTAL

DRAWN BY	MSS
SCALE	1" = 20'
PROJ. NO.	16-1684
DATE	12-09-16
SHEET	TS1



LOT 6, CERTIFIED SURVEY MAP NO. 14058, LOCATED IN PART OF THE
SOUTHEAST QUARTER OF THE SOUTHEAST QUARTER OF SECTION 01,
TOWNSHIP 05 NORTH, RANGE 10 EAST, CITY OF STOUGHTON,
DANE COUNTY, WISCONSIN.



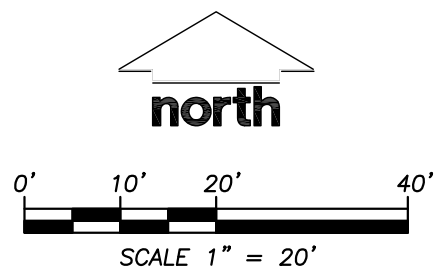
	GOVERNMENT CORNER		SETBACK LINE
	3/4" REBAR FOUND		NATURAL GAS
	CHISELED 'X' FOUND		UNDERGROUND ELECTRIC
	COTTON SPINDLE FOUND		FIBER OPTIC
	PK/MAG NAIL FOUND		UNDERGROUND TELEPHONE
	SANITARY MANHOLE		SANITARY SEWER
	STORM MANHOLE		WATER LINE
	CATCH BASIN		STORM SEWER
	PARCEL BOUNDARY		BITUMINOUS PAVEMENT
	CENTERLINE		CONCRETE PAVEMENT
	RIGHT-OF-WAY LINE		DISCONTINUED MAPPED PIPE LINE
	PROPERTY LINE		CONCRETE CURB & GUTTER
	EASEMENT LINE		NO ACCESS

STORM SEWER INLETS					
INLET ID	RIM ELEVATION	INVERT	ELEVATION	PIPE SIZE	PIPE TYPE
INL-20.2	917.61	S	917.61	12"	RCP
INL-18.2	915.56	W	911.06	18"	RCP
		E	911.14	18"	RCP

1. FIELD WORK PERFORMED BY JSD PROFESSIONAL SERVICES, INC. BETWEEN NOVEMBER AND DECEMBER 2016.
2. BEARINGS FOR THIS SURVEY AND MAP ARE REFERENCED TO THE WISCONSIN COUNTY COORDINATE SYSTEM (WCCS), DANE COUNTY ZONE. THE EAST LINE OF THE SOUTHEAST CORNER OF SECTION 01-05-10 BEARS N 00°17'13" W.
3. ELEVATIONS ARE BASED ON THE NORTH AMERICAN VERTICAL DATUM OF 1988 (NAVD88). BENCHMARK IS A ALUMINUM MOUNTAIN MARKING THE SOUTHEAST CORNER OF SECTION 01, T05N, R10E, ELEVATION = 913.43'
4. CLOUTER INTERVAL IS ONE FOOT.
5. SPOT ELEVATIONS IN CURBED AREAS REFERENCE THE PAVEMENT EDGE ELEVATIONS.
6. SUBSURFACE UTILITIES AND FEATURES SHOWN ON THIS MAP HAVE BEEN APPROXIMATED BY LOCATING SURFICIAL FEATURES AND APPURTENANCES, LOCATING DIGGERS HOTLINE FIELD MARKINGS AND BY REFERENCE TO UTILITY RECORDS AND MAPS. DIGGER'S HOTLINE TICKET NO. 20164912207, 20164912244 AND 20164912236, WITH A CLEAR DATE OF DECEMBER 07, 2016.
7. UTILITY COMPANIES CONTACTED THRU DIGGERS HOTLINE:
STOUGHTON UTILITIES
AT&T
CHARTER COMMUNICATIONS
ALLIANT ENERGY (ELECTRIC AND GAS)
8. BEFORE EXCAVATION, APPROPRIATE UTILITY COMPANIES SHOULD BE CONTACTED. FOR EXACT LOCATION OF UNDERGROUND UTILITIES, CONTACT DIGGERS HOTLINE, AT 1.800.242.8511.
9. THIS PARCEL IS SUBJECT TO ALL EASEMENTS AND AGREEMENTS, BOTH RECORDED AND UNRECORDED.

LOT 6, CERTIFIED SURVEY MAP No. 14058, RECORDED IN VOLUME 94 OF CERTIFIED SURVEY MAPS, PAGES 159-165, AS DOCUMENT No. 5179691, LOCATED IN THE SOUTHEAST QUARTER OF THE SOUTHEAST QUARTER OF SECTION 01, TOWNSHIP 05 NORTH, RANGE 10 EAST, CITY OF STOUGHTON, DANE COUNTY, WISCONSIN.

TAX PARCEL ID: 281/0510-014-9880-2



KWIK TRIP, Inc.
P.O. BOX 2107
1626 OAK STREET
LACROSSE, WI 54602-2107
PH. (608) 781-8988
FAX (608) 781-8960

JSD Professional Services, Inc.
• Engineers • Surveyors • Planners
MADISON REGIONAL OFFICE
161 HORIZON DRIVE SUITE 101
VERONA, WI 53560
608.848.5060 PHONE | 608.848.2255 FAX
MADISON | MILWAUKEE | KENOSHA

CONVENIENCE STORE

NO.	DATE	DESCRIPTION
1	07-11-14	SP SUBMITTAL
2	12-09-16	SP RESUBMITTAL

DRAWN BY CJD

SCALE 1" = 20'

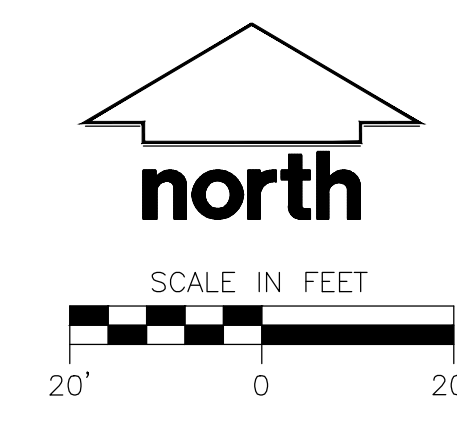
PROJ. NO. 16-7684

DATE 12-09-16

SHEET

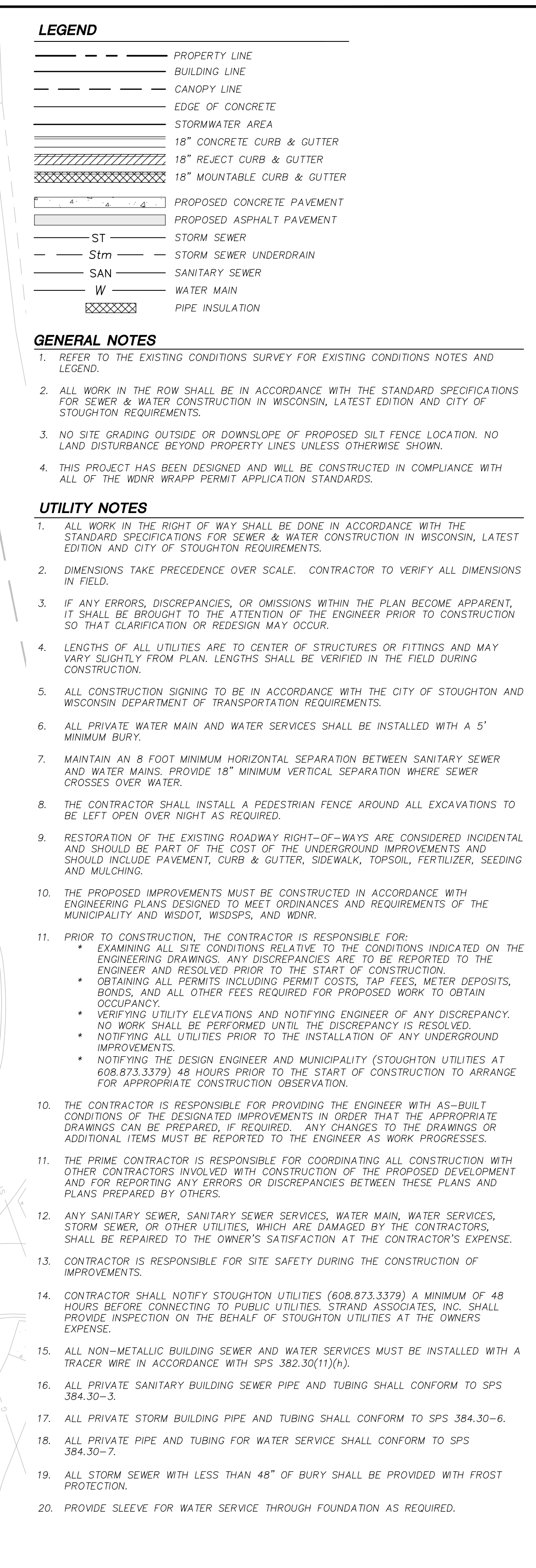
EX1

EX1



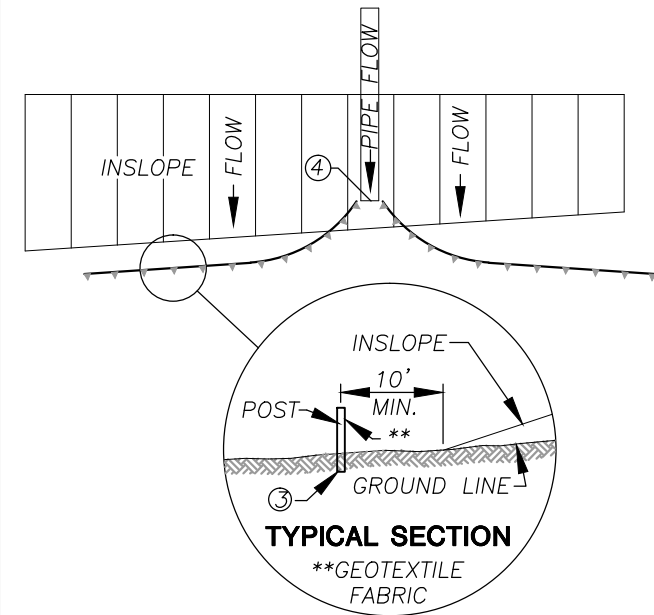
SITE INFORMATION BLOCK DECEMBER 9, 2016 SIP SUBMITTAL	
Total Site Area	97,896 S.F.
Use of property	Retail
Number of parking stalls:	
Large car	23
Accessible	2
Total	25
Total Square Footage of Conv. Store	7,378 S.F.
Total Square Footage of Car Wash	2,774 S.F.
Proposed Impervious Surface Area	70,212 S.F.
Proposed Pervious Surface Area	27,684 S.F.
Impervious Surface Ratio	0.717

File: I:\2016\167684\DWG\16-7684 CON DOCS.dwg User: kyeska Plotted: Dec 27, 2016 - 11:21am Xrefs:



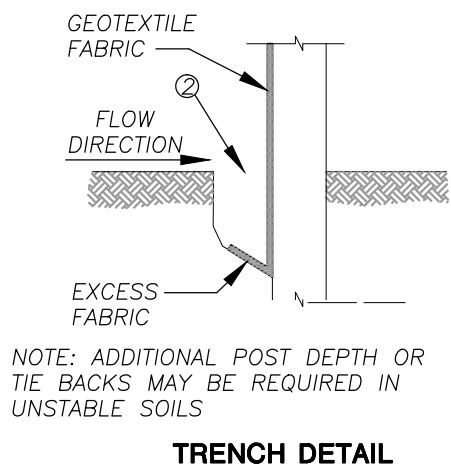
PROPOSED STORM SEWER STRUCTURES SCHEDULE					
LABEL	INVERT ELEV. (FT)	RIM ELEV. (FT)	DEPTH (FT)	STRUCTURE DESCRIPTION	GRATE
STM MH NO. 1	910.73	915.00	4.27	36" DIA MANHOLE	R-4380-32, FLAT BAR DRAINAGE GRATE, 4' SUMP WINV= 906.73
STM MH NO. 2	911.44	916.80	5.36	60" DIA MANHOLE (OSCB)	R-4380-32, FLAT BAR DRAINAGE GRATE, 4' SUMP WINV= 907.44
STM INL NO. 3	914.48	917.20	2.72	2X3 BOX	R-3067, INLET FRAME, TYPE R GRATE
STM INL NO. 4	914.83	917.13	2.30	2X3 BOX	R-3067, INLET FRAME, TYPE R GRATE
STM INL NO. 5	915.10	917.89	2.79	2X3 BOX	R-3067, INLET FRAME, TYPE R GRATE
TRENCH DRAIN 6	915.23	917.20	1.97	TRENCH DRAIN	R-4999-CX, TYPE C GRATE

File: I:\2016\167684\DWG\16-7684 CON DOCS.dwg Layout: SP-4 UTILITY User: kyesko Plotted: Dec 23, 2016 - 9:34am Xref's:

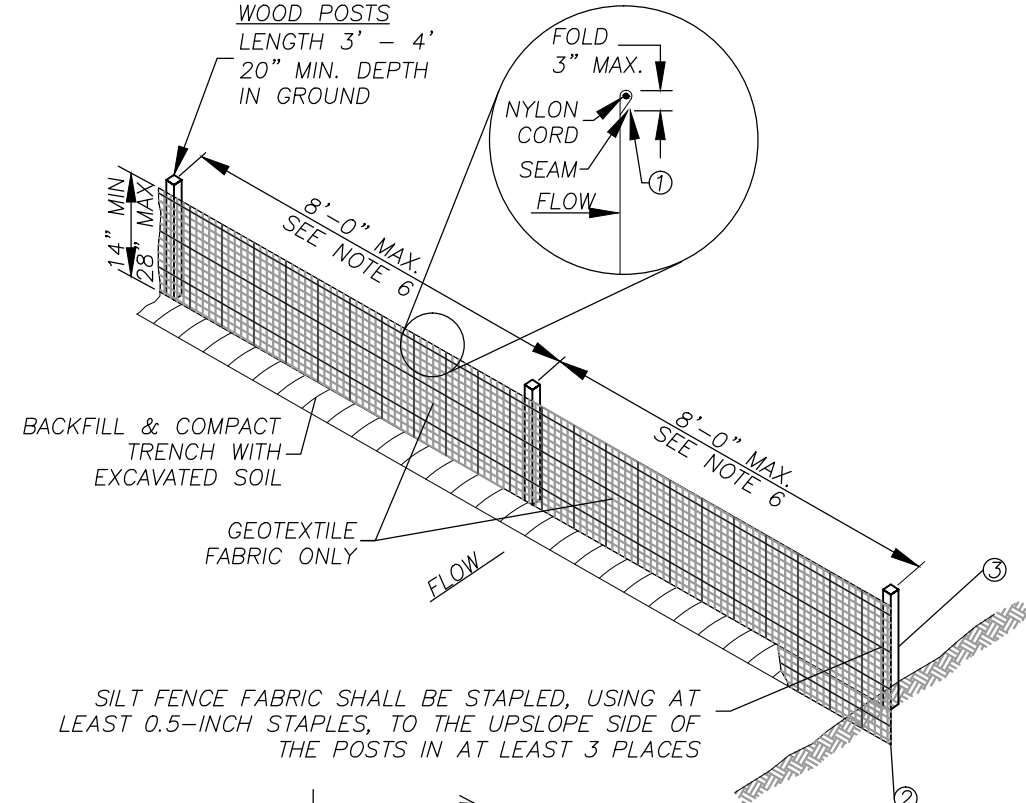
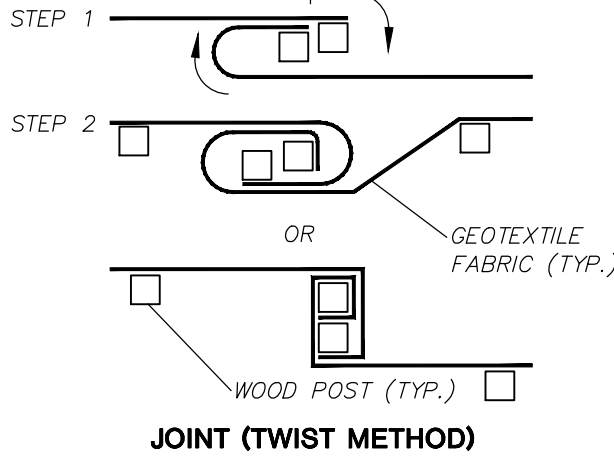


SILT FENCE ALONG SLOPES & OUTFALLS

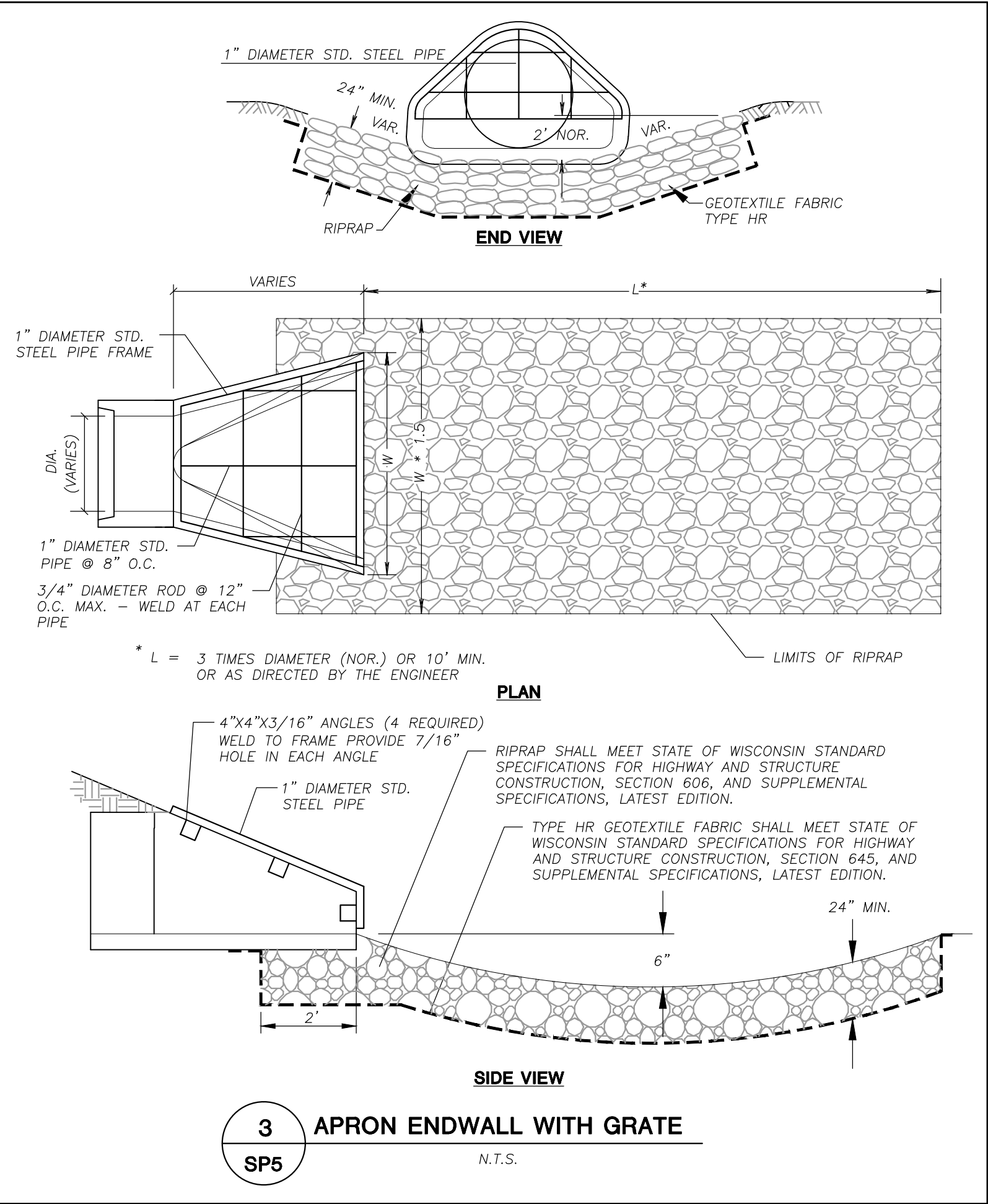
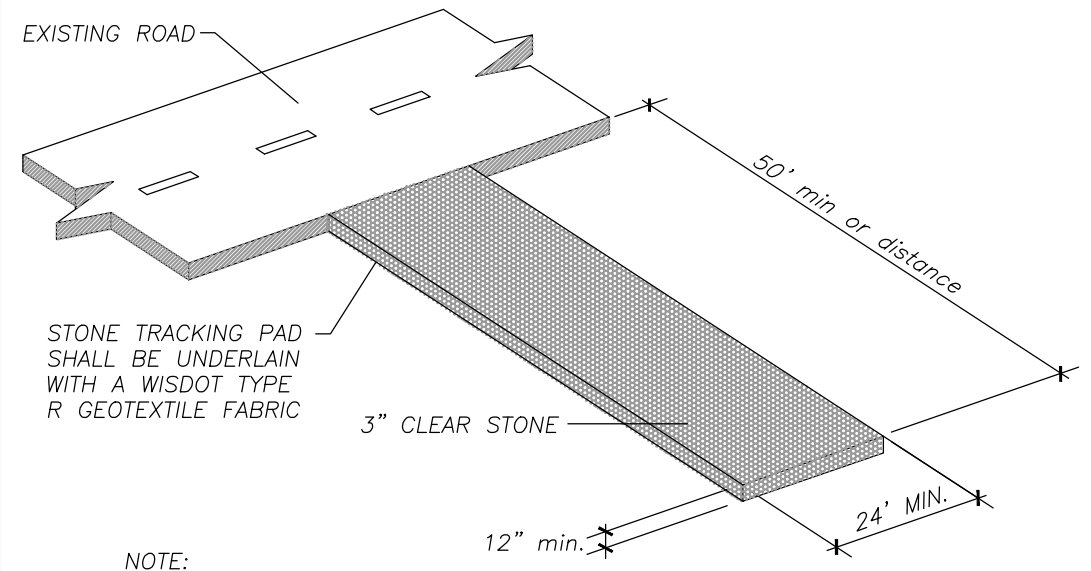
1. SILT FENCE SHALL BE ANCHORED BY SPREADING AT LEAST 8 INCHES OF FABRIC IN A 4" WIDE AND 6" DEEP TRENCH OR 6 INCH DEEP V-TRENCH ON THE UPSLOPE SIDE OF THE FENCE. TRENCHES SHALL NOT BE EXCAVATED WIDER OR DEEPER THAN NECESSARY FOR PROPER INSTALLATION.
2. FOLD MATERIAL TO FIT TRENCH AND BACKFILL AND COMPACT TRENCH WITH EXCAVATED SOIL.
3. WOOD POSTS SHALL BE A MINIMUM SIZE OF 1 1/8" x 1 1/8" OF DRIED OAK OR HICKORY.
4. SILT FENCE TO EXTEND ABOVE THE TOP OF PIPE.
5. SILT FENCE CONSTRUCTION AND GEOTEXTILE FABRIC SHALL CONFORM TO WDNr TECHNICAL STANDARD 1056.
6. POST SPACING SHALL BE SELECTED BASED ON GEOTEXTILE FABRIC (8'-0" FOR WOVEN & 3'-0" FOR NON-WOVEN)



TRENCH DETAIL



JOINT (HOOK METHOD)



SIDE VIEW



Kwik Trip

STORES

Kwik Star

STORES

Kwik Trip, Inc.
P.O. BOX 2107
1626 OAK STREET
LACROSSE, WI 54602-2107
PH. (608) 781-8988
FAX (608) 781-8960

JSD Professional Services, Inc.
• Engineers • Surveyors • Planners
MADISON REGIONAL OFFICE
161 HORIZON DRIVE SUITE 101
VERONA, WI 53606
608.848.5060 PHONE | 608.848.2255 FAX
MADISON | MILWAUKEE | KENOSHA

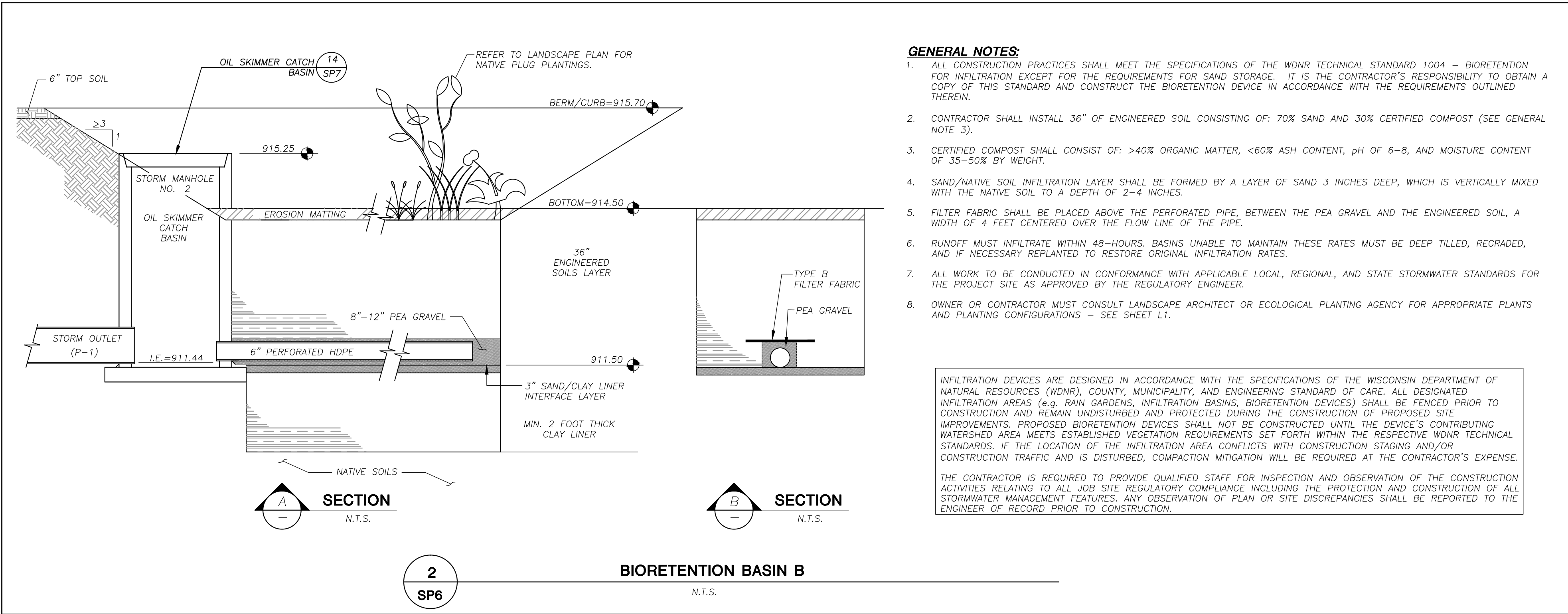
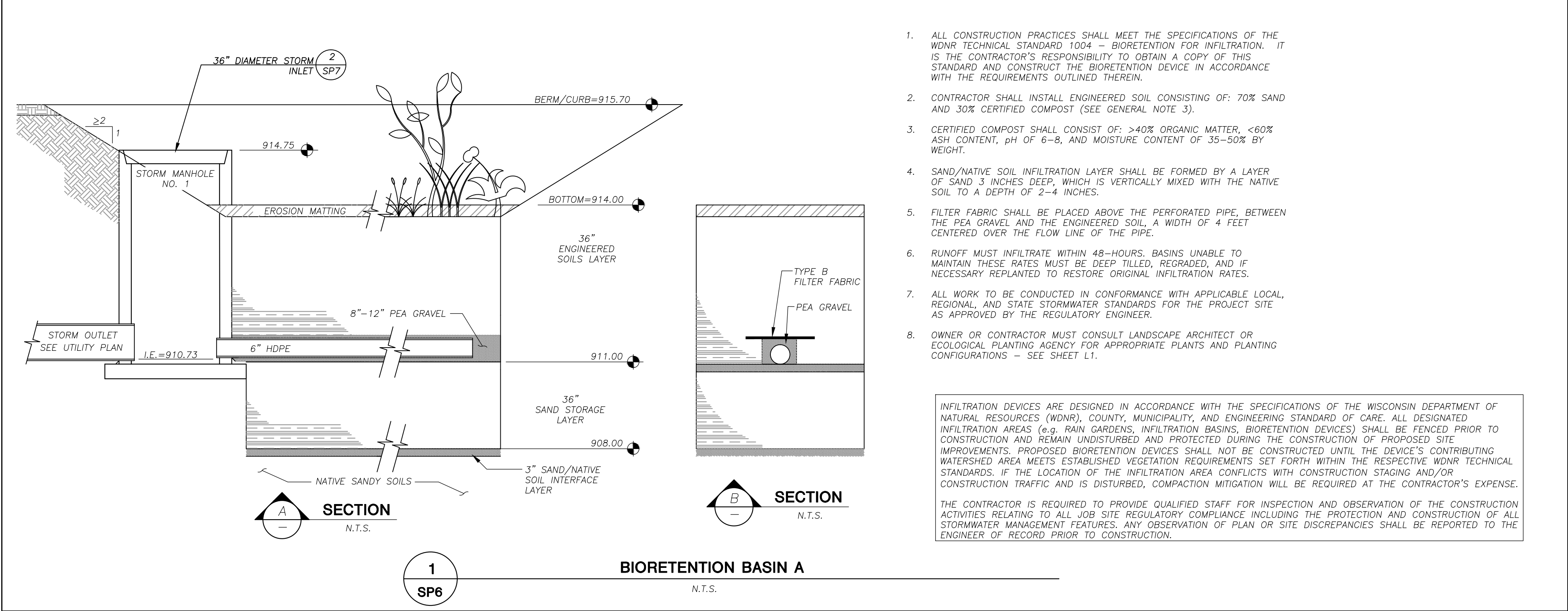
DETAILS

CONVENIENCE STORE

NO.	DATE	DESCRIPTION
1	07-11-14	SP SUBMITTAL
2	12-09-16	SP RESUBMITTAL

DRAWN BY	MSS
SCALE	1" = 20'
PROJ. NO.	16-7684
DATE	12-09-16
SHEET	SP5

File: t:\2016\167664\DWG\16-7664 CON DETAILS.dwg Layout: SP-6 DETAILS User: kyeka Plotted: Dec 23, 2016 9:34am Xref's:



CLAY LINER NOTES:

CLAY FOR POND LINER SHALL BE INORGANIC COHESIVE SOIL WITH A UNIFIED SOIL CLASSIFICATION SYMBOL OF CL OR CH MEETING THE FOLLOWING CRITERIA:

1. LIQUID LIMIT (LL): L>25 WITH NONE LESS THAN 20.
2. PLASTICITY INDEX (PI): PI>12 WITH NONE LESS THAN 10.
3. PERCENT FINER THAN #200 SIEVE: >50% (WET SIEVE).
4. PERCENT FINER THAN 1 INCH: >95%.
5. MAXIMUM PARTICLE SIZE: 2 INCH (DRY SIEVE).
6. LINER THICKNESS: 2.0 FEET MIN.
7. COMPACTION REQUIREMENT: 95% OF STANDARD PROCTOR MAXIMUM DRY DENSITY AND 90% FOR MODIFIED PROCTOR.
8. MAXIMUM HYDRAULIC CONDUCTIVITY OF COMPACT SAMPLE AT 95% OF MAXIMUM DENSITY (ASTM D-698): 1x10E-7 CM/SEC.
9. CLAY INSTALLED WET OF OPTIMUM IF USING STANDARD PROCTOR, AND 2% WET OF OPTIMUM IF USING MODIFIED PROCTOR.
10. SMOOTH DRUM COMPACTION EQUIPMENT IS NOT ALLOWED FOR CLAY COMPACTION.
11. CLAY SHALL BE PLACED IN LIFTS OF NO GREATER THAN 6" PRIOR TO COMPACTION.
12. CLAY SHALL BE DISKED OR OTHERWISE MECHANICALLY PROCESSED BEFORE COMPACTION TO BREAK UP CLODS. MAXIMUM CLOD SIZE IS 4".

KWIK TRIP

STORES

KWIK STAR

STORES

KWIK TRIP, Inc.
P.O. BOX 2107
1626 OAK STREET
LACROSSE, WI 54602-2107
PH. (608) 781-8988
FAX (608) 781-8960

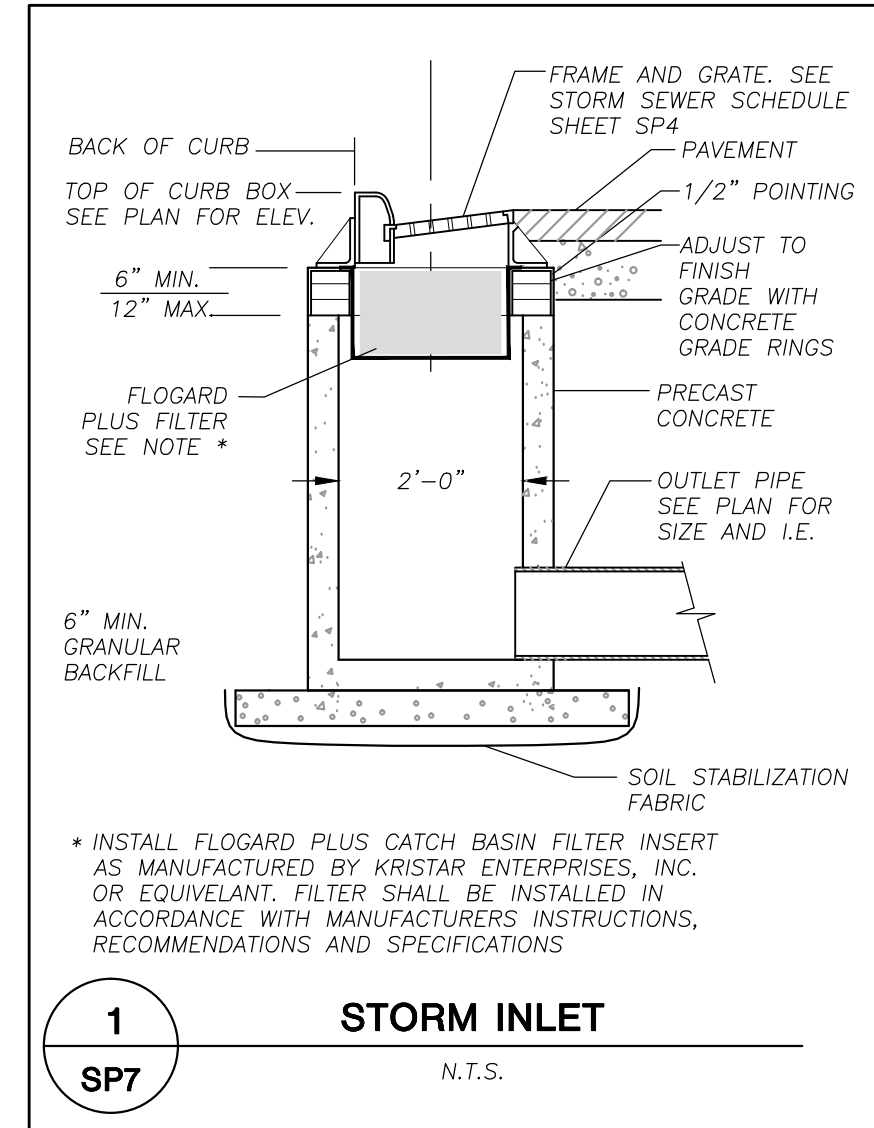
JSD Professional Services, Inc.
• Engineers • Surveyors • Planners
MADISON REGIONAL OFFICE
161 HORIZON DRIVE SUITE 101
VERONA, WI 53606
608.848.5060 PHONE | 608.848.2255 FAX
MADISON | MILWAUKEE | KENOSHA

DETAILS

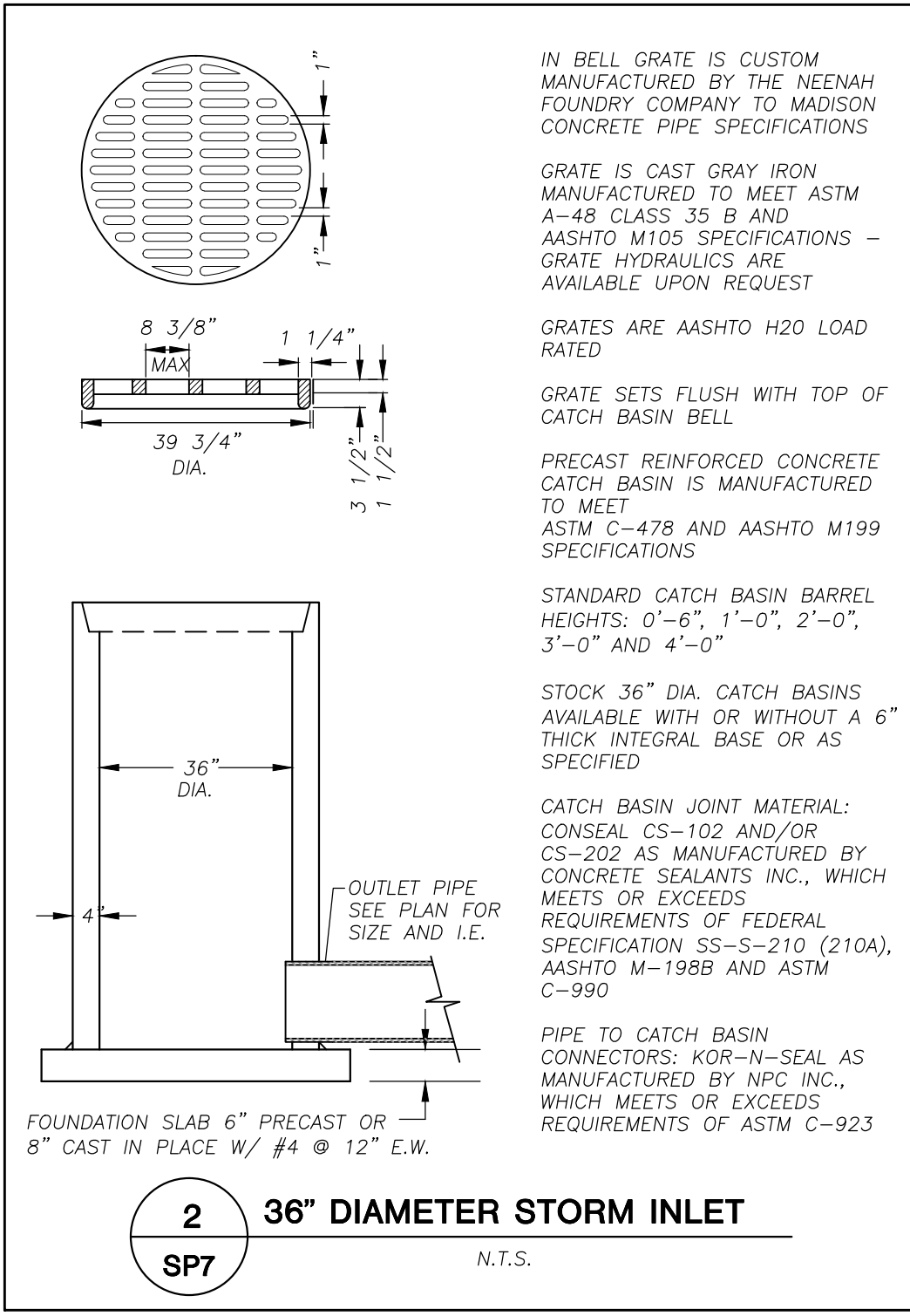
CONVENIENCE STORE

NO.	DATE	DESCRIPTION
1	07-11-14	SP SUBMITTAL
2	12-09-16	SP RESUBMITTAL

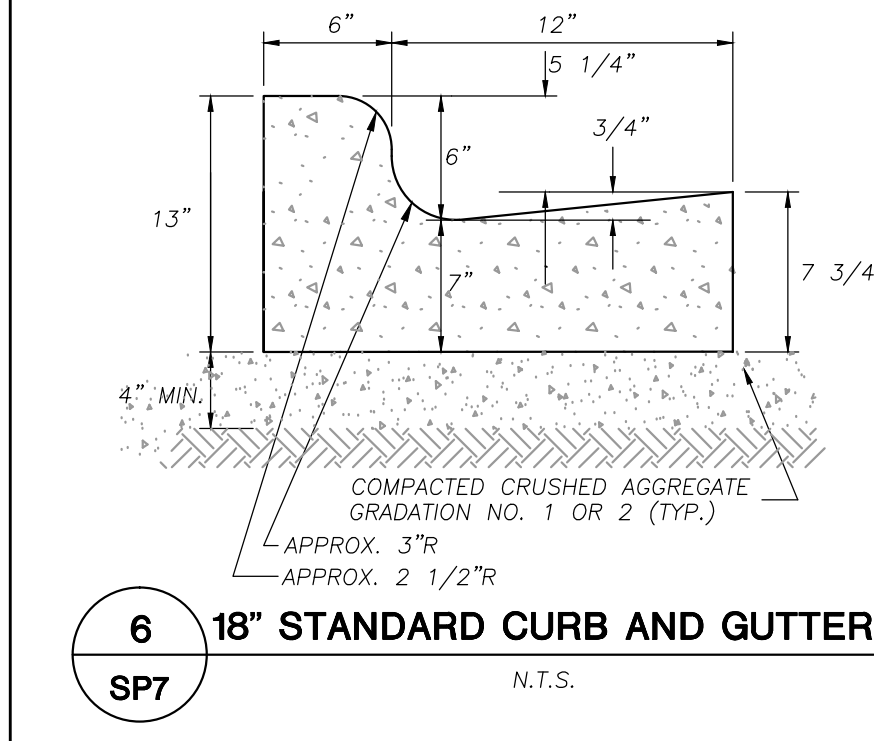
DRAWN BY	MSS
SCALE	1" = 20'
PROJ. NO.	16-7664
DATE	12-09-16
SHEET	SP6



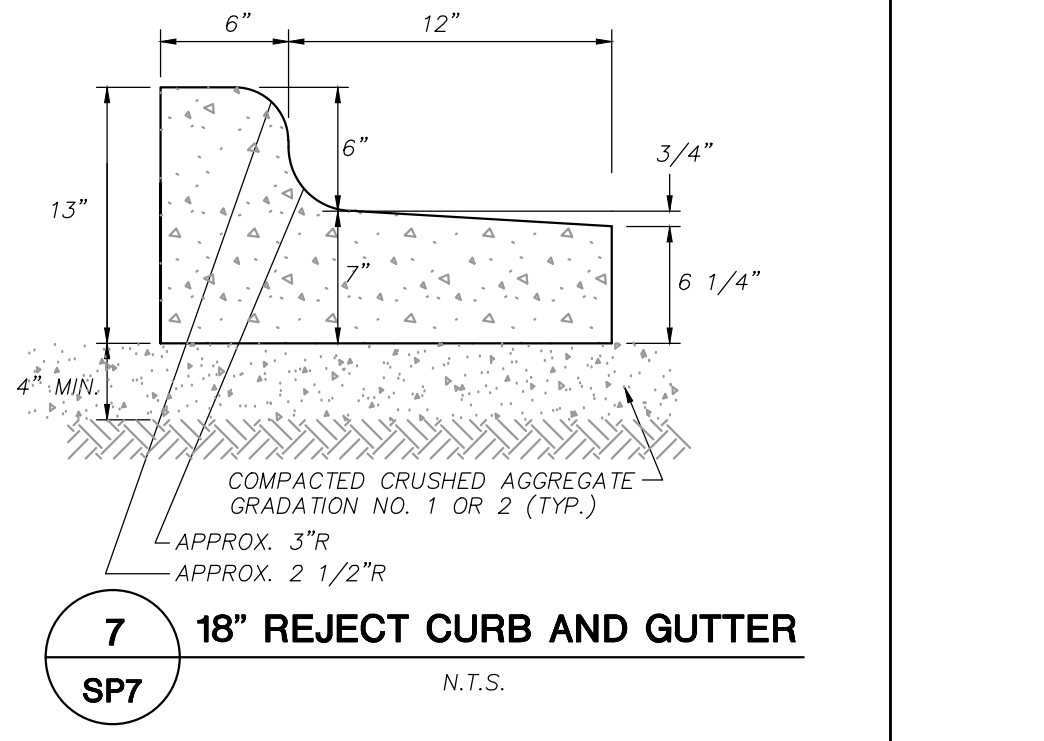
1
SP7
STORM INLET
N.T.S.



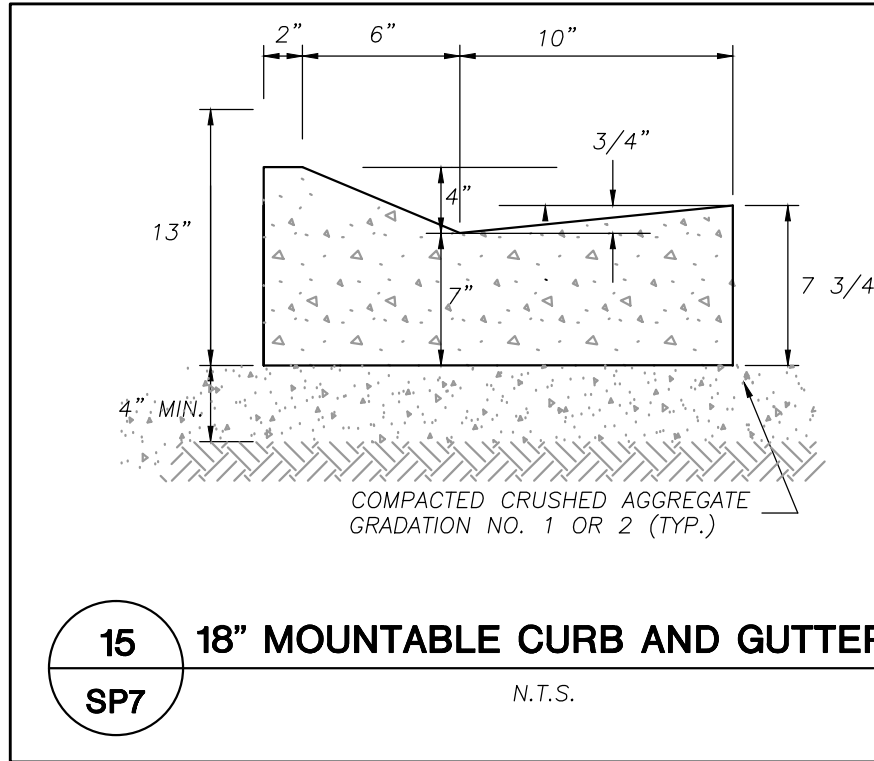
2
SP7
36" DIAMETER STORM INLET
N.T.S.



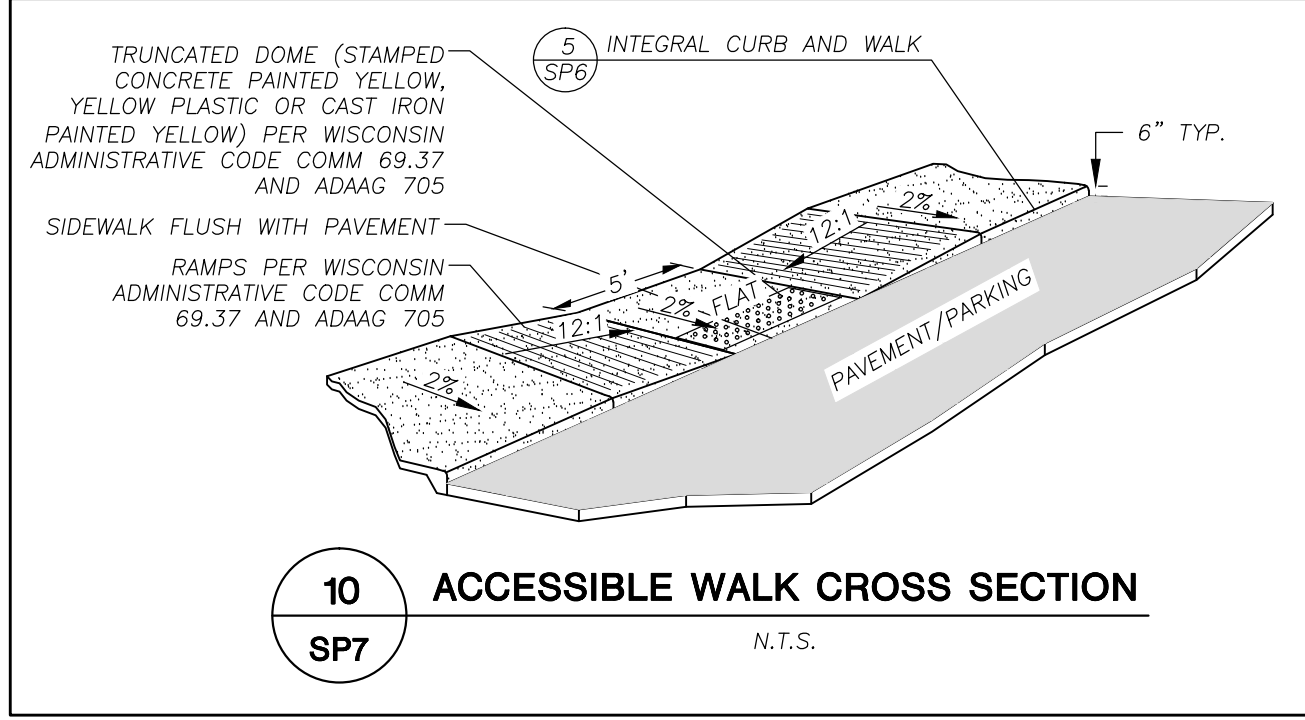
6
SP7
18" STANDARD CURB AND GUTTER
N.T.S.



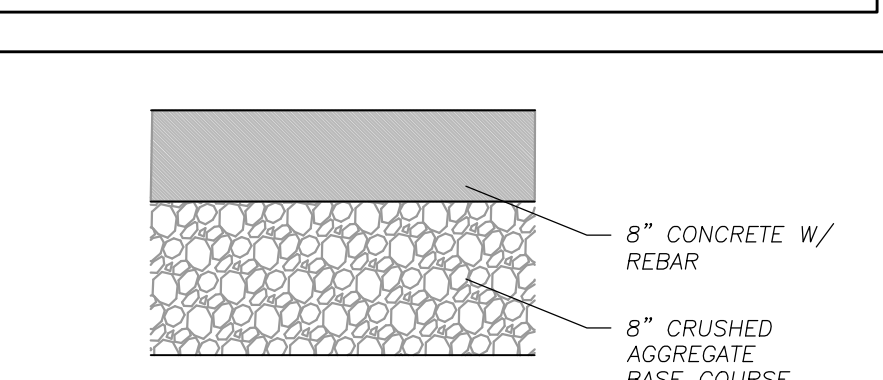
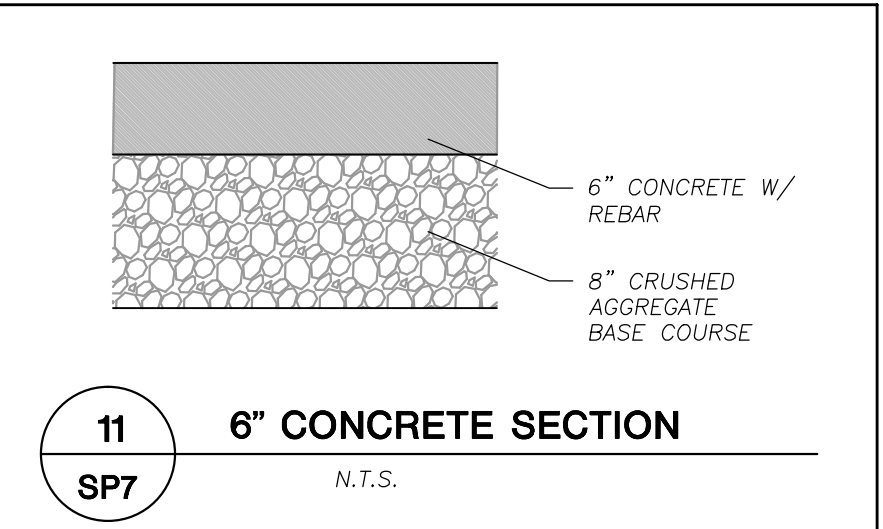
7
SP7
18" REJECT CURB AND GUTTER
N.T.S.



15
SP7
18" MOUNTABLE CURB AND GUTTER
N.T.S.

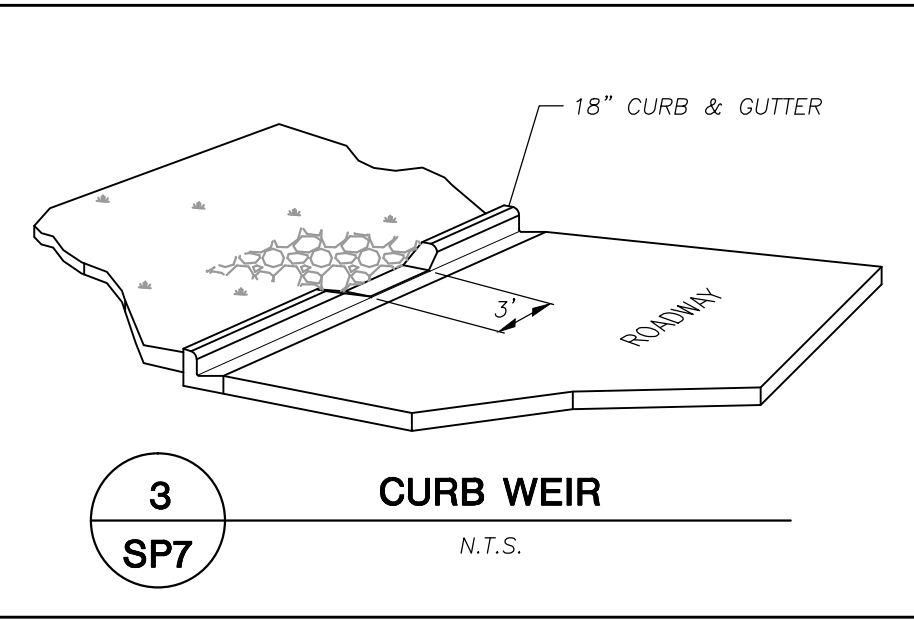


10
SP7
ACCESSIBLE WALK CROSS SECTION
N.T.S.

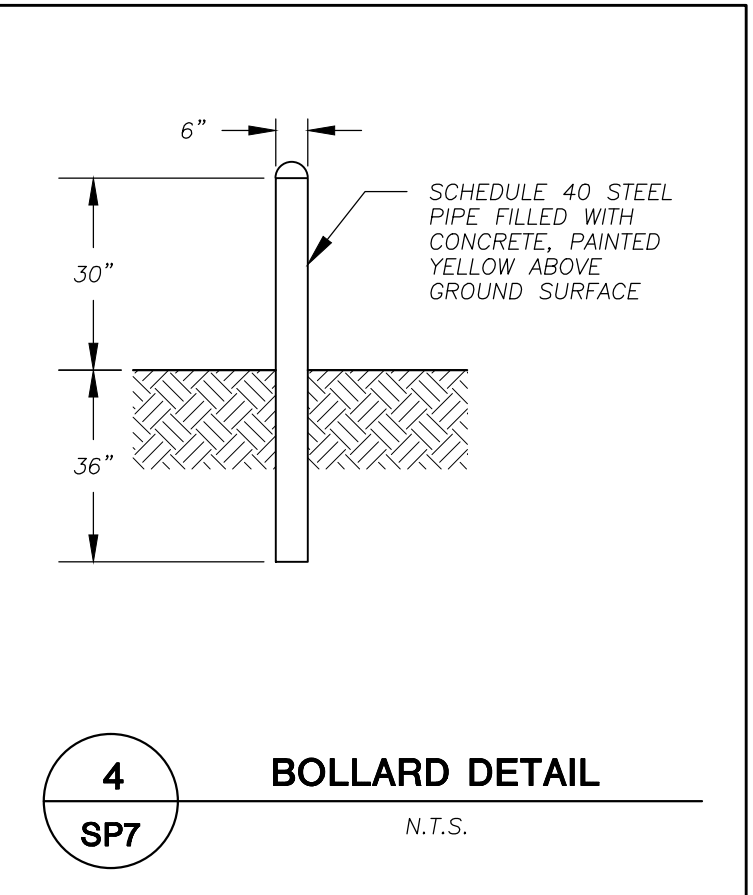


11
SP7
6" CONCRETE SECTION
N.T.S.

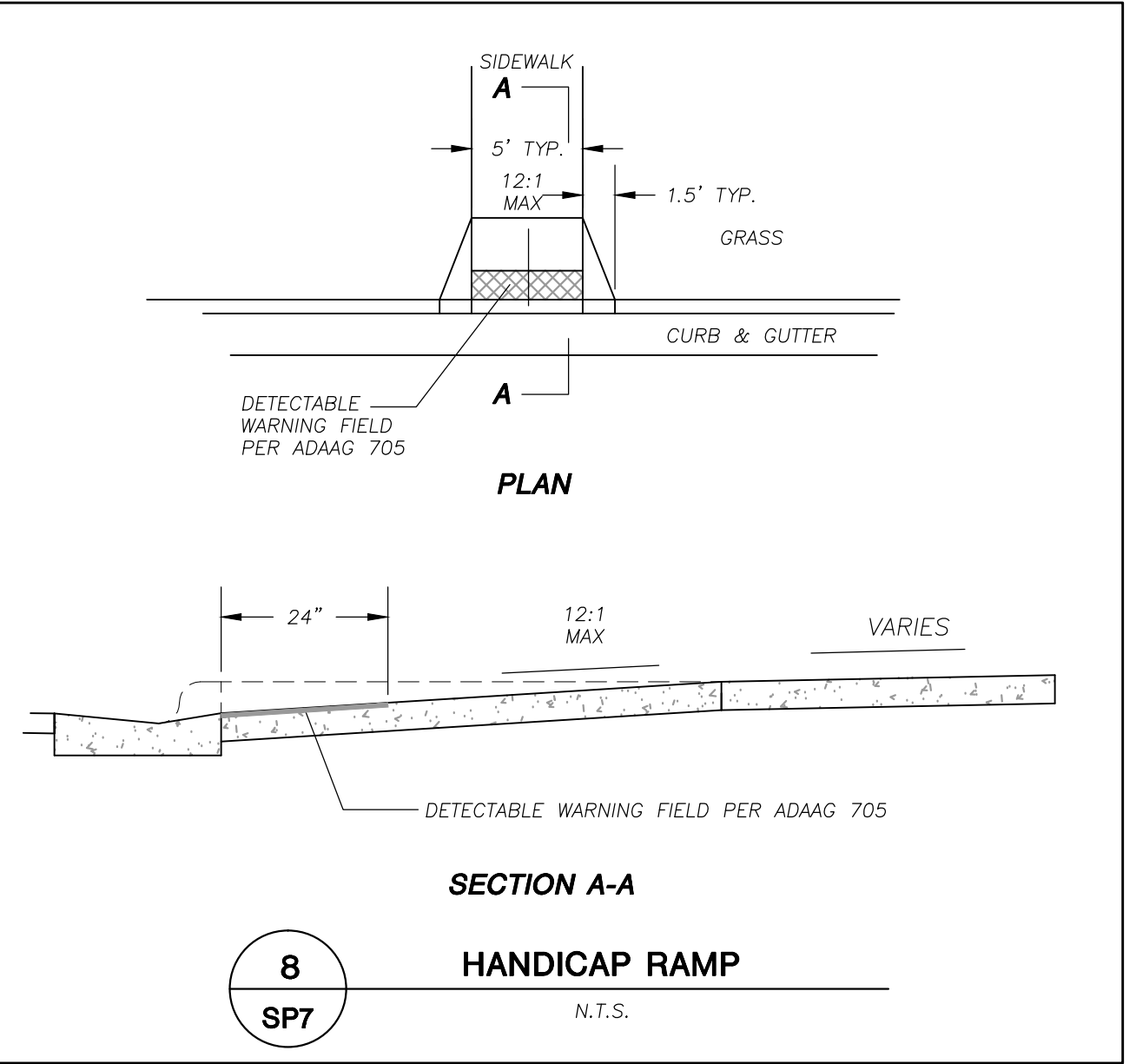
12
SP7
8" CONCRETE SECTION
N.T.S.



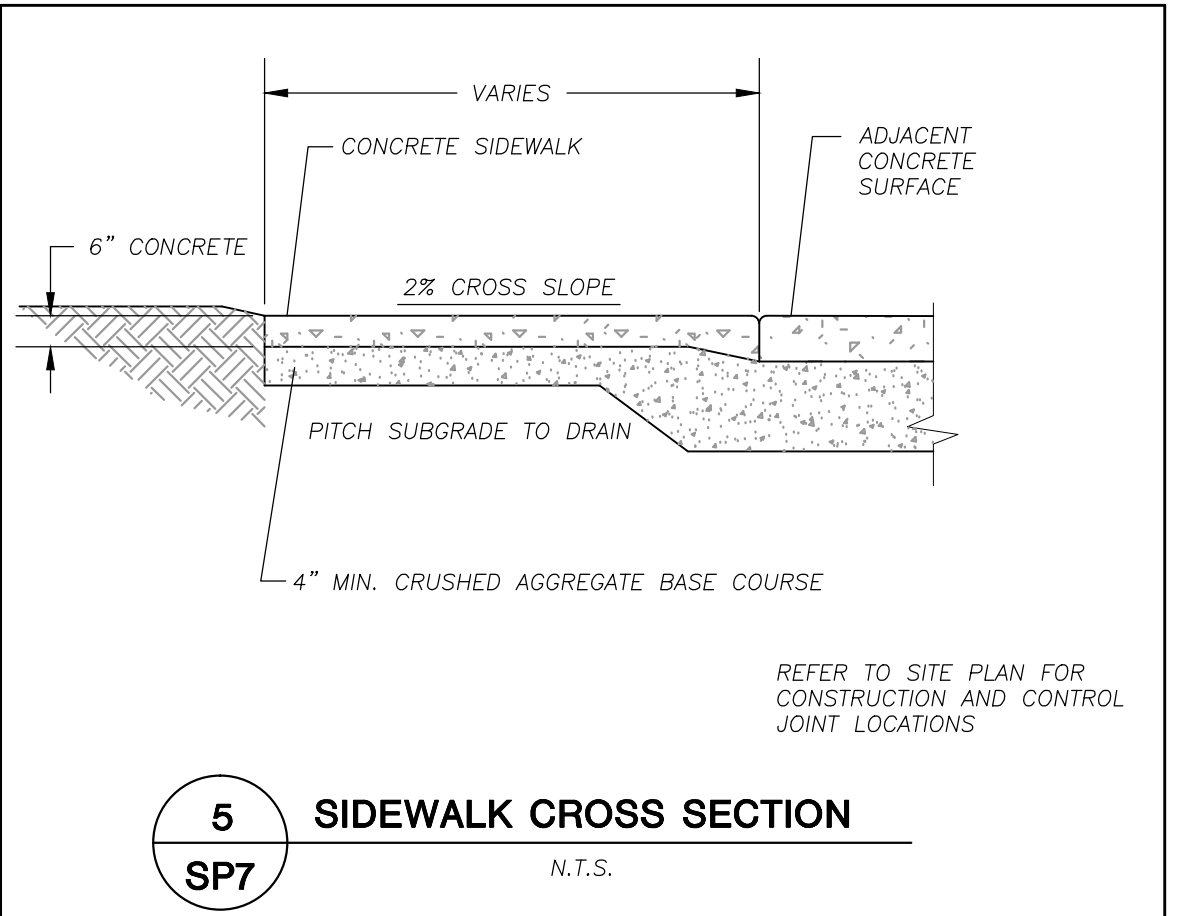
3
SP7
CURB WEIR
N.T.S.



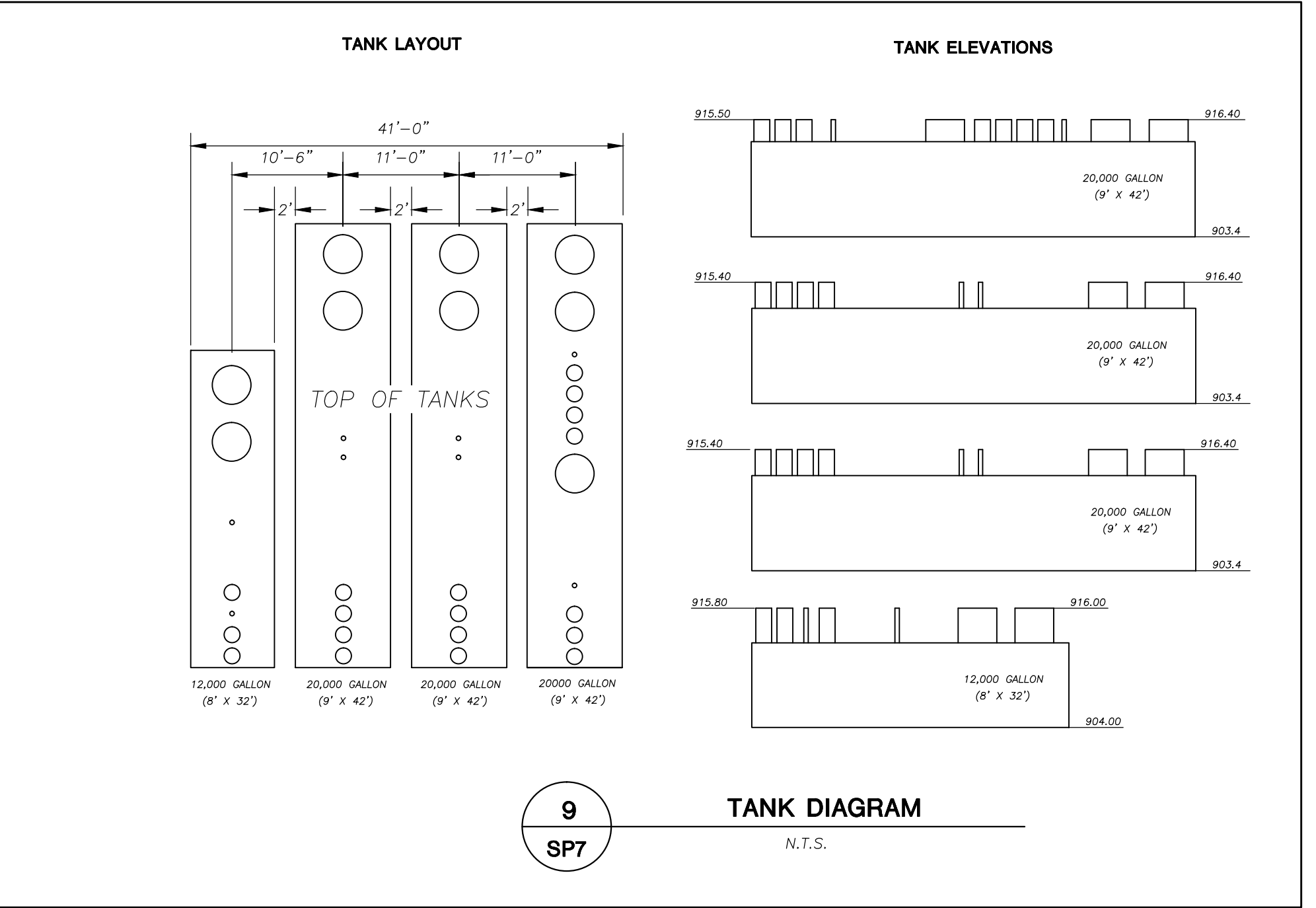
4
SP7
BOLLARD DETAIL
N.T.S.



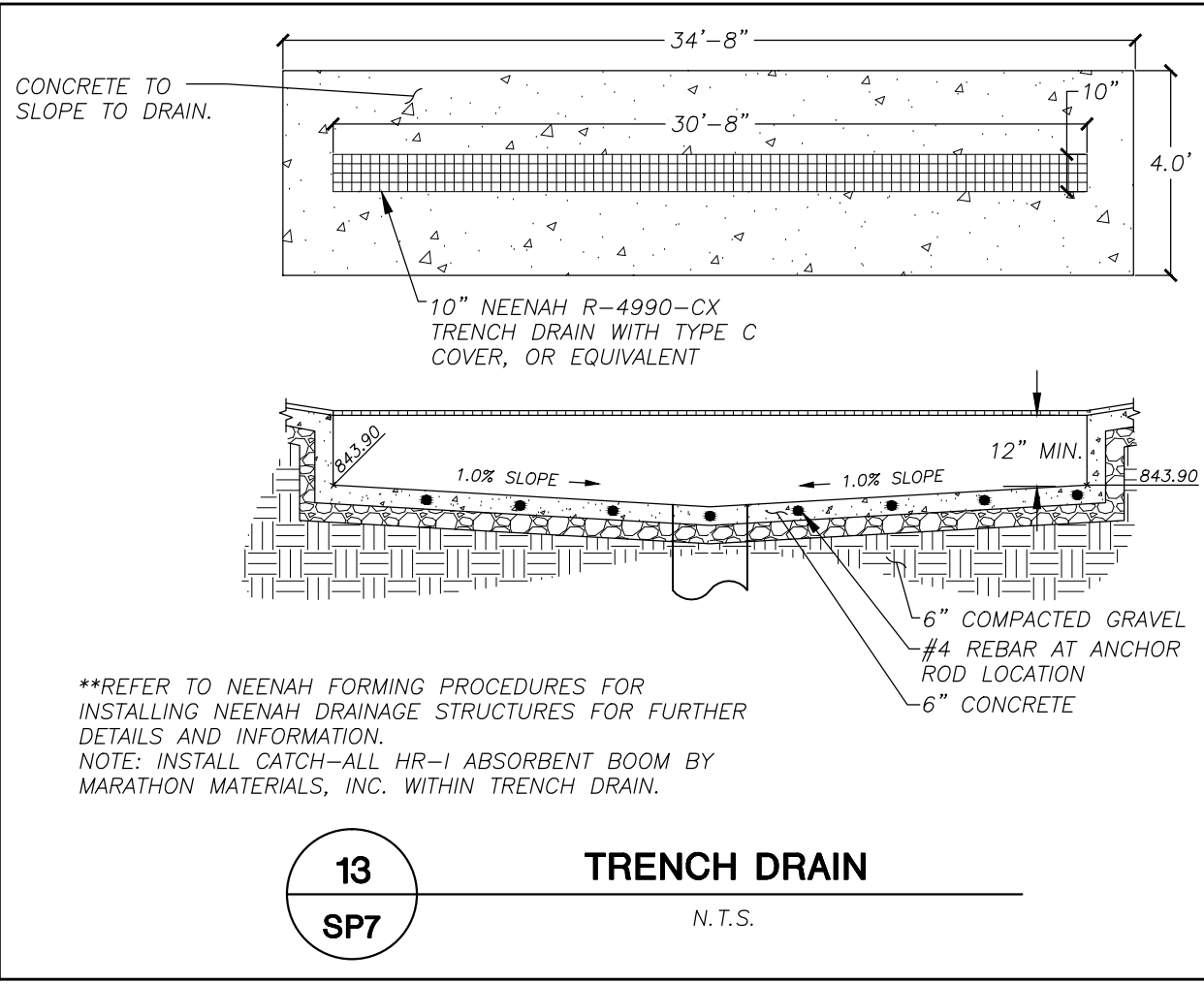
8
SP7
HANDICAP RAMP
N.T.S.



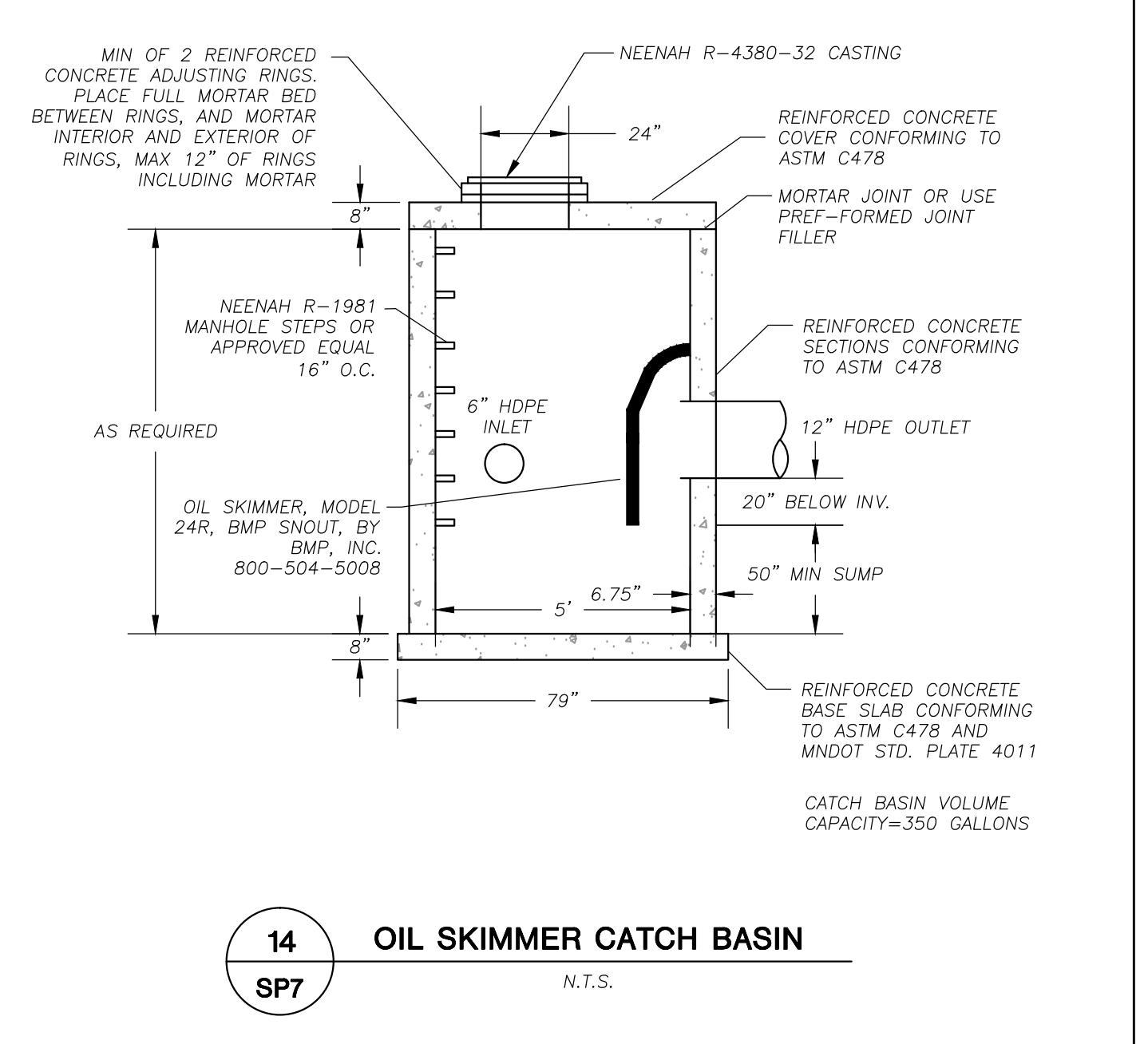
5
SP7
SIDEWALK CROSS SECTION
N.T.S.



9
SP7
TANK DIAGRAM
N.T.S.



13
SP7
TRENCH DRAIN
N.T.S.



14
SP7
OIL SKIMMER CATCH BASIN
N.T.S.



STORES



STORES

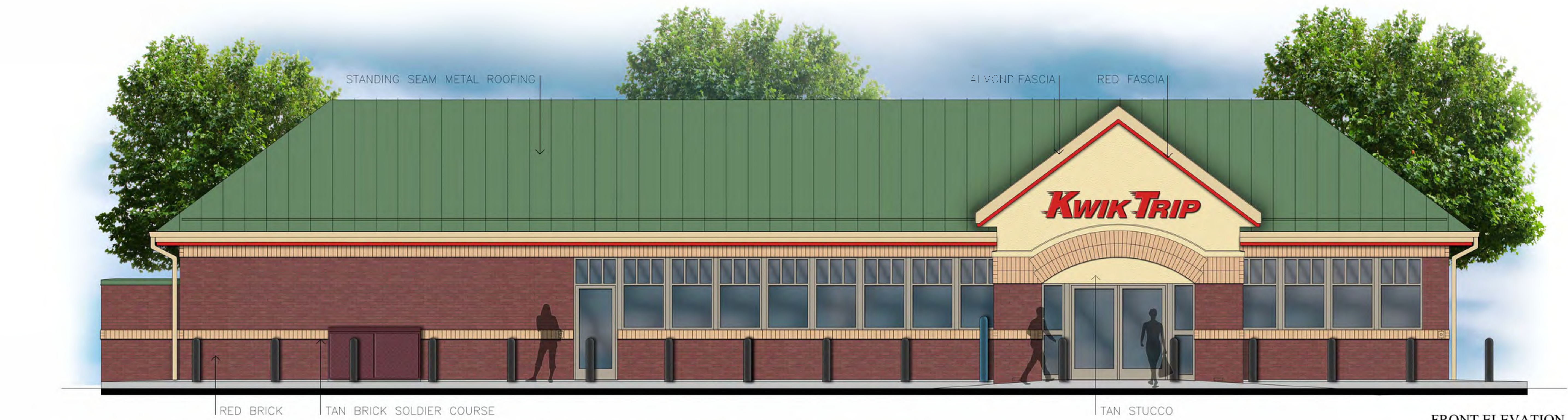
KWIK TRIP, Inc.
P.O. BOX 2107
1626 OAK STREET
LACROSSE, WI 54602-2107
PH. (608) 781-8988
FAX (608) 781-8960

JSD Professional Services, Inc.
• Engineers • Surveyors • Planners
MADISON REGIONAL OFFICE
161 HORIZON DRIVE SUITE 101
VERONA, WI 53590
608.848.5060 PHONE | 608.848.2255 FAX
MADISON | MILWAUKEE | KENOSHA

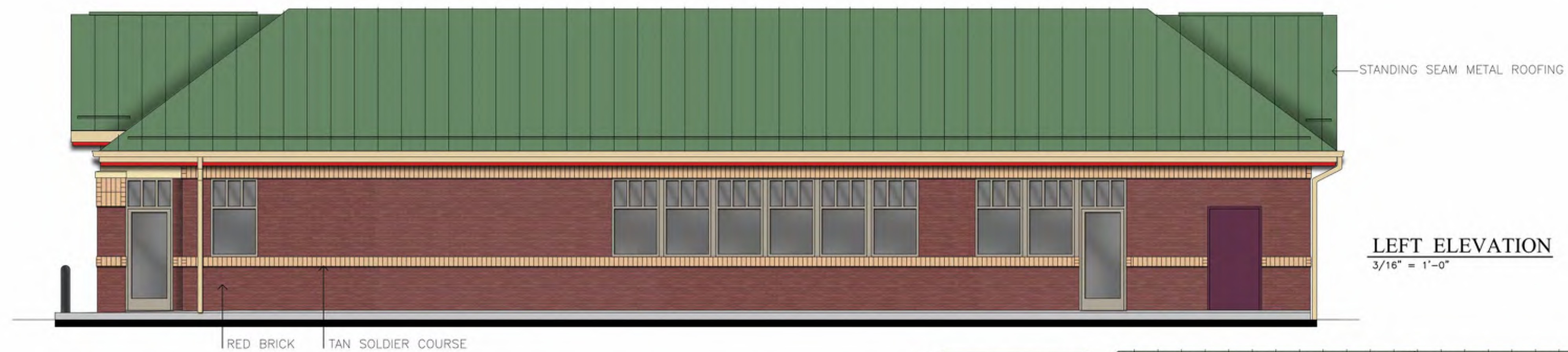
DETAILS
CONVENIENCE STORE

NO.	DATE	DESCRIPTION
1	07-11-14	SP SUBMITTAL
2	12-09-16	SP RESUBMITTAL

DRAWN BY	MSS
SCALE	1" = 20'
PROJ. NO.	16-1684
DATE	12-09-16
SHEET	SP7

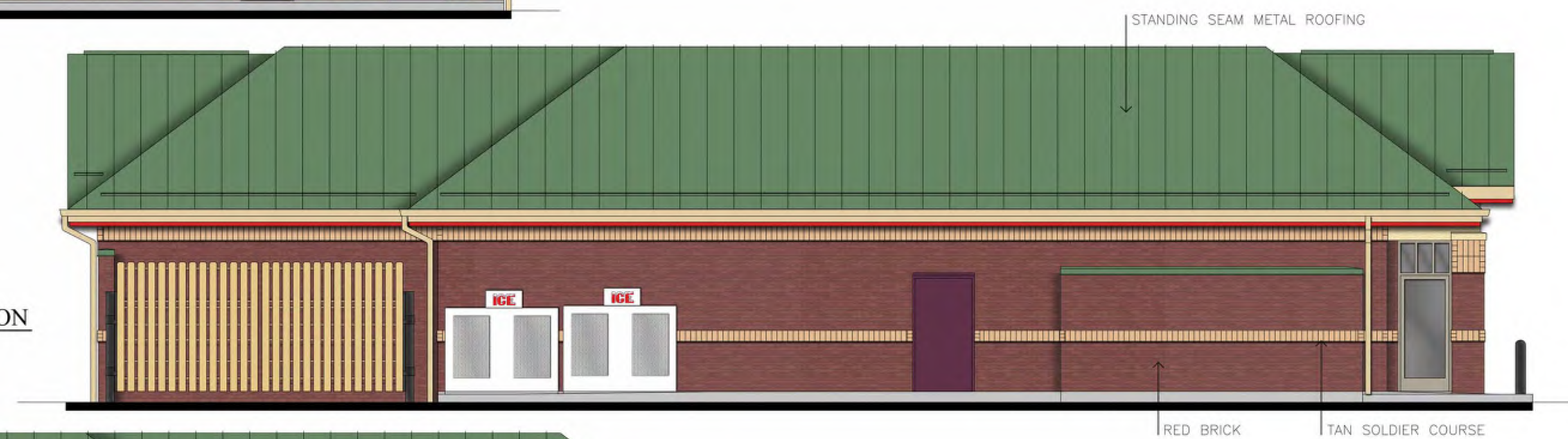


FRONT ELEVATION
1/4" = 1'-0"



LEFT ELEVATION
3/16" = 1'-0"

RIGHT ELEVATION
3/16" = 1'-0"



BACK ELEVATION
3/16" = 1'-0"



RH WICOMBO
PROTOTYPE



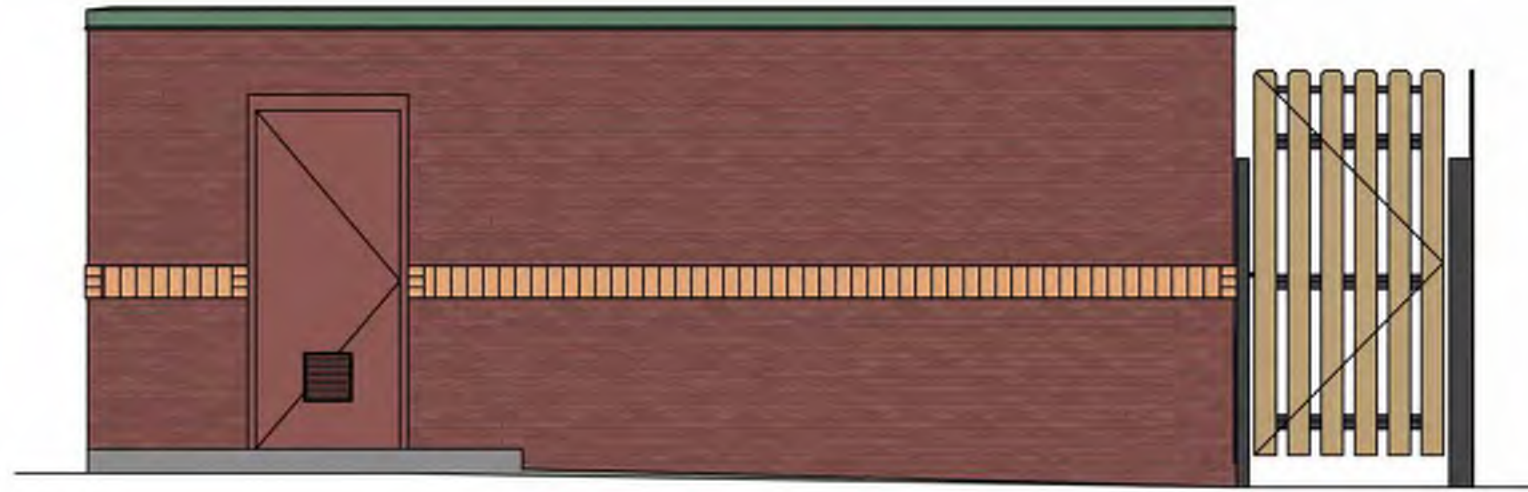
FRONT ELEVATION
3/8" = 1'-0"



SIDE ELEVATION
3/8" = 1'-0"

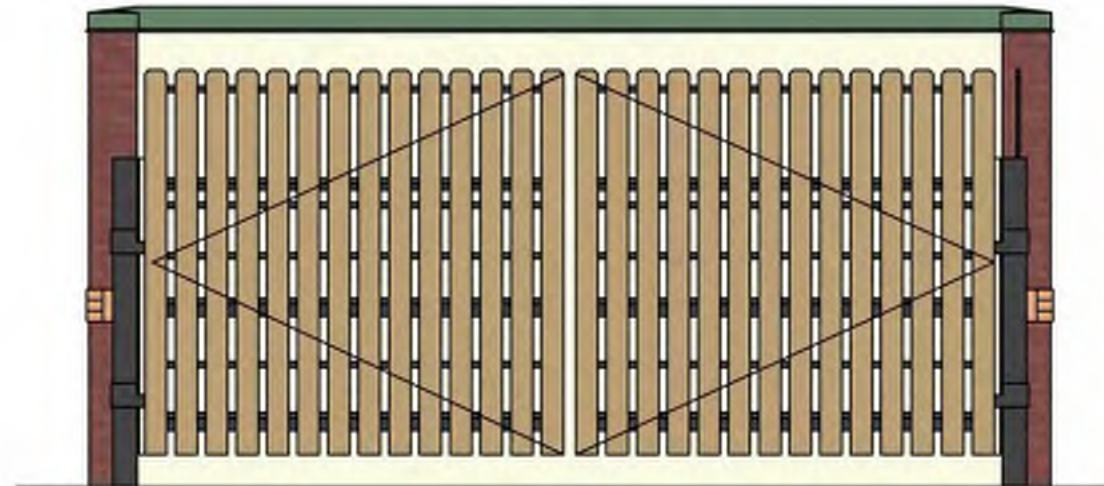
DB CW





Side Elevation

Scale: 1/4"=1'-0"

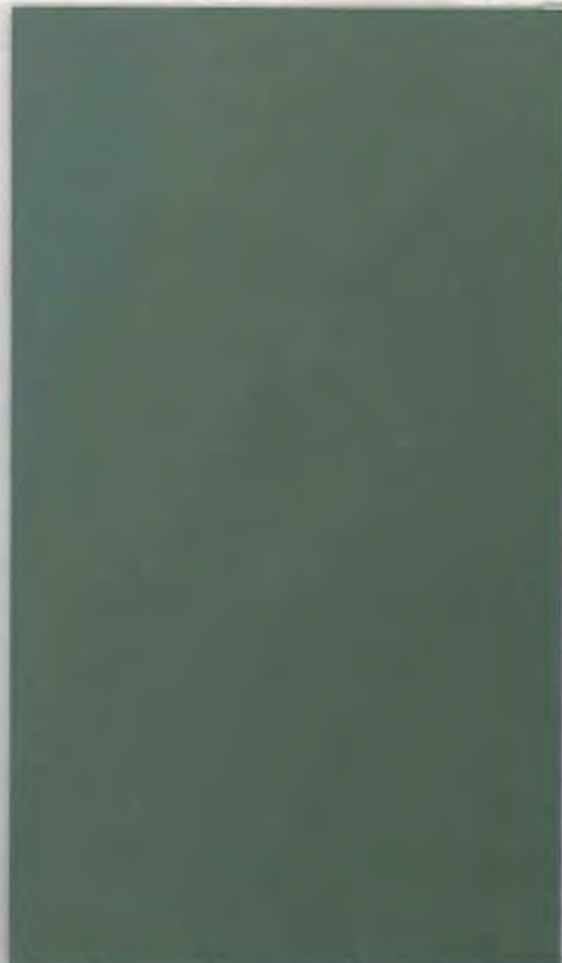


Front Elevation

Scale: 1/4"=1'-0"

DUMPSTER ENCLOSURE & STORAGE SHED





**Standing Seam
Metal Roof**



**Doors and
Windows**



Metal Fascia and Accent



Stucco



Brick



FRONT ELEVATION

TAN
STUCCO
(2) TAN BRICK
SOLDIER CRSE

TAN BRICK SOLDIER CRSE
AT WINDOWS

TAN BRICK
SOLDIER CRSE RED
TAN BRICK
ROWLOCK CRSE



Revised:
Date: JAN 24, 2011
Checked: TPL
Drawn: TPL
Project #:

KWIK TRIP STORES





KPW LOT 6 KWIK TRIP

BUILDING FACADE PHOTOS

JSD Professional Services, Inc.
• Engineers • Surveyors • Planners