

# AMERICAN RESCUE PLAN ACT

Department of Public Works

# DIGITAL WELCOME SIGNS

- **Project Description**

- Welcome signs with a digital component would be placed in strategic areas as you enter the city from County Rd 138 and Hwy 51, Hwy 51 and Hwy B, and the last one near Hwy 51 and County Highway N. The exact locations are still being considered.

- **Need**

- Currently we have no welcome signs as you enter the City of Stoughton. A well done sign creates a welcoming and aesthetically pleasing gateway to the community. The digital component of the sign will allow us to more effectively communicate with our residents and visitors about important community and public health updates.

- **Cost**

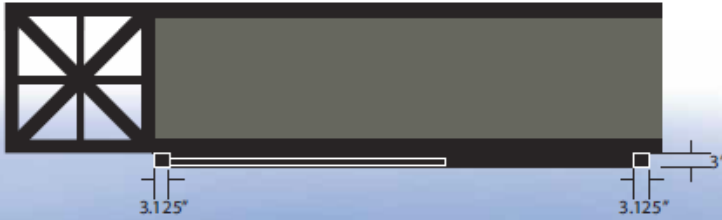
- **\$30,000 per sign x 3 = \$90,000** (This does not include any property acquisitions)



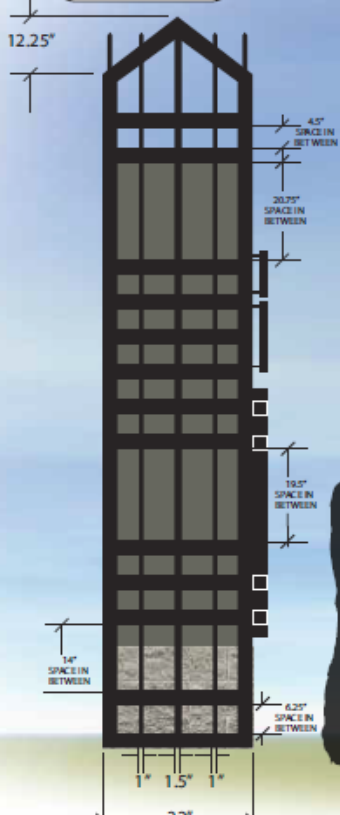
COLOR MATCH FOR TEXTURE PLUS (P-1)

CITY OF STOUGHTON OPERA HOUSE

TOP VIEW  
SCALE: 3/8" = 1"

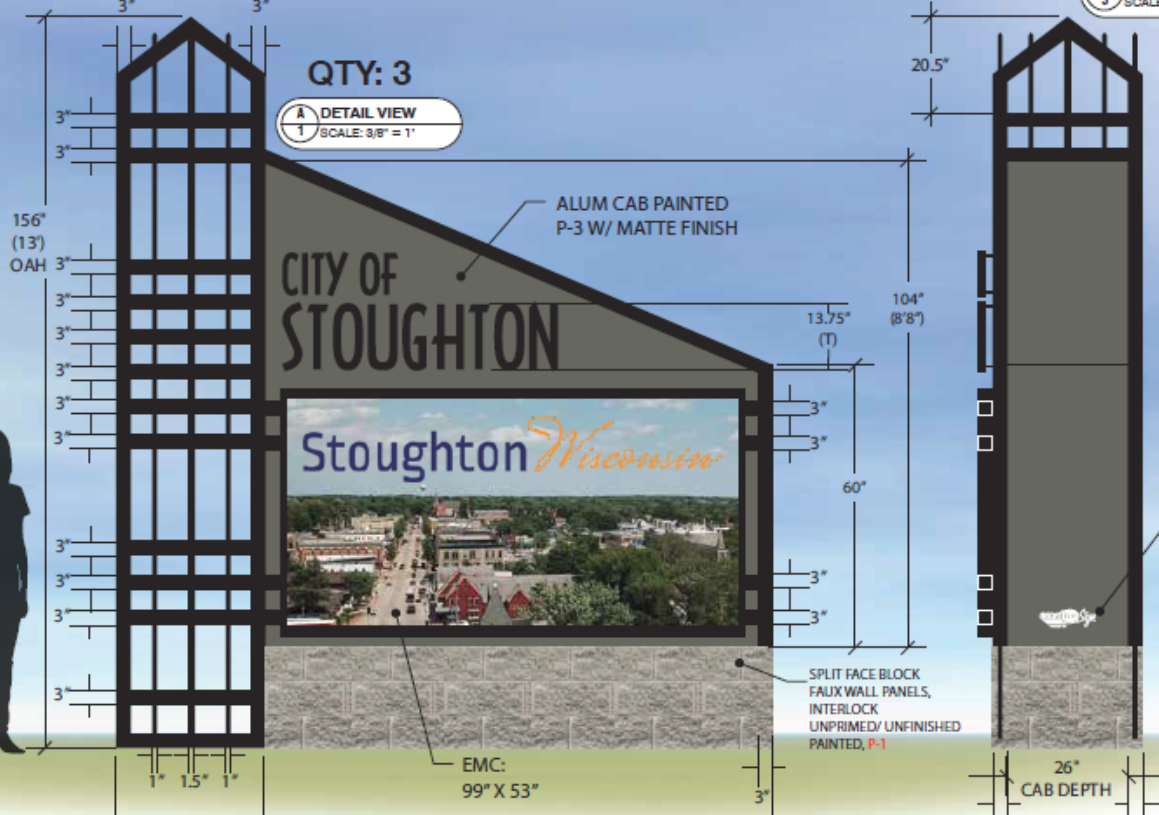


SIDE VIEW  
SCALE: 3/8" = 1"



QTY: 3

DETAIL VIEW  
SCALE: 3/8" = 1"



SIDE VIEW  
SCALE

ALUM CAB PAINTED P-3 W/ MATTE FINISH

CITY OF STOUGHTON

Stoughton Wisconsin

SPLIT FACE BLOCK FAUX WALL PANELS, INTERLOCK UNPRIMED/ UNFINISHED PAINTED, P-1

EMC: 99" X 53"

26" CAB DEPTH

QTY: 3

A  
1  
DETAIL VIEW  
SCALE: 3/8" = 1'

2" X 14.25"  
30" (2'-6")  
FLATCUT ALUM LETTERS, P-3 18" X 7"  
ALUM CAB PAINTED P-3 W/ MATTE FINISH  
5' X 10' EMC  
129" (10'-9")



111" (9'-3")  
88" (7'-4")



71" (5'-11")

ALUM CAP  
3" X 132" P-1

21" (N)  
24" (2')  
129" (10'-9")  
156" (13')

30"

DECAL: CS-WH-12

SPLIT FACE BLOCK FAUX WALL PANELS, INTERLOCK UNPRIMED/ UNFINISHED PAINTED, P-1



# FINISHED COMPOST ENCLOSURE

- Project Description
  - Construct a 40'x 48' steel and fabric enclosure at the City's Yard Waste and Composting Facility to house finished compost material.
- Need
  - Annually, we produce roughly 450 yards of finished compost per year. We must store roughly 225 yards at our facility to be used for City functions and to make available for use by our residents. We have been running into issues with the compost being too wet when we want to use the material because it is exposed to the elements. Keeping it covered would keep it dry and usable at any time.
- Cost
  - \$45,000

NOT FOR CONSTRUCTION

