

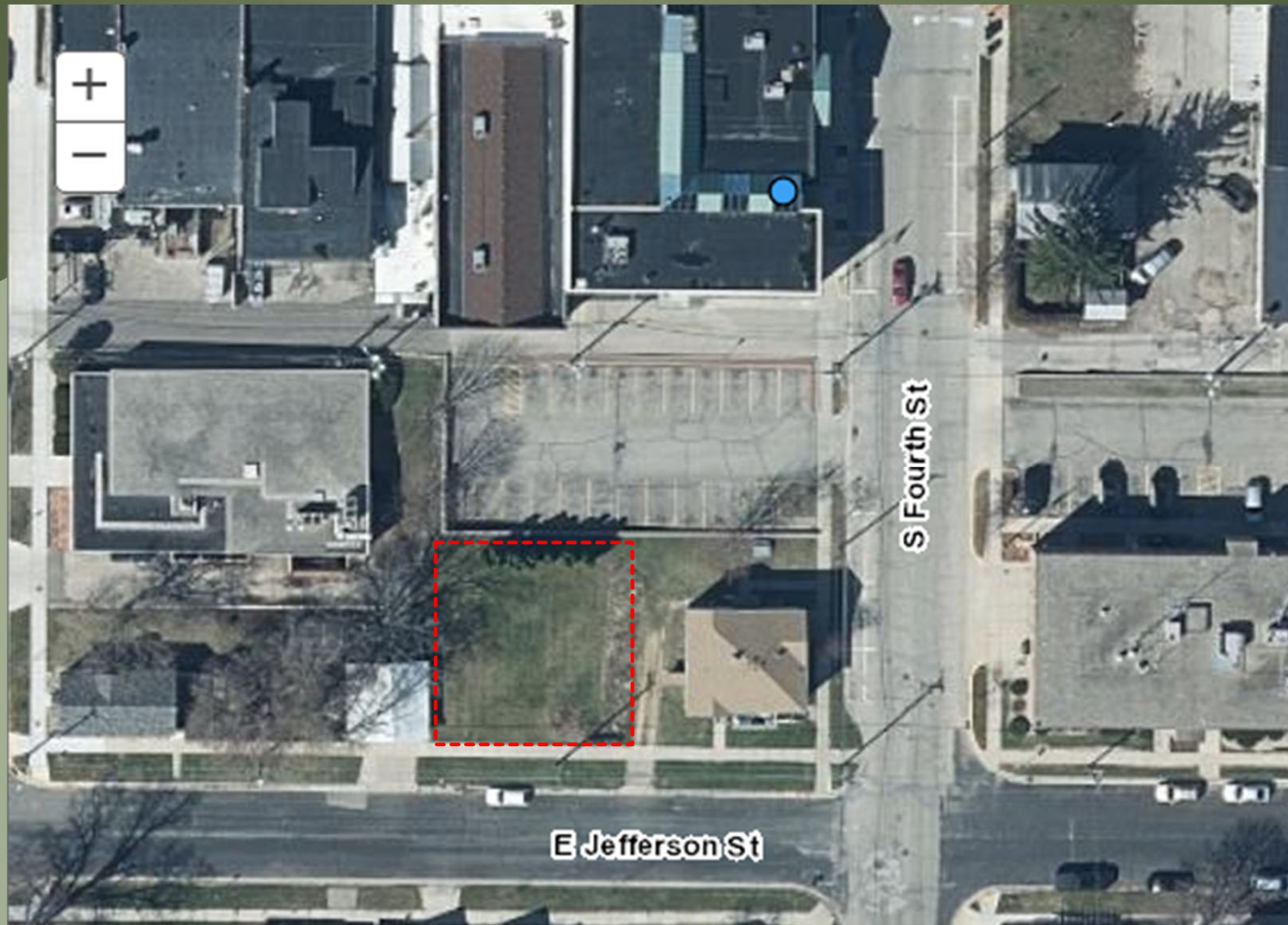


Outdoor Library Programming Space

PROPOSAL FOR ARPA FUNDING

STOUGHTON CITY COUNCIL – JULY 12, 2022

216 E. JEFFERSON ST



216 E JEFFERSON



216 E JEFFERSON ST

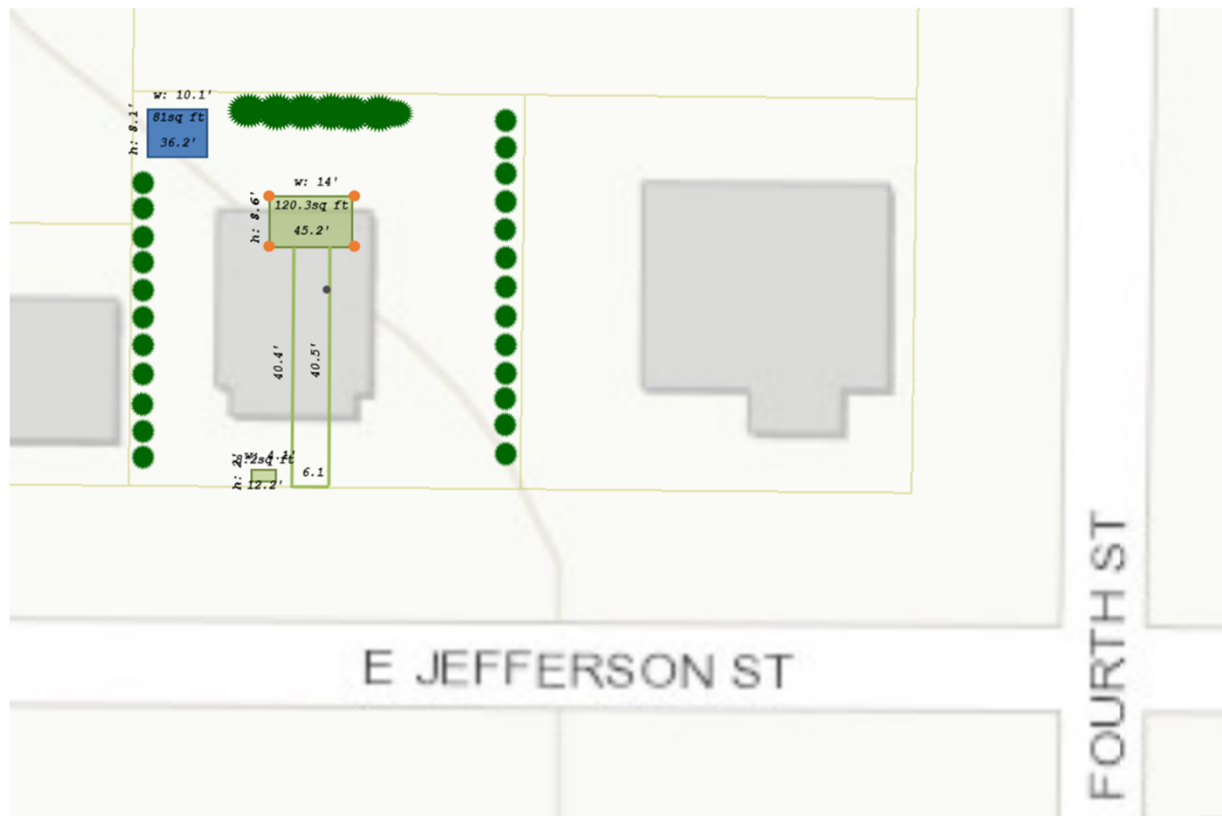
- ▶ Acquired in 2012 by the City acting through the Library Board
- ▶ Existing structure demolished fall 2012 with grant from WHEDA Strategic Blight Elimination Program
- ▶ Site of possible library expansion, long-term

216 E JEFFERSON ST

- ▶ “In the time between the demolition of the house at 216 E. Jefferson and any future expansion of the Library, the City of Stoughton and the Stoughton Public Library plan to develop this site as a neighborhood green park-like area with grass, small bushes, and flowers.”

--WHEDA grant
application, 2012

PLANNED IMPROVEMENTS



PLANNED IMPROVEMENTS

Item	Cost	Explanation
Trash receptacles	\$ 1,000.00	estimate from Public Works. Includes concrete pad
Shade structure	\$ 7,700.00	estimate from Parks based on structures at Nordic Ridge.
Storage shed	\$ 2,000.00	estimate from Parks. 8'X10' Sheds constructed by Madison College: https://madisoncollege.edu/about/community/services/sheds-and-tiny-homes
Grade and fill for shed	\$ 1,000.00	estimate from PW
(4) Adirondack chairs at \$150 each	\$ 600.00	estimate from PW
Shrubs and landscaping	\$ 3,000.00	Est. in consult with Mike V. Scouts plan to do the planting, shrubs along east & west property lines, arbor at entrance?
ADA compliant path & pad - concrete at \$7/sq. yd. ~140 sq.yds	\$ 1,000.00	estimate of \$7.00/ sq. yard provided by Dan. Based on 6' X 50' walkway and 10' X 10' concrete pad = 400 sq. ft = 133 sq. yards
Outdoor Wireless Access Point - Cabling & mounting	\$ 1,000.00	Some or all covered by ARPA funds via South Central Library System
Outdoor Wireless Access Point - Equipment	\$ 2,750.00	Library's Erate discount is 50%, which would bring cost to \$1,375
Electrical service - 200 AMP Stoughton Utilities meter hook-up	\$ 1,950.00	quote for new service hook-up from Stoughton Utilities, per Sean Grady
Electrical service - 200 AMP - No Shorts proposal	\$ 3,000.00	quote from No Shorts Electrical for new 200 AMP service with outdoor panel and receptacles.
20% contingency per conversations with City Planning	\$ 5,000.00	accounts for inflation and unforeseen cost increases.
	\$ 30,000.00	

SHADE STRUCTURE



STORAGE SHED



SHRUBS



Eagle Scout project in consultation with City Forester

OUTDOOR WIRELESS ACCESS POINT



Funded all or in part by ARPA funds (via DPI & South Central Library System) and Federal E-rate rebate program.

FUTURE DEVELOPMENT?

- ▶ Long-term plan for site may include expansion of library building/parking but many contingencies remain
- ▶ Structures could be moved and reused in another location

QUESTIONS?

