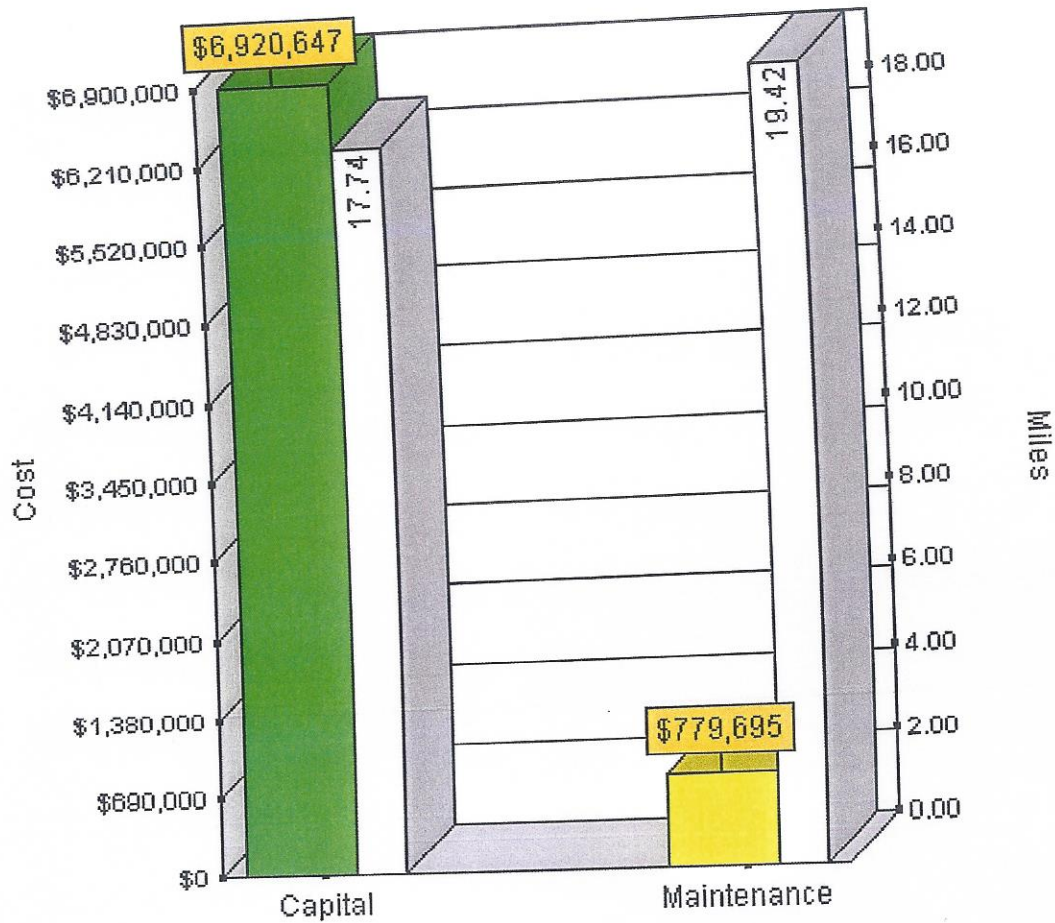


# Rudimentary Needs Analysis

## City of Stoughton

Generated on 07/15/2015 01:14:07 PM



- 0.00% of needs attributed to this year's data
- 0.00% of needs attributed to one year old data
- 99.67% of needs attributed to two year old data
- 0.33% of needs are potentially unreliable - Rating Data > 2 years old
- 0.00% of needs are estimated - No Data
- 0.00% of needs are estimated - Data Too Old (> 5 years old)

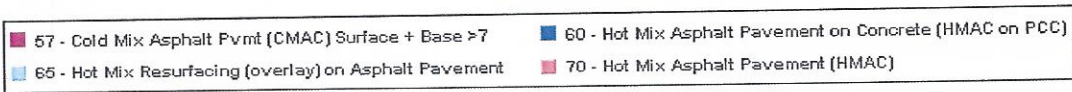
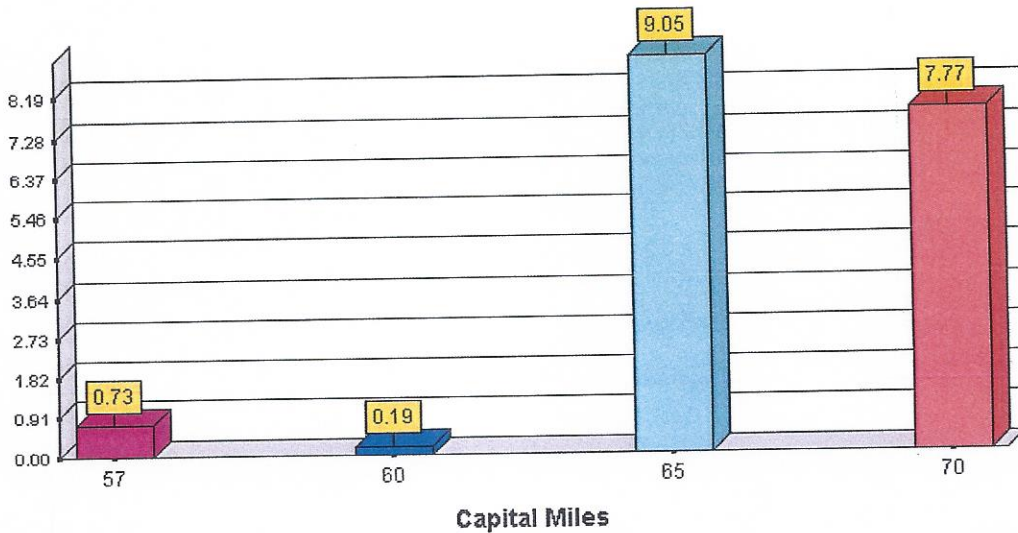
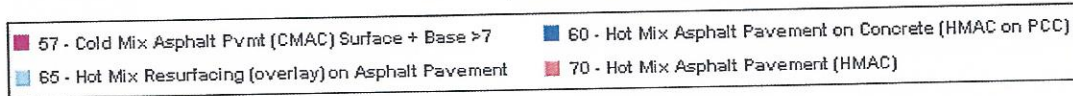
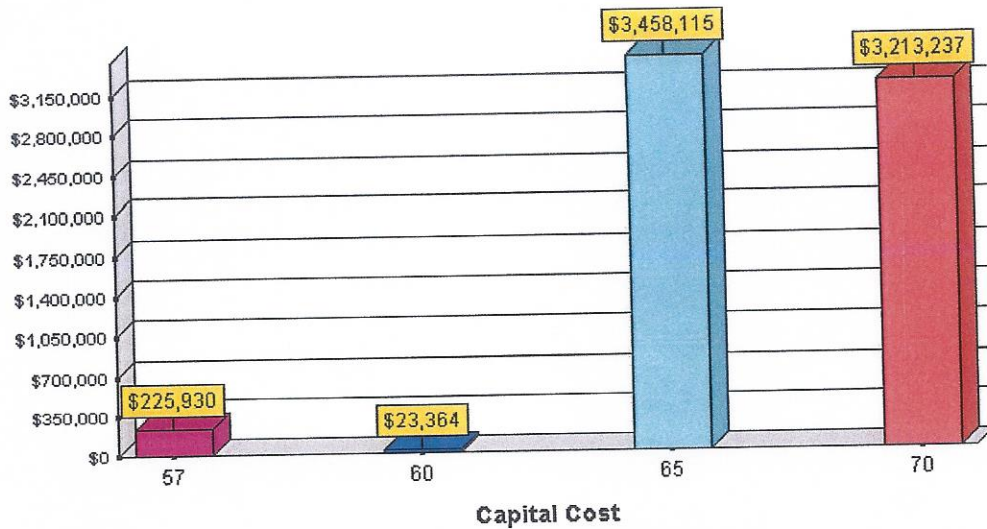
*\*\*The information shown is based on actual data. Pavement sections without actual rating data were not included in this analysis.*

*There are 56.28 miles of rated roadways and 0.45 miles of unrated roadways. Please note that mileage listed with the graph shown above is the portion of the rated roadway miles indicating need (designated as capital or maintenance).*

# Rudimentary Needs Analysis Sorted by Pavement Type

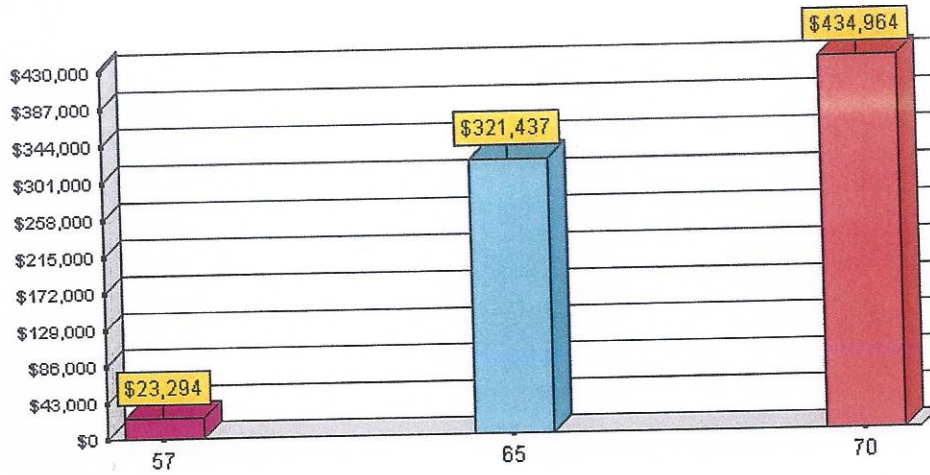
## City of Stoughton

Generated on 07/15/2015 01:19:01 PM



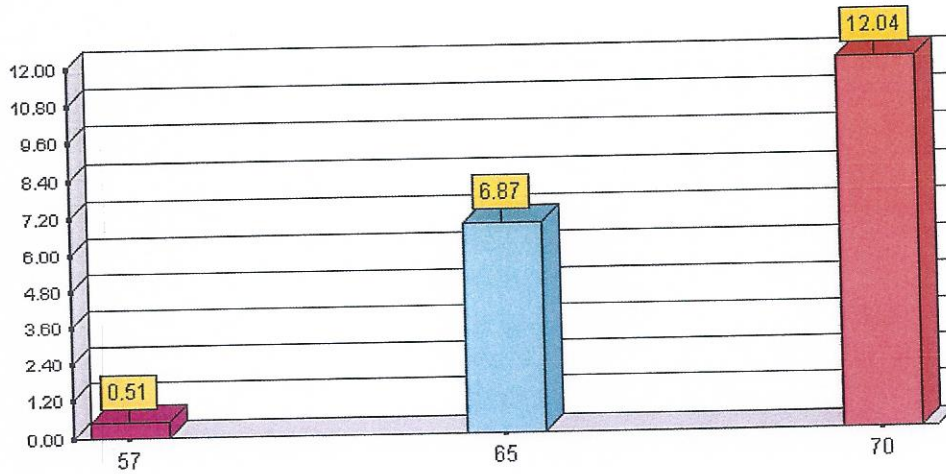
*\*\*The information shown is based on actual data. Pavement sections without actual rating data were not included in this analysis.*

*There are 56.28 miles of rated roadways and 0.45 miles of unrated roadways. Please note that mileage listed with the graph shown above is the portion of the rated roadway miles indicating need (designated as capital or maintenance).*



**Maintenance Cost**

- 57 - Cold Mix Asphalt Pvrnt (CMAC) Surface + Base >7
- 65 - Hot Mix Resurfacing (overlay) on Asphalt Pavement
- 70 - Hot Mix Asphalt Pavement (HMAC)



**Maintenance Miles**

- 57 - Cold Mix Asphalt Pvrnt (CMAC) Surface + Base >7
- 65 - Hot Mix Resurfacing (overlay) on Asphalt Pavement
- 70 - Hot Mix Asphalt Pavement (HMAC)

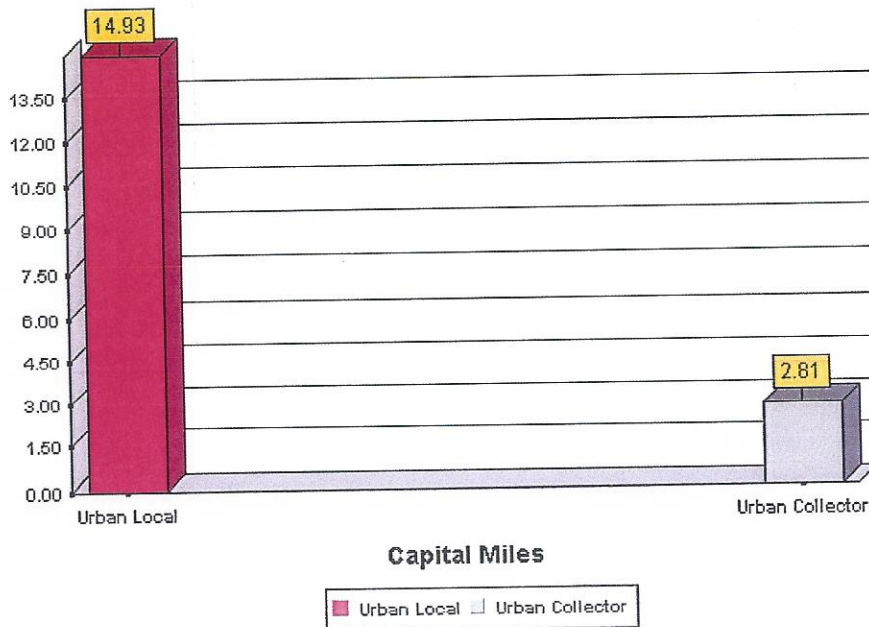
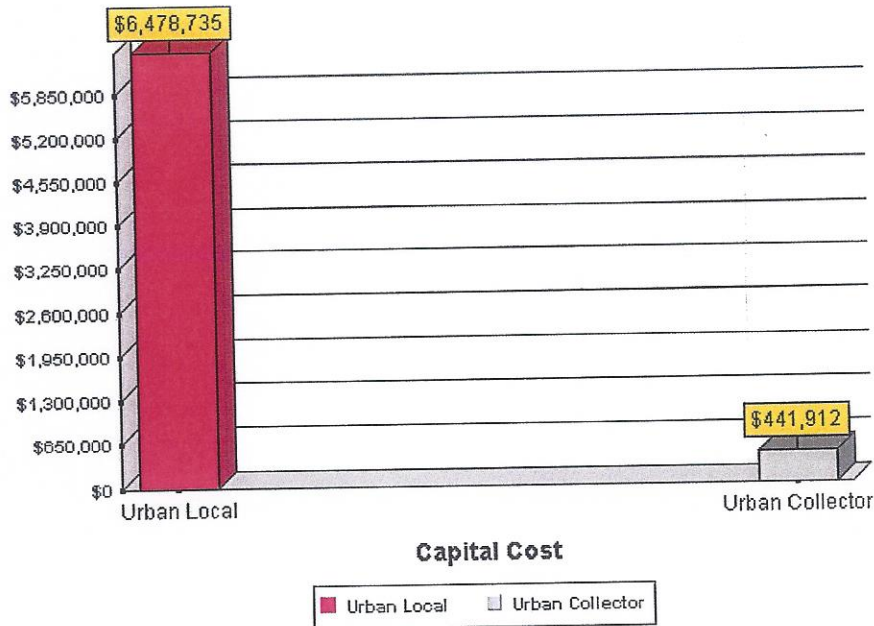
*\*\*The information shown is based on actual data. Pavement sections without actual rating data were not included in this analysis.*

*There are 56.28 miles of rated roadways and 0.45 miles of unrated roadways. Please note that mileage listed with the graph shown above is the portion of the rated roadway miles indicating need (designated as capital or maintenance).*

# Rudimentary Needs Analysis Sorted by Functional Class

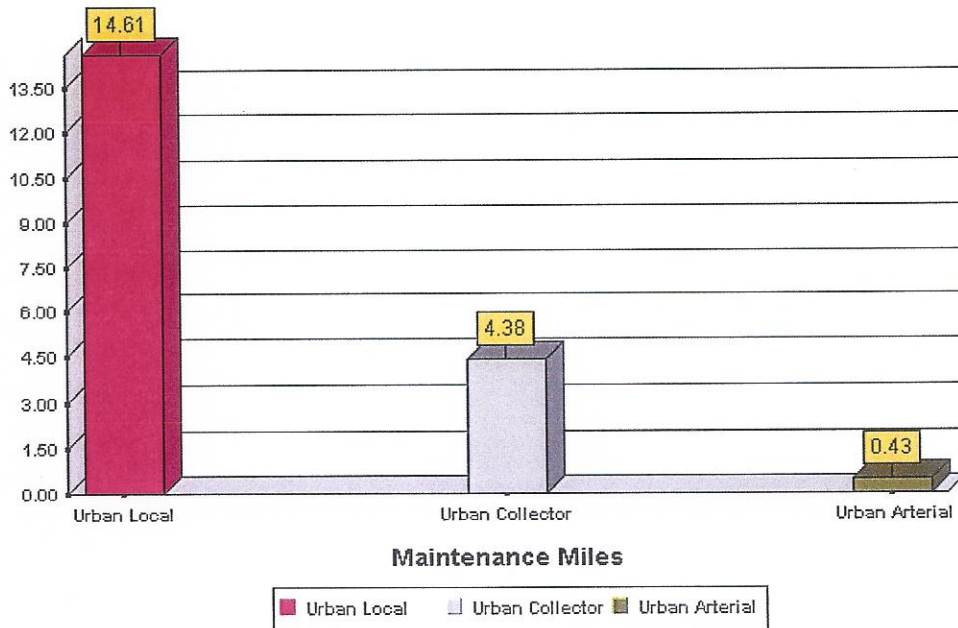
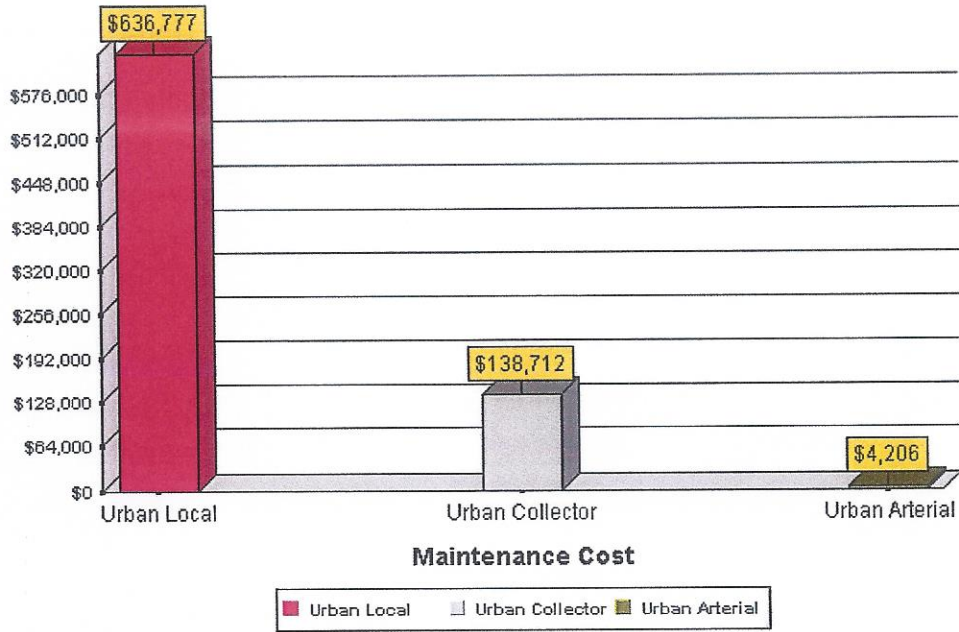
## City of Stoughton

Generated on 07/15/2015 01:19:55 PM



*\*\*The information shown is based on actual data. Pavement sections without actual rating data were not included in this analysis.*

*There are 56.28 miles of rated roadways and 0.45 miles of unrated roadways. Please note that mileage listed with the graph shown above is the portion of the rated roadway miles indicating need (designated as capital or maintenance).*

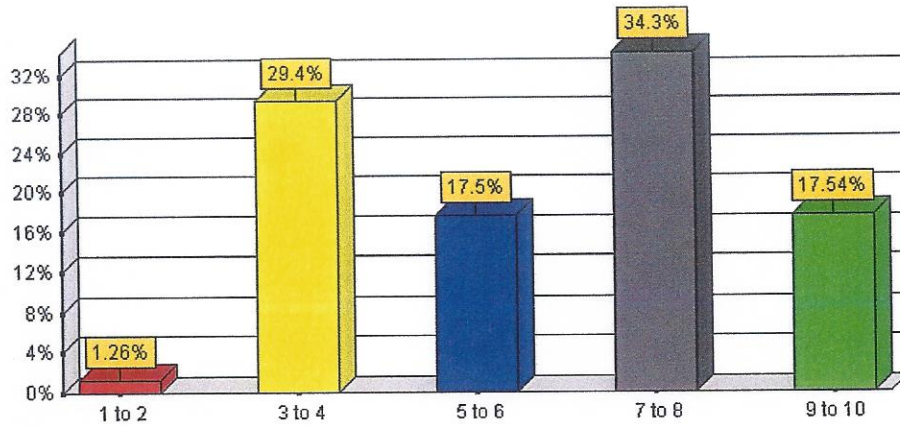


*\*\*The information shown is based on actual data. Pavement sections without actual rating data were not included in this analysis.*

*There are 56.28 miles of rated roadways and 0.45 miles of unrated roadways. Please note that mileage listed with the graph shown above is the portion of the rated roadway miles indicating need (designated as capital or maintenance).*

## Condition Frequency Report - Paved City of Stoughton

Generated on 07/15/2015 01:20:36 PM

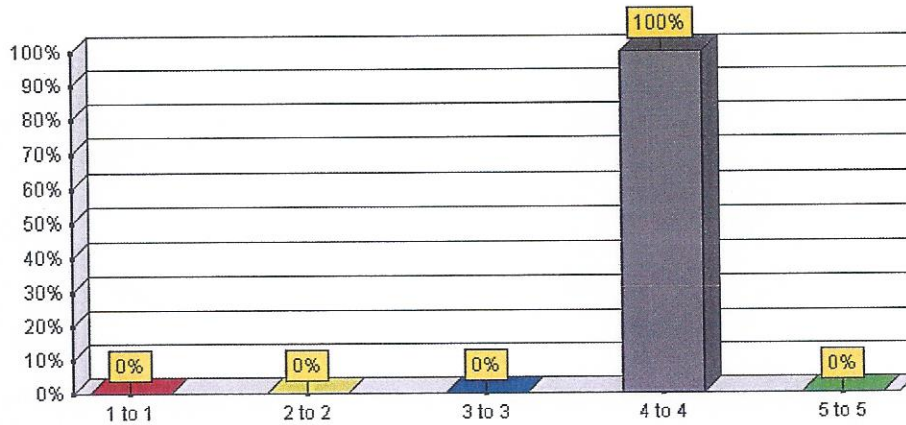


### Rating Range

- Based on 56.23 miles of rated roadways.
- Paved: 45,50,52,55,57,60,65,70,75

## Condition Frequency Report - Unpaved City of Stoughton

Generated on 07/15/2015 01:20:43 PM



### Rating Range

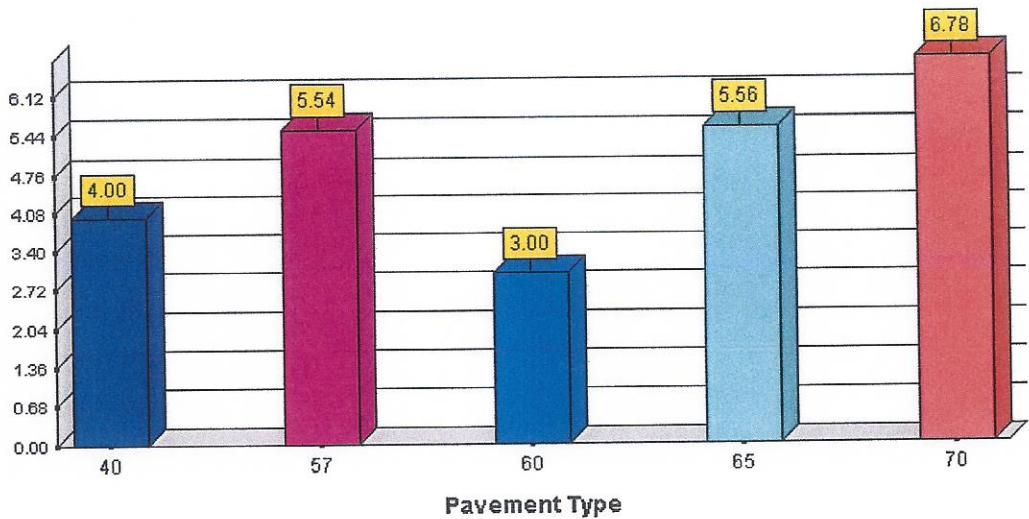
- Based on 0.05 miles of rated roadways.
- Unpaved: 35,40

*\*\*The information shown is based on actual data. Pavement sections without actual rating data were not included in this analysis.*

# Average Rating of Pavement Type

## City of Stoughton

Generated on 07/15/2015 01:21:29 PM



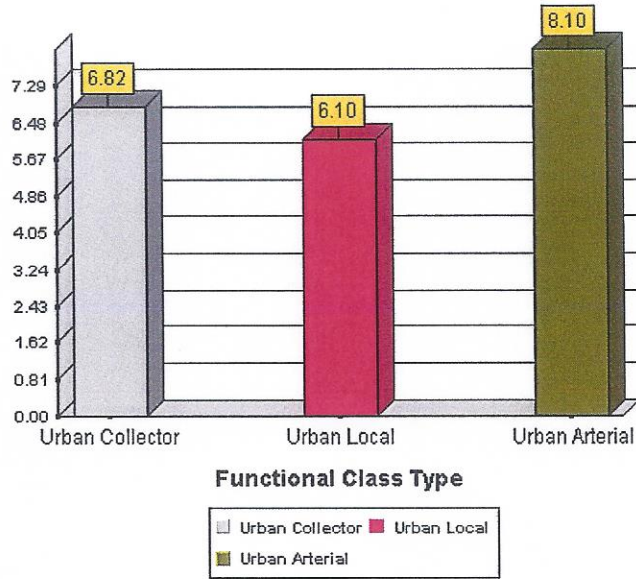
40 - <1-inch Wearing Surface	57 - Cold Mix Asphalt Pvmnt (CMAC) Surface + Base >7
60 - Hot Mix Asphalt Pavement on Concrete (HMAC on PCC)	65 - Hot Mix Resurfacing (overlay) on Asphalt Pavement
70 - Hot Mix Asphalt Pavement (HMAC)	

- 10 = maximum rating for "paved" roads (types 45,50,52,55,57,60,65,70,75)
- 5 = maximum rating for "unpaved" roads - gravel & sealcoats (types 35,40)
- 4 = maximum rating for brick & block (type 80)
- 4 = maximum rating for earthen or "unimproved" roads (types 25,30)

*\*\*The information shown is based on actual data. Pavement sections without actual rating data were not included in this analysis.*

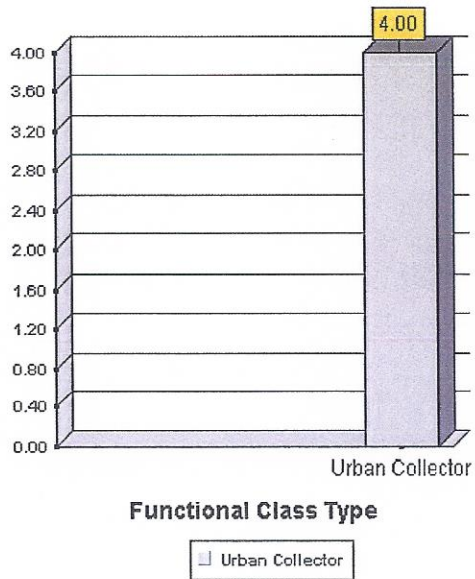
## Average Rating by Functional Class - Paved City of Stoughton

Generated on 07/15/2015 01:21:59 PM



## Average Rating by Functional Class - Unpaved City of Stoughton

Generated on 07/15/2015 01:21:59 PM



*\*\*The information shown is based on actual data. Pavement sections without actual rating data were not included in this analysis.*