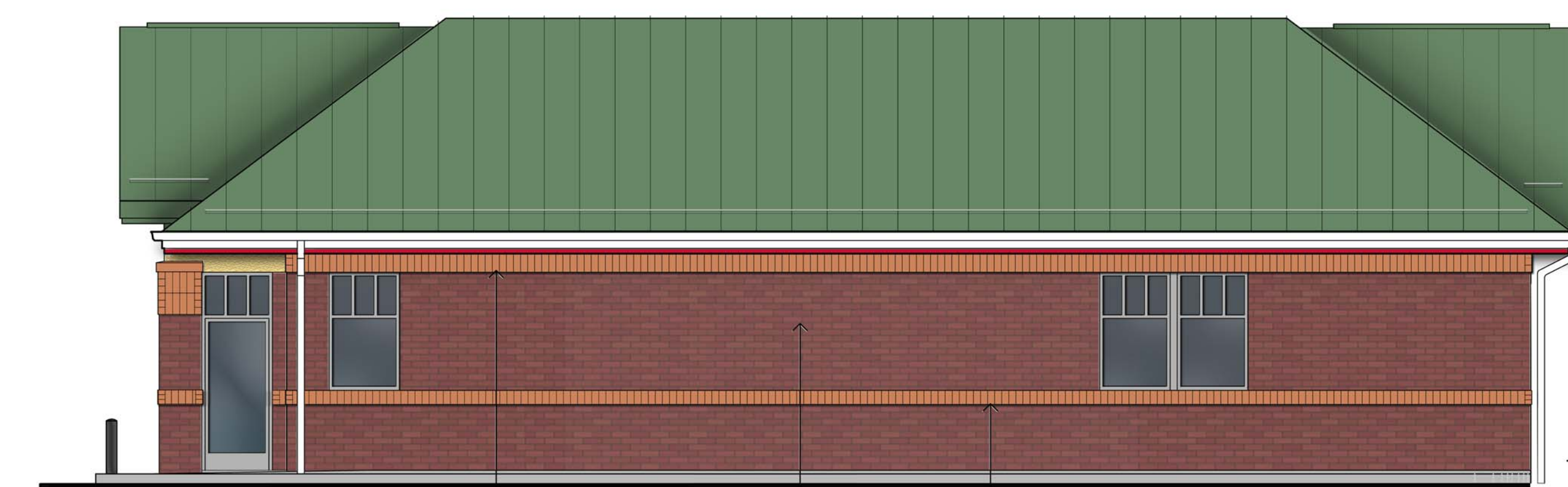
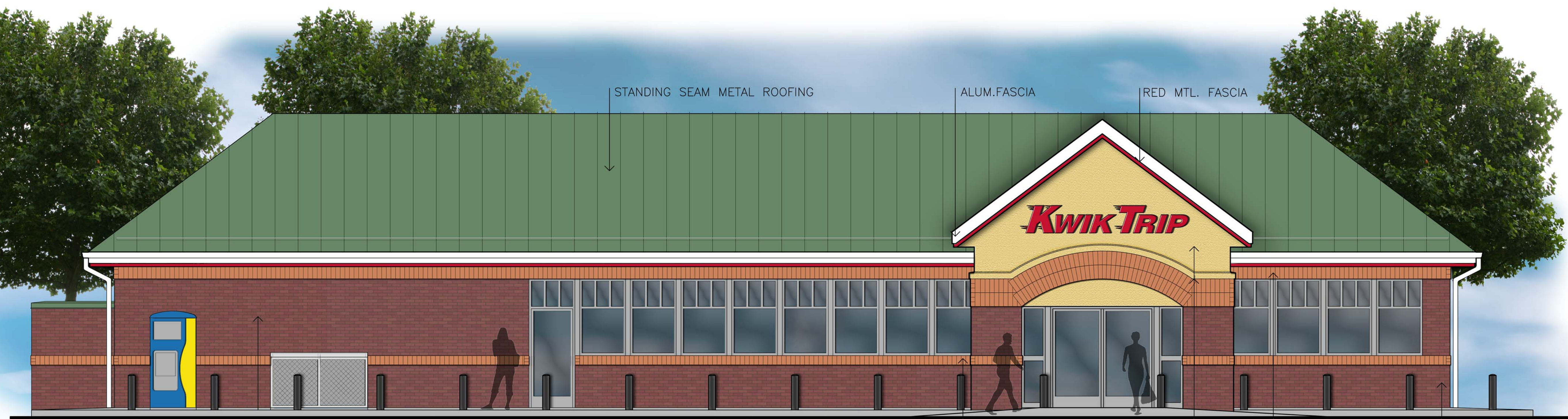


Attachment D



RIGHT SIDE ELEVATION
3/16" = 1'-0"



LEFT SIDE ELEVATION
3/16" = 1'-0"



BACK ELEVATION
3/16" = 1'-0"

STANDING SEAM METAL ROOFING

ALUM.FASCIA

RED MTL. FASCIA

TAN BRICK SOLDIER CRSE
AT WINDOWS

TAN
STUCCO

TAN BRICK SOLDIER
CRSE

RED BRICK
FRONT ELEVATION
1/4" = 1'-0"

TAN BRICK SOLDIER
CRSE

RED BRICK

TAN BRICK ROWLOCK
CRSE

RED BRICK

TAN BRICK SOLDIER
CRSE

TAN BRICK ROWLOCK
CRSE

TAN
STUCCO

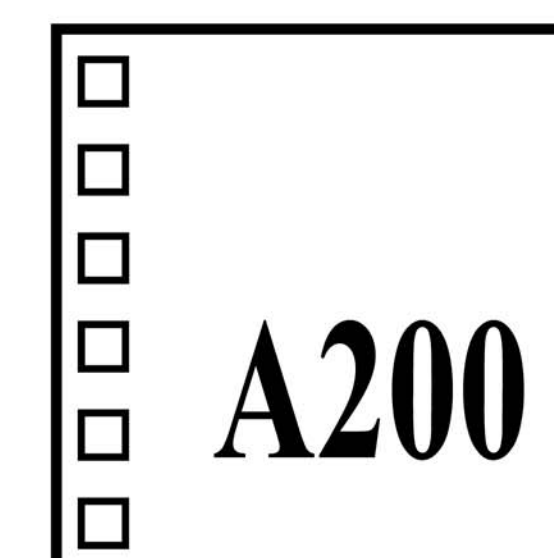
TOTE
ENCLOSURE

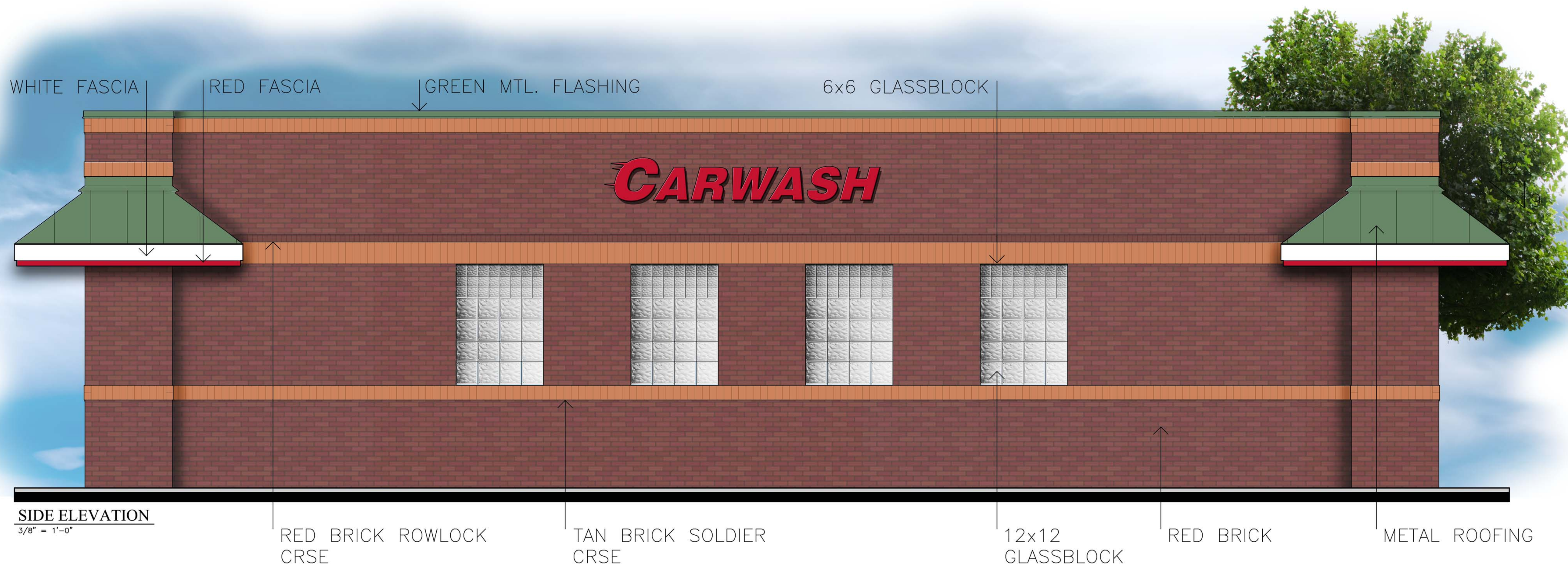


200 Mason Street #3
Onalaska, WI 54650
(608) 784 - 6808
info@larsonarchitect.com

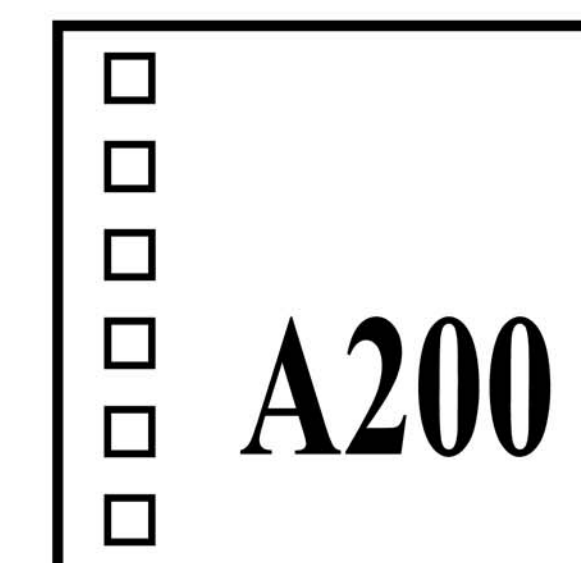


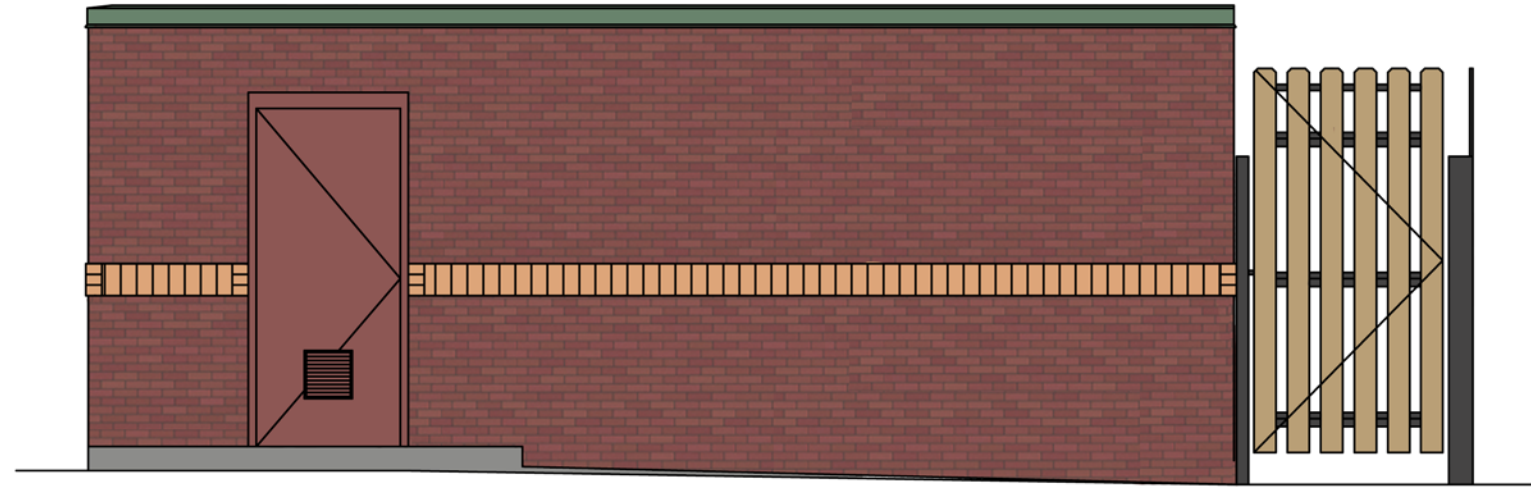
96'x58' R





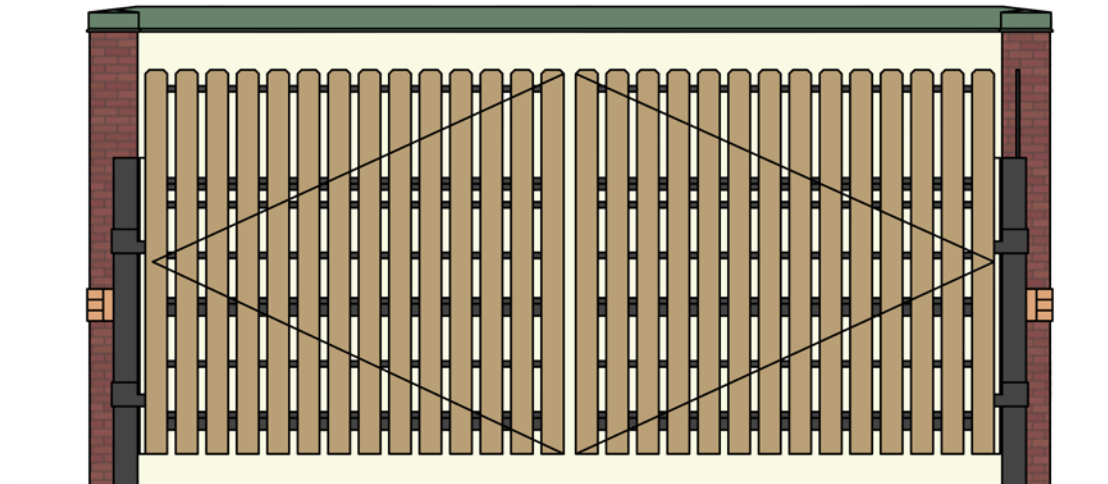
DB CW





Side Elevation

Scale: 1/4"=1'-0"



Front Elevation

Scale: 1/4"=1'-0"

DUMPSTER ENCLOSURE & STORAGE SHED





Standing Seam
Metal Roof

Doors and
Windows

Metal Fascia and Accent



Stucco

Brick



FRONT ELEVATION

TAN STUCCO
(2) TAN BRICK
SOLDIER CRSE
TAN BRICK SOLDIER CRSE
AT WINDOWS
TAN BRICK
SOLDIER CRSE
RED
BRICK
TAN BRICK
ROWLOCK CRSE

☐ ☐ ☐ ☐ ☐

LARSON
ARCHITECT

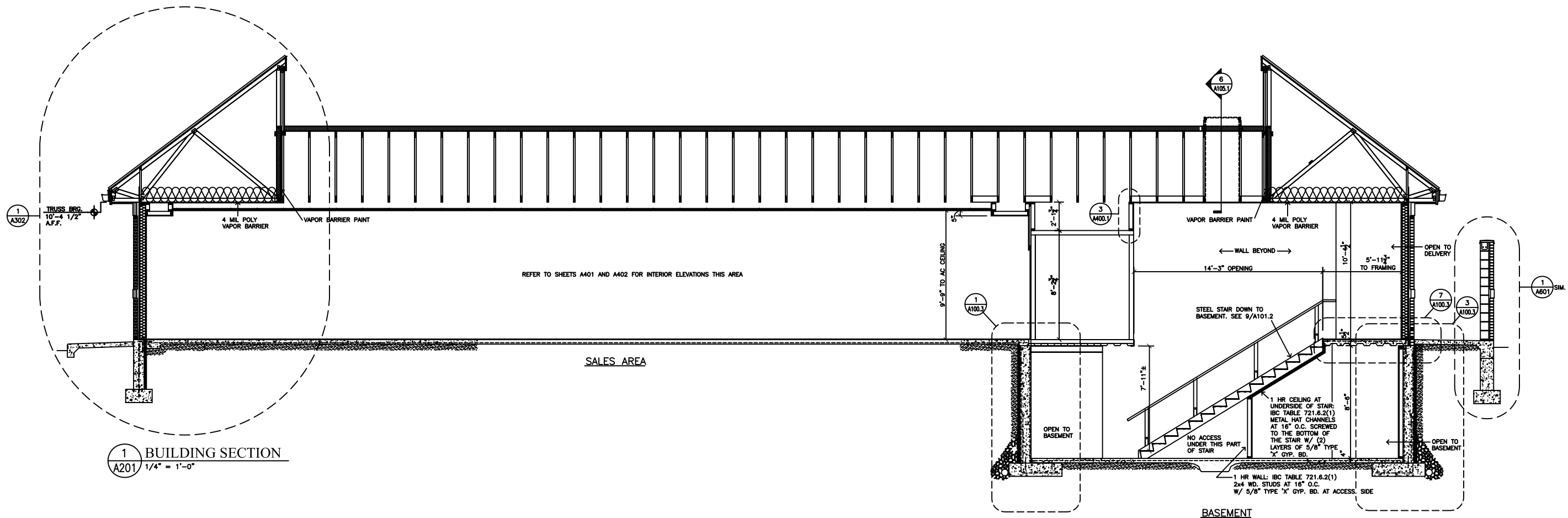
Revised:
Date: JAN 24, 2011
Checked: TPL
Drawn: TPL
Project #:

Kwik
STAR

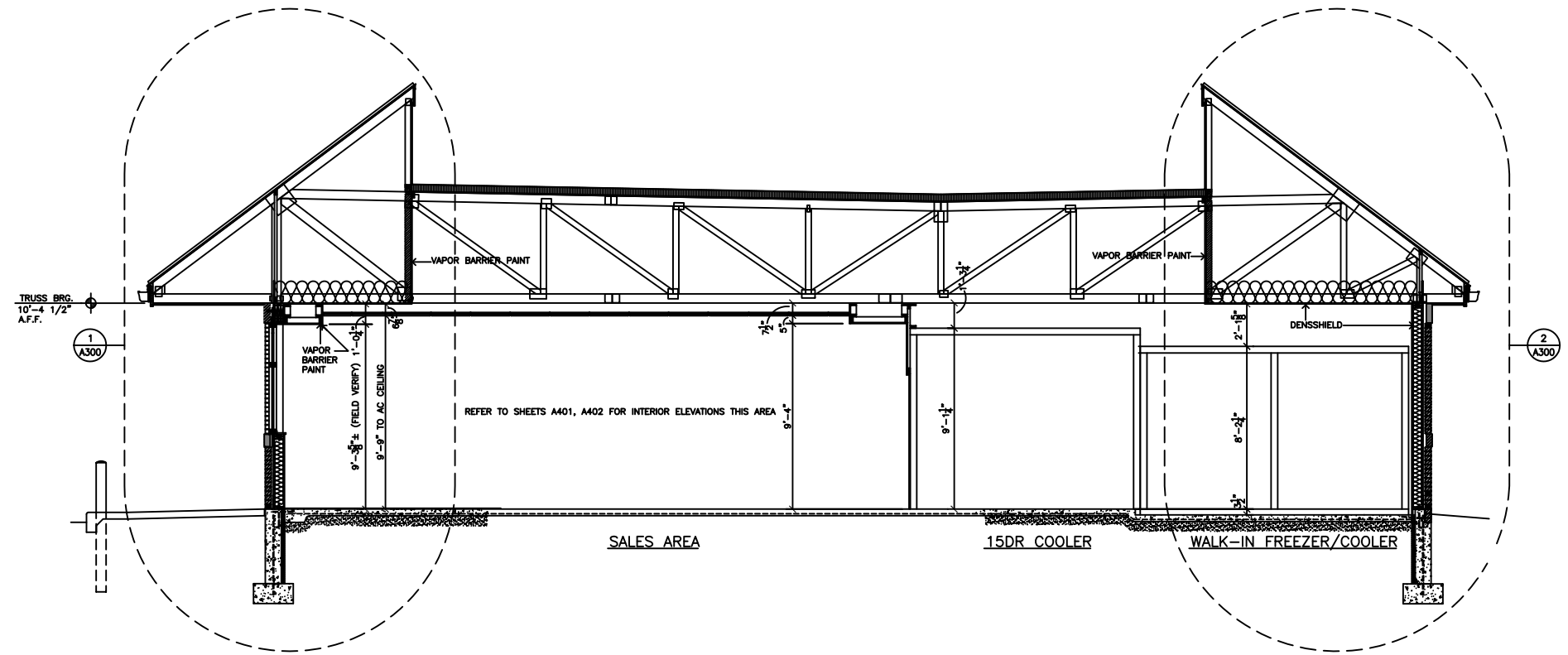
Kwik
TRIP

STORES
STORES

KWIK TRIP STORES



1 BUILDING SECTION
 A201 1/4" = 1'-0"

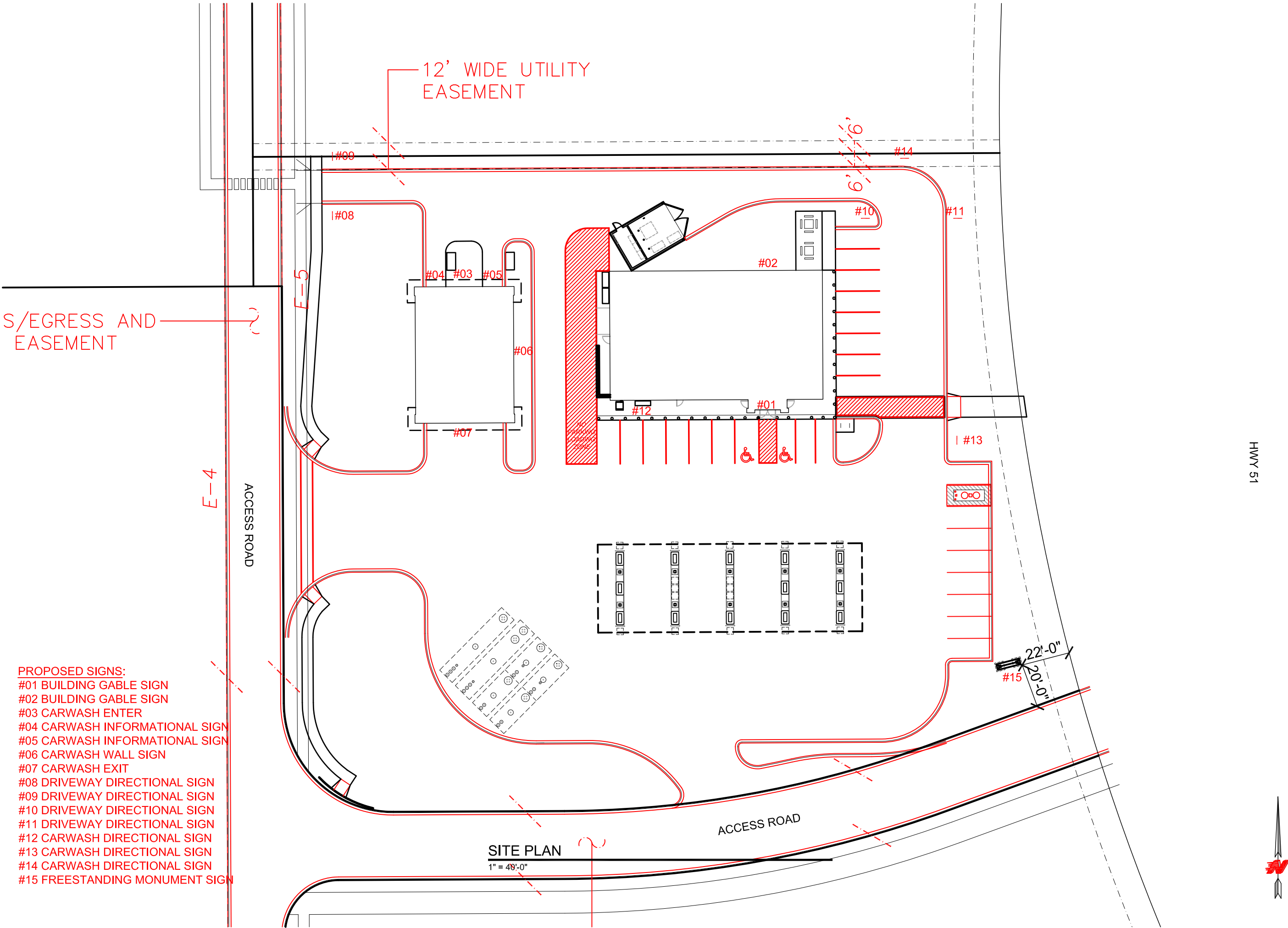


2 BUILDING SECTION
 A201 1/4" = 1'-0"









S/EGRESS AND
EASEMENT

12' WIDE UTILITY
EASEMENT

- PROPOSED SIGNS:
- #01 BUILDING GABLE SIGN
 - #02 BUILDING GABLE SIGN
 - #03 CARWASH ENTER
 - #04 CARWASH INFORMATIONAL SIGN
 - #05 CARWASH INFORMATIONAL SIGN
 - #06 CARWASH WALL SIGN
 - #07 CARWASH EXIT
 - #08 DRIVEWAY DIRECTIONAL SIGN
 - #09 DRIVEWAY DIRECTIONAL SIGN
 - #10 DRIVEWAY DIRECTIONAL SIGN
 - #11 DRIVEWAY DIRECTIONAL SIGN
 - #12 CARWASH DIRECTIONAL SIGN
 - #13 CARWASH DIRECTIONAL SIGN
 - #14 CARWASH DIRECTIONAL SIGN
 - #15 FREESTANDING MONUMENT SIGN

STORES

STORES

KWIK TRIP, Inc.
P.O. BOX 2107
1626 OAK STREET
LA CROSSE, WI 54602-2107
PH. (608) 781-8988
FAX (608) 781-8960

SITE PLAN

CONVENIENCE STORE
WITH 2-BAY CARWASH

HWY 51
STOUGHTON, WI

#	DATE	DESCRIPTION
▲	02/10/14	REVISION 1
▲	07/10/14	REVISION 2

DRAWN BY

J.OSGOOD

SCALE

MULTIPLE

PROJ. NO.

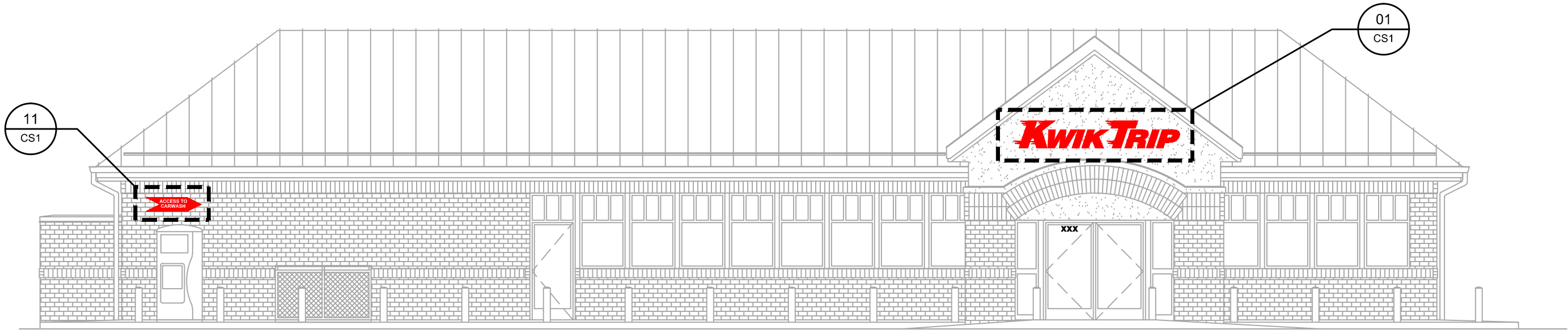
0001

DATE

2014-01-14

SHEET

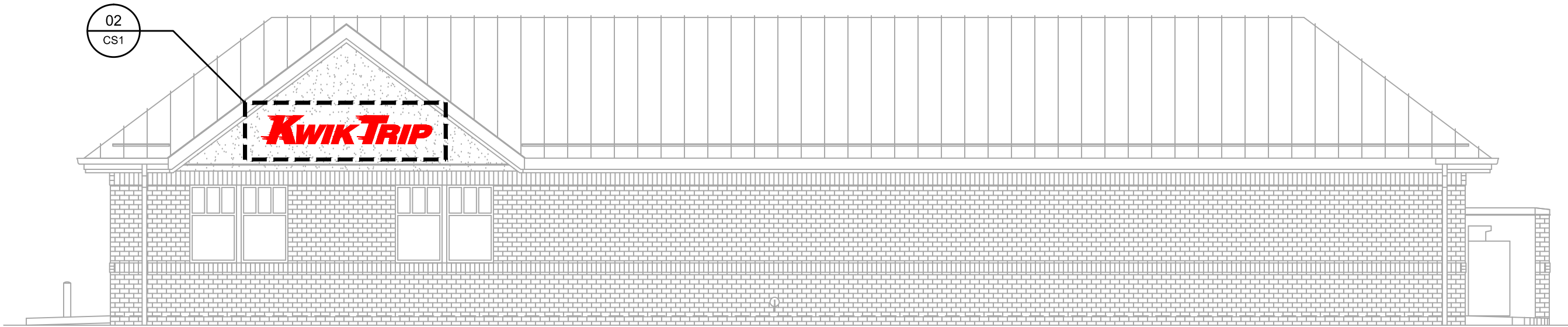
SP1



5" WHITE VINYL ADDRESS LETTERS
ON GLASS DOOR AS SHOWN ABOVE
(VERIFY ACTUAL NUMBERS)

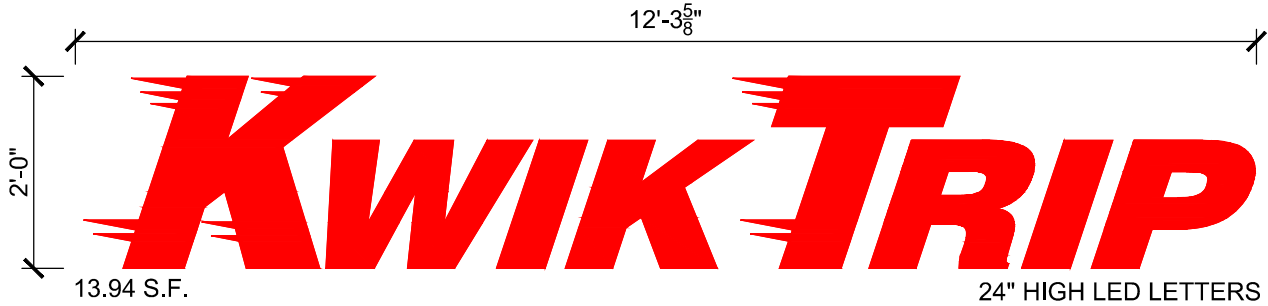
STORE ELEVATION (SOUTH)

SCALE: 1/8" = 1'-0"



STORE ELEVATION (NORTH)

SCALE: 1/8" = 1'-0"



LOGO DETAIL - SIGNS #1 & #2

SCALE: 1/2" = 1'-0"

Kwik
TRIP
TM

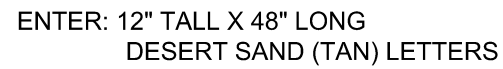
STORES

Kwik
STAR
TM

STORES

KWIK TRIP, Inc.
P.O. BOX 2107
1626 OAK STREET
LA CROSSE, WI 54602-2107
PH. (608) 781-8988
FAX (608) 781-8960

CONVENIENCE STORE SIGNAGE		CONVENIENCE STORE WITH 2-BAY CARWASH		HWY 51 STOUGHTON, WI	
#	DATE	DESCRIPTION			
△	02/10/14	REVISION 1			
△	07/10/14	REVISION 2			
—					
—					
—					
DRAWN BY		J.OSGOOD			
SCALE		MULTIPLE			
PROJ. NO.		0001			
DATE		2014-01-14			
SHEET		CS1			

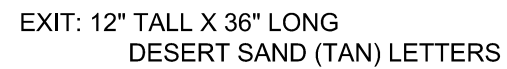


ENTER ELEVATION (NORTH)

SCALE: 3/32" = 1'-0"



SCALE: 3/32" = 1'-0"



SCALE: 3/32" = 1'-0"



LOGO DETAIL - SIGN #6

SCALE: 1/2" = 1'-0"



--	--

--

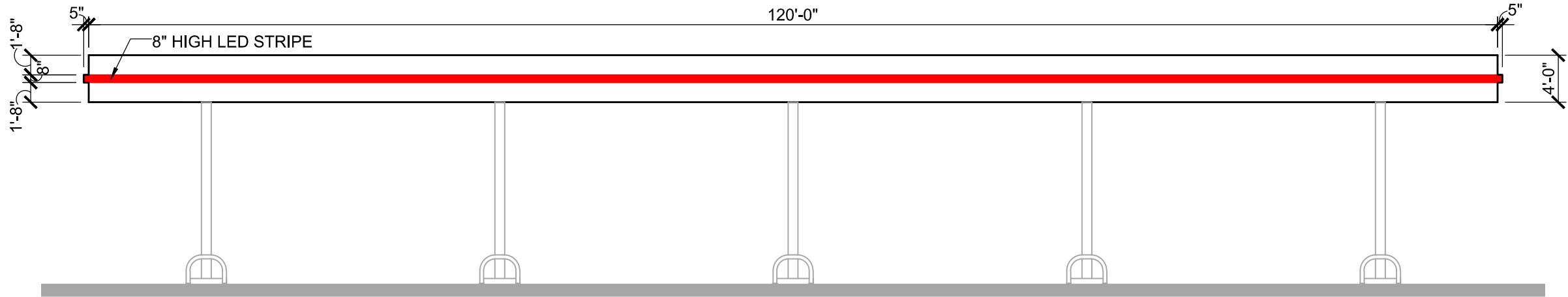
CARWASH SIGNAGE

**CONVENIENCE STORE
WITH 2-BAY CARWASH**

HWY 51
STOUGHTON, WI

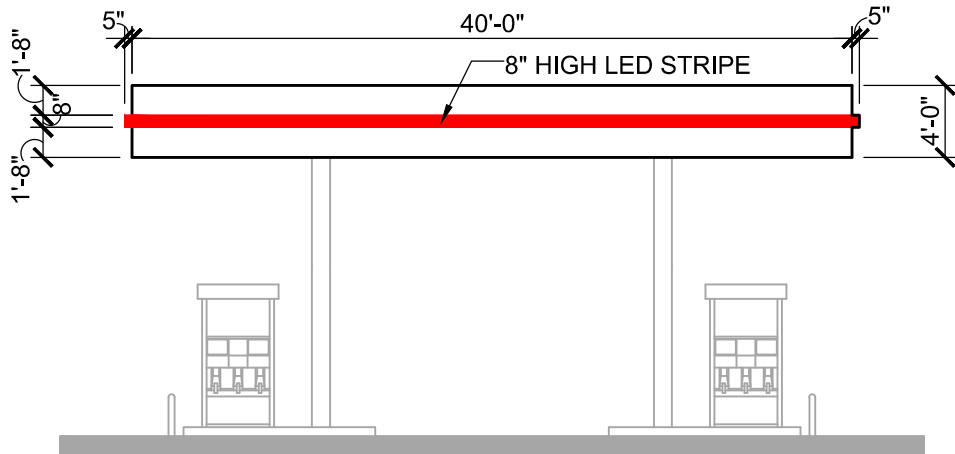
#	DATE	DESCRIPTION
1	02/10/14	REVISION 1
2	07/10/14	REVISION 2

DRAWN BY	J. OSGOOD
SCALE	MULTIPLE
PROJ. NO.	0001
DATE	2014-01-14
SHEET	GW1



CANOPY ELEVATION (NORTH)

SCALE: 3/32" = 1'-0"



CANOPY ELEVATION (EAST)

SCALE: 3/32" = 1'-0"



STORES



STORES



KWIK TRIP, Inc.
P.O. BOX 2107
1626 OAK STREET
LA CROSSE, WI 54602-2107
PH. (608) 781-8988
FAX (608) 781-8960



CANOPY SIGNAGE

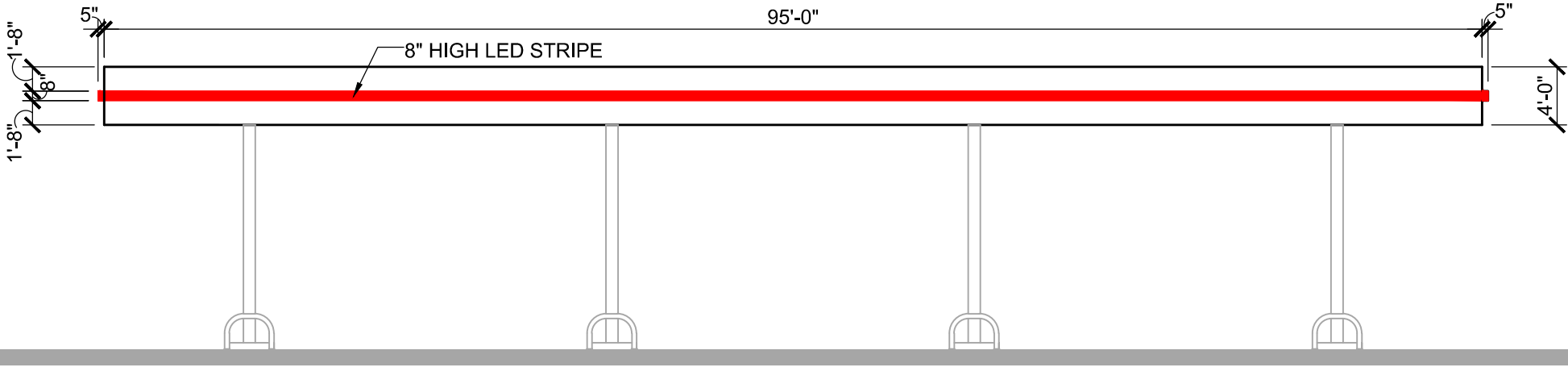
CONVENIENCE STORE
WITH 2-BAY CARWASH

HWY 51
STOUGHTON, WI

#	DATE	DESCRIPTION
	02/10/14	REVISION 1
	07/10/14	REVISION 2

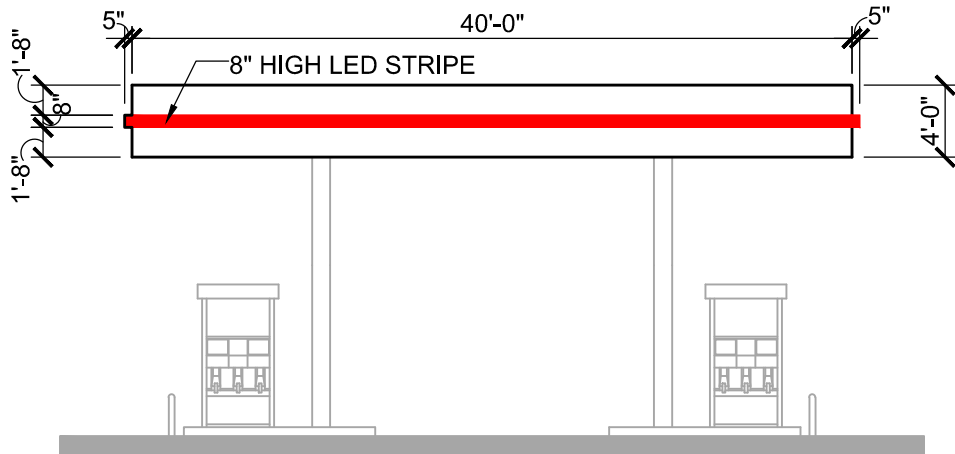
DRAWN BY	J.OSGOOD
SCALE	MULTIPLE
PROJ. NO.	0001
DATE	2014-01-14
SHEET	CA1

7/10/2014 2:26:16 PM. ANSI full bleed B (11.00 x 17.00 inches), 1:1



CANOPY ELEVATION (SOUTH)

SCALE: 3/32" = 1'-0"



CANOPY ELEVATION (WEST)

SCALE: 3/32" = 1'-0"





STORES



STORES

KWIK TRIP, Inc.
P.O. BOX 2107
1626 OAK STREET
LA CROSSE, WI 54602-2107
PH. (608) 781-8988
FAX (608) 781-8960

CANOPY SIGNAGE	CONVENIENCE STORE WITH 2-BAY CARWASH	
	HWY 51 STOUGHTON, WI	
	#	DATE DESCRIPTION
		02/10/14 REVISION 1
		07/10/14 REVISION 2
DRAWN BY J.OSGOOD		
SCALE MULTIPLE		
PROJ. NO. 0001		
DATE 2014-01-14		
SHEET		CA2

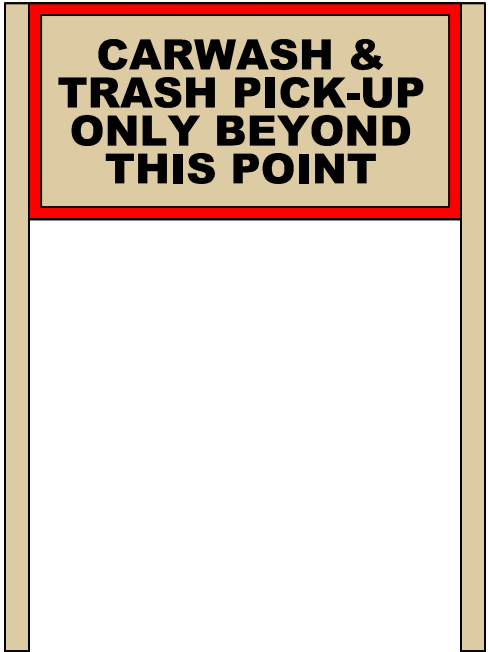


NON-LIT INFORMATIONAL SIGN
RED VINYL ON WHITE ALUMINUM
1'-0"H X 10'-0"W = 10.0 SQ FT

CARWASH INFORMATIONAL SIGN #04 & #05

SCALE: 3/4" = 1'-0"

SINGLE SIDED DIRECTIONAL SIGN

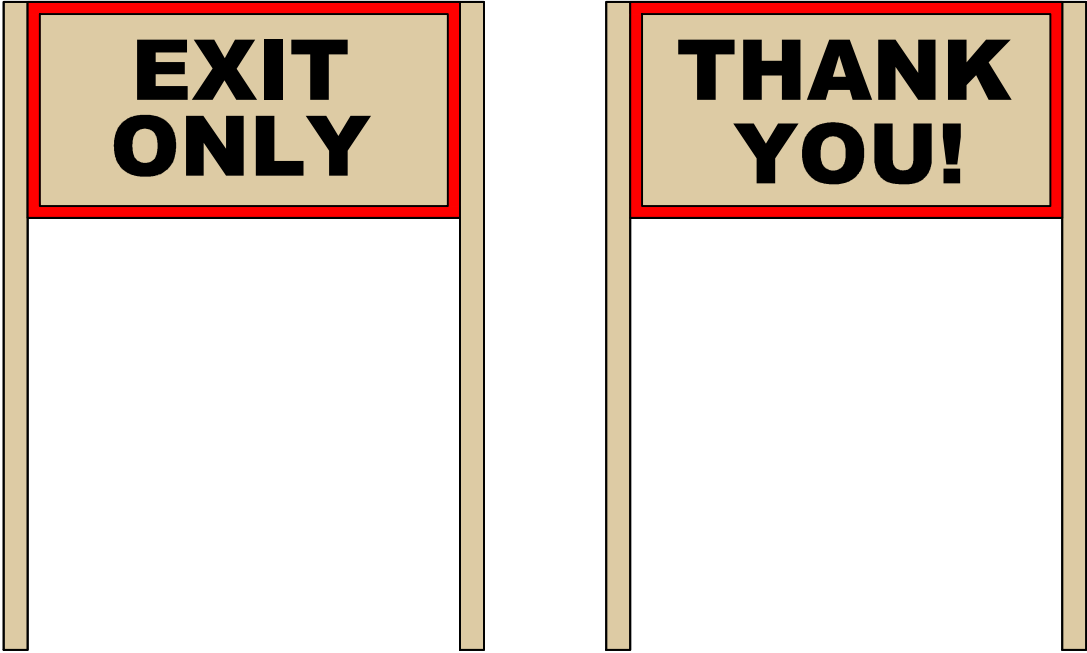


NON-LIT DIRECTIONAL SIGN
RED & BLACK VINYL ON LIGHT BEIGE ALUMINUM
1'-6"H X 3'-0"W X 4'-6"T= 4.50 SQ FT

CARWASH DIRECTIONAL SIGN #10 & #11

SCALE: 3/4" = 1'-0"

DOUBLE SIDED DIRECTIONAL SIGN
STREET SIDE STORE SIDE



NON-LIT DIRECTIONAL SIGN
RED & BLACK VINYL ON LIGHT BEIGE ALUMINUM
1'-6"H X 3'-0"W X 4'-6"T= 4.50 SQ FT

DRIVEWAY DIRECTIONAL SIGN #08 & #09

SCALE: 3/4" = 1'-0"





NON-LIT DIRECTIONAL SIGN
WHITE VINYL ON RED ALUMINUM
1'-0"H X 4'-0"W = 4.0 SQ FT

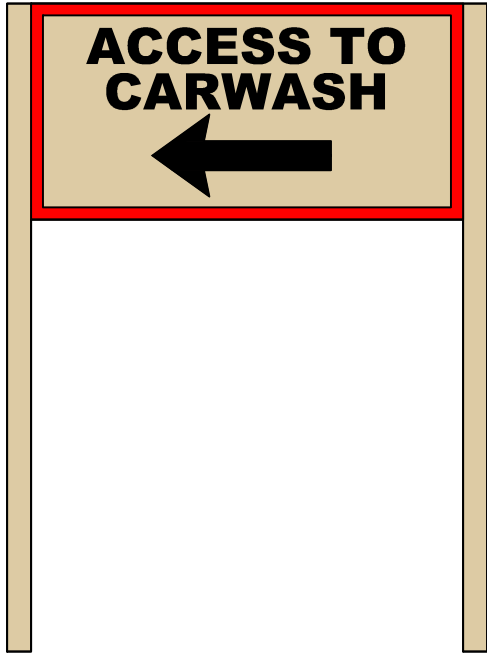
CARWASH DIRECTIONAL SIGN #12

SCALE: 3/4" = 1'-0"



KWIK TRIP, Inc.
P.O. BOX 2107
1626 OAK STREET
LA CROSSE, WI 54602-2107
PH. (608) 781-8988
FAX (608) 781-8960

DIRECTIONAL SIGNAGE		CONVENIENCE STORE WITH 2-BAY CARWASH		HWY 51 STOUGHTON, WI	
#	DATE	DESCRIPTION			
	02/10/14	REVISION 1			
	07/10/14	REVISION 2			
DRAWN BY		J.OSGOOD			
SCALE		MULTIPLE			
PROJ. NO.		0001			
DATE		2014-01-14			
SHEET		DS1			



NON-LIT DIRECTIONAL SIGN
RED & BLACK VINYL ON LIGHT BEIGE ALUMINUM
1'-6"H X 3'-0"W X 4'-6"T= 4.50 SQ FT

CARWASH DIRECTIONAL SIGN #13 & #14

SCALE: 3/4" = 1'-0"



#15 KWIK TRIP FREESTANDING MONUMENT SIGN

SEE ATTACHMENT FROM LA CROSSE SIGN CO



KWIK TRIP, Inc.
P.O. BOX 2107
1626 OAK STREET
LA CROSSE, WI 54602-2107
PH. (608) 781-8988
FAX (608) 781-8960



DIRECTIONAL SIGNAGE		CONVENIENCE STORE WITH 2-BAY CARWASH		HWY 51 STOUGHTON, WI	
#	DATE	DESCRIPTION			
	02/10/14	REVISION 1			
	07/10/14	REVISION 2			
—	—	—			
—	—	—			
—	—	—			
DRAWN BY		J.OSGOOD			
SCALE		MULTIPLE			
PROJ. NO.		0001			
DATE		2014-01-14			
SHEET		DS2			

KWIK TRIP

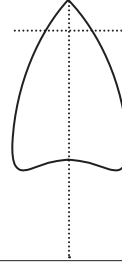
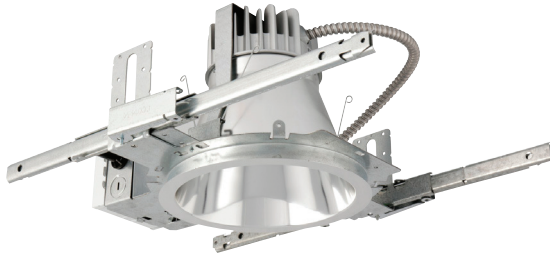
#__Stoughton, WI



20mm 32 x 80 RGB L.E.D. Message center
15.49 overall sq. ft. - 10.827 active area sq. ft.

*COLORS ON SKETCH ARE A REPRESENTATION, ACTUAL COLOR MAY DIFFER

E1



Gotham Architectural Downlighting
 LED Downlights

8" Evo®
 Open Reflector

Solid-State Lighting



FEATURES

OPTICAL SYSTEM

- Self-flanged semi-specular, matte-diffuse or specular lower reflector
- Patented Bounding Ray™ optical design (U.S. Patent No. 5,800,050)
- 45° cutoff to source and source image
- Top-down flash characteristic

MECHANICAL SYSTEM

- 16-gauge galvanized steel construction; maximum 1-1/2" ceiling thickness
- Telescopic mounting bars maximum of 32" and minimum of 15", preinstalled, 4" vertical adjustment
- Toolless adjustments post installation
- Junction box capacity: 8 (4 in, 4 out) 12AWG rated for 90°C
- Light engine and driver accessible through aperture

ELECTRICAL SYSTEM

- Fully serviceable and upgradeable lensed LED light engine
- 70% lumen maintenance at 60,000 hours based on IESNA LM-79-2008
- 120-277VAC, 50/60hz power supply with 0-10V dimming (10-100%); rated for 50,000-hour life
- Overload and short circuit protected
- LEDs tested under LM80

LISTINGS

- Fixtures are CSA certified to meet US and Canadian standards; wet location, covered ceiling

WARRANTY

- 5-year limited warranty. Complete warranty terms located at: www.acuitybrands.com/CustomerResources/Terms_and_conditions.aspx

ORDERING INFORMATION

EXAMPLE: EVO 35/18 8AR 120

EVO	35/29		8AR		120	
Series	Color temperature	Nominal lumen values	Aperture/Trim color	Distribution	Finish	Voltage
EVO	27/ 2700 K	18 1800 lumens	8AR Clear	(blank) 1.0 s/mh	(blank) Semi-specular	120
	30/ 3000 K	22 2200 lumens	8PR Pewter	VND Very narrow (0.43 s/mh)	LD Matte diffuse	277
	35/ 3500 K	29 2900 lumens	8WTR Wheat	ND Narrow (0.52 s/mh)	LS Specular	347
	41/ 4100 K		8GR Gold	MD Medium (0.80 s/mh)		
			8WR¹ White	WD Wide (1.1 s/mh)		

Driver		Options			
(blank) ²	0-10V dimming driver. Minimum dimming level 10%	SF	Single fuse	TRBL	Black painted flange
ECOS2 ^{3,4}	Lutron® Hi-Lume® 2-wire forward-phase dimming driver. Minimum dimming level 1%	RRL	RELOC®-ready luminaire. Provides compatibility with Lithonia RELOC system. Access above ceiling required.	EL ⁷	Emergency battery pack with integral test switch
ECOS3 ^{2,3}	Lutron® Hi-Lume® 3-wire or EcoSystem® dimming driver. Minimum dimming level 1%	NEPP ⁵	Interface for Sensor Switch® nLight® network with integral power supply. Refer to TN-623-01 .	ELR ⁷	Emergency battery pack with remote test switch
		TRW ⁶	White painted flange	CP ⁸	Chicago plenum

ACCESSORIES order as separate catalog numbers (shipped separately)

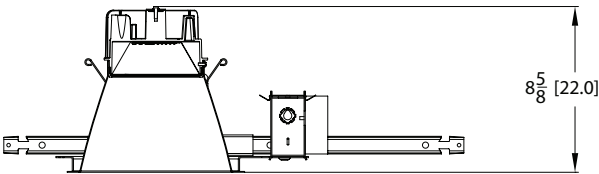
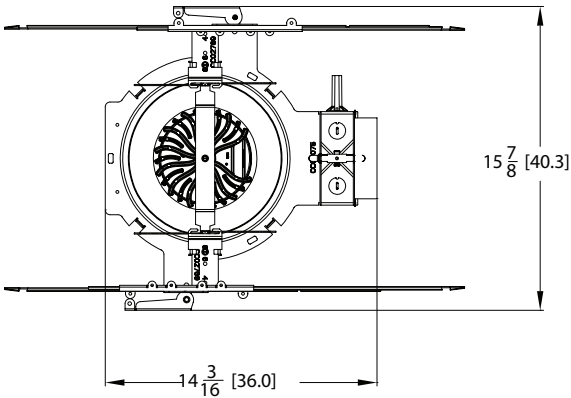
SCA8	Sloped ceiling adapter. Degree of slope must be specified (10D, 15D, 20D, 25D, 30D). Ex: SCA8 10D. Refer to TECH-190 .
CTA4-8 YK	Ceiling thickness adapter (extends mounting frame to accommodate ceiling thickness up to 2").
GVRT	Vandal-resistant trim accessory. Refer to TECH-200 .
ISD BC	0-10V wallbox dimmer. Refer to ISD-BC .

NOTES

ORDERING NOTES	
1. Not available with finishes.	5. Not available with 347V.
2. Refer to TECH-240 for compatible dimmers.	6. Not available with white reflector.
3. Not available with NEPP option.	7. For dimensional changes, refer to TECH-140 . Not available with CP option.
4. 120V only.	8. Not available with EL or ELR options.

DIMENSIONAL DATA

All dimensions are inches (centimeters) unless otherwise noted.



Aperture: 7-7/8 (20.1)
Ceiling Opening: 8-7/8 (21.5)
Overlap Trim: 9-1/4 (23.5)

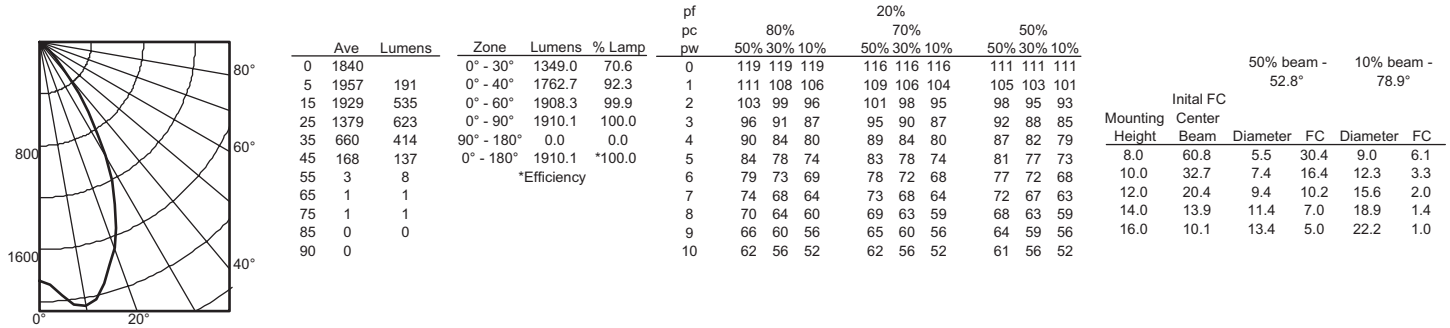
ELECTRICAL

WATTAGE CONSUMPTION MATRIX		
LUMENS	WATTAGE	LUMENS per WATT
2900	49	64
2200	39	63
1800	35	55

Distribution Curve	Distribution Data	Output Data	Coefficient of Utilization	Illuminance: Single Luminaire 30" Above Floor
--------------------	-------------------	-------------	----------------------------	---

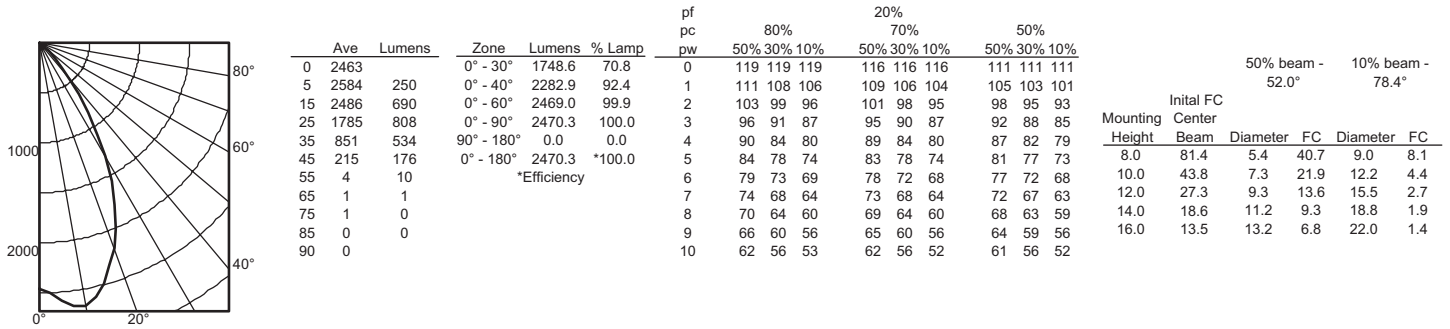
EVO 35/18 8R LS

INPUT WATTS: 34.6, DELIVERED LUMENS: 1910.1, LM/W=55.2, 1.0 S/MH, TEST NO. LTL21102



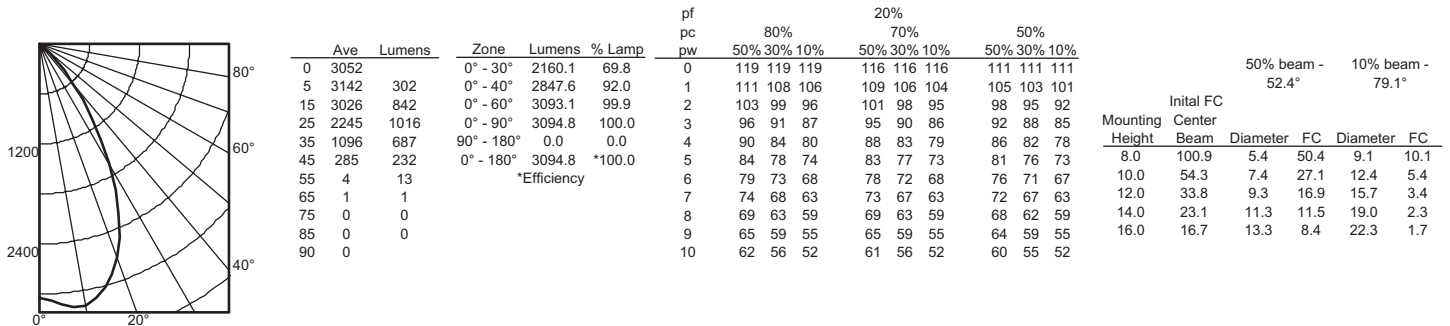
EVO 35/22 8R LS

INPUT WATTS: 39.3, DELIVERED LUMENS: 2470.3, LM/W=62.9, 1.0 S/MH, TEST NO. LTL21112



EVO 35/29 8R LS

INPUT WATTS: 48.6, DELIVERED LUMENS: 3094.8, LM/W=63.7, 1.0 S/MH, TEST NO. LTL21108



PHOTOMETRY NOTES

- Tested in accordance with IESNA LM-79-08.
- Tested to current IES and NEMA standards under stabilized laboratory conditions.
- Actual performance may differ as a result of end-user environment and application.
- Actual wattage may differ by +/- 10% when operating between 120-277V +/- 10%.
- CRI: 83 typical.
- Consult factory or IES file for microgroove baffle, black cone or other photometric reports.

FEATURES & SPECIFICATIONS

INTENDED USE — Built on the compact, low-profile Z strip channel, this solid-state strip offers long maintenance-free life, several color temperatures, lumen outputs and lengths. Ideal for new construction and retrofit applications in both T5 and T8 lengths. Ideal for uplight and downlight in commercial, retail, manufacturing, warehouse, cove and display applications.

CONSTRUCTION — Compact-design channel and cover are formed from code-gauge cold-rolled steel. Improved easy "snap 'n' lock" end plates allow for quick attachment.

Finish: High-gloss, baked white enamel (standard). Five-stage iron phosphate pre-treatment ensures superior paint adhesion and rust resistance. Finish options include galvanized (GALV), matte black (MB) and smoke gray (SKGY).

OPTICS — LEDs provide 83 CRI at 3000K, 3500K or 4000K.

Lumen output ranges from 1700 to 6000 lumens. Beam angle is 110 FWHM (full width at half maximum).

ELECTRICAL — Utilizes high-brightness LEDs integrated on a two-layer circuit board, ensuring cool-running operation. Internal pluggable wiring harness prevents wiring errors. Electronic LED driver is rated for 75 input watts maximum, multi-volt input and 0-10V dimming standard.

In 30°C (86°F) ambient environments, L70 is predicted to be greater than 100,000 hours; L86 is predicted to be 60,000 hours. Luminaire should be installed in applications where ambient temperatures do not exceed 30°C (86°F). Ambient temperatures that exceed 30°C (86°F) will result in reduced life and will void warranty.

INSTALLATION — Tool-less channel cover for easy installation.

Fixture may be surface, pendant or stem mounted. Three-point aligner locks in place for easy continuous row mounting.

LISTINGS — CSA Certified to US and Canadian safety standards. Damp location listed between -25°C (-13°F) and 30°C (86°F).

WARRANTY — 5-year limited warranty. Complete warranty terms located at www.acuitybrands.com/CustomerResources/Terms_and_conditions.aspx

Actual performance may differ as a result of end-user environment and application.

Note: Specifications subject to change without notice.

Catalog Number
Notes
Type



LED Striplight

ZL1

24", 46", 48", 92" & 96" Lengths



CONFIGURATIONS					
All dimensions are shown in inches (centimeters) unless otherwise noted.					
WIDTH	DEPTH	LENGTH	LUMENS	WATTAGE	COMPARABLE FLUORESCENT
2-1/2 (6.4)	1-3/4 (4.4)	46 (116.8) or 48 (121.9)	6000	75	2-lamp 32W T8 or 2-lamp 28W T5
		46 (116.8) or 48 (121.9)	2800	32	1-lamp 32W T8 or 1-lamp 28W T5
		24 (61.0)	3000	39	2-lamp 17W T8 or 2-lamp 15W T5
		24 (61.0)	1700	21	1-lamp 17W T8 or 1-lamp 15W T5
		92 (233.7) or 96 (243.8)	12000	150	4-lamp 32W T8 or 4-lamp 28W T5
		92 (233.7) or 96 (243.8)	5600	64	2-lamp 32W T8 or 2-lamp 28W T5

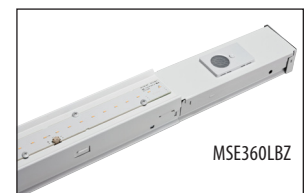
All dimensions are inches (centimeters) unless otherwise indicated.

ORDERING INFORMATION

For shortest lead times, configure product using **standard options (shown in bold)**.

Example: ZL1 L46 2800L LP840

Series	Length	Lumens	Voltage	Lamp	Options	Finish
ZL1 LED striplight	L24 24"	2800L 2800 lumens ¹	(blank) MVOLT	LP840 83 CRI, 4000K	PLR Plug-in wiring ⁴	(blank) White GALV Galvanized MB Matte black SKGY Smoke gray
	L46 46"	6000L 6000 lumens ¹			BDP Ballast disconnect plug	
	L48 48"	1700L 1700 lumens ²		LP830 83 CRI, 3000K	MSE360LBZ 360° motion sensor; for mounting within row or at end of row	
		3000L 3000 lumens ²		LP835 83 CRI, 3500K		
TZL1 LED striplight	L92 92"	5600L 5600 lumens ³				
	L96 96"	12000L 12000 lumens ³				



Accessories: Order as separate catalog number.					
HC36	Hanger chain, 36"	ZACF120	Aircraft cable with feed, 120"	SFR7KIT	Mini 360° motion sensor ⁵
ZACVH	Aircraft cable with hook	ZAC144	Aircraft cable, 144"	ZSPRG	For 15/16" T-grid only
ZAC72	Aircraft cable, 72"	ZACF144	Aircraft cable with feed, 144"	WGZ24	24" wireguard, white
ZACF72	Aircraft cable with feed, 72"	CMRB-50	Aisle motion sensor ⁵	WGZ46	46" wireguard, white ⁶
ZAC120	Aircraft cable, 120"	CMRB-6	360° motion sensor ⁵	WGZ48	48" wireguard, white ⁶

Notes

- Available with 46" and 48" only.
- Available with 24" only.
- Available with 92" and 96" only.
- See ordering information on page 2.
- Field installed only.
- Order 2 for tandem double length fixtures (TZL1)

ZL1 LED striplight

DIMENSIONS

All dimensions are shown in inches (centimeters) unless otherwise noted.
Specifications subject to change without notice.



PHOTOMETRICS

Please see www.lithonia.com.

PRODUCT INFORMATION

Advanced plug-in system with three-circuit capability. Available on industrial and strip products and a variety of architectural products mounted in continuous rows. 1, 2, 3 and 4-lamp fixtures. PLR22 (2-circuit) and PLR33 (3-circuit) crossover harness switches hot circuit serving next fixture in row. Reduces fixture types on job for alternat-

ing circuit applications (see example below.) Easy one-step installation, saves up to 35% on labor costs. Expanded switching flexibility helps save energy. Rows can be 50% longer with two-circuit systems. Polarized, lock-together nylon connectors prevent miswiring in the field. #12 THHN conductor, rated 600V, 90°C. White neutral wire

included. Grounding accomplished by fixture in-row connectors. CSA Certified systems available with up to 2 circuits. G ground required. Note: Specifications subject to change without notice.



Wiring
PLR

Advaned 3-Circuit Plug-In

ORDERING INFORMATION Lead times will vary depending on options selected. Consult with your sales representative.

Series	Number of hot wires		Branch circuits			Ground	
PLR	(blank)	Not required for 22 or 33	<u>Circuits to which ballast is connected</u>			(blank)	No ground in PLR
PLR22	1	Black	(blank)	Not required for 22 or 33	C Blue wire ¹	G	Ground. Maximum 2 circuits
PLR33	2	Black and red	A Black wire		AB Outboard lamps to black, inboard to red		
	3	Black, red and blue ¹	B Red wire		AC Outboard lamps to black, inboard to blue		

ADDITIONAL INFORMATION For additional product information, visit www.lithonia.com.

Typical Applications

- Multiple-circuit and single-circuit for longer continuous rows
- Multiple-circuit with alternating fixtures on separate circuits, 2-circuit (PLR 22) and 3-circuit (PLR 33)
- Multiple circuit with night-lights located along row as desired

TYPICAL APPLICATIONS									
PLR 3 C (All PLR22)	PLR 3 C	PLR 3 C	PLR 3 C	PLR 2 B	PLR 2 B	PLR 2 B	PLR 2 B	PLR 1	PLR 1
Circuit A	Circuit B	Circuit A	Circuit B	Circuit A	Circuit B	Circuit A	Circuit B	Circuit A	Circuit B
(All PLR33)									
Circuit A	Circuit B	Circuit C	Circuit A	Circuit B	Circuit C	Circuit A	Circuit B	Circuit C	Circuit A
PLR 3 A	PLR 3 A	PLR 3 A	PLR 3 C	PLR 3 B	PLR 3 B	PLR 3 B	PLR 3 C	PLR 3 A	PLR 3 A

Notes
1 Ground not available.

CAN-304-SL-RS

304 Series™ Canopy Luminaire – Sparkle Petroleum – Recessed Mount for Single Skin Canopies

Product Description

Luminaire housing is constructed from rugged die cast aluminum components. LED driver is mounted in a sealed weathertight center chamber that allows for access from below the fixture. Luminaire housing incorporates integral high performance heatsink fins specifically designed for LED canopy application. Luminaire mounts directly to the canopy deck and is secured in place with die-cast aluminum trim frame. Luminaire housing is provided with factory applied foam gasket and provides for a watertight seal between luminaire housing and canopy deck. Integral junction box allows ease of installation without need to open luminaire. Suitable for use in single skin canopies with 16" (406 mm) wide panels. See 227 Series for canopies using 12" (305mm) deck sections. Designed for canopies of 19 – 22 gauge (maximum 0.040" [1 mm] thickness).

Performance Summary

Utilizes BetaLED® Technology

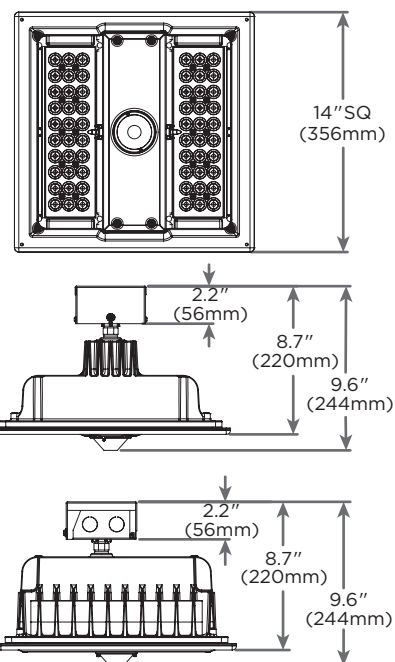
Patented NanoOptic® Product Technology

Made in the U.S.A. of U.S. and imported parts

CRI: Minimum 70 CRI

CCT: 5700K (+ / - 500K) Standard, 4000K (+ / - 300K)

Limited Warranty*: 10 years on luminaire / 10 years on Colorfast DeltaGuard® finish



Ordering Information

Example: CAN-304-SL-RS-04-E-UL-SV-350-OPTIONS

CAN-304	SL	RS		E				
Product	Optic	Mounting	LED Count (x10)	Series	Voltage	Color Options	Drive Current	Options
CAN-304	SL Sparkle Petroleum	RS Recessed Single Skin	04 06	E	UL Universal 120-277V UH Universal 347-480V	WH White (Standard) SV Silver BK Black BZ Bronze PB Platinum Bronze	700* 700mA 525 525mA 350 350mA	40K 4000K Color Temperature - Color temperature per luminaire DIM 0-10V Dimming - Control by others - Refer to dimming spec sheet for availability and additional information - Can't exceed specified drive current F Fuse - When code dictates fusing use time delay fuse - Not available with all multi-level options. Refer to multi-level spec sheet for availability and additional information ML Multi-Level - Refer to multi-level spec sheet for availability and additional information

* See www.cree.com/lighting/products/warranty for warranty terms.

* Requires marked spacing 48" (1,219mm) x 24" (610mm) x 3" (76mm); (48" [1,219mm] luminaire to luminaire, 24" [610mm] luminaire to side wall, 6" [152mm] above luminaire.



Rev. Date: 06/26/13



Product Specifications

CONSTRUCTION & MATERIALS

- Luminaire housing is constructed from rugged die cast aluminum components
- LED driver is mounted in a sealed weathertight center chamber that allows for access from below the luminaire
- Incorporates integral high performance heat sink fins specifically designed for LED canopy applications
- Provided with factory applied foam gasket and provides for a watertight seal between luminaire housing and canopy deck
- Mounts directly to the canopy deck and is secured in place with a die cast aluminum trim frame
- Integral junction box allows ease of installation without need to open luminaire
- Suitable for use in single skin canopies with 16" (406mm) wide panels
- Designed for canopies of 19-22 gauge (maximum 0.040" [1mm] thickness)
- See 227 Series canopies for canopies using 12" (305mm) deck sections
- Exclusive Colorfast DeltaGuard® finish features an E-Coat epoxy primer with an ultra-durable powder topcoat, providing excellent resistance to corrosion, ultraviolet degradation and abrasion. Standard is white. Bronze, black, silver, and platinum bronze are also available

ELECTRICAL SYSTEM

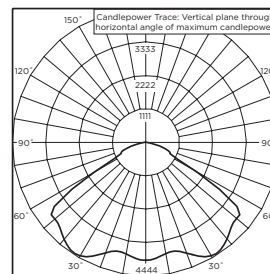
- Input Voltage:** 120-277V or 347-480V, 50 / 60Hz, Class 1 drivers
- Power Factor:** > 0.9 at full load
- Total Harmonic Distortion:** < 20% at full load
- Integral weathertight electrical box with terminal strips (12Ga-20Ga) for easy power hookup
- Integral 10kV surge suppression protection standard
- To address inrush current, slow blow fuse or type C / D breaker should be used

REGULATORY & VOLUNTARY QUALIFICATIONS

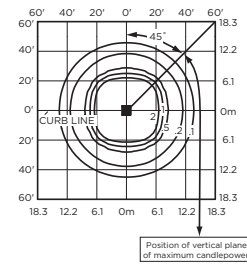
- cULus Listed
- Suitable for wet locations
- Enclosure rated IP66 per IEC 60529
- Consult factory for CE Certified products
- 10kV surge suppression protection tested in accordance with IEEE / ANSI C62.41.2
- Luminaire and finish endurance tested to withstand 5,000 hours of elevated ambient salt fog conditions as defined in ASTM Standard B 117
- Pending product qualification on the DesignLights Consortium ("DLC") Qualified Products List ("QPL") when ordered with PS or SL optics
- RoHS Compliant
- Meets Buy American requirements within ARRA

Photometry

All published luminaire photometric testing performed to IESNA LM-79-08 standards by Independent Testing Laboratories, a NVLAP certified laboratory.



ITL Test Report #: 77415
CAN-304-SL**-06-E-UL-700-40K
Initial Delivered Lumens: 12,707



CAN-304-SL**-06-E-UL-700-40K
Mounting Height: 15' (4.6m)
Initial Delivered Lumens: 12,760
Initial FC at grade

IES Files

To obtain an IES file specific to your project consult:
<http://www.cree.com/lighting/tools-and-support/exterior-ies-configuration-tool>

Lumen Output, Electrical, and Lumen Maintenance Data

Sparkle Petroleum Distribution												
LED Count (x10)	5700K		4000K		System Watts 120-480V	TOTAL CURRENT						50K Hours Projected Lumen Maintenance Factor*** @ 15° C (59° F)
	Initial Delivered Lumens*	BUG Ratings** Per TM-15-II	Initial Delivered Lumens*	BUG Ratings** Per TM-15-II		120V	208V	240V	277V	347V	480V	
350mA @ 25° C (77° F)												
04	5,249	B2 U0 G1	5,055	B2 U0 G1	46	0.39	0.24	0.22	0.21	0.15	0.12	94%
06	7,794	B3 U0 G1	7,506	B2 U0 G1	69	0.57	0.34	0.30	0.27	0.21	0.16	
525mA @ 25° C (77° F)												
04	7,349	B2 U0 G1	7,077	B2 U0 G1	71	0.59	0.35	0.31	0.28	0.21	0.16	93%
06	10,912	B3 U0 G1	10,508	B3 U0 G1	101	0.84	0.49	0.43	0.38	0.30	0.22	
700mA @ 25° C (77° F)												
04	8,924	B3 U0 G1	8,593	B3 U0 G1	94	0.79	0.46	0.40	0.36	0.28	0.21	91%
06	13,250	B3 U0 G1	12,760	B3 U0 G1	135	1.14	0.65	0.57	0.50	0.40	0.29	

* Actual production yield may vary between -4 and +10% of initial delivered lumens.

** For more information on the IES BUG (Backlight-Uplight-Glare) Rating visit www.iesna.org/PDF/Erratas/TM-15-11BugRatingsAddendum.pdf.

*** For recommended lumen maintenance factor data see TD-13. Calculated L70 based on 6,000 hours LM-80-08 testing: > 150,000 hours.

ARE-EDG-4M-DA

Cree Edge™ Area Luminaire – Type IV Medium – Direct Arm Mount

Product Description

Slim, low profile design minimizes wind load requirements. Luminaire sides are rugged cast aluminum with integral, weathertight LED driver compartments and high performance aluminum heat sinks. Convenient, interlocking mounting method. Mounting housing is rugged die cast aluminum and mounts to 3–6" (76–152mm) square or round pole. Luminaire is secured by two 5/16-18 UNC bolts spaced on 2" (51mm) centers.

Performance Summary

Utilizes BetaLED® Technology

Patented NanoOptic® Product Technology

Made in the U.S.A. of U.S. and imported parts

CRI: Minimum 70 CRI

CCT: 5700K (+ / - 500K) Standard, 4000K (+ / - 300K)

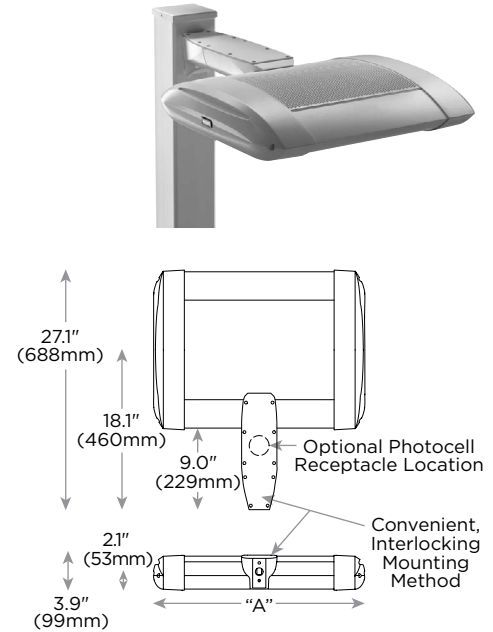
Limited Warranty†: 10 years on luminaire / 10 years on Colorfast DeltaGuard® finish

EPA and Weight: Reference EPA and Weight spec sheet

Accessories

Field Installed Accessories

XA-BRDSPK
Bird Spikes



LED Count (x10)	Dim. "A"
04	12.1" (306mm)
06	14.1" (357mm)
08	16.1" (408mm)
10	18.1" (459mm)
12	20.1" (510mm)
14	22.1" (560mm)
16	24.1" (611mm)
20	28.1" (713mm)
24	32.1" (814mm)

Ordering Information

Example: ARE-EDG-4M-DA-04-E-UL-SV-350-OPTIONS

ARE-EDG	4M	DA		E				
Product	Optic	Mounting	LED Count (x10)	Series	Voltage	Color Options	Drive Current	Options
ARE-EDG	4M Type IV Medium	DA Direct Arm	04 06 08 10 12 14 16 20 24	E	UL Universal 120–277V UH Universal 347–480V 34 347V	SV Silver (Standard) BK Black BZ Bronze PB Platinum Bronze WH White	350* 350mA 525** 525mA 700*** 700mA	40K 4000K Color Temperature - Color temperature per luminaire DIM 0–10V Dimming - Control by others - Refer to dimming spec sheet for details - Can't exceed specified drive current F Fuse - When code dictates fusing, use time delay fuse - Not available with all ML options. Refer to ML spec sheet for availability with ML options HL Hi / Low (175 / 350 / 525 Dual Circuit Input) - Refer to ML spec sheet for details - Sensor not included P Photocell - Not available with all ML options. Refer to ML spec sheet for availability with ML options - Must specify voltage other than UH R NEMA Photocell Receptacle - Not available with all ML options. Refer to ML spec sheet for availability with ML options - Photocell by others ML Multi-Level - Refer to ML spec sheet for details

† See www.cree.com/lighting/products/warranty for warranty terms

* Available on luminaires with 60–240 LEDs.

** Available on luminaires with 40–160 LEDs.

*** Available on luminaires with 40–60 LEDs.



Rev. Date: 09/27/13



Product Specifications

CONSTRUCTION & MATERIALS

- Slim, low profile, minimizing wind load requirements
- Luminaire sides are rugged die cast aluminum with integral, weathertight LED driver compartments and high performance heat sinks
- Convenient interlocking mounting method. Mounting housing is rugged die cast aluminum mounting to 3-6" (76-152mm) square or round pole, secured by two 5 / 16-18 UNC bolts spaced on 2" (51mm) centers
- Includes leaf / debris guard
- Exclusive Colorfast DeltaGuard® finish features an E-Coat epoxy primer with an ultra-durable powder topcoat, providing excellent resistance to corrosion, ultraviolet degradation and abrasion. Standard is silver. Bronze, black, white, and platinum bronze are also available

ELECTRICAL SYSTEM

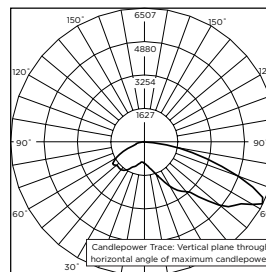
- **Input Voltage:** 120-277V or 347-480V, 50 / 60Hz, Class 1 drivers
- **Power Factor:** > 0.9 at full load
- **Total Harmonic Distortion:** < 20% at full load
- Integral weathertight electrical box with terminal strips (12Ga-20Ga) for easy power hookup
- Integral 10kV surge suppression protection standard
- To address inrush current, slow blow fuse or type C / D breaker should be used

REGULATORY & VOLUNTARY QUALIFICATIONS

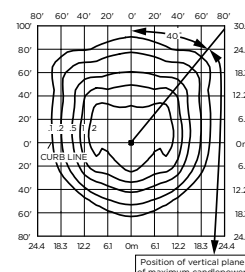
- cULus Listed
- Suitable for wet locations
- Enclosure rated IP66 per IEC 60529 when ordered without P or R options
- Consult factory for CE Certified products
- Certified to ANSI C136.31-2001, 3G bridge and overpass vibration standards
- 10kV surge suppression protection tested in accordance with IEEE / ANSI C62.41.2
- Luminaire and finish endurance tested to withstand 5,000 hours of elevated ambient salt fog conditions as defined in ASTM Standard B 117
- Product qualified on the DesignLights Consortium™ ("DLC") Qualified Products List ("QPL") when ordered without full backlight control shield
- Meets Buy American requirements within ARRA

Photometry

All published luminaire photometric testing performed to IESNA LM-79-08 standards by a NVLAP certified laboratory.



CSA Test Report #: 6438
ARE-EDG-4M--06-E-UL-700-40K**
Initial Delivered Lumens: 11,367



ARE-EDG-4M--12-E-UL-525-40K**
Mounting Height: 25' (7.6m) A.F.G.
Initial Delivered Lumens: 17,710
Initial FC at grade

IES Files

To obtain an IES file specific to your project consult:
<http://www.cree.com/lighting/tools-and-support/exterior-ies-configuration-tool>

Lumen Output, Electrical, and Lumen Maintenance Data

Type IV Medium Distribution												
LED Count (x10)	5700K		4000K		System Watts 120-480V	TOTAL CURRENT						50K Hours Projected Lumen Maintenance Factor @ 15 °C (59 °F)**
	Initial Delivered Lumens*	BUG Ratings** Per TM-15-II	Initial Delivered Lumens*	BUG Ratings** Per TM-15-II		120V	208V	240V	277V	347V	480V	
350mA @ 25 °C (77 °F)												
06	6,584	B2 U0 G2	6,340	B2 U0 G2	66	0.52	0.31	0.28	0.26	0.20	0.15	93%
08	8,779	B2 U0 G2	8,454	B2 U0 G2	90	0.75	0.44	0.38	0.34	0.26	0.20	
10	10,947	B2 U0 G2	10,542	B2 U0 G2	110	0.92	0.53	0.47	0.41	0.32	0.24	
12	13,137	B3 U0 G3	12,650	B3 U0 G3	130	1.10	0.63	0.55	0.48	0.38	0.28	
14	15,229	B3 U0 G3	14,665	B3 U0 G3	158	1.32	0.77	0.68	0.62	0.47	0.35	
16	17,405	B3 U0 G3	16,760	B3 U0 G3	179	1.49	0.87	0.77	0.68	0.53	0.39	
20	21,756	B3 U0 G3	20,950	B3 U0 G3	220	1.84	1.06	0.93	0.83	0.64	0.47	
24	26,107	B4 U0 G3	25,140	B4 U0 G3	261	2.19	1.26	1.10	0.97	0.76	0.56	
525mA @ 25 °C (77 °F)												
04	6,216	B2 U0 G2	5,986	B2 U0 G1	70	0.58	0.34	0.31	0.28	0.21	0.16	92%
06	9,218	B2 U0 G2	8,876	B2 U0 G2	101	0.84	0.49	0.43	0.38	0.30	0.22	
08	12,290	B3 U0 G3	11,835	B3 U0 G2	133	1.13	0.66	0.58	0.51	0.39	0.28	
10	15,326	B3 U0 G3	14,759	B3 U0 G3	171	1.43	0.83	0.74	0.66	0.50	0.38	
12	18,391	B3 U0 G3	17,710	B3 U0 G3	202	1.69	0.98	0.86	0.77	0.59	0.44	
14	21,321	B3 U0 G3	20,531	B3 U0 G3	232	1.94	1.12	0.98	0.87	0.68	0.50	
16	24,367	B4 U0 G3	23,464	B3 U0 G3	263	2.21	1.27	1.11	0.97	0.77	0.56	
700mA @ 25 °C (77 °F)												
04	7,593	B2 U0 G2	7,311	B2 U0 G2	92	0.78	0.46	0.40	0.36	0.27	0.20	90%
06	11,259	B2 U0 G2	10,842	B2 U0 G2	134	1.14	0.65	0.57	0.50	0.39	0.29	

* Actual production yield may vary between -4 and +10% of initial delivered lumens.

** For more information on the IES BUG (Backlight-Uplight-Glare) Rating visit www.iesna.org/PDF/Erratas/TM-15-II/BUGRatingsAddendum.pdf.

*** For recommended lumen maintenance factor data see TD-13. Calculated L_{90} based on 6,000 hours LM-80-08 testing; > 150,000 hours.

ARE-EDG-4MB/4MP-DA

Cree Edge™ Area Luminaires – Type IV Medium w/ Backlight Control – Direct Arm Mount

Product Description

Slim, low profile design minimizes wind load requirements. Luminaire sides are rugged cast aluminum with integral, weathertight LED driver compartments and high performance aluminum heat sinks. Convenient, interlocking mounting method. Mounting housing is rugged die cast aluminum and mounts to 3–6" (76–152mm) square or round pole. Luminaire is secured by two 5/16-18 UNC bolts spaced on 2" (51mm) centers.

Performance Summary

Utilizes BetaLED® Technology

Patented NanoOptic® Product Technology

Made in the U.S.A. of U.S. and imported parts

CRI: Minimum 70 CRI

CCT: 5700K (+ / - 500K) Standard, 4000K (+ / - 300K)

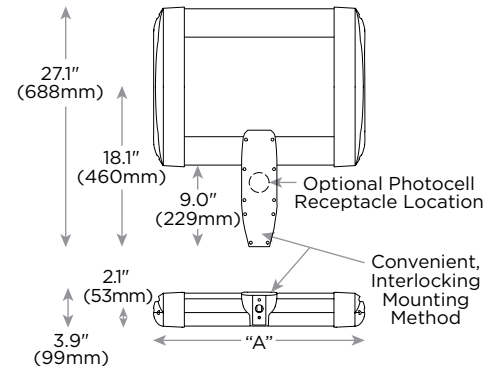
Limited Warranty†: 10 years on luminaire / 10 years on Colorfast DeltaGuard® finish

EPA and Weight: Reference EPA and Weight spec sheet

Accessories

Field Installed Accessories

XA-BRDSPK
Bird Spikes



LED Count (x10)	Dim. "A"
04	12.1" (306mm)
06	14.1" (357mm)
08	16.1" (408mm)
10	18.1" (459mm)
12	20.1" (510mm)
14	22.1" (560mm)
16	24.1" (611mm)
20	28.1" (713mm)
24	32.1" (814mm)

Ordering Information

Example: ARE-EDG-4MB-DA-04-E-UL-SV-350-OPTIONS

ARE-EDG		DA		E				
Product	Optic	Mounting	LED Count (x10)	Series	Voltage	Color Options	Drive Current	Options
ARE-EDG	4MB Type IV Medium w / BLS 4MP Type IV Medium w / Partial BLS	DA Direct Arm	04 06 08 10 12 14 16 20 24	E	UL Universal 120–277V UH Universal 347–480V 34 347V	SV Silver (Standard) BK Black BZ Bronze PB Platinum Bronze WH White	350* 350mA 525* 525mA 700** 700mA	40K 4000K Color Temperature - Color temperature per luminaire DIM 0–10V Dimming - Control by others - Refer to dimming spec sheet for details - Can't exceed specified drive current F Fuse - When code dictates fusing, use time delay fuse - Not available with all ML options. Refer to ML spec sheet for availability with ML options HL Hi / Low (175 / 350 / 525 Dual Circuit Input) - Refer to ML spec sheet for details - Sensor not included P Photocell - Not available with all ML options. Refer to ML spec sheet for availability with ML options - Must specify voltage other than UH R NEMA Photocell Receptacle - Not available with all ML options. Refer to ML spec sheet for availability with ML options - Photocell by others ML Multi-Level - Refer to ML spec sheet for details

† See www.cree.com/lighting/products/warranty for warranty terms

* Available on luminaires with 60–240 LEDs.

** Available on luminaires with 40–160 LEDs.

*** Available on luminaires with 40–60 LEDs.



Rev. Date: 09/27/13



Product Specifications

CONSTRUCTION & MATERIALS

- Slim, low profile, minimizing wind load requirements
- Luminaire sides are rugged die cast aluminum with integral, weathertight LED driver compartments and high performance heat sinks
- Convenient interlocking mounting method. Mounting housing is rugged die cast aluminum mounting to 3-6" (76-152mm) square or round pole, secured by two 5 / 16-18 UNC bolts spaced on 2" (51mm) centers
- Includes leaf / debris guard
- Exclusive Colorfast DeltaGuard® finish features an E-Coat epoxy primer with an ultra-durable powder topcoat, providing excellent resistance to corrosion, ultraviolet degradation and abrasion. Standard is silver. Bronze, black, white, and platinum bronze are also available

ELECTRICAL SYSTEM

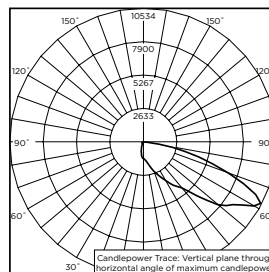
- **Input Voltage:** 120-277V or 347-480V, 50 / 60Hz, Class 1 drivers
- **Power Factor:** > 0.9 at full load
- **Total Harmonic Distortion:** < 20% at full load
- Integral weathertight electrical box with terminal strips (12Ga-20Ga) for easy power hookup
- Integral 10kV surge suppression protection standard
- To address inrush current, slow blow fuse or type C / D breaker should be used

REGULATORY & VOLUNTARY QUALIFICATIONS

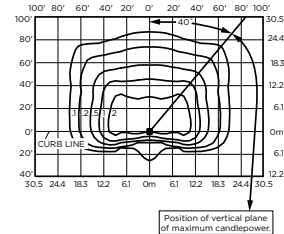
- cULus Listed
- Suitable for wet locations
- Enclosure rated IP66 per IEC 60529 when ordered without P or R options
- Consult factory for CE Certified products
- Certified to ANSI C136.31-2001, 3G bridge and overpass vibration standards
- 10kV surge suppression protection tested in accordance with IEEE / ANSI C62.41.2
- Luminaire and finish endurance tested to withstand 5,000 hours of elevated ambient salt fog conditions as defined in ASTM Standard B 117
- Product qualified on the DesignLights Consortium™ ("DLC") Qualified Products List ("QPL") when ordered without full backlight control shield
- Meets Buy American requirements within ARRA

Photometry

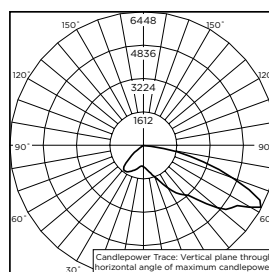
All published luminaire photometric testing performed to IESNA LM-79-08 standards by a NVLAP certified laboratory.



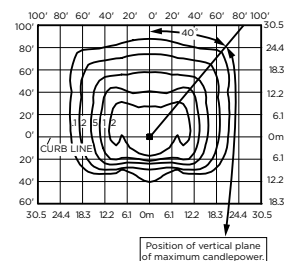
CSA Test Report #: 6449
ARE-EDG-4MB-**-12-E-UL-525-40K
Initial Delivered Lumens: 13,155



ARE-EDG-4MB-**-12-E-UL-525-40K
Mounting Height: 25' (7.6m) A.F.G.
Initial Delivered Lumens: 13,340
Initial FC at grade



CSA Test Report #: 6417
ARE-EDG-4MP-**-06-E-UL-700-40K
Initial Delivered Lumens: 9,989



ARE-EDG-4MP-**-12-E-UL-525-40K
Mounting Height: 25' (7.6m) A.F.G.
Initial Delivered Lumens: 15,640
Initial FC at grade

IES Files

To obtain an IES file specific to your project consult:
<http://www.cree.com/lighting/tools-and-support/exterior-ies-configuration-tool>

Lumen Output, Electrical, and Lumen Maintenance Data

Type IV Medium Distribution w/ BLS																
LED Count (x10)	5700K				4000K				System Watts 120-480V	TOTAL CURRENT					50K Hours Projected Lumen Maintenance Factor @ 15 °C (59 °F)***	
	Initial Delivered Lumens w/ BLS*	BUG Ratings** Per TM-15-II	Initial Delivered Lumens w/ Partial BLS*	BUG Ratings** Per TM-15-II	Initial Delivered Lumens w/ BLS*	BUG Ratings** Per TM-15-II	Initial Delivered Lumens w/ Partial BLS*	BUG Ratings** Per TM-15-II		120V	208V	240V	277V	347V		480V
350mA @ 25 °C (77 °F)																
06	4,959	B1 U0 G1	5,815	B1 U0 G1	4,776	B1 U0 G1	5,599	B1 U0 G1	66	0.52	0.31	0.28	0.26	0.20	0.15	93%
08	6,613	B1 U0 G2	7,753	B2 U0 G2	6,368	B1 U0 G2	7,466	B2 U0 G2	90	0.75	0.44	0.38	0.34	0.26	0.20	
10	8,246	B1 U0 G2	9,668	B2 U0 G2	7,941	B1 U0 G2	9,310	B2 U0 G2	110	0.92	0.53	0.47	0.41	0.32	0.24	
12	9,895	B1 U0 G2	11,601	B2 U0 G2	9,529	B1 U0 G2	11,172	B2 U0 G2	130	1.10	0.63	0.55	0.48	0.38	0.28	
14	11,471	B1 U0 G2	13,449	B2 U0 G2	11,046	B1 U0 G2	12,951	B2 U0 G2	158	1.32	0.77	0.68	0.62	0.47	0.35	
16	13,110	B1 U0 G2	15,370	B3 U0 G2	12,624	B1 U0 G2	14,801	B3 U0 G2	179	1.49	0.87	0.77	0.68	0.53	0.39	
20	16,388	B2 U0 G3	19,213	B3 U0 G3	15,781	B2 U0 G3	18,501	B3 U0 G2	220	1.84	1.06	0.93	0.83	0.64	0.47	
24	19,665	B2 U0 G3	23,056	B3 U0 G3	18,937	B2 U0 G3	22,202	B3 U0 G3	261	2.19	1.26	1.10	0.97	0.76	0.56	
525mA @ 25 °C (77 °F)																
04	4,682	B1 U0 G1	5,490	B1 U0 G1	4,509	B1 U0 G1	5,286	B1 U0 G1	70	0.58	0.34	0.31	0.28	0.21	0.16	92%
06	6,943	B1 U0 G2	8,140	B2 U0 G2	6,686	B1 U0 G2	7,839	B2 U0 G2	101	0.84	0.49	0.43	0.38	0.30	0.22	
08	9,258	B1 U0 G2	10,854	B2 U0 G2	8,915	B1 U0 G2	10,452	B2 U0 G2	133	1.13	0.66	0.58	0.51	0.39	0.28	
10	11,544	B1 U0 G2	13,535	B2 U0 G2	11,117	B1 U0 G2	13,034	B2 U0 G2	171	1.43	0.83	0.74	0.66	0.50	0.38	
12	13,853	B2 U0 G2	16,242	B3 U0 G2	13,340	B1 U0 G2	15,640	B3 U0 G2	202	1.69	0.98	0.86	0.77	0.59	0.44	
14	16,060	B2 U0 G3	18,829	B3 U0 G2	15,465	B2 U0 G2	18,131	B3 U0 G2	232	1.94	1.12	0.98	0.87	0.68	0.50	
16	18,354	B2 U0 G3	21,519	B3 U0 G3	17,674	B2 U0 G3	20,722	B3 U0 G3	263	2.21	1.27	1.11	0.97	0.77	0.56	
700mA @ 25 °C (77 °F)																
04	5,719	B1 U0 G2	6,705	B2 U0 G1	5,507	B1 U0 G1	6,457	B2 U0 G1	92	0.78	0.46	0.40	0.36	0.27	0.20	90%
06	8,481	B1 U0 G2	9,943	B2 U0 G2	8,167	B1 U0 G2	9,575	B2 U0 G2	134	1.14	0.65	0.57	0.50	0.39	0.29	

* Actual production yield may vary between -4 and +10% of initial delivered lumens.

** For more information on the IES BUG (Backlight-Uplight-Glare) Rating visit www.iesna.org/PDF/Erratas/TM-15-IIBUGRatingsAddendum.pdf.

*** For recommended lumen maintenance factor data see TD-13. Calculated L_{90} based on 6,000 hours LM-80-08 testing: > 150,000 hours.

ARE-EDG-3MB/3MP-DA

Cree Edge™ Area Luminaire – Type III Medium w/ Backlight Control – Direct Arm Mount

Product Description

Slim, low profile design minimizes wind load requirements. Luminaire sides are rugged cast aluminum with integral, weathertight LED driver compartments and high performance aluminum heat sinks. Convenient, interlocking mounting method. Mounting housing is rugged die cast aluminum and mounts to 3–6" (76–152mm) square or round pole. Luminaire is secured by two 5/16-18 UNC bolts spaced on 2" (51mm) centers.

Performance Summary

Utilizes BetaLED® Technology

Patented NanoOptic® Product Technology

Made in the U.S.A. of U.S. and imported parts

CRI: Minimum 70 CRI

CCT: 5700K (+ / - 500K) Standard, 4000K (+ / - 300K)

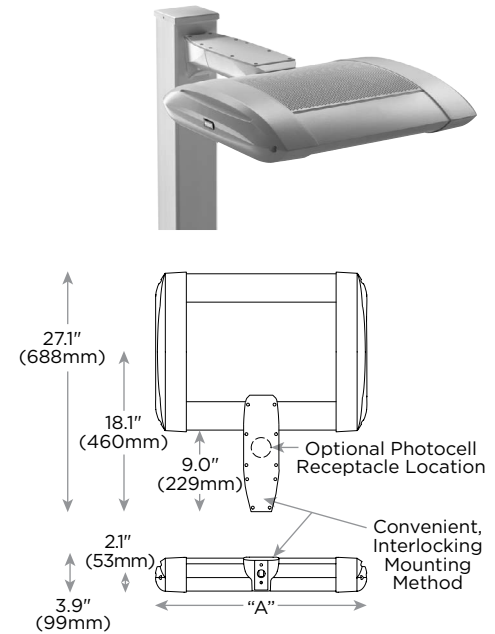
Limited Warranty†: 10 years on luminaire / 10 years on Colorfast DeltaGuard® finish

EPA and Weight: Reference EPA and Weight spec sheet

Accessories

Field Installed Accessories

XA-BRDSPK
Bird Spikes



LED Count (x10)	Dim. "A"
04	12.1" (306mm)
06	14.1" (357mm)
08	16.1" (408mm)
10	18.1" (459mm)
12	20.1" (510mm)
14	22.1" (560mm)
16	24.1" (611mm)
20	28.1" (713mm)
24	32.1" (814mm)

Ordering Information

Example: ARE-EDG-3MB-DA-04-E-UL-SV-350-OPTIONS

ARE-EDG		DA		E				
Product	Optic	Mounting	LED Count (x10)	Series	Voltage	Color Options	Drive Current	Options
ARE-EDG	3MB Type III Medium w/ BLS 3MP Type III Medium w/ Partial BLS	DA Direct Arm	04 06 08 10 12 14 16 20 24	E	UL Universal 120–277V UH Universal 347–480V 34 347V	SV Silver (Standard) BK Black BZ Bronze PB Platinum Bronze WH White	350* 350mA 525* 525mA 700** 700mA	40K 4000K Color Temperature - Color temperature per luminaire DIM 0–10V Dimming - Control by others - Refer to dimming spec sheet for details - Can't exceed specified drive current F Fuse - When code dictates fusing, use time delay fuse - Not available with all ML options. Refer to ML spec sheet for availability with ML options HL Hi / Low (175 / 350 / 525 Dual Circuit Input) - Refer to ML spec sheet for details - Sensor not included P Photocell - Not available with all ML options. Refer to ML spec sheet for availability with ML options - Must specify voltage other than UH R NEMA Photocell Receptacle - Not available with all ML options. Refer to ML spec sheet for availability with ML options - Photocell by others ML Multi-Level - Refer to ML spec sheet for details

† See www.cree.com/lighting/products/warranty for warranty terms

* Available on luminaires with 60–240 LEDs.

** Available on luminaires with 40–160 LEDs.

*** Available on luminaires with 40–60 LEDs.



Rev. Date: 09/27/13



Product Specifications

CONSTRUCTION & MATERIALS

- Slim, low profile, minimizing wind load requirements
- Luminaire sides are rugged die cast aluminum with integral, weathertight LED driver compartments and high performance heat sinks
- Convenient interlocking mounting method. Mounting housing is rugged die cast aluminum mounting to 3-6" (76-152mm) square or round pole, secured by two 5 / 16-18 UNC bolts spaced on 2" (51mm) centers
- Includes leaf / debris guard
- Exclusive Colorfast DeltaGuard® finish features an E-Coat epoxy primer with an ultra-durable powder topcoat, providing excellent resistance to corrosion, ultraviolet degradation and abrasion. Standard is silver. Bronze, black, white, and platinum bronze are also available

ELECTRICAL SYSTEM

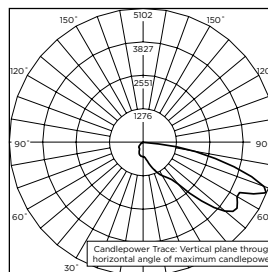
- **Input Voltage:** 120-277V or 347-480V, 50 / 60Hz, Class 1 drivers
- **Power Factor:** > 0.9 at full load
- **Total Harmonic Distortion:** < 20% at full load
- Integral weathertight electrical box with terminal strips (12Ga-20Ga) for easy power hookup
- Integral 10kV surge suppression protection standard
- To address inrush current, slow blow fuse or type C / D breaker should be used

REGULATORY & VOLUNTARY QUALIFICATIONS

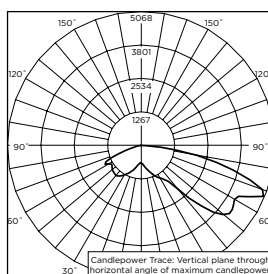
- cULus Listed
- Suitable for wet locations
- Enclosure rated IP66 per IEC 60529 when ordered without P or R options
- Consult factory for CE Certified products
- Certified to ANSI C136.31-2001, 3G bridge and overpass vibration standards
- 10kV surge suppression protection tested in accordance with IEEE / ANSI C62.41.2
- Luminaire and finish endurance tested to withstand 5,000 hours of elevated ambient salt fog conditions as defined in ASTM Standard B 117
- Product qualified on the DesignLights Consortium™ ("DLC") Qualified Products List ("QPL") when ordered without full backlight control shield
- Meets Buy American requirements within ARRA

Photometry

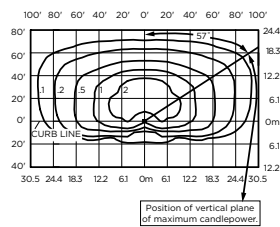
All published luminaire photometric testing performed to IESNA LM-79-08 standards by a NVLAP certified laboratory.



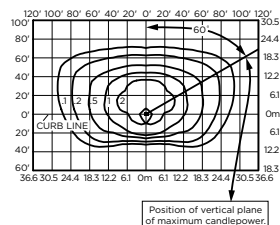
ITL Test Report #: 77235
STR-LWY-3MB--06-E-UL-700-40K
Initial Delivered Lumens: 7,998



CSA Test Report #: 6385
ARE-EDG-3MP--06-E-UL-700-40K
Initial Delivered Lumens: 9,619



ARE-EDG-3MB--12-E-UL-525-40K
Mounting Height: 25' (7.6m) A.F.G.
Initial Delivered Lumens: 12,420
Initial FC at grade



ARE-EDG-3MP--12-E-UL-525-40K
Mounting Height: 25' (7.6m) A.F.G.
Initial Delivered Lumens: 14,720
Initial FC at grade

IES Files

To obtain an IES file specific to your project consult:
<http://www.cree.com/lighting/tools-and-support/exterior-ies-configuration-tool>

Lumen Output, Electrical, and Lumen Maintenance Data

Type III Medium Distribution w/ BLS																
LED Count (x10)	5700K				4000K				System Watts 120-480V	TOTAL CURRENT					50K Hours Projected Lumen Maintenance Factor @ 15 °C (59 °F)***	
	Initial Delivered Lumens w/ BLS*	BUG Ratings** Per TM-15-II	Initial Delivered Lumens w/ Partial BLS*	BUG Ratings** Per TM-15-II	Initial Delivered Lumens w/ BLS*	BUG Ratings** Per TM-15-II	Initial Delivered Lumens w/ Partial BLS*	BUG Ratings** Per TM-15-II		120V	208V	240V	277V	347V		480V
350mA @ 25 °C (77 °F)																
06	4,617	B1 U0 G1	5,473	B1 U0 G2	4,446	B1 U0 G1	5,270	B1 U0 G2	66	0.52	0.31	0.28	0.26	0.20	0.15	93%
08	6,157	B1 U0 G2	7,297	B2 U0 G2	5,929	B1 U0 G2	7,026	B2 U0 G2	90	0.75	0.44	0.38	0.34	0.26	0.20	
10	7,677	B1 U0 G2	9,099	B2 U0 G2	7,393	B1 U0 G2	8,762	B2 U0 G2	110	0.92	0.53	0.47	0.41	0.32	0.24	
12	9,213	B1 U0 G2	10,919	B2 U0 G3	8,872	B1 U0 G2	10,514	B2 U0 G3	130	1.10	0.63	0.55	0.48	0.38	0.28	
14	10,680	B1 U0 G2	12,658	B2 U0 G3	10,285	B1 U0 G2	12,189	B2 U0 G3	158	1.32	0.77	0.68	0.62	0.47	0.35	
16	12,206	B1 U0 G3	14,466	B3 U0 G3	11,754	B1 U0 G3	13,930	B3 U0 G3	179	1.49	0.87	0.77	0.68	0.53	0.39	
20	15,257	B2 U0 G3	18,083	B3 U0 G3	14,692	B1 U0 G3	17,413	B3 U0 G3	220	1.84	1.06	0.93	0.83	0.64	0.47	
24	18,309	B2 U0 G3	21,699	B3 U0 G3	17,631	B2 U0 G3	20,896	B3 U0 G3	261	2.19	1.26	1.10	0.97	0.76	0.56	
525mA @ 25 °C (77 °F)																
04	4,359	B1 U0 G1	5,167	B1 U0 G2	4,198	B1 U0 G1	4,975	B1 U0 G2	70	0.58	0.34	0.31	0.28	0.21	0.16	92%
06	6,464	B1 U0 G2	7,662	B2 U0 G2	6,225	B1 U0 G2	7,378	B2 U0 G2	101	0.84	0.49	0.43	0.38	0.30	0.22	
08	8,619	B1 U0 G2	10,215	B2 U0 G2	8,300	B1 U0 G2	9,837	B2 U0 G2	133	1.13	0.66	0.58	0.51	0.39	0.28	
10	10,748	B1 U0 G2	12,739	B2 U0 G3	10,350	B1 U0 G2	12,267	B2 U0 G3	171	1.43	0.83	0.74	0.66	0.50	0.38	
12	12,898	B1 U0 G3	15,286	B3 U0 G3	12,420	B1 U0 G3	14,720	B3 U0 G3	202	1.69	0.98	0.86	0.77	0.59	0.44	
14	14,952	B2 U0 G3	17,721	B3 U0 G3	14,398	B1 U0 G3	17,065	B3 U0 G3	232	1.94	1.12	0.98	0.87	0.68	0.50	
16	17,088	B2 U0 G3	20,253	B3 U0 G3	16,455	B2 U0 G3	19,503	B3 U0 G3	263	2.21	1.27	1.11	0.97	0.77	0.56	
700mA @ 25 °C (77 °F)																
04	5,325	B1 U0 G2	6,311	B1 U0 G2	5,127	B1 U0 G2	6,077	B1 U0 G2	92	0.78	0.46	0.40	0.36	0.27	0.20	90%
06	7,896	B1 U0 G2	9,358	B2 U0 G2	7,603	B1 U0 G2	9,011	B2 U0 G2	134	1.14	0.65	0.57	0.50	0.39	0.29	

* Actual production yield may vary between -4 and +10% of initial delivered lumens.

** For more information on the IES BUG (Backlight-Uplight-Glare) Rating visit www.iesna.org/PDF/Erratas/TM-15-II-BugRatingsAddendum.pdf.

*** For recommended lumen maintenance factor data see TD-13. Calculated L_{90} based on 6,000 hours LM-80-08 testing: > 150,000 hours.

ARE-EDG-2M-DA

Cree Edge™ Area Luminaire – Type II Medium – Direct Arm Mount

Product Description

Slim, low profile design minimizes wind load requirements. Luminaire sides are rugged cast aluminum with integral, weathertight LED driver compartments and high performance aluminum heat sinks. Convenient, interlocking mounting method. Mounting housing is rugged die cast aluminum and mounts to 3–6" (76–152mm) square or round pole. Luminaire is secured by two 5/16-18 UNC bolts spaced on 2" (51mm) centers.

Performance Summary

Utilizes BetaLED® Technology

Patented NanoOptic® Product Technology

Made in the U.S.A. of U.S. and imported parts

CRI: Minimum 70 CRI

CCT: 5700K (+ / - 500K) Standard, 4000K (+ / - 300K)

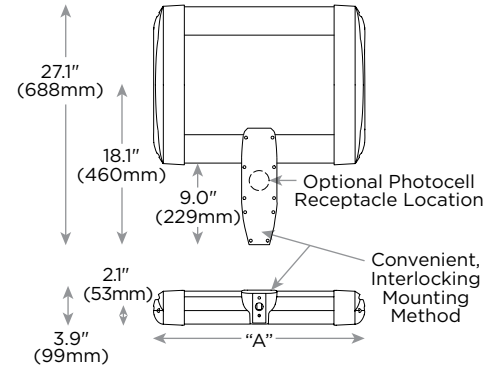
Limited Warranty†: 10 years on luminaire / 10 years on Colorfast DeltaGuard® finish

EPA and Weight: Reference EPA and Weight spec sheet

Accessories

Field Installed Accessories

XA-BRDSPK
Bird Spikes



LED Count (x10)	Dim. "A"
04	12.1" (306mm)
06	14.1" (357mm)
08	16.1" (408mm)
10	18.1" (459mm)
12	20.1" (510mm)
14	22.1" (560mm)
16	24.1" (611mm)
20	28.1" (713mm)
24	32.1" (814mm)

Ordering Information

Example: ARE-EDG-2M-DA-04-E-UL-SV-350-OPTIONS

ARE-EDG	2M	DA		E				
Product	Optic	Mounting	LED Count (x10)	Series	Voltage	Color Options	Drive Current	Options
ARE-EDG	2M Type II Medium	DA Direct Arm	04 06 08 10 12 14 16 20 24	E	UL Universal 120–277V UH Universal 347–480V 34 347V	SV Silver (Standard) BK Black BZ Bronze PB Platinum Bronze WH White	350* 350mA 525** 525mA 700*** 700mA	40K 4000K Color Temperature - Color temperature per luminaire DIM 0–10V Dimming - Control by others - Refer to dimming spec sheet for details - Can't exceed specified drive current F Fuse - When code dictates fusing, use time delay fuse - Not available with all ML options. Refer to ML spec sheet for availability with ML options HL Hi / Low (175 / 350 / 525 Dual Circuit Input) - Refer to ML spec sheet for details - Sensor not included P Photocell - Not available with all ML options. Refer to ML spec sheet for availability with ML options - Must specify voltage other than UH R NEMA Photocell Receptacle - Not available with all ML options. Refer to ML spec sheet for availability with ML options - Photocell by others ML Multi-Level - Refer to ML spec sheet for details

† See www.cree.com/lighting/products/warranty for warranty terms

* Available on luminaires with 60–240 LEDs.

** Available on luminaires with 40–160 LEDs.

*** Available on luminaires with 40–60 LEDs.



Rev. Date: 09/27/13



Product Specifications

CONSTRUCTION & MATERIALS

- Slim, low profile, minimizing wind load requirements
- Luminaire sides are rugged die cast aluminum with integral, weathertight LED driver compartments and high performance heat sinks
- Convenient interlocking mounting method. Mounting housing is rugged die cast aluminum mounting to 3–6" (76–152mm) square or round pole, secured by two 5 / 16-18 UNC bolts spaced on 2" (51mm) centers
- Includes leaf / debris guard
- Exclusive Colorfast DeltaGuard® finish features an E-Coat epoxy primer with an ultra-durable powder topcoat, providing excellent resistance to corrosion, ultraviolet degradation and abrasion. Standard is silver. Bronze, black, white, and platinum bronze are also available

ELECTRICAL SYSTEM

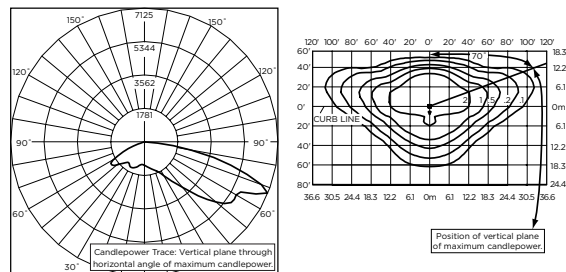
- **Input Voltage:** 120–277V or 347–480V, 50 / 60Hz, Class 1 drivers
- **Power Factor:** > 0.9 at full load
- **Total Harmonic Distortion:** < 20% at full load
- Integral weathertight electrical box with terminal strips (12Ga–20Ga) for easy power hookup
- Integral 10kV surge suppression protection standard
- To address inrush current, slow blow fuse or type C / D breaker should be used

REGULATORY & VOLUNTARY QUALIFICATIONS

- cULus Listed
- Suitable for wet locations
- Enclosure rated IP66 per IEC 60529 when ordered without P or R options
- Consult factory for CE Certified products
- Certified to ANSI C136.31-2001, 3G bridge and overpass vibration standards
- 10kV surge suppression protection tested in accordance with IEEE / ANSI C62.41.2
- Luminaire and finish endurance tested to withstand 5,000 hours of elevated ambient salt fog conditions as defined in ASTM Standard B 117
- Product qualified on the DesignLights Consortium™ ("DLC") Qualified Products List ("QPL") when ordered without full backlight control shield
- Meets Buy American requirements within ARRA

Photometry

All published luminaire photometric testing performed to IESNA LM-79-08 standards by a NVLAP certified laboratory.



CSA Test Report #: 6371
ARE-EDG-2M--06-E-UL-700-40K
Initial Delivered Lumens: 10,985

ARE-EDG-2M--12-E-UL-525-40K
Mounting Height: 25' (7.6m) A.F.G.
Initial Delivered Lumens: 17,710
Initial FC at grade

IES Files

To obtain an IES file specific to your project consult:
<http://www.cree.com/lighting/tools-and-support/exterior-ies-configuration-tool>

Lumen Output, Electrical, and Lumen Maintenance Data

Type II Medium Distribution												
LED Count (x10)	5700K		4000K		System Watts 120–480V	TOTAL CURRENT					50K Hours Projected Lumen Maintenance Factor @ 15 °C (59 °F)**	
	Initial Delivered Lumens*	BUG Ratings** Per TM-15-II	Initial Delivered Lumens*	BUG Ratings** Per TM-15-II		120V	208V	240V	277V	347V		480V
350mA @ 25 °C (77 °F)												
06	6,584	B2 U0 G2	6,340	B2 U0 G1	66	0.52	0.31	0.28	0.26	0.20	0.15	93%
08	8,779	B2 U0 G2	8,454	B2 U0 G2	90	0.75	0.44	0.38	0.34	0.26	0.20	
10	10,947	B2 U0 G2	10,542	B2 U0 G2	110	0.92	0.53	0.47	0.41	0.32	0.24	
12	13,137	B3 U0 G3	12,650	B2 U0 G2	130	1.10	0.63	0.55	0.48	0.38	0.28	
14	15,229	B3 U0 G3	14,665	B3 U0 G3	158	1.32	0.77	0.68	0.62	0.47	0.35	
16	17,405	B3 U0 G3	16,760	B3 U0 G3	179	1.49	0.87	0.77	0.68	0.53	0.39	
20	21,756	B3 U0 G3	20,950	B3 U0 G3	220	1.84	1.06	0.93	0.83	0.64	0.47	
24	26,107	B4 U0 G3	25,140	B3 U0 G3	261	2.19	1.26	1.10	0.97	0.76	0.56	
525mA @ 25 °C (77 °F)												
04	6,216	B2 U0 G1	5,986	B2 U0 G1	70	0.58	0.34	0.31	0.28	0.21	0.16	92%
06	9,218	B2 U0 G2	8,876	B2 U0 G2	101	0.84	0.49	0.43	0.38	0.30	0.22	
08	12,290	B2 U0 G2	11,835	B2 U0 G2	133	1.13	0.66	0.58	0.51	0.39	0.28	
10	15,326	B3 U0 G3	14,759	B3 U0 G3	171	1.43	0.83	0.74	0.66	0.50	0.38	
12	18,391	B3 U0 G3	17,710	B3 U0 G3	202	1.69	0.98	0.86	0.77	0.59	0.44	
14	21,321	B3 U0 G3	20,531	B3 U0 G3	232	1.94	1.12	0.98	0.87	0.68	0.50	
16	24,367	B3 U0 G3	23,464	B3 U0 G3	263	2.21	1.27	1.11	0.97	0.77	0.56	
700mA @ 25 °C (77 °F)												
04	7,593	B2 U0 G2	7,311	B2 U0 G2	92	0.78	0.46	0.40	0.36	0.27	0.20	90%
06	11,259	B2 U0 G2	10,842	B2 U0 G2	134	1.14	0.65	0.57	0.50	0.39	0.29	

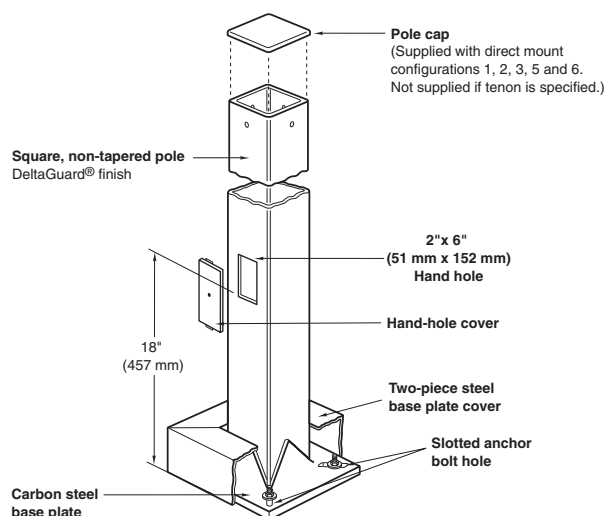
* Actual production yield may vary between -4 and +10% of initial delivered lumens.

** For more information on the IES BUG (Backlight-Uplight-Glare) Rating visit www.iesna.org/PDF/Erratas/TM-15-II-BugRatingsAddendum.pdf.

*** For recommended lumen maintenance factor data see TD-13. Calculated L_{90} based on 6,000 hours LM-80-08 testing; > 150,000 hours.

PS Crown-Weld® Square Straight Steel Poles

Beta Catalog Number:



Notes:

Catalog Number	Height (feet) x Width (inches) x Wall (inches)	Bolt Circle/Range (inches)	Bolt Size (inches)	Pole "EPA" Ratings Pole Base Wind Velocity								Mount Configuration*	Color Options†
				70	80	90	100	110	120	130	140		
PS3S10C*†	10 x 3 x 0.125	10/9.3-11	3/4	31.4	23.6	18.2	14.3	11.5	9.3	7.0	6.3	1 ■ Single ¹	BZ
PS3S15C*†	15 x 3 x 0.125	10/9.3-11	3/4	18.5	13.4	9.9	7.4	5.5	4.1	3.0	2.2	2 ■■ Twin @ 180° ¹	BK
PS3S20C*†	20 x 3 x 0.125	10/9.3-11	3/4	11.5	7.8	5.2	3.3	2.0	0.9	0.1	0.0		WH
PS4S10C*†	10 x 4 x 0.125	10/9.3-11	3/4	59.9	45.2	35.1	27.9	22.6	18.5	15.4	12.9	3 ■■ Twin @ 90° ¹	PB
PS4S12C*†	12 x 4 x 0.125	10/9.3-11	3/4	48.4	36.2	27.9	21.9	17.5	14.2	11.6	9.5		SV
PS4S15C*†	15 x 4 x 0.125	10/9.3-11	3/4	36.5	26.9	20.3	15.6	12.1	9.5	7.4	5.8	5 ■■■ Triple ¹	
PS4S17C*†	17 x 4 x 0.125	10/9.3-11	3/4	30.7	22.3	16.6	12.5	9.41	7.1	5.3	3.9		
PS4S20C*†	20 x 4 x 0.125	10/9.3-11	3/4	24.0	16.9	12.1	8.7	6.1	4.2	2.7	1.5	6 ■■■ Quad ¹	
PS4S22C*†	22 x 4 x 0.125	10/9.3-11	3/4	20.4	14.0	9.7	6.6	4.3	2.5	1.2	0.1		
PS4S25C*†	25 x 4 x 0.125	10/9.3-11	3/4	15.9	10.4	6.6	3.9	1.9	0.4	0.0	0.0	T Tenon ²	
PS4S25S*†	25 x 4 x 0.188	10/9.3-11	3/4	25.3	17.6	12.3	8.5	5.7	3.6	1.9	0.6		
PS4S27R*†	27 x 4 x 0.125	10/9.3-11	3/4	22.0	14.9	10.0	6.6	4.0	2.0	0.0	0.0		
PS4S30R*†	30 x 4 x 0.125	10/9.3-11	3/4	17.7	11.4	7.1	4.0	1.7	0.0	0.0	0.0		
PS4S30H*†	30 x 4 x 0.188	10/9.3-11	3/4	19.5	12.5	7.8	4.4	1.9	0.0	0.0	0.0		
PS5S25S*†	25 x 5 x 0.188	10/9.7-11.3	1	43.9	31.4	22.8	16.6	12.1	8.7	6.0	3.8		
PS5S30S*†	30 x 5 x 0.188	10/9.7-11.3	1	32.2	21.9	14.9	9.9	6.2	3.4	1.2	0.0		
PS6S30S*†	30 x 6 x 0.188	11.5/11.3-12.8	1	50.8	35.7	25.3	17.9	12.4	8.2	4.9	2.4		

Field-Installed Accessories



GFI Outlet Accessory - 120V

REC-GF1BZ	REC-GF1PB
REC-GF1BK	REC-GF1SV
REC-GF1WH	

1-Direct mount pole configuration; add prefix "2" to configuration numbers for fixtures with Fixed 20" mount (i.e. "21", "22", "23", "25", "26") Example PS6S30S21BZ

2-Order tenon separately

General Description

Non-tapered square steel poles are supplied with welded base with cover, four galvanized anchor bolts, masonite mounting template and a pole cap (except tenon mount). Each anchor bolt is provided with two washers and two nuts. Steel pole base has slotted holes. Per National Electrical Code requirements, pole is standard with a 2" x 6" (51 x 152 mm) hand hole, located 18" (457 mm) above bottom of pole base. A #10-32 stainless-steel weld stud with grounding lug is located inside pole, opposite hand hole; a hand hole cover is supplied but shipped separately. In addition, 4" x 27" and 4" x 30" poles include an internal 5/16" steel reinforced sleeve welded inside the bottom 24" of the pole, as well as a reinforcement welded around the hand hole for added strength.

Materials

Square, non-tapered pole of structural steel tubing (ASTM A 500); with a minimum yield strength of 46,000 p.s.i. Welded to a formed carbon steel base plate with a minimum yield strength of 36,000 p.s.i.

Finish

Exclusive Colorfast DeltaGuard™ finish features an E-Coat epoxy primer with an ultra-durable powder topcoat, providing excellent resistance to corrosion, ultraviolet degradation and abrasion. The finish is covered by our 7 year limited warranty.

Labels

Beta Lighting square steel poles meet or exceed National Electrical Code Requirements. In the US, Beta square poles are classified by Underwriters Laboratories Inc. for electrical ground bonding; in Canada, they are CSA certified for electrical ground bonding and structural strength.

Patents

US 5,820,255; 6,640,517; Patent pending

PS Crown-Weld® Square Straight Steel Poles

PS3S10C(a)BZ

10' (3.0 m) x 3" (76 mm)
 Wall thickness – 0.125" (3 mm)
 Base plate – 10" (254 mm) square x 0.50" (13 mm) thick
 Anchor bolts – 3/4"-10 x 18" (457 mm) + 3" (76 mm)
 Bolt circle diameter – 10" (254 mm) 9.3" – 11" (235 mm – 279 mm)
 Maximum fixture weight – 250 lbs. (114 Kg)
 Approximate shipping weight – 58 lbs. (26 Kg)

PS3S15C(a)BZ

15' (4.6 m) x 3" (76 mm)
 Wall thickness – 0.125" (3 mm)
 Base plate – 10" (254 mm) square x 0.750" (19 mm) thick
 Anchor bolts – 3/4"-10 x 18" (457 mm) + 3" (76 mm)
 Bolt circle diameter – 10" (254 mm) 9.3" – 11" (235 mm – 279 mm)
 Maximum fixture weight – 250 lbs. (114 Kg)
 Approximate shipping weight – 82 lbs. (37 Kg)

PS3S20C(a)BZ

20' (6.1 m) x 3" (76 mm)
 Wall thickness – 0.125" (3 mm)
 Base plate – 10" (254 mm) square x 0.750" (19 mm) thick
 Anchor bolts – 3/4"-10 x 18" (457 mm) + 3" (76 mm)
 Bolt circle diameter – 10" (254 mm) 9.3" – 11" (235 mm – 279 mm)
 Maximum fixture weight – 250 lbs. (114 Kg)
 Approximate shipping weight – 119 lbs. (54 Kg)

PS4S10C(a)BZ

10' (3.0 m) x 4" (102 mm)
 Wall thickness – 0.125" (3 mm)
 Base plate – 10" (254 mm) square x 0.750" (19 mm) thick
 Anchor bolts – 3/4"-10 x 18" (457 mm) + 3" (76 mm)
 Bolt circle diameter – 10" (254 mm) 9.3" – 11" (235 mm – 279 mm)
 Maximum fixture weight – 350 lbs. (159 Kg)
 Approximate shipping weight – 78 lbs. (35 Kg)

PS4S12C(a)BZ

12' (3.7 m) x 4" (102 mm)
 Wall thickness – 0.125" (3 mm)
 Base plate – 10" (254 mm) square x 0.750" (19 mm) thick
 Anchor bolts – 3/4"-10 x 18" (457 mm) + 3" (76 mm)
 Bolt circle diameter – 10" (254 mm) 9.3" – 11" (235 mm – 279 mm)
 Maximum fixture weight – 300 lbs. (136 Kg)
 Approximate shipping weight – 99 lbs. (45 Kg)

PS4S15C(a)BZ

15' (4.6 m) x 4" (102 mm)
 Wall thickness – 0.125" (3 mm)
 Base plate – 10" (254 mm) square x 0.750" (19 mm) thick
 Anchor bolts – 3/4"-10 x 30" (762 mm) + 3" (76 mm)
 Bolt circle diameter – 10" (254 mm) 9.3" – 11" (235 mm – 279 mm)
 Maximum fixture weight – 350 lbs. (159 Kg)
 Approximate shipping weight – 119 lbs. (54 Kg)

PS4S17C(a)BZ

17' (5.2 m) x 4" (102 mm)
 Wall thickness – 0.125" (3 mm)
 Base plate – 10" (254 mm) square x 0.750" (19 mm) thick
 Anchor bolts – 3/4"-10 x 30" (762 mm) + 3" (76 mm)
 Bolt circle diameter – 10" (254 mm) 9.3" – 11" (235 mm – 279 mm)
 Maximum fixture weight – 300 lbs. (136 Kg)
 Approximate shipping weight – 131 lbs. (59 Kg)

PS4S20C(a)BZ

20' (6.1 m) x 4" (102 mm)
 Wall thickness – 0.125" (3 mm)
 Base plate – 10" (254 mm) square x 0.750" (19 mm) thick
 Anchor bolts – 3/4"-10 x 30" (762 mm) + 3" (76 mm)
 Bolt circle diameter – 10" (254 mm) 9.3" – 11" (235 mm – 279 mm)
 Maximum fixture weight – 350 lbs. (159 Kg)
 Approximate shipping weight – 150 lbs. (68 Kg)

PS4S22C(a)BZ

22' (6.7 m) x 4" (102 mm)
 Wall thickness – 0.125" (3 mm)
 Base plate – 10" (254 mm) square x 0.750" (19 mm) thick
 Anchor bolts – 3/4"-10 x 30" (762 mm) + 3" (76 mm)
 Bolt circle diameter – 10" (254 mm) 9.3" – 11" (235 mm – 279 mm)
 Maximum fixture weight – 310 lbs. (141 Kg)
 Approximate shipping weight – 163 lbs. (74 Kg)

PS4S25C(a)BZ

25' (7.6 m) x 4" (102 mm)
 Wall thickness – 0.125" (5 mm)
 Base plate – 10" (254 mm) square x 0.750" (19 mm) thick
 Anchor bolts – 3/4"-10 x 30" (762 mm) + 3" (76 mm)
 Bolt circle diameter – 10" (254 mm) 9.3" – 11" (235 mm – 279 mm)
 Maximum fixture weight – 350 lbs. (159 Kg)
 Approximate shipping weight – 182 lbs. (83 Kg)

PS4S25S(a)BZ

25' (7.6 m) x 4" (102 mm)
 Wall thickness – 0.188" (5 mm)
 Base plate – 10" (254 mm) square x 0.750" (19 mm) thick
 Anchor bolts – 3/4"-10 x 30" (762 mm) + 3" (76 mm)
 Bolt circle diameter – 10" (254 mm) 9.3" – 11" (235 mm – 279 mm)
 Maximum fixture weight – 350 lbs. (159 Kg)
 Approximate shipping weight – 252 lbs. (114 Kg)

PS4S27R(a)BZ

27' (8.2 m) x 4" (102 mm)
 Wall thickness – 0.125" (3 mm)
 Base plate – 10" (254 mm) square x 0.750" (19 mm) thick
 Anchor bolts – 3/4"-10 x 30" (762 mm) + 3" (76 mm)
 Bolt circle diameter – 10" (254 mm) 9.3" – 11" (235 mm – 279 mm)
 Maximum fixture weight – 280 lbs. (127 Kg)
 Approximate shipping weight – 232 lbs. (105 Kg)

PS4S30R(a)BZ

30' (9.1 m) x 4" (102 mm)
 Wall thickness – 0.125" (3 mm)
 Base plate – 10" (254 mm) square x 0.750" (19 mm) thick
 Anchor bolts – 3/4"-10 x 30" (762 mm) + 3" (76 mm)
 Bolt circle diameter – 10" (254 mm) 9.3" – 11" (235 mm – 279 mm)
 Maximum fixture weight – 315 lbs. (143 Kg)
 Approximate shipping weight – 301 lbs. (137 Kg)

PS4S30H(a)BZ

30' (9.1 m) x 4" (102 mm)
 Wall thickness – 0.188" (5 mm)
 Base plate – 10" (254 mm) square x 0.750" (19 mm) thick
 Anchor bolts – 3/4"-10 x 30" (762 mm) + 3" (76 mm)
 Bolt circle diameter – 10" (254 mm) 9.3" – 11" (235 mm – 279 mm)
 Maximum fixture weight – 340 lbs. (155 Kg)
 Approximate shipping weight – 337 lbs. (153 Kg)

PS5S25S(a)BZ

25' (7.6 m) x 5" (127 mm)
 Wall thickness – 0.188" (5 mm)
 Base plate – 10" (254 mm) square x 0.750" (19 mm) thick
 Anchor bolts – 1"-8 x 36" (914 mm) + 4" (102 mm)
 Bolt circle diameter – 10" (254 mm) 9.7" – 11.3" (248 mm – 287 mm)
 Maximum fixture weight – 450 lbs. (204 Kg)
 Approximate shipping weight – 320 lbs. (145 Kg)

PS5S30S(a)BZ

30' (9.1 m) x 5" (127 mm)
 Wall thickness – 0.188" (5 mm)
 Base plate – 10" (254 mm) square x 0.750" (19 mm) thick
 Anchor bolts – 1"-8 x 36" (914 mm) + 4" (102 mm)
 Bolt circle diameter – 10" (254 mm) 9.7" – 11.3" (248 mm – 287 mm)
 Maximum fixture weight – 375 lbs. (170 Kg)
 Approximate shipping weight – 379 lbs. (172 Kg)

PS6S30S(a)BZ

30' (9.1 m) x 6" (152 mm)
 Wall thickness – 0.188" (5 mm)
 Base plate – 12" (305 mm) square x 1" (25 mm) thick
 Anchor bolts – 1"-8 x 36" (914 mm) + 4" (102 mm)
 Bolt circle diameter – 11.5" (292 mm) 11.3" – 12.8" (286 mm – 324 mm)
 Maximum fixture weight – 525 lbs. (238 Kg)
 Approximate shipping weight – 457 lbs. (207 Kg)

