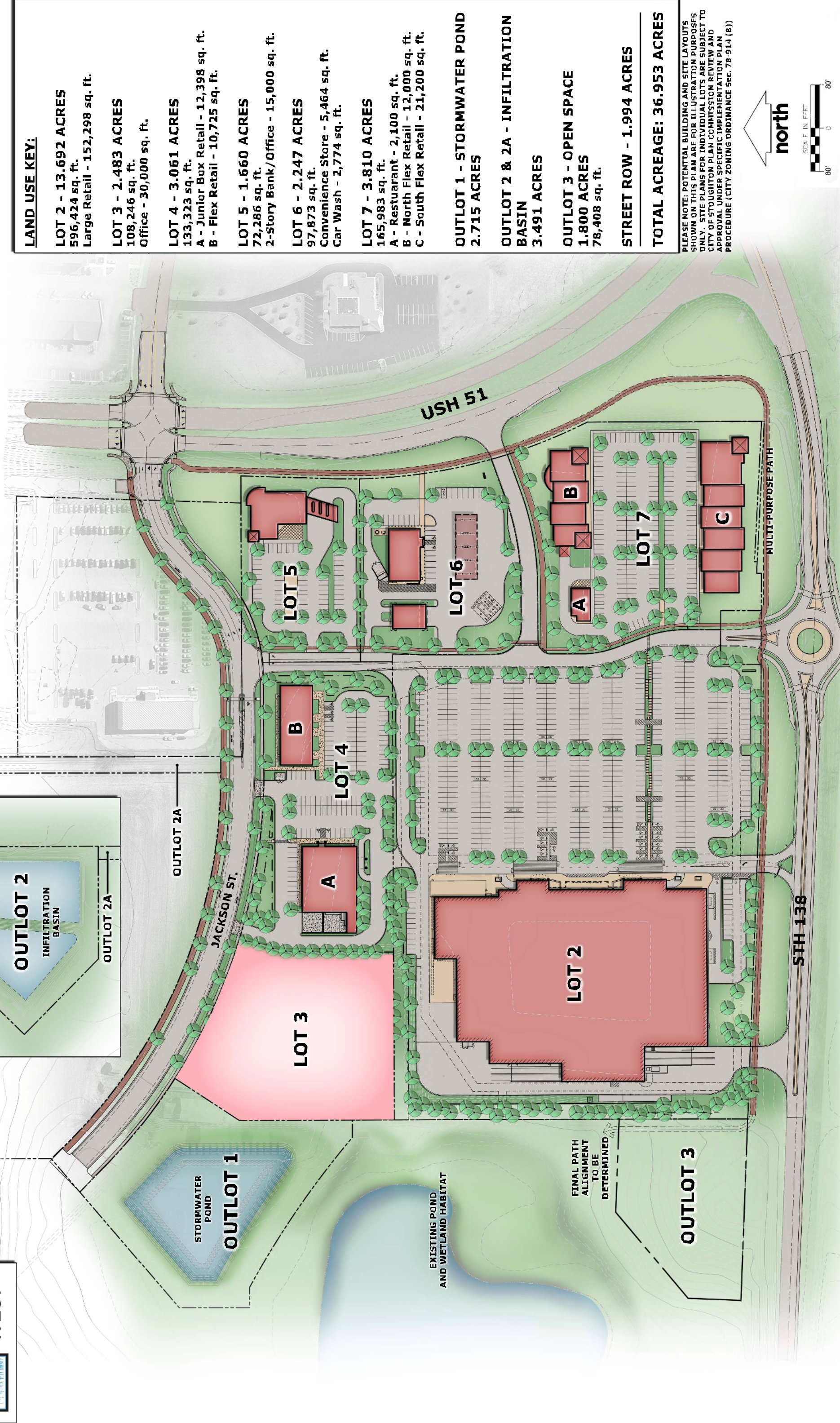


**KETTLE PARK WEST COMMERCIAL CENTER
MASTER PLAN
10-29-2014**



LAND USE KEY:

- LOT 2 - 13.692 ACRES**
596,424 sq. ft.
Large Retail - 152,298 sq. ft.
- LOT 3 - 2.483 ACRES**
108,246 sq. ft.
Office - 30,000 sq. ft.
- LOT 4 - 3.061 ACRES**
133,323 sq. ft.
A - Junior Box Retail - 12,398 sq. ft.
B - Flex Retail - 10,725 sq. ft.
- LOT 5 - 1.660 ACRES**
72,286 sq. ft.
2-Story Bank/Office - 15,000 sq. ft.
- LOT 6 - 2.247 ACRES**
97,873 sq. ft.
Convenience Store - 5,464 sq. ft.
Car Wash - 2,774 sq. ft.
- LOT 7 - 3.810 ACRES**
165,983 sq. ft.
A - Restaurant - 2,100 sq. ft.
B - North Flex Retail - 12,000 sq. ft.
C - South Flex Retail - 21,200 sq. ft.
- OUTLOT 1 - STORMWATER POND**
2.715 ACRES
- OUTLOT 2 & 2A - INFILTRATION BASIN**
3.491 ACRES
- OUTLOT 3 - OPEN SPACE**
1.800 ACRES
78,408 sq. ft.
- STREET ROW - 1.994 ACRES**
- TOTAL ACREAGE: 36.953 ACRES**

PLEASE NOTE: POTENTIAL BUILDING AND SITE LAYOUTS SHOWN ON THIS PLAN ARE FOR ILLUSTRATION PURPOSES ONLY. SITE PLANS FOR INDIVIDUAL LOTS ARE SUBJECT TO CITY OF STOUTINGTON PLAN COMMISSION REVIEW AND APPROVAL UNDER SPECIFIC IMPLEMENTATION PLAN PROCEDURE (CITY ZONING ORDINANCE Sec. 78-914 (B))

