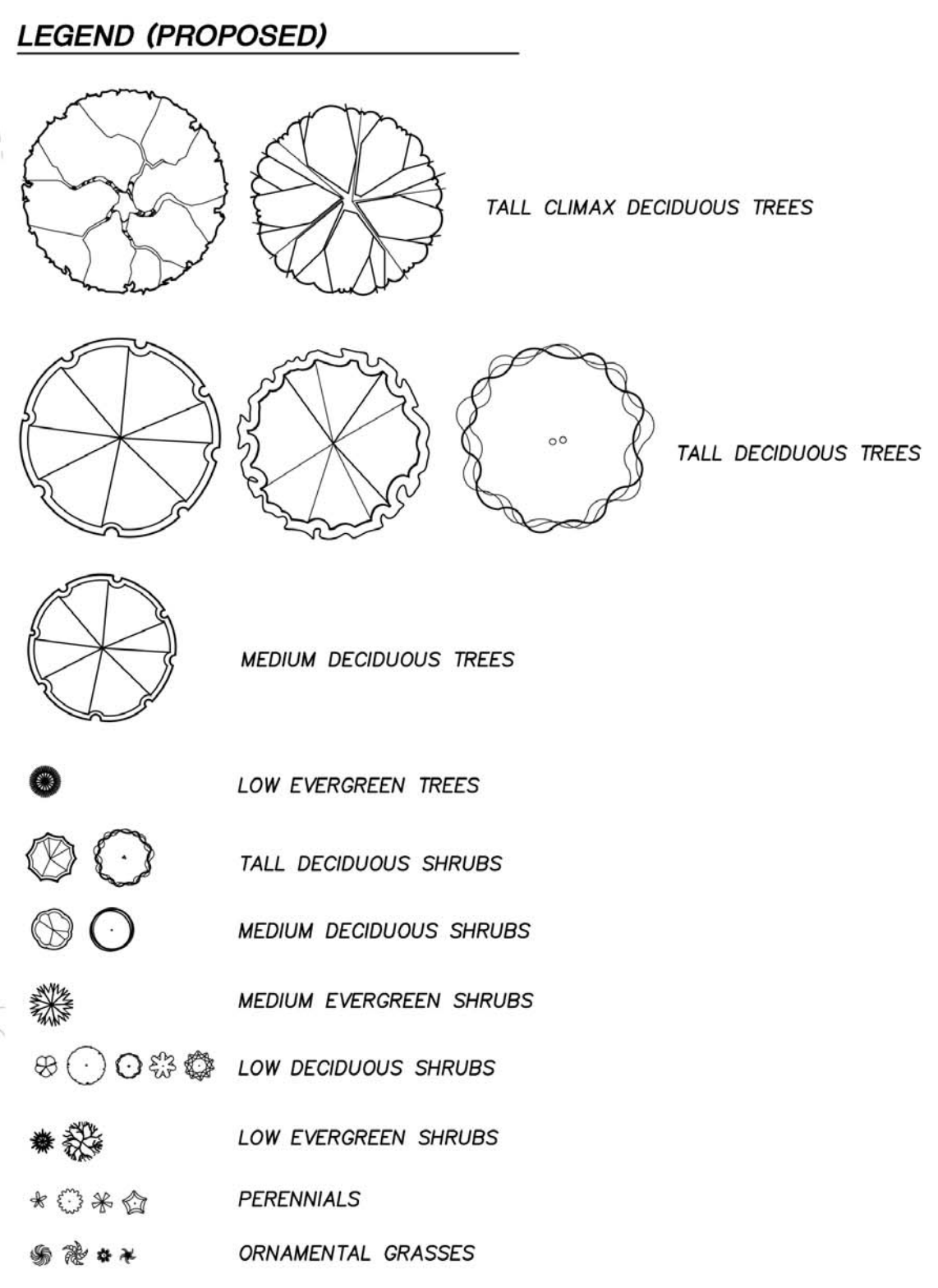
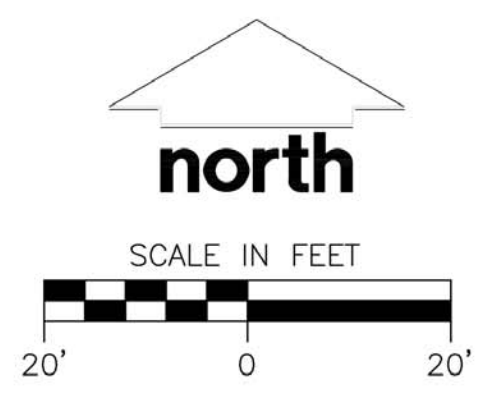
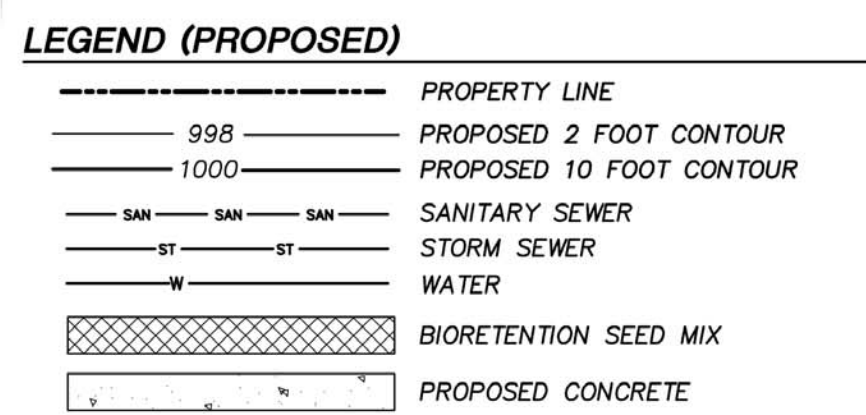


File: J:\2009\093951\dwg\Private Lot Improvements Lot 6\09-3951 Landscape Lot 6.dwg Layout: L1-Landscape Plan User: kyaska Plotted: Jul 10, 2014 - 9:49am Xref's:



LANDSCAPE PLANT LIST

| SYM | QTY. | COMMON NAME | BOTANICAL NAME | SIZE | ROOT | LS POINTS | TOTAL POINTS | |
|------------------------------------|------|---|---|--------------|-----------|-----------|---------------------|-------------|
| TALL CLIMAX DECIDUOUS TREES | | | | | | | | |
| SWO | 3 | *Pin Oak | QUERCUS palustris | 2" Cal. | B&B | 75 | 225 | |
| GB | 3 | *Autumn Gold Ginkgo | GINKGO biloba 'Autumn Gold' | 2" Cal. | B&B | 75 | 225 | |
| TALL DECIDUOUS TREES | | | | | | | | |
| OG | 3 | *October Glory Red Maple | ACER rubrum 'October Glory' | 2" Cal. | B&B | 30 | 90 | |
| AS | 3 | *Sugar Maple | ACER saccharinum | 2" Cal. | B&B | 30 | 90 | |
| GL | 3 | *Greenspire Littleleaf Linden | TILIA cordata 'Greenspire' | 2" Cal. | B&B | 30 | 90 | |
| MEDIUM DECIDUOUS TREES | | | | | | | | |
| PF | 7 | *Spring Snow Crabapple | MALUS 'Spring Snow' | 2" Cal. | B&B | 15 | 105 | |
| LOW EVERGREEN TREES | | | | | | | | |
| HA | 15 | *Hornstrup Arborvitae | THUJA occidentalis 'Hornstrup' | 3" Min. Ht. | B&B | 12 | 180 | |
| TALL DECIDUOUS SHRUBS | | | | | | | | |
| RD | 7 | *Redosier Dogwood | CORNUS sericea | 36" Min. Ht. | # 3 Cont. | 5 | 35 | |
| AWV | 1 | *Arrowwood Viburnum | VIBURNUM dentatum | 36" Min. Ht. | # 3 Cont. | 5 | 5 | |
| MEDIUM DECIDUOUS SHRUBS | | | | | | | | |
| SRV | 23 | *Spring Red Compact Cranberrybush Vib. | VIBURNUM trilobum 'Spring Red' | 24" Min. Ht. | # 3 Cont. | 3 | 69 | |
| SWN | 8 | *Summer Wine Ninebark | PHYSCARPUS opulifolius 'Seward Summer Wine' | 24" Min. Ht. | # 3 Cont. | 3 | 24 | |
| MEDIUM EVERGREEN SHRUBS | | | | | | | | |
| SG | 6 | *Sea Green Juniper | JUNIPERUS chinensis 'Sea Green' | 18" Min. Ht. | # 3 Cont. | 5 | 30 | |
| LOW DECIDUOUS SHRUBS | | | | | | | | |
| KDD | 25 | *Kelsey's Dwarf Redosier Dogwood | CORNUS sericea 'Kelsey' | 18" Min. Ht. | # 3 Cont. | 1 | 25 | |
| GL | 5 | *Gro-Low Fragrant Sumac | RHUS aromatica 'Gro-Low' | 18" Min. Ht. | # 3 Cont. | 1 | 5 | |
| KO | 2 | *Knock Out Rose | ROSA 'RADrazz' | 18" Min. Ht. | # 3 Cont. | 1 | 2 | |
| PD | 8 | *First Edition's Little Devil Ninebark | PHYSCARPUS opulifolius 'Donna May' | 18" Min. Ht. | # 3 Cont. | 1 | 8 | |
| VO | 6 | *Little Henry Dwarf Virginia Sweetspire | ITEA virginica 'Little Henry' | 18" Min. Ht. | # 3 Cont. | 1 | 6 | |
| LOW EVERGREEN SHRUBS | | | | | | | | |
| HJ | 15 | *Wisconsin Juniper | JUNIPERUS horizontalis 'Wisconsin' | 12" Min. Ht. | # 3 Cont. | 3 | 45 | |
| PP | 1 | *Globe Blue Spruce | PICEA pungens 'Glaucoboa' | 12" Min. Ht. | # 3 Cont. | 3 | 3 | |
| PERENNIALS | | | | | | | | |
| HO | 16 | *Stella D'Oro Daylily | HEMEROCALLIS 'Stella D'Oro' | 10 - 12" Ht. | # 1 Cont. | 0 | 0 | |
| RS | 15 | *Russian Sage | PEROVSKIA atriplicifolia | 10 - 12" Ht. | # 1 Cont. | 0 | 0 | |
| PL | 26 | *Little Spire Russian Sage | PEROVSKIA atriplicifolia 'Little Spire' | 10 - 12" Ht. | # 1 Cont. | 0 | 0 | |
| RF | 17 | *Black Eyed Susan | RUDEBECKIA hirta 'Goldstrum' | 10 - 12" Ht. | # 1 Cont. | 0 | 0 | |
| ORNAMENTAL GRASSES | | | | | | | | |
| KF | 6 | *Karl Foerster Feather Reed Grass | CALAMAGROSTIS x acutiflora 'Karl Foerster' | 10 - 12" Ht. | # 1 Cont. | 0 | 0 | |
| LB | 103 | *Little Bluestem | SCHIZACHYRIUM scoparium | 10 - 12" Ht. | # 1 Cont. | 0 | 0 | |
| PR | 11 | *Prairie Dropseed | SPOROBOLOUS heterolepis | 4 1/2' | # 1 Cont. | 0 | 0 | |
| SSG | 10 | *Northwind Swain Grass | PANICUM virgatum 'Northwind' | 10 - 12" Ht. | # 1 Cont. | 0 | 0 | |
| | | | | | | | Total Points | 1262 |
| *Native plant to Wisconsin | | | | | | | | |

- GENERAL NOTES:**
- REFER TO THE EXISTING CONDITIONS SURVEY FOR EXISTING CONDITIONS NOTES AND LEGEND.
 - ALL WORK IN THE ROW SHALL BE IN ACCORDANCE WITH THE CITY OF STOUGHTON STANDARD SPECIFICATIONS FOR PUBLIC WORKS CONSTRUCTION.
 - JSD SHALL BE HELD HARMLESS AND DOES NOT WARRANT ANY DEVIATIONS BY THE OWNER/CONTRACTOR FROM THE APPROVED CONSTRUCTION PLANS THAT MAY RESULT IN DISCIPLINARY ACTIONS BY ANY OR ALL REGULATORY AGENCIES.
 - DRAWING FOR REVIEW - NOT FOR CONSTRUCTION UNLESS OTHERWISE NOTED IN THE TITLE BLOCK.
 - THE LANDSCAPE CONTRACTOR SHALL COORDINATE ALL FINE GRADING AND TOPSOILING WITH GENERAL CONTRACTOR.
 - REFER TO SHEET L-2.0 FOR ADDITIONAL DETAILS, NOTES AND SPECIFICATION INFORMATION INCLUDING MATERIALS, GUARANTEE AND EXECUTION RELATED TO LANDSCAPE PLAN.

KWIK TRIP

STORES

KWIK STAR

STORES

KWIK TRIP, Inc.
P.O. BOX 2107
1626 OAK STREET
LACROSSE, WI 54602-2107
PH. (608) 781-8988
FAX (608) 781-8960

JSD Professional Services, Inc.
Engineers • Surveyors • Planners
MADISON REGIONAL OFFICE
161 HORIZON DRIVE SUITE 101
VERONA, WI 53590
608.848.5500 PHONE | 608.848.2255 FAX
MADISON | MILWAUKEE | KENOSHA

LANDSCAPE PLAN

CONVENIENCE STORE

| NO. | DATE | DESCRIPTION |
|-----|----------|------------------|
| 1 | 12-20-13 | PRELIMINARY PLAN |
| 2 | 3-31-14 | SIP SUBMITTAL |
| 3 | 5-30-14 | SIP RESUBMITTAL |
| 4 | 07-11-14 | SIP RESUBMITTAL |

DRAWN BY: KJY
SCALE: 1" = 20'
PROJ. NO.: 09-3951
DATE: 07-11-14
SHEET: L1