

Steven A. Kieckhafer, AIA – Partner in Charge, Project Manager

Education

Graduate Degree Coursework
University of Wisconsin - Milwaukee 1994
B.S. Architectural Studies
University of Wisconsin - Milwaukee 1990

References

Stoughton Area School District
Dennis Barkenhagen, Facilities Director
608 877-5071

Registration

Wisconsin – A-8378
Texas – 17847
Indiana – AR-10600178

Professional Associations

American Institute of Architects
Council of Educational Facility Planners
International

Civic Projects

City of Franklin*
Community Center Study
City of Madison - Water Utility Study*
Madison Fire Station No. 11
Madison Fire Station No. 12
Madison Police Department South and West
District Station*
Sun Prairie City Hall
Sun Prairie EMS Master Plan
Sun Prairie Fire Station No. 1
Sun Prairie Police Department
Safety and Weight Enforcement Facility
Madison
Beloit
Village of DeForest*
DeForest Area Public Library*
Village of Waunakee*
Community Center Study

Education Projects

Evansville Community School District
Franklin Public Schools
Country Dale Elementary School*
Ben Franklin Elementary School*
Franklin High School
Jefferson School District

** indicates work completed while with another firm*



Steven A. Kieckhafer, AIA, Middleton, brings 22 years of architectural and project management experience to PRA. Mr. Kieckhafer focuses on the project management of facilities completed in PRA's Madison office.

Similar Project Experience

- Madison Fire Station No. 11
- Madison Fire Station No. 12
- Sun Prairie Fire Station No. 1
- Sun Prairie EMS Master Plan



Madison Fire Station No. 12



Madison Fire Station No. 11

Education Projects (continued)

Kenosha Unified School District*
 Somers Elementary School*
 Stocker Elementary School*
 Pleasant Prairie Elementary*
Kewaunee School District*
 Kewaunee K-8 School*
Marshall School District*
 Marshall Early Childhood Center*
Madison Area Technical College
Middleton-Cross Plains Area School District
Monona Grove School District*
Stone Bank School District*
Stoughton Area School District
Sun Prairie Area School District*
Waterloo School District*
Waunakee Community School District
Wisconsin Rapids Public Schools
 Lincoln High School
 East Jr. High School
 West Jr. High School
 14 Elementary School Buildings

Corporate Projects

CUNA Mutual Group
 CUNA and Affiliates
Hausmann Insurance-Madison*
McFarland State Bank
North Central States Regional Council of
 Carpenters
 Madison and Kaukauna
Tribeca Village

* indicates work completed while with another firm

Education

Bachelor of Science in Architecture, 2000
University of Wisconsin - Milwaukee
Masters in Architecture, 2002
University of Wisconsin - Milwaukee

References

City of Sun Prairie
Mr. Pat Cannon, City Administrator
608 825-1193
Allamakee Community School District
Mr. Dave Herold, Superintendent
563 568-3409

Affiliations

American Institute of Architects

Registration

Wisconsin Architect - A-10210
NCARB

Civic Projects

City of Sun Prairie Community Service Building
Jack Russell Memorial Library
Oconomowoc Fire Station No. 2
Walworth County Government Building and Judicial Center
Waukesha Fire Station No. 1
Village of Waterford Fire Station No. 2

Corporate Projects

The Horton Group
Mortara Instrument
Stone House Development
West Bend Mutual Insurance

Education Projects

Allamakee School District
Elmbrook School District
Germantown School District
Hamilton School District
Madison Area Technical College
Milton School District
Mukwonago Area School District
New Berlin Public Schools
Slinger School District



Brian has been with Plunkett Raysich Architects since 2000 and was promoted to Architect in 2007. He currently resides in Shorewood and has been a critic for design classes for the School of Architecture at UW-Milwaukee.

Similar Project Experience

- Oconomowoc Fire Station No. 2
- Waukesha Fire Station No. 1
- Village of Waterford Fire Station No. 2
- Sun Prairie Community Service Building
- Madison Area Technical College Protective Services
- Walworth County Government Building and Judicial Center



Waukesha Fire Station



Sun Prairie Community Services Building



Waterford Fire Station No. 2



Oconomowoc Fire Station No. 2

Education

Associates Degree - Architectural Design
Madison Area Technical College

References

Stoughton Area School District
Dennis Barkenhagen, Facilities Director
608 877-5071

School District of LaCrosse
Joe Ledvina, Associate Supervisor of
Building and Grounds
608 789-7627

Municipal Projects

City of Franklin*
City of Madison Fire Station No. 12
City of Madison Tenney Park Pavilion
City of Madison Water Utility*
Madison Police Department - South Station*
Madison Police Department - West Station*
Village of DeForest - DeForest Public Library

Corporate Projects

100 Harborview Plaza
CUNA Mutual Group
International Building Upgrades
Northern Wisconsin Regional Council of
Carpenters
Roundy's Pick N Save
Madison
Maple Grove
T. Wall Properties
301 S. Westfield Remodel
Midwest Tech Office Building
Tri-North Builders Corporate Office

Education Projects

DeForest High School*
DeForest Area School District
Athletic Field Upgrades
Evansville Community School District*
Franklin Public Schools
La Crosse School District
Madison College
Commercial Avenue Renovations
Reedsburg Campus Remodel
Truax Campus Renovations
West Campus Renovations
Madison Metropolitan School District
Aldo Leopold Elementary School
East High School Food Lab, Auditorium and
Bleachers

**Indicates work completed while with another firm*



As a project specialist, Andy will work with the project manager and team to develop a complete set of construction documents for the project.

Similar Project Experience

- Madison Police Department
- City of Madison Fire Station No. 12
- City of Madison Tenney Park Pavilion



Madison Fire Station No. 12

Education Projects (continued)

- Memorial High School Food Lab
- Sandburg Elementary School
- Stoner Prairie Elementary School
- West High School Pool Study
- Middleton Cross Plains Area School District
 - Elm Lawn Elementary School
 - Northside Elementary School
 - Pool Renovations
 - West Middleton Elementary School
- School District of LaCrosse
- School District of New Glarus
 - District Study
 - Elementary School Renovation
 - Middle School Addition
- Stoughton Area School District
 - Accessibility Review
 - Bus Garage
 - Classroom Renovations
 - High School Renovations
 - Kegonsa Elementary School Renovations
 - River Bluff Renovations
- Sun Prairie Area School District*
- Verona Area School District
- Wisconsin Rapids School District

Religious Projects

- First Presbyterian Church, Oregon
- Holy Cross Lutheran School and School
- Martin Luther College Chapel

Healthcare Projects

- Gundersen Lutheran Sleep Disorder Center
- Meriter Hospital Women's and Infants'
 - Pavilion
- Richland Center Dialysis
- Riverview Hospital
 - Wound Healing Center
- University of Wisconsin Health
 - Administrative Services Building

Residential/Long-Term Care Projects

- Bethel Homes & Services - Maplewood
 - Terrace
- Evansville Manor RCAC
- Hillsboro Community RCAC
- Maplewood Terrace
- Morrow Memorial Home and Apartments
- Our House RCAC and CBRF
- William S. Middleton VA Hospital
 - Community Living / Short Stay Unit

Education

Associates Degree in Interior Design

References

City of Sun Prairie

Mr. Patrick Cannon, City Administrator
608 825-1193

Oak Creek Community Center

Mr. Rich Duchniak, Executive Director
414 768-5840

Civic Projects

Cedarburg Police Department

City of Oak Creek Civic Center

City of Sun Prairie West Side Community
Services Building

Mukwonago Fire Station

Waukesha Fire Station No. 2

West Allis Fire Department and
Administration Building

Healthcare Projects

Aspirus Wausau Hospital

Ambulatory Care Center
NICU

Aurora Medical Center

Community Memorial Hospital,

Covenant Healthcare

Covenant Rawson Medical

Elmbrook Memorial Hospital

Fort Atkinson Dialysis Center

Gundersen Lutheran Sleep Lab

Madison Medical Complex

Meriter Hospital – NICU

Oakbrook Medical Complex

Purity Dialysis Centers (Moreland Medical)

St. Francis Health Care – Terrace at
St. Francis

St. Joseph's Community Hospital of
West Bend

St. Mary's Physicians Office

St. Mary's Sleep Lab

Corporate

Advantage Bank Headquarters

Badger Meter, Inc.

Bergin Plumbing, Inc.

First National Bank of Hartford

Godfrey & Kahn, S.C.

Manpower International - Cafeteria

South Shore YMCA



Paulette has been with Plunkett Raysich Architects for over eight years and enjoys the diversity of working with our various studios. She is an active member in IIDA. She and her family reside in Oak Creek and when not working, she enjoys keeping busy with creative projects around the house.

Similar Project Experience

- Cedarburg Police Station
- West Allis Fire Department and Administration Building
- Waukesha Fire Station No. 2
- Oak Creek Community Center



*Cedarburg Police
Department*



*Sun Prairie Community
Service Building*



West Allis Administration



*Waukesha Fire Station
No. 1*



Project Description:

Located on a prominent site in historic downtown Beaver Dam, a new Police Station and Municipal Court fosters civic pride. This facility replaces an existing and outmoded 12,000 sq. ft. police department within City Hall. The City of Beaver Dam selected PRA as the design architect, in association with MSA Professional Services, Inc. to develop the project on a reclaimed site adjacent to the Dodge County Historical Society and Museum. The state-of-the-art 30,000 sq. ft. station provides increased space for all operations of the department, especially intake, interview, squad and weapons areas. Efficient operations, safety and security are paramount to the building's function, and are thoughtfully integrated throughout. Unique to the project is a publicly accessible 'safe room' and the first municipal court designed under the new state statute requiring separation of court and police functions. Together, these complex requirements are achieved within a welcoming composition of locally quarried stone, brick, glass and distinctive roof forms. The building is designed to complement the historic neighborhood and illustrate the City's commitment to sustainable design.



Scope:

New 30,000 sq. ft. police department and municipal court facility

Owner:

City of Beaver Dam
205 S. Lincoln Avenue
Beaver Dam, WI 53916
Dan Schubert, Deputy Chief of Police
920 356-2557



Sun Prairie West Side Community Service Building – Sun Prairie, WI



Project Description:

On the fringe of Sun Prairie's west side, the new 54,000 sq. ft. community service building stretches across the agricultural landscape. Completed in May 2007, this pedestrian-oriented design fosters a sense of civic importance without being pretentious or stodgy. Its footprint conveys qualities of both permanence and lightness with a planer composition of brick, stone, aluminum, and glass. The City's fire, police and parks departments and emergency medical services (EMS) all share the boomerang-shaped facility, which is anchored by a voluminous 5,000 sq. ft. community room. In addition to office space for each department, a wide range of program elements includes an apparatus room, gear storage, watch room, and day room for the fire department, as well as sleeping quarters for the EMS team and a large sally port and holding rooms for the police department.

Scope:

New community service building

Owner:

City of Sun Prairie
2598 West Main Street
Sun Prairie, WI
Patrick Cannon, City Administrator
608 825-1193





Project Description:

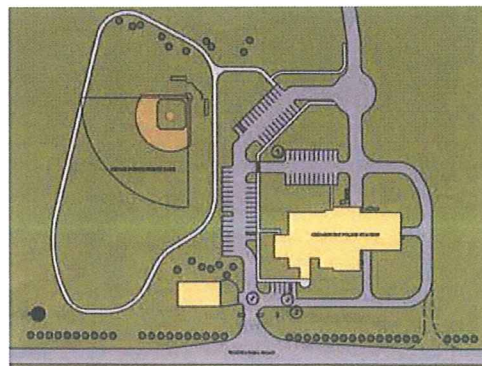
The City of Cedarburg hired Plunkett Raysich Architects to complete a conceptual site and design report for a 22,000 sq. ft. police station and 4.5 acre park. The City then hired Plunkett Raysich Architects to complete the design and construction of Cedar Point North Park and their new police station. The new station features a multi-purpose training/community/municipal courtroom, general administrative office, communications room and dispatch center. Additional features include a workout room, a locker room, an evidence processing room with adjacent property/evidence storage, booking area with five interview rooms, 5,362 sq. ft. foot vehicle storage garage with drive-thru sally port, vehicle impound, bike storage and an equipment/storage mezzanine. The park features a youth T-ball field, shared parking with the police station and a one-third mile asphalt walking path.

Scope:

New police department

Owner:

City of Cedarburg
W63 N645 Washington Avenue
Cedarburg, WI 53012
Thomas Frank, Chief of Police
262 375-7620





Project Description:

Starting as a space needs study, this project consists of remodeling office space for the police department dispatcher, village manager clerk, board room and the department of public works. The entire building is handicap accessible, including a new lift to provide access for the board room.

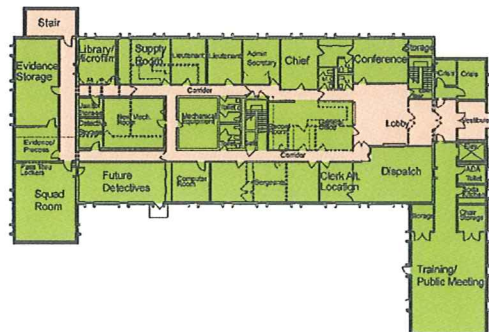
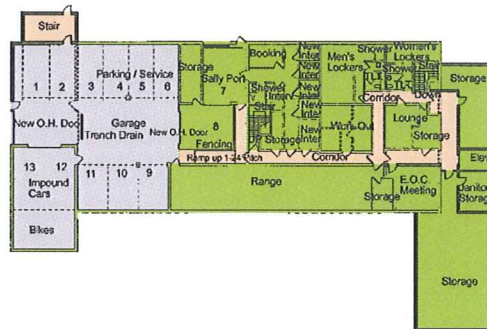
Scope:
Remodeling

Owner:
Village of River Hills
7650 N. Pheasant Lane
River Hills, WI 53217



Project Description:

The Village of Grafton hired Plunkett Raysich Architects to complete a space needs study to determine the police departments needs for the next 20 years. The report proposed an expansion of a 19,000 sq. ft. facility to the existing building 28,400 sq. ft. Included in the expansion is a Training/Public Meeting Room and a new public entry which allows ADA accessibility and increased security. The administration areas are to be renovated to allow for additional staff. The garage will be added onto in order to house a larger fleet of vehicles.



Scope:
Space needs study

Owner:
Village of Grafton
1300 Hickory Street
Grafton, WI 53024
Darrell Hofland, Village Administrator
262 375-5300



Project Description:

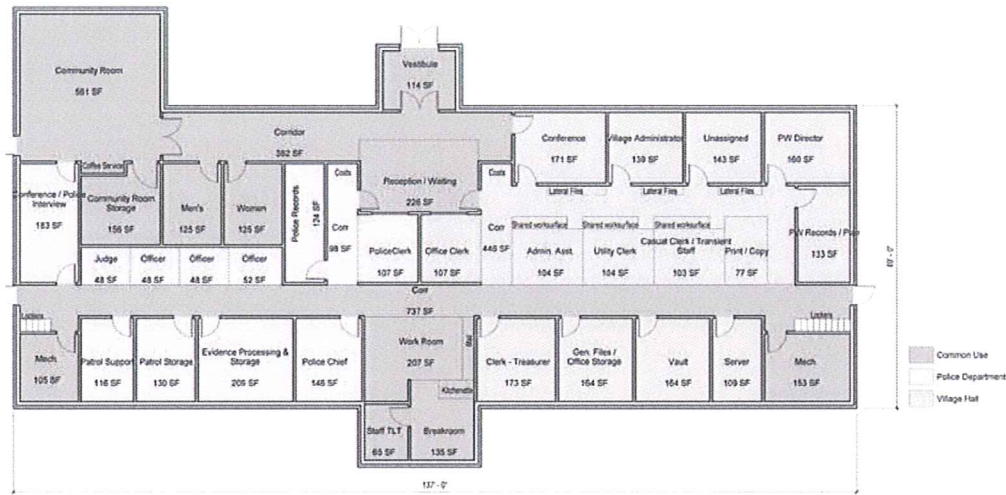
Plunkett Raysich Architects has completed a space needs study for the City of Clinton Iowa's Police Department. The study included complete programming of its entire police department and each of its divisions. The study also included a review and evaluation of their existing facility, site selection and development, and providing a final report with cost estimates and options to the city council.

Scope:

New 39,500 sq. ft. police station study

Owner:

City of Clinton
113 Sixth Ave. South
Clinton, IA 52732

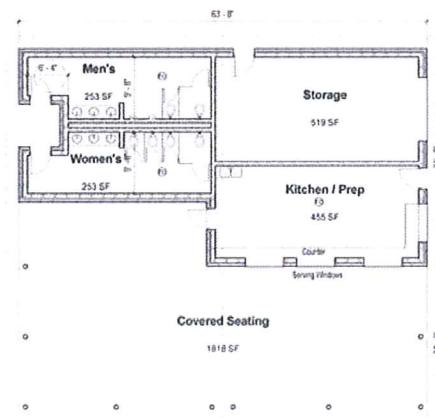


Project Description:

The Village of Cleveland hired Plunkett Raysich Architects (PRA) to help facilitate the creation of a master facilities plan. The work included a review of their existing facilities including: the Village Hall, the Police Station, the Department of Public Works, and several municipal park buildings. Additionally, PRA developed future space projections based on service and staff requirements, interviewed a wide variety of community groups, and developed several approaches to explore the most economical way to deliver Village services. The completed master plan includes floor plans for a new Village Hall and Police Department, a new DPW facility, new park facilities, and the selling of Village properties to assist in funding the projects.

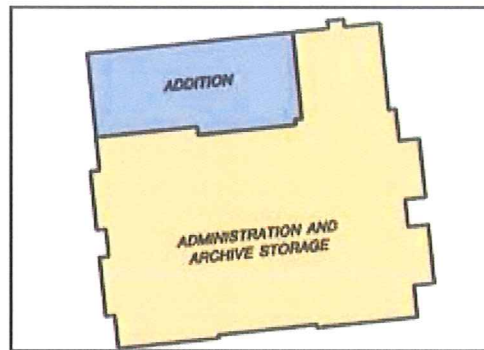
Scope:
Facilities study

Owner:
Village of Cleveland
1150 W. Washington Avenue
Cleveland, WI 53015

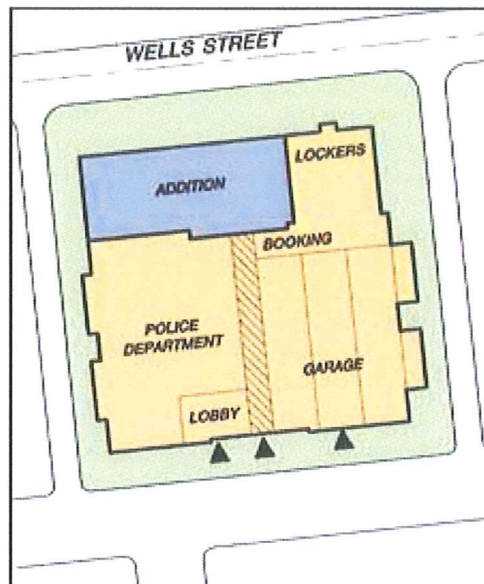


Project Description:

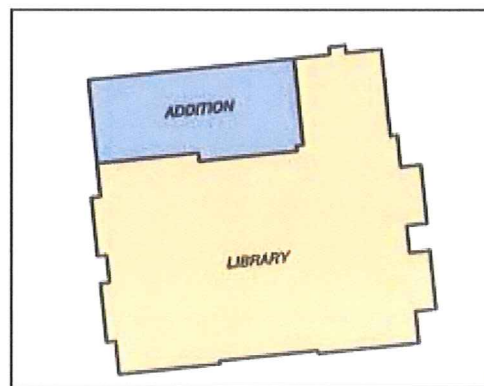
Following a failed library referendum, the City of Delafield retained Plunkett Raysich Architects to review the space needs for all municipal departments to suggest strategies to plan for future growth and maximize use of the existing facilities. Work included review/development of space needs for the City Hall, Fire and Police Departments, Department of Public Works and Public Library. Several schemes were investigated to identify the best use of the existing buildings and potential relocation sites. A physical assessment of existing conditions was conducted, and construction cost estimates for each of the master plan options was developed. The City is currently assessing funding issues.



Lower Level



Mid Level

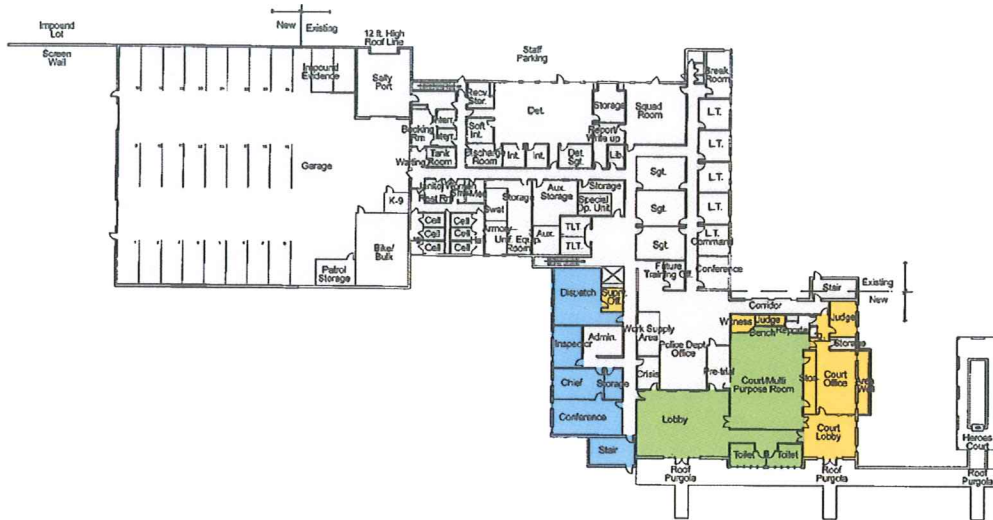


Upper Level

Scope:
Space needs study

Owner:
City of Delafield
500 N. Genesee Street
Delafield, WI 53018
Matt Carlson, City Administrator
262 646-6220

Greenfield Police Department – Greenfield, WI



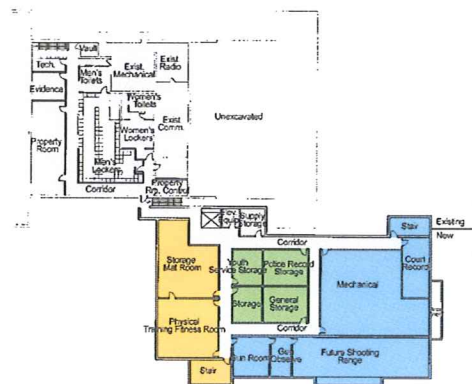
Ground Level Floor Plan

Project Description:

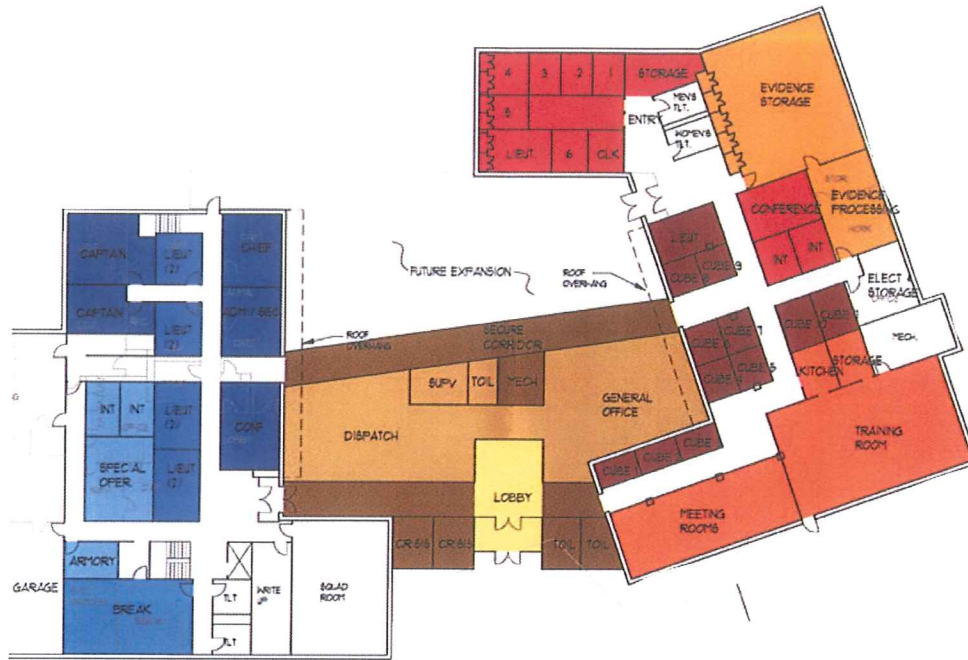
Greenfield Police Department hired Plunkett Raylich Architects to complete a Long Range Planning Study. This project included a review of the size of the City's DPW garage and police administration buildings, plus a review of the size and location of the City's indoor recreation and library facilities. Commercial real estate redevelopment opportunities near 84th and Layton, the 76th Street corridor, and 55th and Layton within the City of Greenfield were also reviewed.

Scope:
Long range planning study

Owner:
Greenfield Police Department
5300 West Layton Blvd.
Greenfield, WI 53220
Chief Francis C. Springob
414 761-5357



Lower Level Floor Plan



Project Description:

The Germantown Police Department retained Plunkett Raysich to develop a 20-year space needs study, master plan and cost estimate. The study suggested that their present 22,000 sq. ft. department be enlarged to 35,000 sq. ft. to meet the future needs of the Village's growing residential and commercial space.

It was proposed that the adjacent former library building be remodeled to accommodate the larger department. New construction was proposed as a link between the present police department and old library to include a new public entrance, family protection rooms, general office and dispatch center, the latter acting as the reception point for evening walk-ins.

A program was developed to include a 1,200 sq. ft. training room, 900 sq. ft. meeting room, 1,500 sq. ft. detective bureau and a 1,300 sq. ft. evidence processing and storage area.

Scope:

Space needs study, master plan and cost estimate

Owner:

Village of Germantown
N112 W16877 Mequon Rd.
Germantown, WI 53225
Peter Hoell, Chief of Police
262 253-7780



Project Goals and Objectives:

- Optimize existing compact site for facility expansion and safe apparatus movements
- Preserve architectural character of existing facility and historic 76' hose tower
- Alleviate overcrowded conditions and improve functionality of fire and police departments
- Address aging infrastructure issues, code deficiencies, and inefficient systems equipment

PRA Value Advantage Design Solutions:

- Maximize capacity of fire hall and configure to permit aerial truck departure in any direction
- Evoke character of existing two story structure and feature historic hose tower within contextual composition of brick masonry and window fenestration
- Expand each department by double, provide for police vehicles under roof at close proximity and create pull-through access for fire vehicles
- Modernize each department, comply with ADA requirements, replace mechanical system, and upgrade technology to effectively and expeditiously serve the community

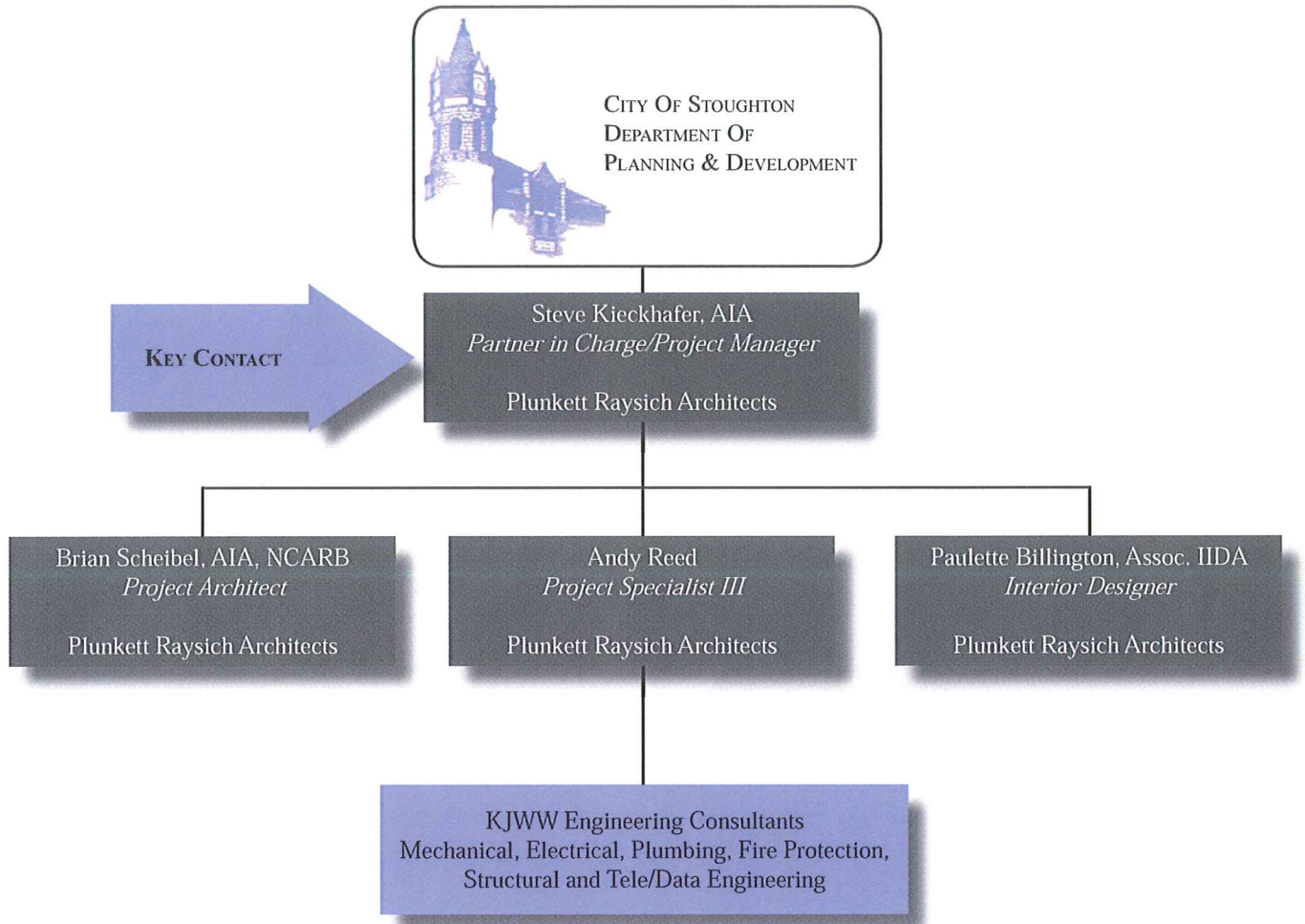
Scope:

7,250 sq. ft. addition / 6,250 sq. ft. renovation

Owner:

City of Ishpeming
100 East Division Street
Ishpeming, MI 54521
Jered Ottenwess, City Manager
906 485-1091





Paul Culver, DE



Senior Engineer

Role | Project Manager, Lead Electrical Engineer

Experience

13 Total
10 With KJWW

Education

Waukesha County Technical College
AA Electronic Technology 1996
Milwaukee School of Engineering
BS Electrical Engineering Technology
2001

Licenses

Designer of Engineering Systems 2011
Wisconsin

Presentations & Publications

Consulting-Specifying Engineer, 2006,
Engineering for the Sciences

Paul is experienced in a variety of electrical systems, including power distribution, illumination design, systems controls, fire alarm, and energy efficient design. He is a Project Manager and Lead Electrical Engineer with experience in healthcare, educational, commercial, institutional, sports venues, and industrial facilities, as well as Division of State Facilities (DSF) projects for the state of Wisconsin. Paul plays an active role at the front end of projects for electrical system planning and selection, as well as coordination of design disciplines throughout the duration of the project. He is involved with KJWW's mentoring program which provides young engineers the training and guidance needed for project design and completion, as well as consultant development.

Related Experience |

City of Dubuque | Dubuque, IA

Role | Project Manager

174,100-SF New Parking Ramp and Fire Station Vehicle Bay.....\$23,500,000

City of Richfield | Richfield, MN

Role | Project Manager, Lead Electrical Engineer

96,300-SF New Maintenance Facility\$10,800,000

City of Middleton | Middleton, WI

Role | Lead Electrical Engineer

40,000-SF New Fire Station & EMS Facility\$6,500,000

City of Oshkosh | Oshkosh, WI

Role | Lead Electrical Engineer

City Building 20,000 SF Remodel\$900,000

City of Delafield | Delafield, WI

Role | Lead Electrical Engineer

Wastewater Treatment Plant Improvements\$10,000,000

LaCrosse County | La Crosse, WI

Role | Lead Electrical Engineer, Project Manager

137,400-SF County Jail Expansion and 12,700 SF Renovation....\$23,253,065



Paul Hansen, PE



Mechanical Engineer

Role | Lead Mechanical Engineer

Experience

- 4 Total
- 4 With KJWW

Education

University of Wisconsin - Platteville
BS Mechanical Engineering 2007

Licenses

Professional Engineer 2011
Wisconsin

Affiliations

American Society of Heating
Refrigerating, and Air-Conditioning
Engineers

Awards

ACEC-IL, honor Award - Wheaton
College New Science Building 2010
DSF, Excellence in Sustainable Design -
UW-Oshkosh Elmwood Center
Renovation 2010

Paul's experience as a lead mechanical engineer and project engineer spans projects for a variety of commercial, educational, healthcare, government, and sporting facilities. His expertise includes design of systems such as geothermal, chilled water, heating water, energy recovery, heating, ventilating, air conditioning (HVAC), fire protection, plumbing, and building automation controls. He is knowledgeable in the Sustainable Design and the LEED Green Building Rating System. Paul also has experience as a commissioning agent for multiple healthcare projects, energy analysis, and completing mechanical studies of historic buildings.

Related Experience |

City of Dubuque | Dubuque, IA

Role | Lead Mechanical Engineer

174,100-SF New Parking Ramp and Fire Station Vehicle Bay.....\$23,500,000

Washington University | St. Louis, MO

Role | Energy Modeler

44,300-SF Umrath Hall Historic Renovation.....\$10,500,000

Wisconsin State Historical Society | Greenbush, WI

Role | Lead Mechanical Engineer

41,000-SF New Visitors Center / Carriage Museum.....\$8,100,000

University of Missouri - Columbia | Columbia, MO

Role | Mechanical Engineer

37,000-SF Historic Gwynn Hall Renovation\$8,365,000

University of Wisconsin - Oshkosh | Oshkosh, WI

Role | Lead Mechanical Engineer

31,500-SF Student Success Center Renovation w/Geothermal - Pursuing LEED
Silver.....\$6,200,000

School District of Jefferson | Jefferson, WI

Role | Mechanical Engineer

125,000-SF High School Expansion and 125,000-SF Renovation, Including
Geothermal and Indoor Pool.....\$35,190,000



Joe Limke, CTS-D

Technology Designer

Role | Lead Technology Designer



Experience

7 Total
7 With KJWW

Accreditations

Certified Technology Specialist (CTS)
2006
Certified Technology Specialist - Design
(CTS-D) 2008

Awards

ASHRAE, Technology Award -
Honorable Mention - UW Stout -
Jarvis Hall Expansion & Renovation
2012

Joe is a licensed CTS-D designer in technology, audio video, security, and system integration. He is experienced in design of telecommunications, wireless, and CATV building infrastructures, data centers, security systems, and performance audio/video systems. He has designed technology systems for educational, office, industrial, and government projects. Prior to joining KJWW, Joe served in the United States Army for three years.

Related Experience |

City of Dubuque | Dubuque, IA

Role | Lead Technology Engineer

174,100-SF New Parking Ramp and Fire Station Vehicle Bay.....\$23,500,000

City of Richfield | Richfield, MN

Role | Lead Technology Engineer

96,300-SF New Maintenance Facility\$10,800,000

City of Middleton | Middleton, WI

Role | Technology Engineer

40,000-SF New Fire Station & EMS Facility\$6,500,000

City of Stoughton | Stoughton, WI

Role | Technology Engineer

22,000-SF New Fire Station\$3,900,000

Wisconsin Department of Administration | Madison, WI

Role | Technology Engineer

GEF-2 Phase II Renovation.....\$4,000,000

Wisconsin Department of Health & Family | Winnebago, WI

Role | Technology Engineer

Winnebago Mental Health Institute Fiber Optic Network Upgrade\$850,000

UW Credit Union | Madison, WI

Role | Lead Technology Engineer

27,000-SF Credit Union Conversion.....Confidential

10,000-SF Credit Union Renovation.....Confidential



City of Stoughton

New Fire Station | Stoughton, WI

Budget: \$3,900,000

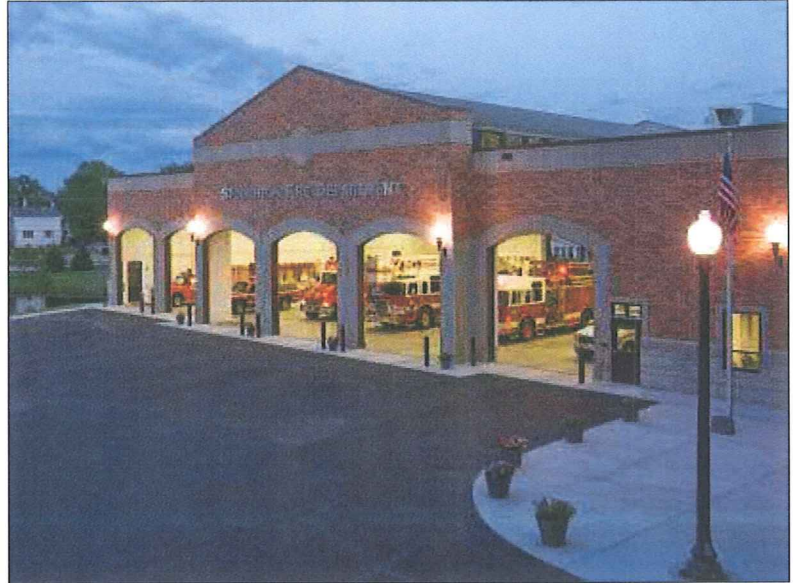
Completion: May 2008

Square Feet: 19,610 New

Delivery: Design / Bid / Build

Services: Construction Administration,
Electrical, Fire Protection,
Mechanical, Structural,
Audio/Visual,
Telecommunications,
Security

Prime: SEH



Background |

The new City of Stoughton fire station consisted of an Apparatus Bay which included parking for fire trucks, ambulances, and other life rescue vehicles; offices; a training room; a laundry room, a radio room and a kitchen.

We incorporated a fixed plate heat exchanger in the unit to reclaim energy on the 100% makeup air unit needed for the ventilation of the Apparatus Bay; and we also included a total energy wheel to recovery energy from the building exhaust and relief airstreams.



<i>Budget:</i>	\$6,500,000
<i>Completion:</i>	September 2008
<i>Square Feet:</i>	40,000 New
<i>Delivery:</i>	Design / Bid / Build
<i>Services:</i>	Construction Administration, Electrical, Fire Protection/Detection, Mechanical, Structural, Audio/Visual, Security, Telecommunications
<i>Prime:</i>	SEH



Background |

The project included two separate buildings with a shared parking lot. One building was approximately 10,000 square feet and houses the EMS department. The building includes general office space, sleeping quarters, training room, and apparatus bay for vehicle and supply storage.

The second building is approximately 38,000 square feet and houses the fire station department. This building includes sleeping quarters, general office space, rec and training rooms as well as a full service kitchen. The apparatus bay is used to storage vehicles and gear.

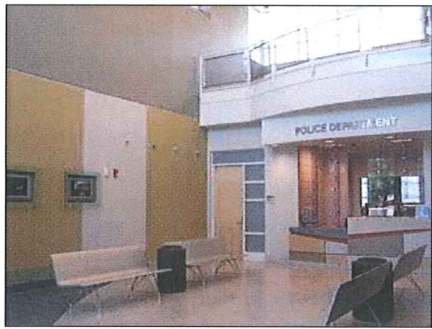
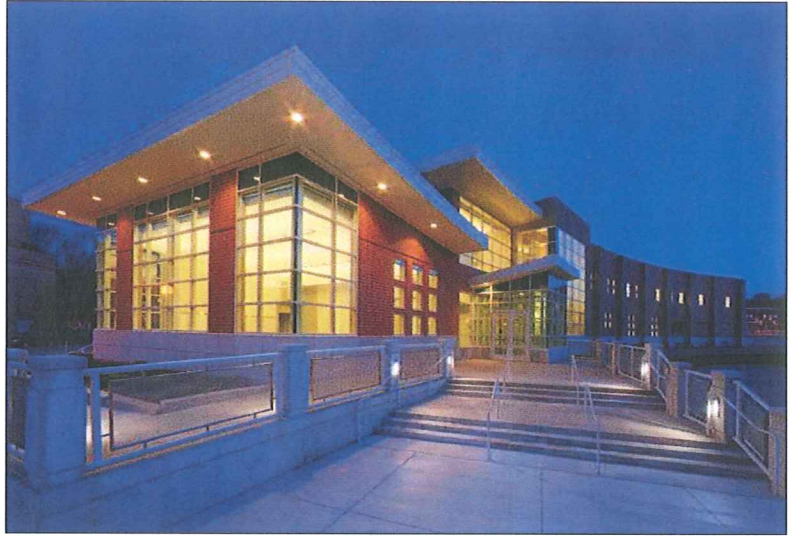
Additional features include:

- Make-up air units with exhaust serve the apparatus bays and are controlled by CO/NO2 sensors to regulate the frequency of exhaust required. Radiant heating is used at the overhead doors to maintain space temperature during frequent use of the garage doors.
- Packaged variable air volume air-handling units serve the occupied areas of the buildings. Each space is given zone temperature control with a variable air terminal box with hot water reheat. Hot water for heating is provided with high-efficiency non-condensing style boilers and air-conditioning is provided with air-cooled condensing units for the occupied parts of the building only.
- RO water system is provided for drinking water for the building and softened water is provided for vehicle cleaning.

City of Moline

New Public Safety Facility – Certified LEED Certified | Moline, IL

<i>Budget:</i>	\$10,600,000
<i>Completion:</i>	2006
<i>Square Feet:</i>	62,000 New
<i>Delivery:</i>	Design / Bid / Build
<i>Services:</i>	Electrical, HVAC, Plumbing/Piping, Fire Protection/Detection, Lighting
<i>Prime:</i>	Dewberry-PSA



Background |

Along with detention spaces, the new police station includes administrative and meeting areas, a large community room, weapons and defense training areas, conference space and a parking garage. The City of Moline was committed to achieving LEED certification for the building. This project required an energy efficient design with an educational aspect to help inform the public about the benefits of sustainable design.

Challenges & Solutions |

- Protection from terrorism was a concern during the planning phase of this building. Emergency ventilation system controls were provided and fresh air intakes were positioned per FEMA force protection guidelines. Emergency ventilation controls provide customized protection depending on the threat.
- The lighting system highlights unique architectural features of the building and includes active day lighting for the areas receiving natural lighting to save energy. Specialty fixtures were used to illuminate the building while minimizing the light



pollution in the downtown area. Lighting calculations target the building for 20% less electrical usage compared to a conventionally designed building of the same size.

- KJWW designed individual power metering for the three branches of power and utility metering and for the natural gas metering. An educational display monitor, located in the front lobby, shows outputs from the meters and other temperature controls. It shows real-time energy usage and is presented in a user-friendly manner.
- Many different air handling systems were used to support the functionality of the space and save energy.

Additional design features included:

- Hardened utility entrances
- Laboratory exhaust system
- Specialized weapons training range air handling system
- Snow melt system for car ramp down to parking garage
- Room occupancy sensors for lighting control and ventilation air for high occupancy rooms to provide good IAQ and save energy when not occupied.

Village of Slinger

Village Hall 20,000 SF Exp / 14,000 SF Ren | Slinger, WI

<i>Budget:</i>	\$3,800,000
<i>Completion:</i>	October 2000
<i>Square Feet:</i>	14,000 New
<i>Delivery:</i>	Design / Bid / Build
<i>Services:</i>	Electrical, Mechanical, Technology
<i>Prime:</i>	MSA Professional Services



Background |

KJWW provided MEP and technology designs for a new municipal building, a municipal garage addition, a stand-alone police garage, and complete renovation of the existing municipal building into a library. The municipal garage addition can house up to five public work trucks and snow plow equipment.

The new 14,000 SF municipal building houses the Police Department on one side and administrative offices on the other. The Police Department has a 5,400 SF, four-stall garage with three stalls for squad cars and one for impounded evidence. There is also a 1,300 SF, outside impound area with room for four vehicles.

The Village Administration offices consist of a lobby, offices, a Village Board meeting room which doubles as a municipal courtroom, and fire-rated records storage area.

The existing 7,200 SF municipal building was remodeled into a library. The renovated space includes a separate children's area, multi-purpose meeting room, and a new reading area in the adult section. The circulation area features computer stations and a workroom for librarians. A new heating and air-conditioning system was installed.



Safety

- City / Village Halls
- Police Stations
- Fire Stations
- Public Works
- Maintenance Bays
- Waste Facilities
- Bus Stations / Garages

Client and Project *Budget*

Administrative and Public Safety Facilities |

City of Dubuque | Dubuque, IA

Two New Parking Decks & Fire Station Vehicle Bay \$23,500,000

Village of Arlington Heights | Arlington Heights, IL

New 78,000 SF Village Hall \$20,000,000

New 16,000 SF Fire Station..... \$4,200,000

Police Station 3,200 SF Addition \$575,000

City of Des Moines | Des Moines, IA

New 500,000 SF Parking Ramp – Electrical..... \$17,000,000

20,000 SF New Multi-Modal Systems Commissioning \$10,500,000

New 50,000 SF Main Fire Station – Pursuing LEED Certified..... \$6,000,000

Western Gateway Park Improvements \$6,000,000

Public Works New Storage Building \$1,500,000

Blank Park Zoo Tiger Pond Improvement..... \$175,000

City of Ankeny | Ankeny, IA

New 68,300 SF Police Station..... \$14,000,000

Olmsted County | Olmstead County, MN

New 97,000 SF Office Building & Renovation..... \$14,500,000

City of Clayton | Clayton, MO

7-Story Office Renovation to Police Headquarters -LEED Silver . \$12,600,000

New Data Center..... \$250,000

City of Richfield | Richfield, MN

New 96,300 SF Maintenance Facility \$10,800,000

City of Moline | Moline, IL

New 62,000 SF Police Station – LEED Certified \$10,600,000

Fire Station Feasibility Study N/A

Village of Libertyville | Libertyville, IL

126,000 SF New 360-Car Parking Ramp \$8,800,000



Municipal Buildings

Safety

- City / Village Halls
- Police Stations
- Fire Stations
- Public Works
- Maintenance Bays
- Waste Facilities
- Bus Stations / Garages

<i>Client and Project</i>	<i>Budget</i>
City of Huntley Huntley, IL New 51,000 SF Village Hall / Police Station Structural Design	\$8,000,000
City of Sun Prairie Sun Prairie, WI New West Side Community Services Building Structural Design...	\$7,500,000
Village of Carpentersville Carpentersville, IL Structural Design for Public Works Facility	\$7,500,000
City of Ames Ames, IA Intermodal Parking Facility – LEED Gold	\$7,000,000
City of Middleton Middleton, WI New Fire Station & EMS Facility	\$6,500,000
Village of Burr Ridge Burr Ridge, IL 19,000 SF Structural Design for New Police Facility	\$6,300,000
City of Downers Grove Downers Grove, IL Structural Design for New 30,000 SF Fire Station	\$6,000,000
Lake County Waukegan, IL 36,000 SF Office Building Renovation	\$6,000,000
Infrastructure Assessment Master Plan	\$2,600,000
Central Heating Plant Upgrade	\$1,700,000
Admin Building Fire Alarm Replacement	\$1,000,000
Central Cooling Plant Upgrade	\$900,000
Work Release Facility HVAC Upgrade	\$100,000
1500 SF Office Building Atrium Lighting Upgrade	\$30,000
Admin Building Elevator Electrical Study	\$0
Department of Corrections Rooftop Equipment Study	\$0
Office Building Domestic Water Study	\$0
Village of Montgomery Montgomery, IL New Village Hall	\$6,000,000
City of Chicago Chicago, IL New Fire Station #70 – LEED Certified	\$5,000,000
City Hall Office 10 th Floor Remodel – Pursuing LEED Silver	\$1,000,000



Municipal Buildings

Safety

- City / Village Halls
- Police Stations
- Fire Stations
- Public Works
- Maintenance Bays
- Waste Facilities
- Bus Stations / Garages

<u>Client and Project</u>	<u>Budget</u>
15,000 SF Department of Planning Office Renovation.....	\$1,000,000
Police Academy Mechanical System Assessment	\$800,000
City of Dixon Dixon, IL	
Riverfront Plaza Improvements	\$5,000,000
Village of Deerfield Deerfield, IL	
Structural Design for New Village Hall.....	\$4,200,000
City of West Des Moines West Des Moines, IA	
New 28,000 SF Police / Fire / EMS Facility	\$4,000,000
New 18,000 SF Fire Station #2 & Training Center	\$2,600,000
Fire Station #1 Renovation	\$500,000
City of Evanston Evanston, IL	
New 14,000 SF Fire Station – Certified LEED Gold	\$4,000,000
New Fire Station #5 – Certified LEED Silver	\$4,000,000
City of Stoughton Stoughton, WI	
New 19,610 SF Fire Station.....	\$3,900,000
Village of Slinger Slinger, WI	
Village Hall 20,000 SF Exp / 14,000 SF Renovation	\$3,800,000
City of Cedar Rapids Cedar Rapids, IA	
New 15,000 SF Animal Control Facility – LEED Gold	\$3,800,000
City of Downers Grove Downers Grove, IL	
New 30,000 SF Fire Station - Structural	\$3,300,000
Huntley Fire Protection District Algonquin, IL	
New Fire Station - Structural	\$3,200,000
Story County Nevada, IA	
Administration Building 42,000 SF Remodel	\$2,750,000
Administration Building Renovation Study.....	\$800,000
City of Bettendorf Bettendorf, IA	
City Hall, Police and Fire Department Municipal Bldg Expansion .	\$2,700,000



Municipal Buildings

Safety

- City / Village Halls
- Police Stations
- Fire Stations
- Public Works
- Maintenance Bays
- Waste Facilities
- Bus Stations / Garages

<i>Client and Project</i>	<i>Budget</i>
City of Country Club Hills Country Club Hills, IL	
New 16,500 SF Vehicle Storage Facility - Structural.....	\$2,500,000
New 2,700 SF Municipal Campus Structural Design.....	\$500,000
City of Urbandale Urbandale, IA	
Police Department Expansion/Renovation	\$2,400,000
City Hall & Library Back-Up Generators	\$100,000
Ames Transit Agency Ames, IA	
10,000 SF Bus Facility Expansion – LEED Gold	\$2,250,000
Village of Oregon Oregon, WI	
Lighting for Streetscape Renovation – Phase 1	\$2,081,000
Lighting for Streetscape Renovation – Phase 2	\$741,000
Village of Cottage Grove Cottage Grove, WI	
New 15,000 SF Police, Fire, EMS Departments and Municipal Building	\$1,700,000
City of Marshalltown Marshalltown, IA	
Historical Library Conversion to Administrative Offices	\$1,600,000
City of West Burlington W. Burlington, IA	
New City Hall	\$1,500,000
Dane County Westport, WI	
New Sheriff's Department Administration Building and Firearm Range	\$1,500,000
City of Aledo Aledo, IL	
New Fire Station	\$1,200,000
City of Chicago Chicago, IL	
20,000 SF City Hall Renovation - Pursuing LEED Silver	\$1,000,000
City of Markesan Markesan, WI	
Police Department / Municipal Building 25,000 SF Renovation	\$1,000,000



Municipal Buildings

Safety

- City / Village Halls
- Police Stations
- Fire Stations
- Public Works
- Maintenance Bays
- Waste Facilities
- Bus Stations / Garages

<i>Client and Project</i>	<i>Budget</i>
City of Oshkosh Oshkosh, WI City Building 20,000 SF Remodel.....	\$900,000
City of Winterset Winterset, IA City Hall 5,400 SF Renovation	\$850,000
City of Rochelle Rochelle, IL City Hall 5,500 SF Expansion	\$663,000
City of Davenport Davenport, IA New Fire Training Facility	\$650,000
	West Community Center Air Conditioning Addition
	\$250,000
City of DeWitt DeWitt, IA Conversion of Existing Building to New City Hall	\$500,000
City of Darlington Darlington, WI 2660 SF New Park Restroom and Shower Building	\$450,000
City of Pleasant Hill Pleasant Hill, IA 5,000 SF Pleasant Hill City Complex Remodel of Library, Police Dept & Fire Dept Space	\$300,000
City of Clayton Clayton, MO 300-SF New Data Center	\$250,000
City of Yates City Yates City, IL Fire Station Expansion	\$250,000
DeKalb County Sycamore, IL Public Safety Building Boiler Replacement.....	\$150,000
City of Bettendorf Bettendorf, IA 20,000 SF City Hall HVAC Upgrade	\$105,000
City of Urbandale Urbandale, IA City Hall and Library Back-Up Generators.....	\$100,000



Municipal Buildings

Safety

- City / Village Halls
- Police Stations
- Fire Stations
- Public Works
- Maintenance Bays
- Waste Facilities
- Bus Stations / Garages

Client and Project *Budget*

City of Des Plaines | Des Plaines IL
 Streetscape Improvements N/A

City of Monona | Monona, WI
 Exterior Monument Lighting N/A

Public Works and Maintenance Facilities |

City of Richfield | Richfield, MN
 New 96,300 SF Maintenance Facility \$10,800,000

Village of Carpentersville | Carpentersville, IL
 99,000-SF New Public Works Facility - Structural \$7,500,000

City of Algonquin | Algonquin, IL
 New 56,000 SF Public Works Facility Structural Design \$6,500,000

Illinois Air National Guard | Peoria, IL
 New 65,000 SF Maintenance and Storage Facility \$5,000,000
 New 17,500 SF Maintenance Facility \$1,900,000
 New 14,500 Equipment Inspection and Storage Facility \$1,500,000

Cook County Highway District | Chicago, IL
 Commissioning Services for Maintenance Facility Expansion and
 Renovation - Certified LEED Certified \$3,000,000

Iowa Army National Guard | Johnston, IA
 New 45,000 SF Maintenance, Equipment, and Vehicle Storage ... \$2,800,000

City of Rock Falls | Rock Falls, IL
 New 18,000 SF Public Works Facility \$1,500,000

City of Des Moines | Des Moines, IA
 10,000 SF New Public Works Storage Building \$1,500,000

Iowa Air National Guard | Davenport, IA
 15,622-SF New Motor Vehicle Storage Facility \$1,200,000



Municipal Buildings

Safety

- City / Village Halls
- Police Stations
- Fire Stations
- Public Works
- Maintenance Bays
- Waste Facilities
- Bus Stations / Garages

Client and Project *Budget*

City of Iowa City | Iowa City, IA
 New 6,500 SF Public Works Office..... \$1,000,000

Illinois Department of Transportation | Milan, IL
 New 18,000 SF Maintenance and Storage Facility..... \$270,000

City of St. Charles | St. Charles, IL
 New Public Works Facility Structural Assessment N/A

Village of Schaumburg | Schaumburg, IL
 Facility Assessment of 31 Public Works Buildings N/A

Waste Facilities |

Metro Waste Authority | Des Moines, IA
 New Administration Office, Maintenance,
 Storage and Scale Municipal Building \$3,500,000

Waste Commission of Scott County | Davenport, IA
 New 15,000 SF Waste Recycling Facility \$1,500,000
 Material Recycling Facility Expansion \$650,000
 New Material Recycling Facility \$500,000
 Landfill Building Expansion..... \$213,000

Hardin County | Hardin and Eldora, IA
 Recycling Center 10,200 SF Expansion \$430,000
 New 7,200 SF Recycling Center..... \$250,000

LaCrosse County | LaCrosse, WI
 New Household Hazardous Waste Disposal Facility..... \$300,000

Public Transportation Facilities |

Town of Normal | Normal, IL
 69,000 SF New Multi-Modal Center – LEED Silver \$10,500,000
 Multimodal Pedestrian Overpass..... \$750,000



Municipal Buildings

Safety

- City / Village Halls
- Police Stations
- Fire Stations
- Public Works
- Maintenance Bays
- Waste Facilities
- Bus Stations / Garages

<i>Client and Project</i>	<i>Budget</i>
City of Des Moines Des Moines, IA 20,000 SF New Multi-Modal Systems Commissioning	\$10,500,000
City of Moline/MetroLINK Moline, IL New 300 Car Parking Ramp and Mass Transit Station	\$5,200,000
City of Rock Island Rock Island, IL New 72,000 SF Public Bus Garage and Administration Office	\$4,900,000
Ames Transit Agency Ames, IA New Bus Storage Facility and Office Addition	\$3,000,000
10,000 SF Bus Facility Expansion – LEED Gold	\$2,250,000
Lake County Libertyville, IL Transportation Building Fire Alarm Replacement	\$1,500,000
Transportation Building Electrical System Analysis	N/A
City of Peoria Peoria, IL Peoria CityLink Bus Station Facility Study	N/A



The scope of work of your project includes many different skill sets. Our team has the experience and resources to bring expertise to the varying types of projects from minor renovation to roofing, and the requirements for mechanical engineering.

We organize our work with the creation of a work plan that defines the tasks and identifies a time period in which to complete the tasks. The draft work plan we propose breaks down the phases of basic services from Programming and Concept through Construction Administration. This work plan will identify the number of times that we anticipate needing input from the City and Police staff. There are several times throughout the progress of the project that the users will have input to the details of the project. It is our goal to listen to your needs and interact with the users to make certain that we accomplish the expectations to make this project a success.

Work Plan	Schedule*
<u>Programming and Concept</u>	
Kick-off meeting with City and Police staff to establish project goals, describe process, communications and understanding of program needs	March 19, 2012
Meet with City and Police staff to review understanding, program needs, concept floor plan design and concept budget	April 9, 2012
<u>Schematic Design</u>	
Receive approval to proceed to Schematic Design	April 16, 2012
Meet with City and Police staff to review details of schematic design to proceed to DD	May 7, 2012
<u>Design Development</u>	
Engineering input	May 8, 2012
Update budget and project schedule	May 21, 2012
Meet with City and Police staff to review details of the design development to proceed to CD	May 28, 2012
<u>Construction Documents</u>	
Engineering coordination meetings	June 4, 2012
Meet with City and Police staff to review details of the design	June 11, 2012
PRA quality control review	June 19, 2012
Submit plans to General Contractors for bidding	June 22, 2012
<u>Bidding</u>	
Pre-Bid meeting	June 28, 2012
Issue addendum	July 9, 2012
Receive Bids	July 12, 2012
Submit to City Council for approval	July 19, 2012
City Council approves bids	July 24, 2012
Issue contract	July 31, 2012
<u>General Construction</u>	
Pre-Construction meeting	August 13, 2012
Begin construction staging	August 20, 2012
Review progress of construction	Monthly
Issue substantial completion and begin Close-out procedures	December 21, 2012
Final Inspection and Compliance statement	December 28, 2012

**dates are tentative, subject to availability*

We understand your project includes multiple facility upgrades and each one has an estimated budget. We will work with you to accomplish your goals for each area including the basement HVAC, first floor office removal and addition of an exit door, first floor corridor wall removal, second floor security door and finishes, addition of a communicating stair, reroofing and second floor bathroom renovations.

For basic services, we propose the following fee:

Individual Projects/Renovations

Construction Cost	*Proposal Fee at % of **Construction Cost
Under \$100,000	Hourly***
\$100,001 - \$250,000	Hourly*** to maximum of 12%
\$250,001 - \$500,000	Hourly*** to maximum of 10%

* Fee reflects basic services of Architectural, Interior Color Selection, Structural, Mechanical, Plumbing and Electrical consulting. Excluded from the basic services fee if needed is furniture selection.

**Construction Cost includes all fixed equipment, contractor markups and overhead, bonds, insurance and General Conditions and used contingency.

Also for Consideration

- A. For purposes of the proposal we will assume the following items will be provided by the owner. The costs associated with these items are excluded.
 - 1. Building plans and elevations in AutoCAD Release 14 format.
 - 2. A complete property survey, if necessary, (topography, above and below grade utilities, easements, wetland delineation, etc.) in AutoCAD Release 14 format.
 - 3. A soils report, if necessary, which establishes (among other items) the soil bearing capacity associated with building foundation/slabs, recommends foundation design characteristics and establishes pavement design criteria.
 - 4. Storm water management/civil engineering of the site if necessary.
- B. This proposal will form the initial basis of our agreement. When accepted, we will prepare an AIA Agreement for execution will cover the proposed work and our respective responsibilities. This proposal is based on a Standard AIA Contract with minor modifications made by PRA. Modifications made by the City of Stoughton to this contract may result in a fee change.
- C. Fees for reimbursable expenses (plotting, printing, reprographic services, shipping and postage and photography) will be billed at 1.20 times our cost. Travel is included in the base fee.

Reimbursable cost is estimated to be \$2,100.00

D. Fees for local, County and/or State plan reviews/approvals and/or building permits of any sort are excluded.

Reviews/approval cost is estimated to be \$600.00

***F. An hourly rate schedule of our personnel is below. Hourly billing rates as of January 2012 subject to annual review.

Employee Classification	Billing Rate per Hour
Managing Partner	\$220
Partner	\$170 - \$210
Senior Project Manager	\$145 - \$185
Project Manager	\$130 - \$160
Senior Designer	\$120 - \$160
Designer	\$ 70 - \$125
Senior Project Architect	\$120 - \$160
Project Architect	\$ 90 - \$135
Project Executive	\$110 - \$145
Architect	\$ 80 - \$125
Project Specialist III	\$ 75 - \$115
Project Specialist II	\$ 65 - \$ 80
Project Specialist I	\$ 55 - \$ 70
Intern	\$ 40 - \$ 55
Senior Interior Designer	\$ 95 - \$130
Interior Designer	\$ 55 - \$100
Construction Administrator	\$135 - \$190
Construction Coordinator	\$ 75 - \$ 85
Engineer	\$ 90 - \$185

