



CITY OF STOUGHTON
DEPARTMENT OF
PLANNING & DEVELOPMENT
381 East Main Street, Stoughton, WI. 53589

(608) 873-6619

www.ci.stoughton.wi.us

RODNEY J. SCHEEL
DIRECTOR

Date: November 28, 2018

To: Public Works Committee

From: Rodney J. Scheel
Director of Planning & Development

Subject: 2019 Street Projects – Sidewalk Infill Issues

At your meeting in November, you were presented with a number of sidewalk infill situations for consideration. Since that time, additional field work has been obtained and we wish to finalize design concepts before design work proceeds.

Lowell Street (Monroe St. to Page St.) – Sidewalks exist on the north side except for the easternmost end at Page Street. No sidewalks exist on the south side of the street for the entire length. Following City Policy, this project would include infilling sidewalks on the south side of the street and a short segment on the north side at Page Street. As you can see from the attached images, infilling sidewalk on the south side of Lowell Street will present some design challenges and the need to acquire additional right-of-way or easements. **Due to these circumstances, staff recommends deviating from City policy and only infilling sidewalk on the north side of Lowell Street to complete a continuous stretch of sidewalk and not install new sidewalks on the south side as part of this project.**

South Page Street (Lowell St. to Milwaukee St.) – While not technically part of the 2019 Project, we see another opportunity to infill a missing link by adding sidewalk on the west side of S. Page Street from Lowell Street to Milwaukee Street adjacent to the City Park. **Staff recommends expanding the project to include sidewalk on the west side of Page Street between Lowell Street and Milwaukee Street.**

Monroe Street (Milwaukee St. to Lowell St.) - While not technically part of the 2019 Project, we conducted base survey work to consider infilling missing sidewalk on the east side of this segment of Monroe Street. Sidewalk exists on the west side of the street. No street work is planned for this segment in 2019. Based on preliminary survey work, it does not appear that Monroe Street is centered in the existing right-of-way. The street is also not parallel to the right-of-way. This means that we would likely need to acquire right-of-way or easements to construct sidewalk along the east side of this block while maintaining a grass terrace. Alternatively, we could install a 6 foot wide sidewalk in this block with no terrace. Regardless, temporary easements will be needed for grading

and/or retaining wall construction. **Due to the offset street configuration, lack of right-of-way and grade challenges, staff recommends not including sidewalk infill in this segment as part of the 2019 Project.**

Patterson Street (Monroe St. to Harrison St.) – Currently no sidewalks exist on the south side of Patterson Street. Sidewalks are continuous on the north side of the street. The project is planned to infill sidewalks on the south side of Patterson Street. This is a narrow street. **We recommend the Committee discuss whether sidewalks should be installed on the south side of Patterson Street as part of the 2019 reconstruction project.**

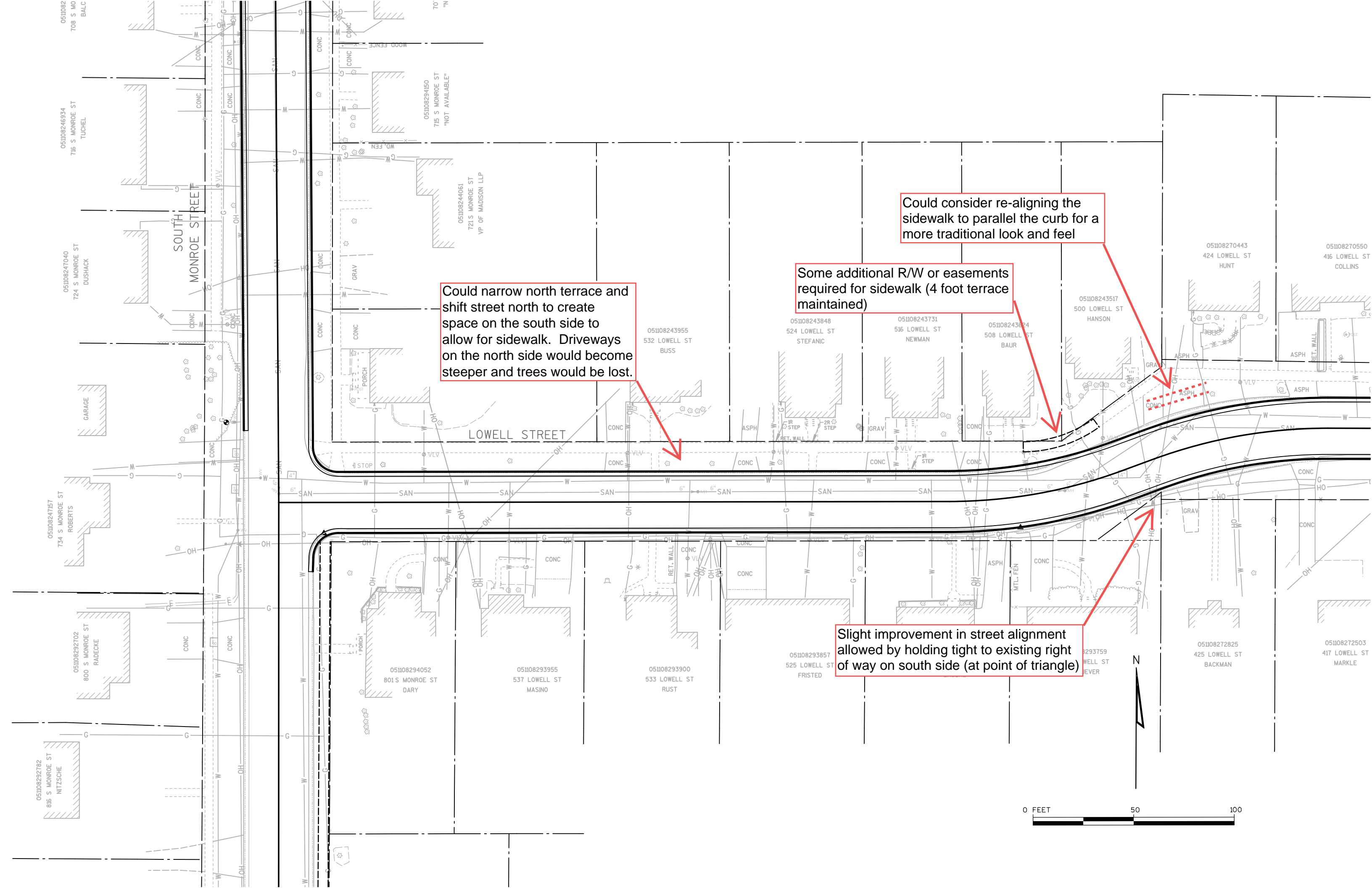
Grant Street (Prospect St. to Taft St) – The 2019 Budget includes pulverization from McKinley Street to Taft Street and the 2020 CIP planned to reconstruct from Prospect Street to McKinley Street. Recent survey and evaluation has provide more information on the condition of both segments. The north block between Taft Street and McKinley Street is 37 feet back to back while the south block between McKinley Street and Prospect Street is 29 feet back to back. The new street design is planned to match the existing widths. **Staff recommends that the 2019 Pulverization project from McKinley Street to Taft Street be changed to a reconstruction project and added to the 2020 reconstruction project with the segment from Prospect Street to McKinley Street.**

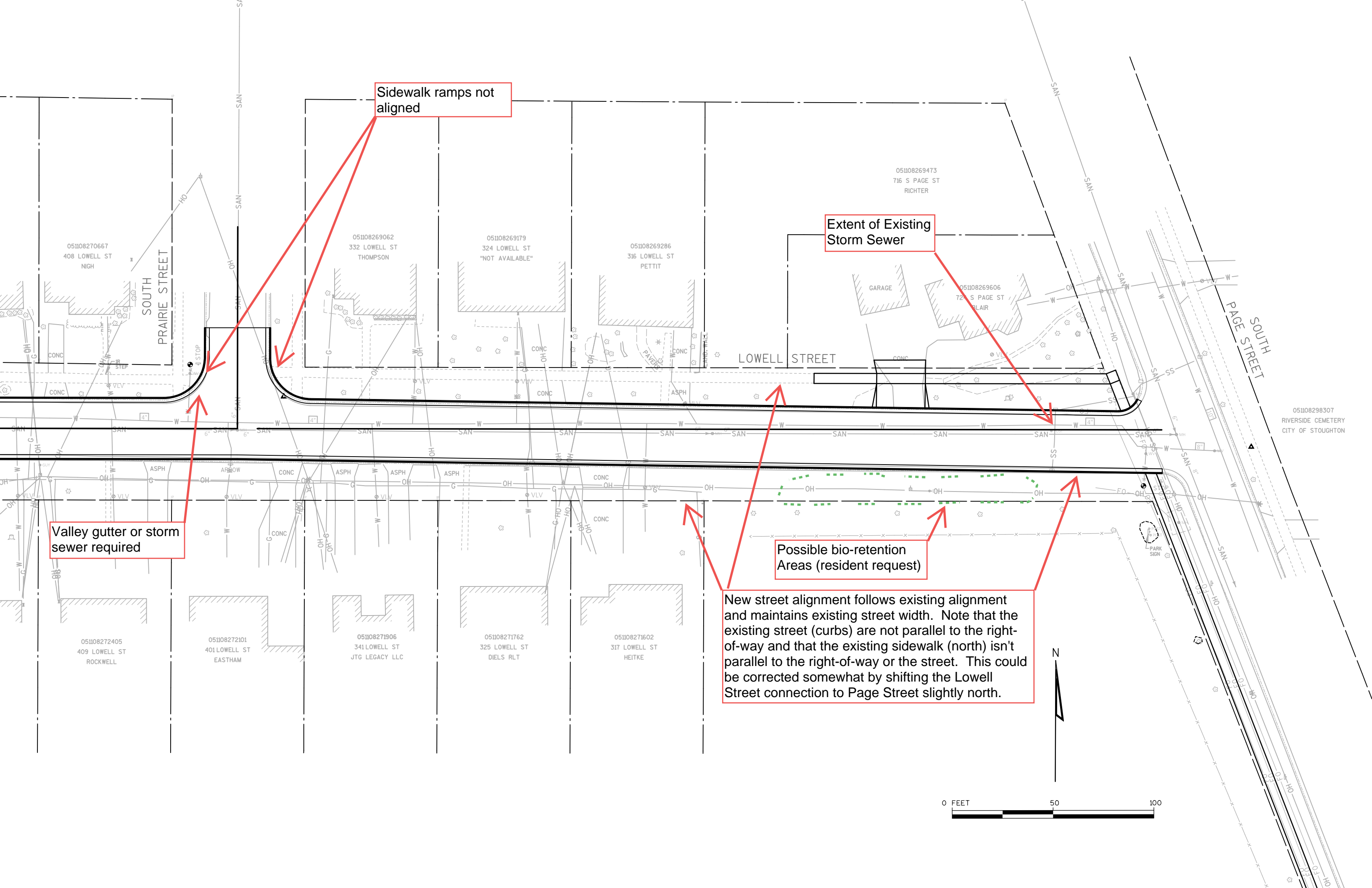
Assuming support to change the pulverization project to a reconstruction project we will need to evaluate sidewalk installation for both blocks. Under the sidewalk installation policy we would install sidewalks on **both sides** of the street. No sidewalk exists along the east side of Grant Street in the two block segment. Sidewalk currently exist on the south 2/3rds of the southern block. Existing garages are very near the right-of-way on the east side of the southern block. **Due to existing conditions and since sidewalks exist on a portion of the west side of the street staff recommends that sidewalks only be infilled on the west side of the street in this two block segment of Grant Street.**

Your assistance in addressing these policy questions early in the process will be helpful in the design. It is my recommendation that you consider and act on each situation outlined.

If you have any questions, please contact me.

Lowell Street Sidewalk Materials





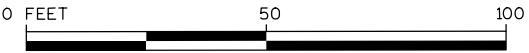
Sidewalk ramps not aligned

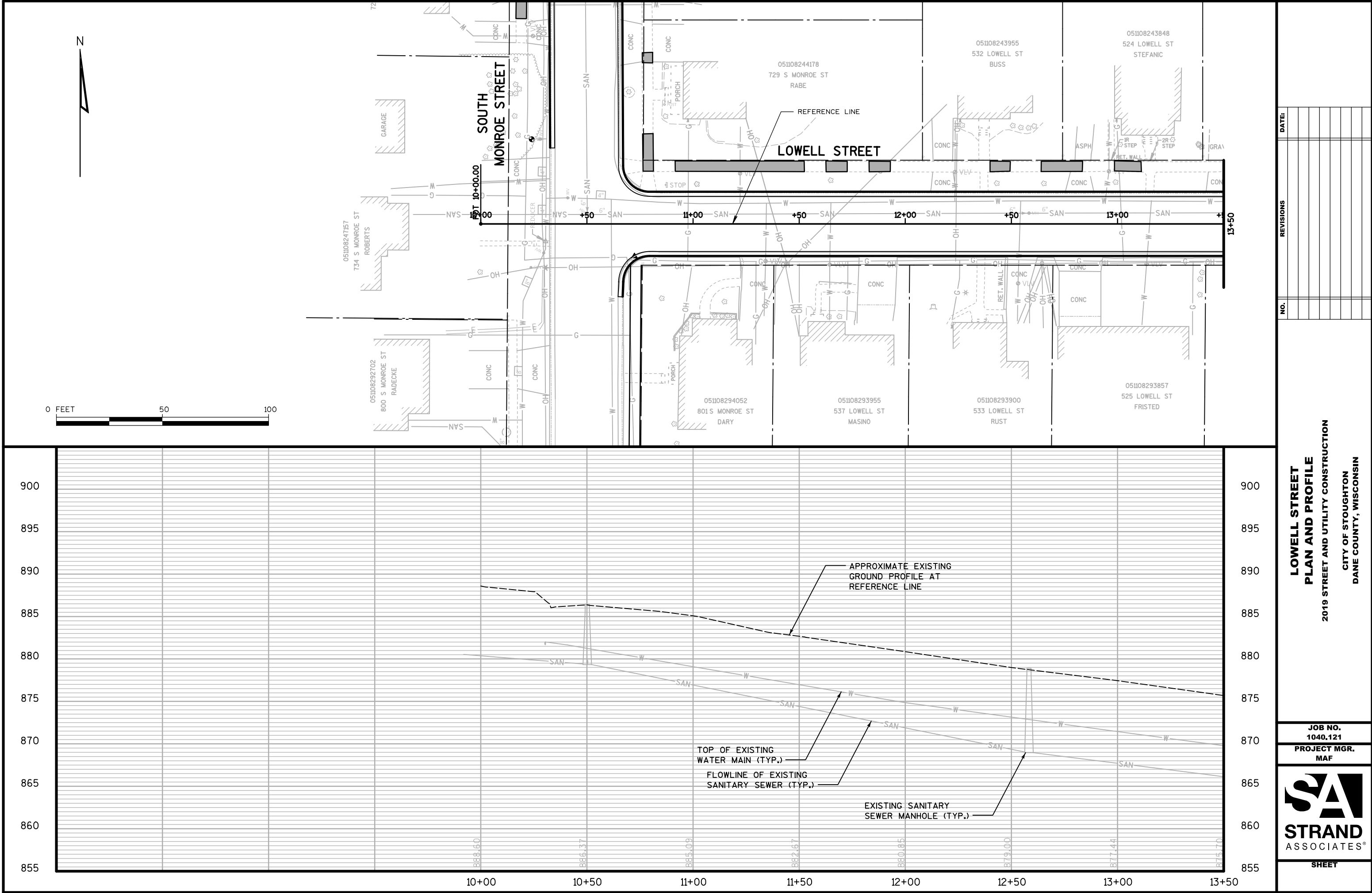
Extent of Existing Storm Sewer

Valley gutter or storm sewer required

Possible bio-retention Areas (resident request)

New street alignment follows existing alignment and maintains existing street width. Note that the existing street (curbs) are not parallel to the right-of-way and that the existing sidewalk (north) isn't parallel to the right-of-way or the street. This could be corrected somewhat by shifting the Lowell Street connection to Page Street slightly north.







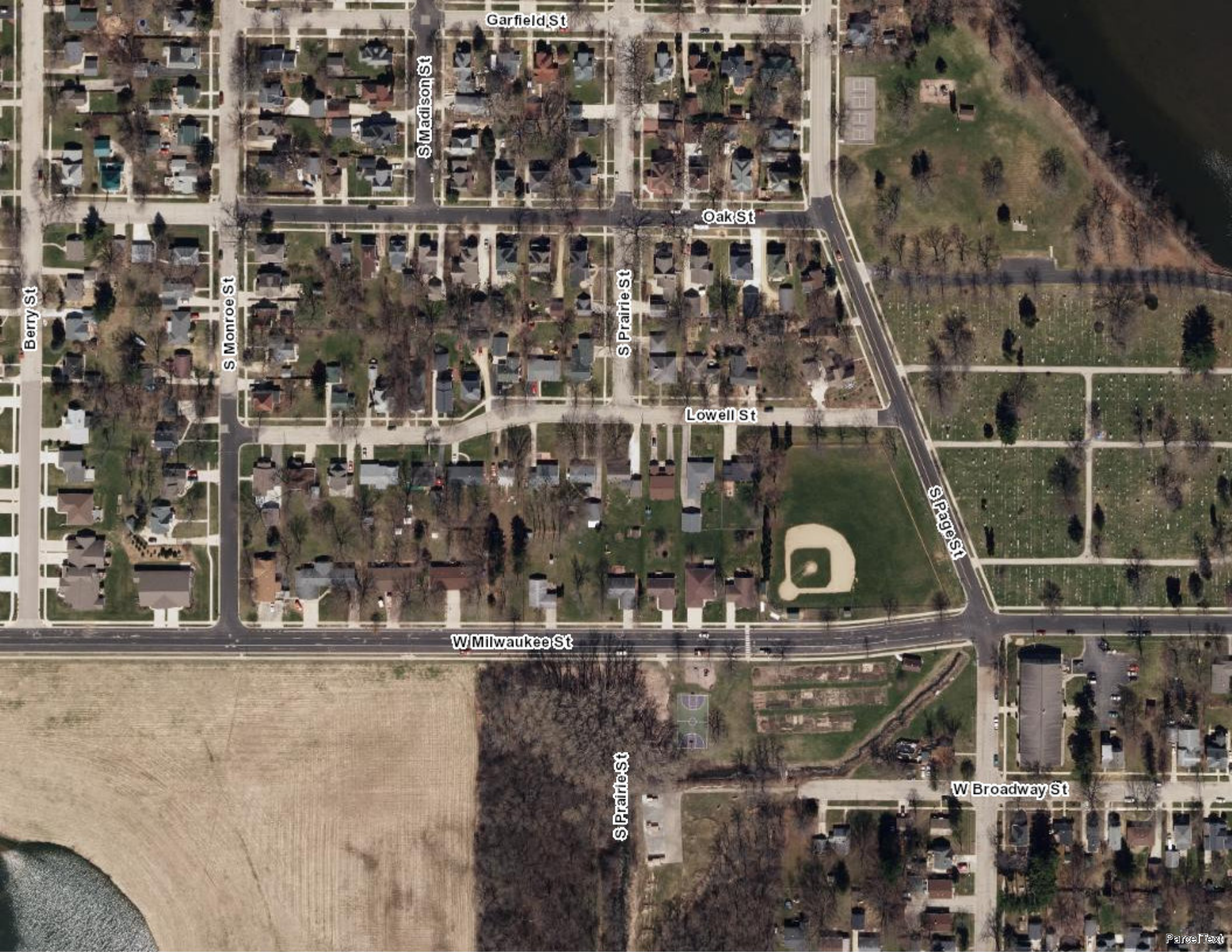
S Monroe St

Lowell St

W Milwaukee St

S Prairie St

S Prairie St



Berry St

S Monroe St

S Madison St

Garfield St

S Prairie St

Oak St

Lowell St

W Milwaukee St

S Page St

S Prairie St

W Broadway St

Google Maps 734 S Monroe St



Image capture: Jul 2018 © 2018 Google

Stoughton, Wisconsin

Google, Inc.

Street View - Jul 2018



Google Maps 425 Lowell St



Image capture: Aug 2011 © 2018 Google

Stoughton, Wisconsin

Google, Inc.

Street View - Aug 2011



Google Maps 341 Lowell St



Image capture: Aug 2011 © 2018 Google

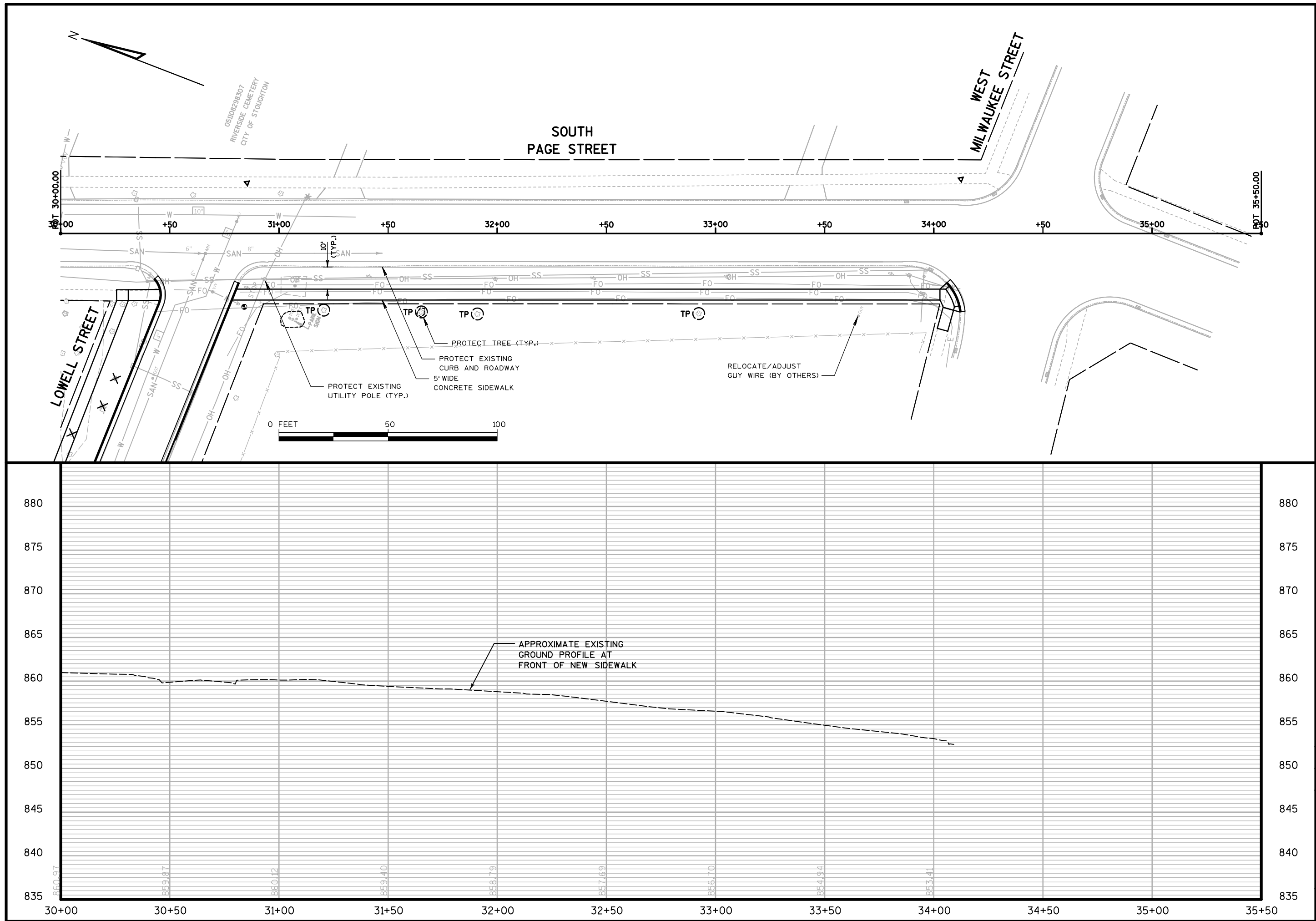
Stoughton, Wisconsin

Google, Inc.

Street View - Aug 2011



S. Page Street Sidewalk Materials

[illegible]

**SOUTH PAGE STREET
PLAN AND PROFILE**

2019 STREET AND UTILITY CONSTRUCTION

**CITY OF STOUGHTON
DANE COUNTY, WISCONSIN**

JOB NO.
1040.121

PROJECT MGR.
MAF



HEET

Monroe Street Sidewalk Materials

Google Maps 734 S Monroe St



Image capture: Jul 2018 © 2018 Google

Stoughton, Wisconsin

Google, Inc.

Street View - Jul 2018



Google Maps W Milwaukee St



Image capture: Jul 2018 © 2018 Google

Stoughton, Wisconsin

Google, Inc.

Street View - Jul 2018



Patterson Street Sidewalk Materials



Hamilton St

S Harrison St

Patterson St

W Main St

S Harrison St

S Monroe St

Google Maps 625 Patterson St



Image capture: Aug 2011 © 2018 Google

Stoughton, Wisconsin

Google, Inc.

Street View - Aug 2011



Google Maps 625 Patterson St



Image capture: Aug 2011 © 2018 Google

Stoughton, Wisconsin

Google, Inc.

Street View - Aug 2011



Grant Street Sidewalk Materials





Sherman St

W Taft St

E Taft St

E Wilson St

Grant St

W McKinley St

E McKinley St

E Prospect St

W Prospect St

N Division St

Parcel Text

Google Maps 100 W McKinley St

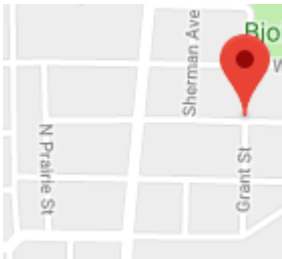


Image capture: Aug 2011 © 2018 Google

Stoughton, Wisconsin

Google, Inc.

Street View - Aug 2011



Google Maps 401 Grant St

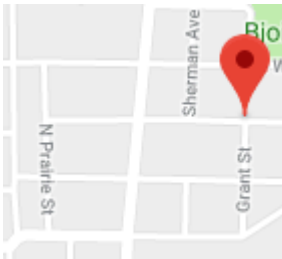


Image capture: Aug 2011 © 2018 Google

Stoughton, Wisconsin

Google, Inc.

Street View - Aug 2011



SIDEWALK INSTALLATION POLICY

I. PREAMBLE

This policy has been implemented to promote pedestrian safety in the City of Stoughton, primarily for children to and from school and to facilitate exercise walking.

II. POLICY STATEMENT

The long-term goal of the City of Stoughton is to install new sidewalks on both sides of every street, including cul de sacs. This policy attempts to prioritize the installation of new sidewalks consistent with the goals of the City.

III. ORDINANCE REGULATIONS

- A. Ord. 10-2(a)(6)(c) – Requires sidewalks to be installed on vacant lots at the time of development prior to occupancy of the building.
- B. Ord. 66-95 – Requires all new subdivisions to have new sidewalks installed on both sides of every street including new subdivisions.

IV. POLICY

- A. Both sides of all streets undergoing major reconstruction (i.e. curb and gutter).
- B. Small sections of local level streets that may be needed to connect existing sections of sidewalk where pedestrian safety needs to be improved or pedestrian volumes are significant.
- C. South and East sides of all **collector** traffic level streets within the City limits; or the opposite sides if they will connect existing logical sections of sidewalks.
- D. South and East sides of all **local** traffic level streets within the City limits; or the opposite sides if they will connect existing logical sections of sidewalks.
- E. North and West sides of all **collector** traffic level streets within the City limits; or the opposite sides if they will connect existing logical sections of sidewalks.
- F. North and West sides of all **local** traffic level streets within the City limits; or the opposite sides if they will connect existing logical sections of sidewalks.
- G. Repairs to existing sidewalks will continue consistent with our replacement program based on annual funding.

V. COLLECTOR STREETS

North-South collector streets (as defined in Master Plan) include: King Street, Lincoln Avenue, Van Buren Street, Kingslynn Road, Page Street, Division Street, Fourth Street, and Academy Street. East-West collector streets include: Kreideman Drive, Wilson Street, Milwaukee Street, Roby Road, Jackson Street, Forton Street, Jefferson Street, South Street, and Academy Street.

ADOPTED BY THE COMMON COUNCIL: October 13, 1997

S:\Clerks Office\Policies Procedures and Emergency Plans\SIDEWALK INSTALL.docx
S:\Clerks Office\Policies Procedures and Emergency Plans\SIDEWALK INSTALL.pdf
LASERFICHE:\Stoughton\Policies Procedures and Emergency Plans\Sidewalk Install