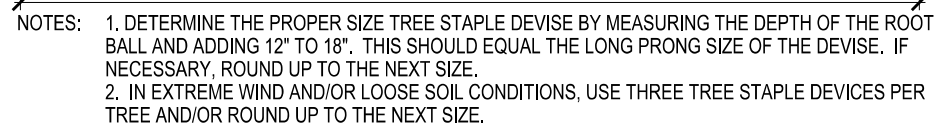


LANDSCAPE GENERAL NOTES

2. TRUE NORTH MAY VARY FROM PROJECT NORTH.
3. CONSTRUCTION PRACTICES, MEANS AND METHODS, AND JOB SITE SAFETY, SHALL REMAIN THE SOLE RESPONSIBILITY OF THE CONTRACTOR.
4. TO VERIFY ALL EXISTING AND PROPOSED UTILITIES, ELEVATIONS AND DIMENSIONS.
5. DIGGERS HOTLINE SHALL BE CALLED TO MARK UTILITIES PRIOR TO LAND DISTURBANCE.
6. RESTORE ALL AREAS TO SEEDS PLANTED AND UNNOTED OTHERWISE.
7. TO VERIFY ALL EXISTING AND PROPOSED UTILITIES, ELEVATIONS AND DIMENSIONS WITH BLACK ANODIZED ALUMINUM EROSION MAT.
8. ALL INDIVIDUAL TREES SHALL RECEIVE 4"X4" DIAMETER, 3" THICK SHREDDED BARK MULCH TREE RING WITH SPADE CUT EDGE. MULCH SHALL BE PULLED AWAY FROM TRUNKS OF 4" OR GREATER.
9. TO VERIFY ALL EXISTING AND PROPOSED UTILITIES, ELEVATIONS AND DIMENSIONS WITH BLACK ANODIZED ALUMINUM EROSION MAT OR PERSONAL UNLESS NOTED OTHERWISE.
10. VISIBLY URBAN TYPE B EROSION MAT SHALL BE PROVIDED ON SLOPES 4:1 OR GREATER.
11. TO VERIFY ALL EXISTING AND PROPOSED UTILITIES, ELEVATIONS AND DIMENSIONS WITH BLACK ANODIZED ALUMINUM EROSION MAT.
12. TO VERIFY ALL EXISTING AND PROPOSED UTILITIES, ELEVATIONS AND DIMENSIONS WITH BLACK ANODIZED ALUMINUM EROSION MAT. SHALL BE INSTALLED WITH OVERLAPPED JOINTS AND STAKED WITH HARDWOOD STAKES MIN. 6" LONG PRIOR TO INSTALLATION OF PLANTS TO PREVENT COMPACTION.
13. QUANTITY OF MATERIALS TO BE ORDERED SHALL BE BASED ON MATERIAL OMISSIONS OCCUR IN THE PLANT MATERIALS LIST. THE PLANTING PLANS SHALL COVER.
14. SEE DETAIL 04.11 FOR THREE PLANTING DETAIL.
15. TO VERIFY ALL EXISTING AND PROPOSED UTILITIES, ELEVATIONS AND DIMENSIONS WITH BLACK ANODIZED ALUMINUM EROSION MAT.
16. FLAWS MAY BE REMOVED ONCE MOVING AROUND NEW PLANT SEEDING AREAS ARE DEFINED.
17. REFER TO EROSION CONTROL PLAN FOR ADDITIONAL INFORMATION. LANDSCAPE CONTRACTOR SHALL BE RESPONSIBLE FOR MAINTAINING WITH EARTHWORK.
18. TO VERIFY ALL EXISTING AND PROPOSED UTILITIES, ELEVATIONS AND DIMENSIONS WITH BLACK ANODIZED ALUMINUM EROSION MAT.
19. NATIVE SEED ZONES REQUIRE A MINIMUM ONE-YEAR CONTRACTOR MAINTENANCE PERIOD. CONTRACTOR SHALL MAINTAIN NATIVE PLANTS AND SEEDS THROUGHOUT MAINTENANCE PERIOD. CONTRACTOR SHALL MAINTAIN NATIVE PLANT ESTABLISHMENT. SEE SPECIFICATIONS FOR ADDITIONAL INFORMATION.

NOTE: ALL SYMBOLS MAY NOT BE USED IN THIS SET.



## LANDSCAPE REQUIREMENTS

Provide 40 points for every 100' of street frontage, plant on site within 10'-0" of property lines that adjoin street. 50% shall be climax/tall trees and 30% medium trees.

Provided Landscaping

**Involved Areas:**

Provide 60 landscape points per 20 stalls or 10,000 sf of paved area. At least 30% of points shall be climax or tall trees, and a minimum of 40% of points shall be shrubs. Plant within 10' of paved area.

Provided Landscaping

### Building Foundation:

Provide 40 landscape points per 100 lf of building foundation

Provided Landscaping

Note: Perennials not included in calculations. Alternate location along drive for 6 of Medium Dec. Trees.

Provide 15 landscape points per 1,000 sf of building footprint

Provided Landscaping

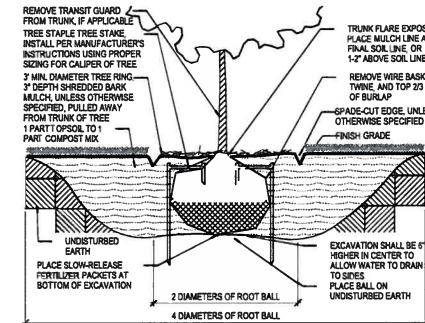
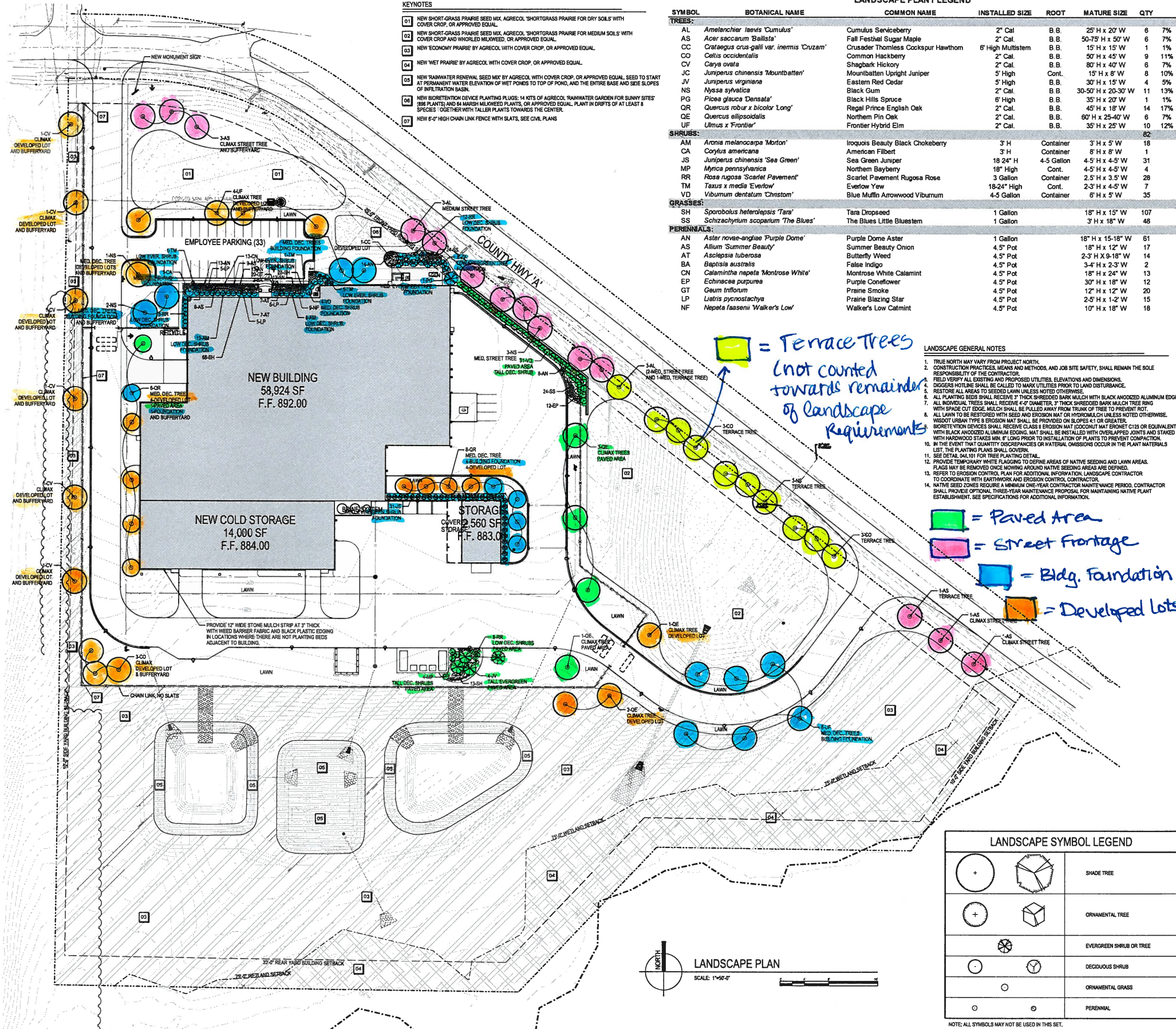
## DIFFERYARD REQUI

Provide an opacity level of 0.6 between Institutional property and Heavy Industrial Property along length of Development.

### Using 20'+ Buffer Width

ADY NO5





NOTES: 1. DETERMINE THE PROPER TREE STAPLE DEVICE BY MEASURING THE DEPTH OF THE ROOT BALL AND ADDING 12" TO IT. THIS SHOULD EQUAL THE LONG PRONG SIZE OF THE DEVICE. IF NECESSARY, ROUND UP TO THE NEXT SIZE.  
2. IN EXTREME WINDY AND/OR LOOSE SOIL CONDITIONS, USE THREE TREE STAPLE DEVICES PER TREE AND ROUND UP TO THE NEXT SIZE.

**04 B.B. SHRUB AND TREE PLANTING DETAIL**  
SCALE: NONE

### LANDSCAPE REQUIREMENTS

**Street Frontages:**  
Provide 40 points for every 100' of street frontage. plant on site within 10'-0" of property lines that adjoin street. 50% shall be climax/tall trees and 50% medium trees.

Street	Frontage	Calculation	Points Required
County Hwy A	1186 lf	40 pts. / 100 LF	474.4
		Subtotal	474

Plant	Point Value	Quantity	Provided Landscape Points
Climax Deciduous Tree, 2" Cal	75 ea	5	375
Medium Deciduous Tree, 6" Cal	15 ea	8	120
		Subtotal	495

**Paved Areas:**  
Provide 60 landscape points per 20 stalls or 10,000 sf of paved area. At least 30% of points shall be climax or tall trees, and a minimum of 40% of points shall be shrubs. Plant within 10' of paved area.

Area	Calculation	Required Landscape Points
Paved Surface Area	95,969 sf / 10,000 sf	576

Plant	Point Value	Quantity	Provided Landscape Points
Climax Deciduous Tree, 2" Cal	75 ea	4	300
Medium Deciduous Tree, 6" Cal	15 ea	1	15
Medium Evergreen Tree, 4" Tall	20 ea	4	80
Tall Deciduous Shrub	5 ea	35	175
Low Deciduous Shrub	1 ea	8	8
		Subtotal	578

**Building Foundation:**  
Provide 40 landscape points per 100 lf of building foundation.

Perimeter	Calculation	Required Landscape Points
Building Foundation Perimeter	1,425 lf / 100 LF	570

Plant	Point Value	Quantity	Provided Landscape Points
Medium Deciduous Tree, 6" Cal	15 ea	15	225
Medium Evergreen Tree, 4" Tall	20 ea	1	20
Low Evergreen Tree, 3" Tall	12 ea	8	96
Medium Evergreen Shrub, 18" Tall	5 ea	31	155
Medium Deciduous Shrub	3 ea	5	15
Low Evergreen Shrub, 12" Tall	3 ea	7	21
Low Deciduous Shrub, 18" Tall	1 ea	38	38
		Subtotal	570

Note: Perennials not included in calculations. Alternate location along drive for 6 of Medium Dec. Trees.

**Developed Lots:**  
Provide 15 landscape points per 1,000 sf of building footprint.

Area	Calculation	Required Landscape Points
Building Footprint	89,484 sf / 1,000 sf	1342

Plant	Point Value	Quantity	Provided Landscape Points
Climax Deciduous Tree, 2" Cal	75 ea	16	1200
Medium Deciduous Tree, 6" Cal	15 ea	9	135
Small Deciduous Tree, 4" Tall	10 ea	1	10
		Subtotal	1345

### BUFFERYARD REQUIREMENTS

Provide an opacity level of 0.6 between Institutional property and Heavy Industrial Property along length of Development.

Length of Development	Calculation	Required Landscape Points
Length of Development from North 25' Bldg. Setback and South edge of Fence	595 lf / 100 LF	1315

Using 20' Buffer Width and a 6' High Chain Link fence with slats, provide 221 landscape points per 100 LF.

Plant	Point Value	Quantity	Provided Landscape Points
Climax Deciduous Tree, 2" Cal	75 ea	16	1200
Medium Deciduous Tree, 6" Cal	15 ea	9	135
		Subtotal	1335