



OFFICIAL NOTICE AND AGENDA

Notice is hereby given that the River and Trails Task Force Committee of the City of Stoughton, Wisconsin will hold a regular or special meeting as indicated on the date, time and location given below.

Meeting of the:

Date /Time:

Location:

Members:

RIVER AND TRAILS TASK FORCE COMMITTEE OF THE CITY OF STOUGHTON

Monday, November 6, 2017 @ 5:30 PM

Ed Overland Room (381 E Main St, Stoughton WI 53589)

Jon Lewis, Jim Wilcox, Sandra Black, Nancy Hagen, Bob Diebel, Joni Dean, Larry Liebmman, Ralph Erickson, Phil Caravello, David Sharpe, Councilperson Matt Bartlett, Parks and Recreation Director Tom Lynch

CC:

Attorney Matt Dregne, Donna Olson, Leadership Team, Stoughton Newspapers, Sarah Monette, Judi Krebs, Council Members.
oregonobserver@wcinet.com. derickson@madison.com

* Note-For security reasons, the front doors of the City Hall building (including the elevator door) will be locked after 4:30 p.m. If you need to enter City Hall after that time, please use the entrance on the east side of City Hall (the planning department door). If you are physically challenged and are in need of the elevator or other assistance, please call 873-6677 prior to 4:30 p.m.

Item #	CALL TO ORDER
1	Call to Order
2	October 2, 2017 Minutes
3	Communications
	Mandt Park Plan Update-Tom
	Amundson Trail-Tom
	Virgin Lake Trail Update

Item #	OLD BUSINESS
4	Bike Route Signs

Item #	NEW BUSINESS
5	Dane County Trail Information Boards
6	Future Agenda Items

ADJOURNMENT

Trails and River Task Force Minutes -
Oct. 2, 2017
Ed Overland Room

Present: Phil Caravello, Tom Lynch, Jim Wilcox, Bob Diebel, Matt Bartlett, Nancy Hagen, Sandra Black

1. Mandt Park: feasibility study went well for building. Road in park routed for one way heading east. Added a skating trail and fish bypass in river. Pickle ball courts coming next spring.
2. Trail behind hospital still in discussions. Prices for a hard surface on the Amundson Park trail extension along the river to come at later date.
3. Lynch shared maps on north connector through Virgin Lake Park trail system.
4. Bob reports on Dane county parks get together explaining the lower Yahara River trail system meeting was a success.
5. Plantings at Division St. Park seem to be helping with geese problem.
6. Midtbo Property update: Bob reviews no news yet on easements east of Midtbo's property.
7. County garage on NW corner of N and B used by maintenance crews. Fence still up. Once fence is gone trails can start to be developed north of B.
8. Bike route signs: Lynch shared map of possible locations of signs that have been purchased. Will add installation of signs to spring cleanup projects.
9. Motion by Hagen seconded by Black to adjourn at 7:40. Carried.

Respectfully submitted,
Nancy Hagen

Hello Lower Yahara River Trail Partners,

Last year we had a donor provide us with resources to create information boards (4'x 4' map and treated posts) for the Lower Yahara River Trail to help inform the public of the pending trail connections. The idea is that the information boards would be installed at parks and public spaces along the proposed trail corridor. Please see attached Lower Yahara River Trail Map.

We did adjust the proposed trail slightly to show the trail corridor only on public lands and roadways. There are still proposed lands that we are working on that are currently under private ownership. These private lands would provide for an alternate route around sensitive cultural sites and wetlands. The lands are east of McFarland and lower Mud Lake, and an off-road route parallel to the ATC Utility Corridor and the Rail Line that run north south along William Drive in the Town of Pleasant Springs. It our goal when completed to have the entire trail off road.

The next phase of the LYRT to be planned and constructed is the connection between Fish Camp County Park to Lake Kegonsa State Park across the Door Creek Wetlands. This will immediately open access between McFarland and Stoughton along with Lake Kegonsa State Park.

Request:

- 1) Please provide input on proposed map 4'x4' any suggested changes you like to suggest**
- 2) Identify your sites where you'd like a kiosk by marking your map with a star indication the approximate location where you'd like to install the Information Board. The star indicates a "you are here" location within the proposed trail corridor.**
- 3) We are asking everyone if they can get back to us with your sign request by December 1, 2017.**
- 4) We'll create the individual signs that you request with your star locations. This will include the metal signs and the 4"x4" x 10' treated posts for the installation.**

County will install signs will be located at:

- Lower Mud Lake Natural Resource Area
- Fish Camp Park (show on sample Map)
- LaFollette County Park
- Viking County Park

Please let me know if you have any questions.

Darren
224-3766



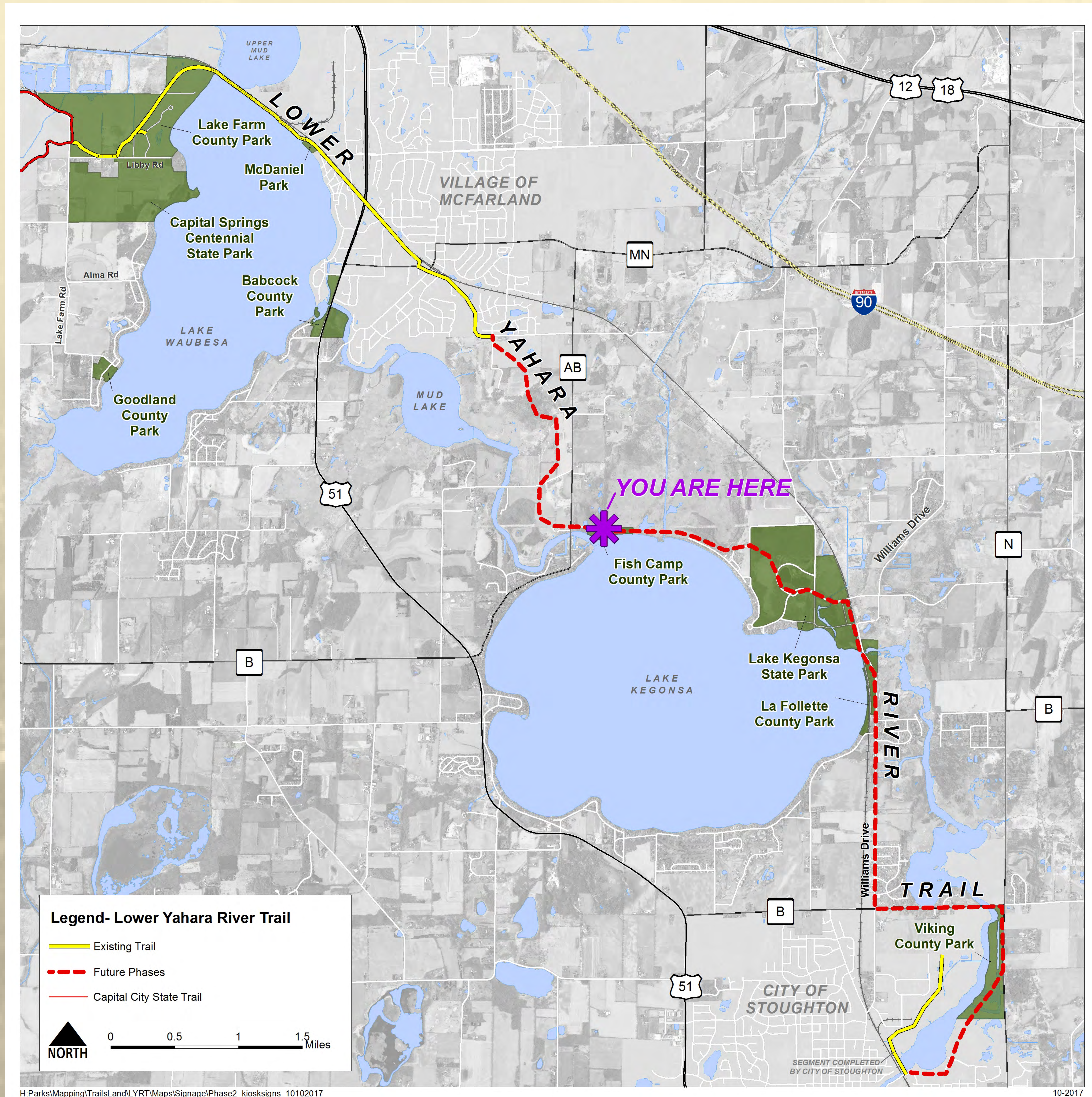
FUTURE LOWER YAHARA RIVER TRAIL

Lake Farm County Park to City of Stoughton

The Dane County Lower Yahara River Trail is a multi-use regional trail that connects the communities of McFarland and Stoughton to the Capital City Trail and the City of Madison. This park will one day be a stop along the future Lower Yahara River Trail.

Learn more at
www.danecountyparks.com!

What will the trail look like?
Phase 1 Photos



This map made possible through a generous donation.

10-2017